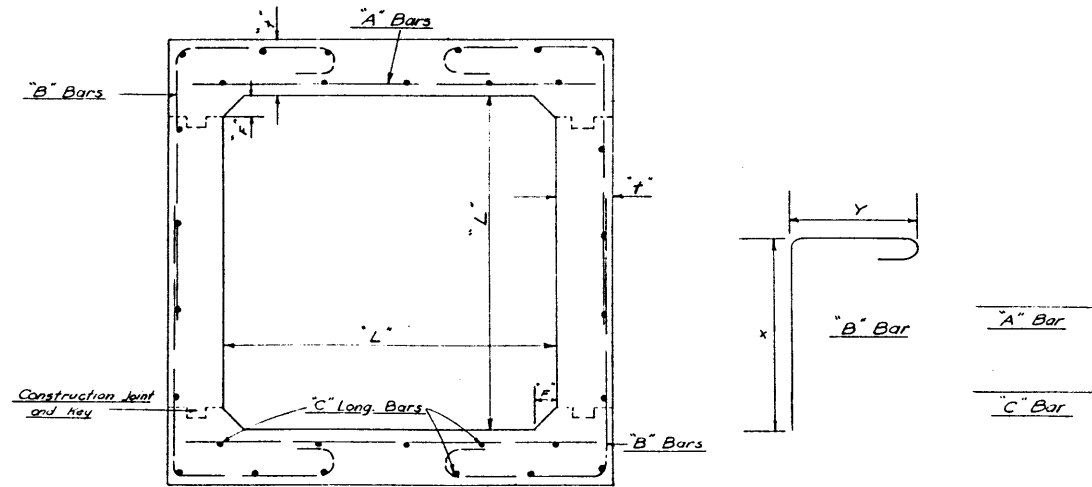
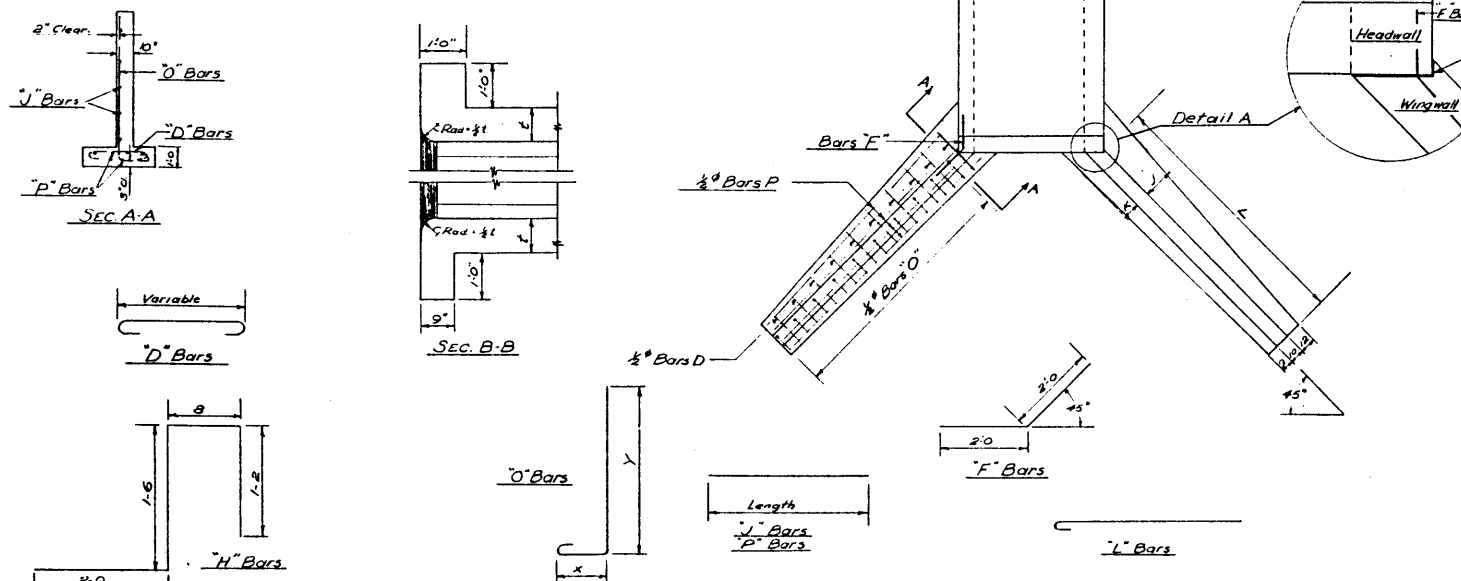


- GENERAL NOTES**
1. Min. steel cover to be 1 1/2 inches
 2. All concrete to be class "A" 3000 psi at 28 days.
 3. Max. size coarse aggregate to be 2 inches
 4. Grade and line to be set in field by resident Engineer



SECTION THRU' BARREL



NOTE: Map with hot asphalt and apply layer of paper before pouring wingwall

MAX. COVER-FT.	SIZE (L x L) Ft.	WALL THICK. (H) in.	REINFORCING STEEL												F' INS.	WT. OF STEEL PER FT. OF CULVERT-LS.	AMT. OF CONC. PER FT. OF CULVERT-CU.
			A' BARS			B' BARS			C' BARS			D' BARS					
			SIZE	SPACING	LENGTH	SIZE	SPACING	X	Y	LENGTH	SIZE	SPACING	LENGTH				
0	4x4	10	3/8"	8 in.	51'-4 in.	5/8"	5 in.	3'-8 in.	2'-0 in.	6'-2 in.	5/8"	10 1/2 in.	20'-10 in.	5 nos.	80.8	0.57	
	5x5	10	3/8"	10	6'-4	3/4"	6	4'-2	2'-4	7'-1	5/8"	9 1/2		5	116.7	0.72	
	6x6	10	3/8"	9	7'-4	3/4"	5 1/2	4'-8	2'-8	7'-11	5/8"	9		5	145.8	0.84	
	7x7	10	3/8"	7 1/2	8'-4	3/4"	5 1/2	5'-2	3'-0	8'-9	5/8"	8		5	173.4	0.97	
	8x8	10	3/8"	7	9'-4	3/4"	5	5'-8	3'-4	9'-7	5/8"	7		5	212.5	1.09	
5	9x9	10	3/8"	6	10'-4	3/4"	4 1/2	6'-2	3'-8	10'-7	5/8"	10		5	261.5	1.21	
	4x4	9	3/8"	13	5'-2	3/4"	7	3'-7	1'-11	6'-0	5/8"	12		5	60.4	0.53	
	5x5	9	3/8"	8	6'-2	3/4"	6	4'-1	2'-3	6'-10	5/8"	12		5	83.0	0.64	
	6x6	9	3/8"	6	7'-2	3/4"	5	4'-7	2'-7	7'-8	5/8"	12		5	110.1	0.75	
	7x7	11	3/8"	6	8'-6	3/4"	5 1/2	5'-3	3'-1	8'-10	5/8"	11		6	126.9	1.08	
10	8x8	11	3/8"	7	9'-6	3/4"	6 1/2	5'-9	3'-5	9'-9	5/8"	9		6	180.3	1.22	
	9x9	11	3/8"	5 1/2	10'-6	3/4"	6	6'-3	3'-9	10'-7	5/8"	12		6	227.0	1.35	
	4x4	9	3/8"	12	5'-2	3/4"	6	3'-7	1'-11	6'-0	5/8"	12		5	65.3	0.53	
	5x5	9	3/8"	7 1/2	6'-2	3/4"	5	4'-1	2'-3	6'-10	5/8"	12		5	91.7	0.64	
	6x6	9	3/8"	8	7'-2	3/4"	5 1/2	4'-7	2'-7	7'-9	5/8"	12		5	136.1	0.75	
15	7x7	11	3/8"	7 1/2	8'-6	3/4"	5 1/2	5'-3	3'-1	8'-11	5/8"	10		6	167.1	1.08	
	8x8	12	3/8"	6 1/2	9'-8	3/4"	5 1/2	5'-10	3'-6	9'-11	5/8"	8		6	207.5	1.33	
	9x9	12	3/8"	5 1/2	10'-8	3/4"	5	6'-4	3'-10	10'-9	5/8"	12		6	248.3	1.48	
	4x4	9	3/8"	9	5'-2	3/4"	6	3'-7	1'-11	6'-1	5/8"	12		5	89.7	0.53	
	5x5	9	3/8"	6 1/2	6'-2	3/4"	5 1/2	4'-1	2'-3	6'-11	5/8"	12		5	119.3	0.64	
20	6x6	10	3/8"	7 1/2	7'-4	3/4"	5	4'-8	2'-8	7'-11	5/8"	10		6	153.4	0.84	
	7x7	12	3/8"	6 1/2	8'-8	3/4"	5	5'-4	3'-2	9'-1	5/8"	8		6	194.8	1.19	
	8x8	12	3/8"	5 1/2	9'-8	3/4"	5	5'-10	3'-6	9'-11	5/8"	8		6	224.5	1.45	
	9x9	14	3/8"	7	11'-0	3/4"	4 1/2	6'-6	4'-0	11'-1	5/8"	10		6	286.5	1.76	
	4x4	9 1/2	3/8"	10	5'-3	3/4"	5	3'-7	1'-11	6'-2	5/8"	12		5	105.6	0.56	

-WINGWALL DETAILS-

SIZE	J	K	L	"D" BARS			"P" BARS			"J" BARS			"F" BARS			"H" BARS			"L" BARS			"O" BARS			Height	MATERIALS - 4 WINGS			
L x L	H	H	H	No.	Size	Spacg.	Lgth.	No.	Size	Spacg.	Lgth.	No.	Size	Spacg.	Lgth.	No.	Size	Spacg.	Lgth.	No.	Size	Spacg.	Lgth.	H	ft.	ins.	Conc. cu.	Steel lbs.	
4x4	1-7	1-2	7-6	16	3/8"	12	3-11	24	3/8"	Var.	10-4	16	3/8"	12	10-2	24	3/8"	12	4-0	16									
5x5	1-10	1-4	10-6	16	3/8"	12	4-3	24	3/8"	Var.	10-4	16	3/8"	12	10-2	24	3/8"	12	4-0	16									
6x6	2-0	1-6	13-6	24	3/8"	12	4-3	24	3/8"	Var.	10-4	16	3/8"	12	10-2	24	3/8"	12	4-0	16									
7x7	2-3	1-8	17-0	24	3/8"	12	4-3	24	3/8"	Var.	10-4	16	3/8"	12	10-2	24	3/8"	12	4-0	16									
8x8	2-7	1-10	20-6	28	3/8"	12	4-6	28	3/8"	Var.	10-4	16	3/8"	12	10-2	24	3/8"	12	4-0	16									
9x9	2-9	2-0	23-6	32	3/8"	12	4-6	32	3/8"	Var.	10-4	16	3/8"	12	10-2	24	3/8"	12	4-0	16									

NOTE: Fillet quantities not included in computed concrete quantities

APPROVED BY _____ Chief Bridge Engineer

STANDARD PLAN
- SINGLE OPENING
REINFORCED CONCRETE BOX CULVERT -

GOVERNMENT OF THE PROVINCE OF ALBERTA
DEPARTMENT OF PUBLIC WORKS
BRIDGE BRANCH, EDMONTON

FILE NO. _____ HWY. NO. _____ DWG. NO. S-527
LOCATION _____ SCALE _____ SHEET 1 OF 1
STREAM _____

NO.	DATE	DESCRIPTION	BY

DESIGNED BY: N.J.G.
CHECKED BY: N.J.G.
DATE: OCT. 5 1951
DATE: OCT. 10 1951

ALBERTA RECORDS CENTER