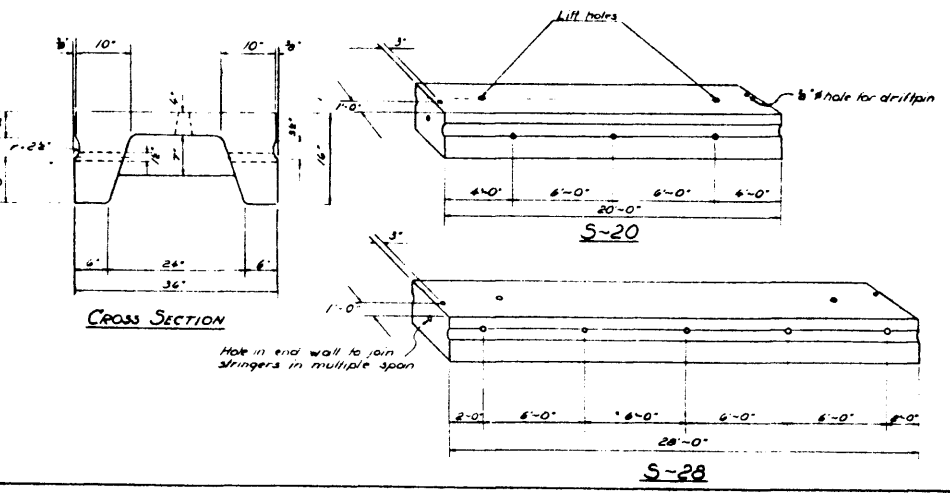
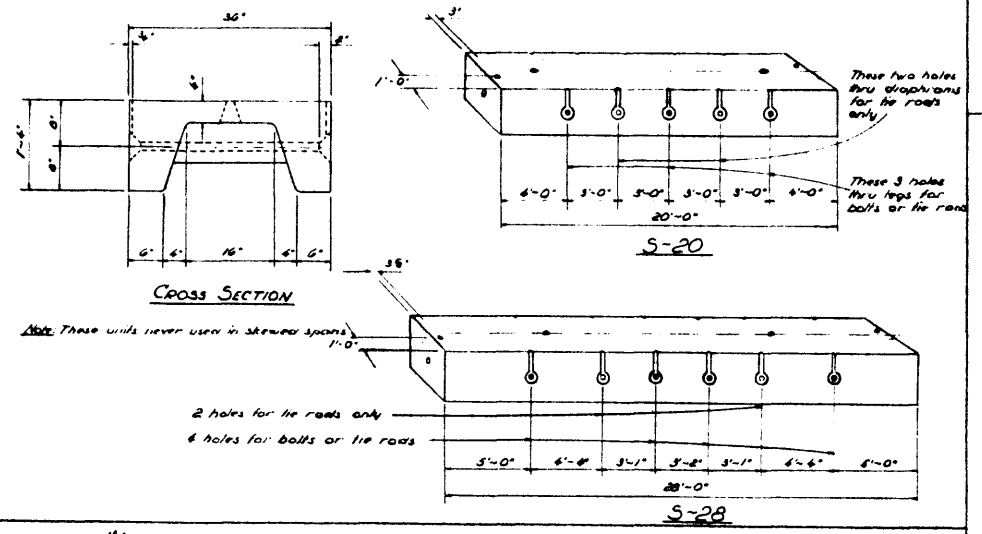


STRINGERS

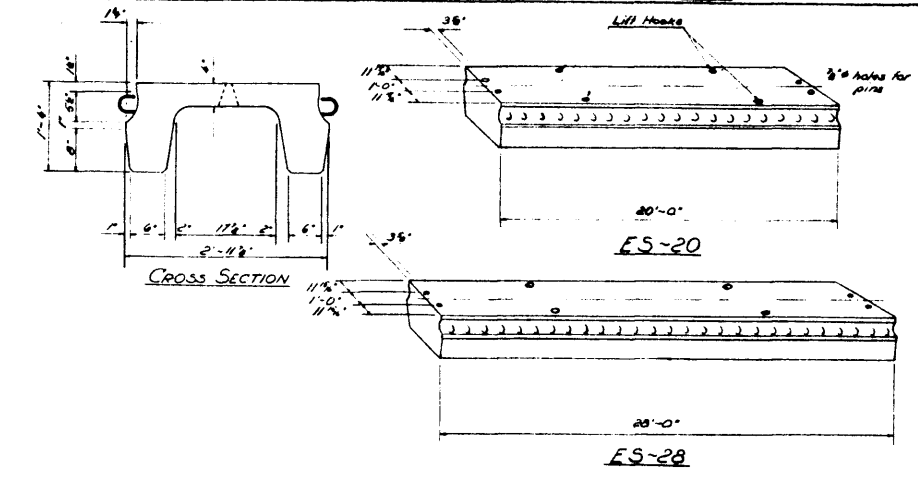
OLD TYPE 'A' STRINGER



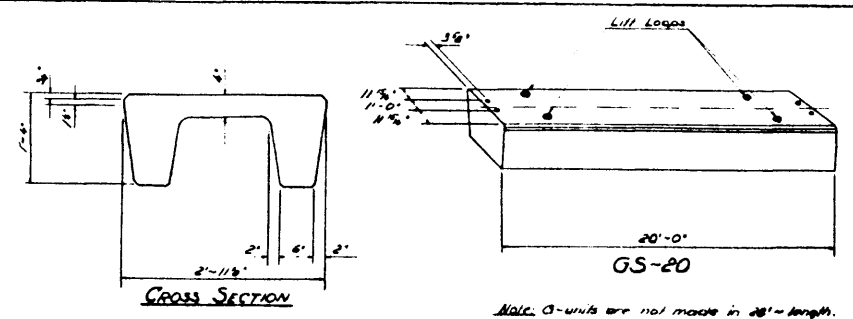
NEW TYPE 'A' STRINGER



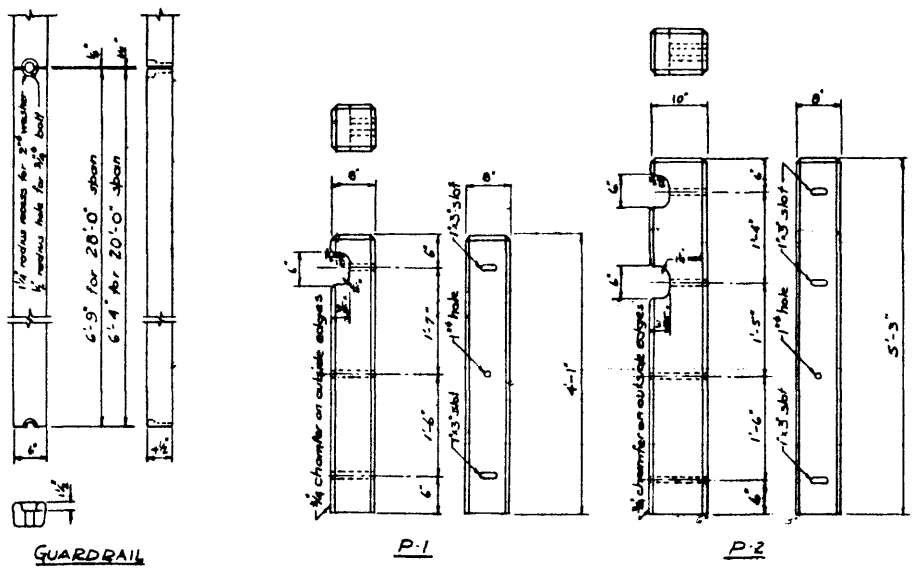
TYPE 'E' STRINGER



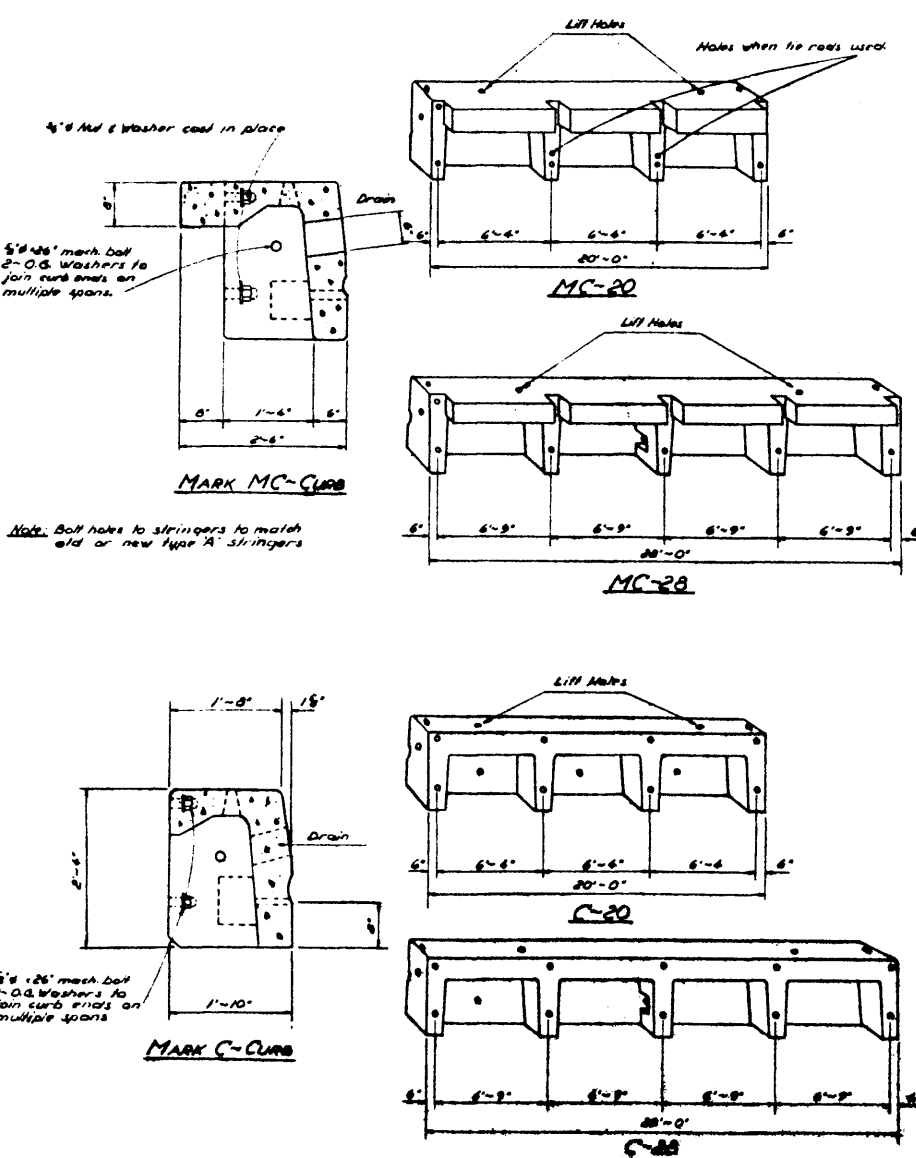
TYPE 'G' STRINGER



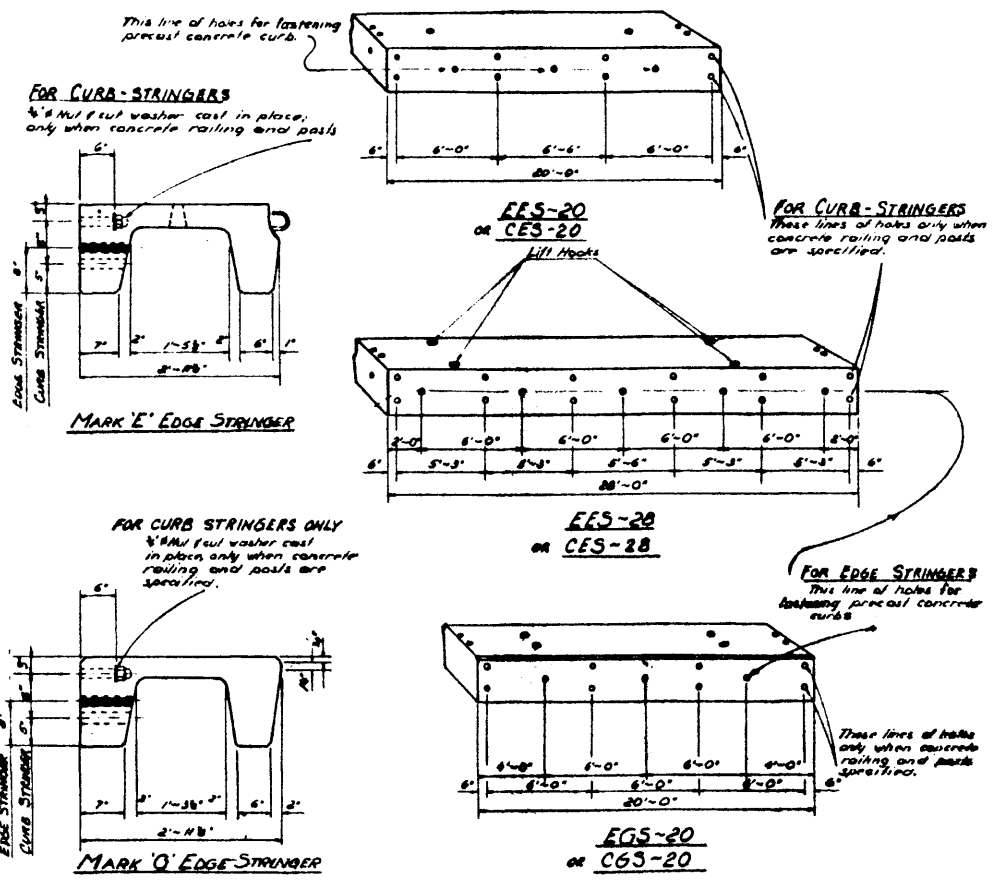
PRECAST GUARDRAIL AND POSTS



CURBS



EDGE STRINGERS AND CURB STRINGERS



Unit Mark	Name	Weight each Unit	Design Load each Unit	Design Load (ft. spacing)	Period of Use
S-20	Old Type 'A' Stringer	7,700 lbs	N-12	N-15	These units used exclusively in 1980 and sparingly at 1982. Then for short spans only later 1982 and 1983.
S-28	do	10,800	N-12	N-15	
S-20	New Type 'A' Stringer	7,700	N-15	N-20	This type replaced old Type 'A' about June 1982 and almost exclusively after. One short span still used for street spans 1982.
S-28	do	10,900	N-15	N-20	
ES-20	Type 'E' Stringer	6,740		N-20	This type used on some roadways... locations 1982
ES-28	do	9,600		N-20	
GS-20	Type 'G' Stringer	7,780	N-20		replaced Type 'A' for 20' spans; Aug. 1982
CS-20	Curb Stringer (Type 'A')	7,700	Same as Stringers		
CS-28	do (Type 'A')	10,800	do		
CES-20	do (Type 'E')	7,240		N-20	Same as for corresponding Stringers
CES-28	do (Type 'E')	9,960		N-20	
CES-20	do (Type 'G')	10,530	N-20		
C-20	Curb	6,780			Same as for Stringers used with all types balling detail corresponding to specific Stringer Types.
C-28	do	9,500			
MC-20	Modified Curb	8,600			Used in lieu of C-20 and C-28 Curbs when steel hardware used.
MC-28	do	11,200			
EES-20	Edge Stringer (Type 'E')	7,020		N-20	
EES-28	do	9,960		N-20	Same as for corresponding Stringers
EES-20	do (Type 'G')	7,720	N-20		

DESIGNED BY: _____ DATE: _____
 CHECKED BY: _____ DATE: _____

STANDARD PRECAST CONCRETE UNITS
 SUMMARY OF DETAILS
 UP TO DEC 31, 1982

GOVERNMENT OF THE PROVINCE OF ALBERTA
 DEPARTMENT OF HIGHWAYS
 BRIDGE BRANCH, EDMONTON

FILE NO. _____ HWY. NO. _____ DWG. NO. **S-534**
 LOCATION _____ SCALE _____ SHEET _____ OF _____

NO.	DATE	DESCRIPTION	BY
1	OCT. 24/81	Weights Added	D.S.L.
2	June 18	Design Member W.L. 125 Corrected	E.L.S.
3	March 23/82	Unit Mark S-20, S-28, ES-20, ES-28, GS-20	B.L.P.