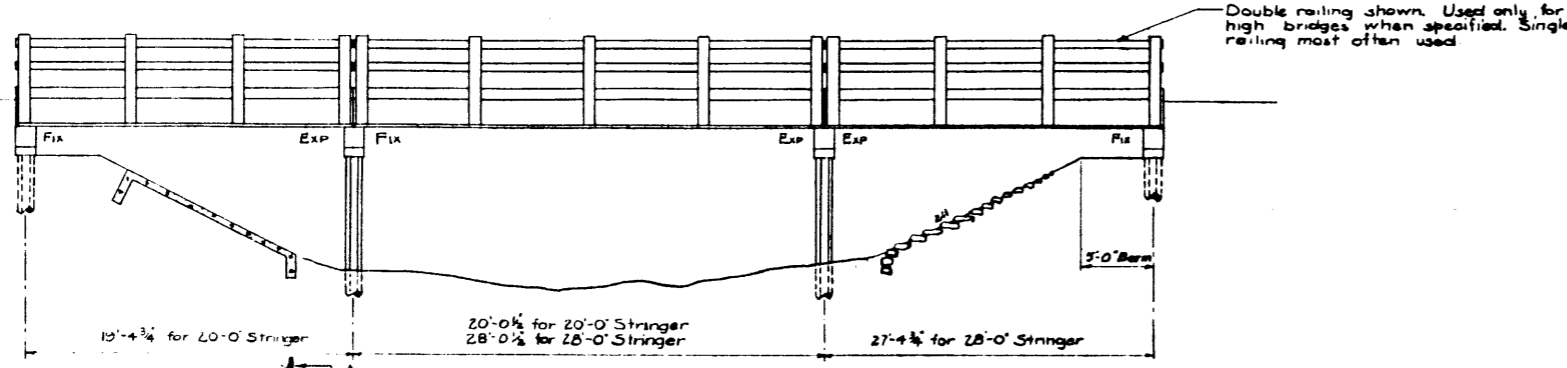
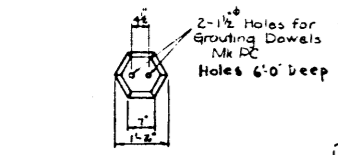


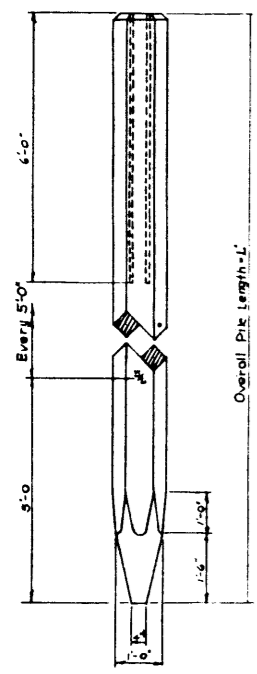
MEMBER	MARK	WEIGHT
20' Stringer Unit	S-20	7,700 lb
25' "	S-25	10,800
20' Curb Unit	MC-20	8,600
25' "	MC-25	11,200
Caps per ft.		305
Piles per ft.		135



ELEVATION OF TYPICAL BRIDGE SHOWING SPILL-THROUGH TYPE ABUTMENTS AND CONCRETE SLOPE PROTECTION WALL OR RIPRAP WHERE SPECIFIED  
Scale: 3/4"=1'-0"



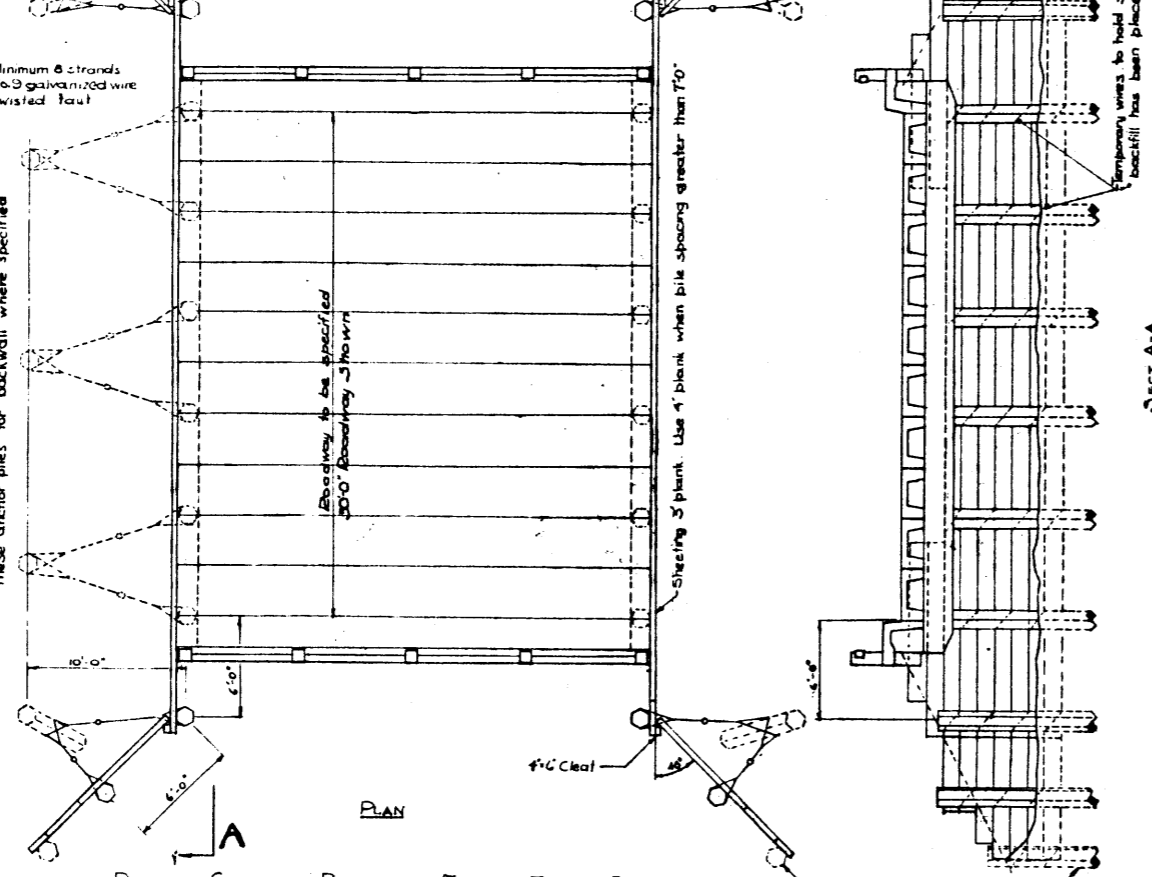
2-1/2" Holes for Grouting Dowels Mk PC Holes 6'-0" Deep



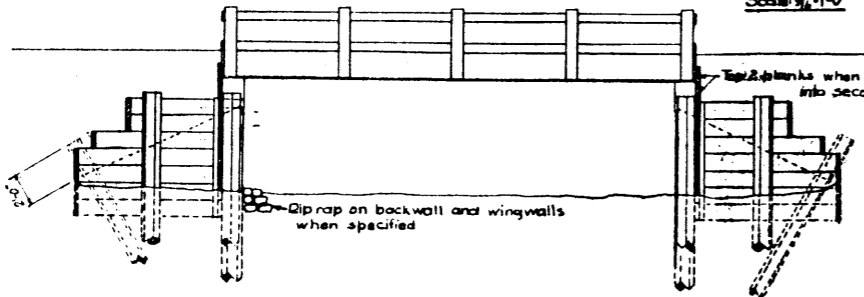
PRECAST PILE Scale: 1/2"=1'-0"

All Anchor Piles May be Treated Timber or Precast Stone Minimum length all anchor piles 6'-0" These anchor piles for backwall where specified

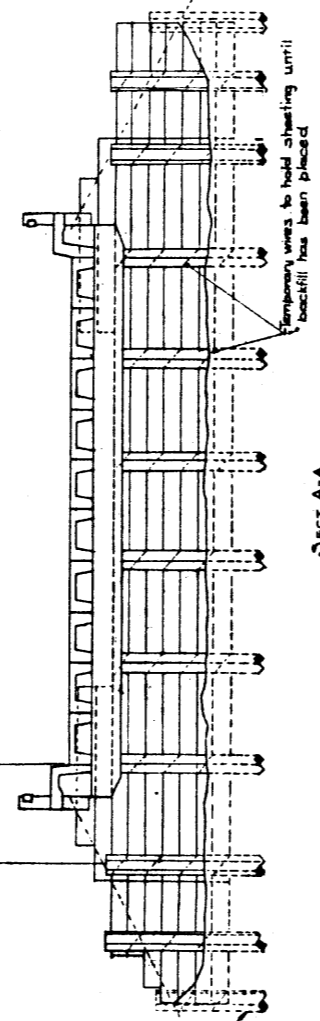
Minimum 6 strands No. 9 galvanized wire twisted fault



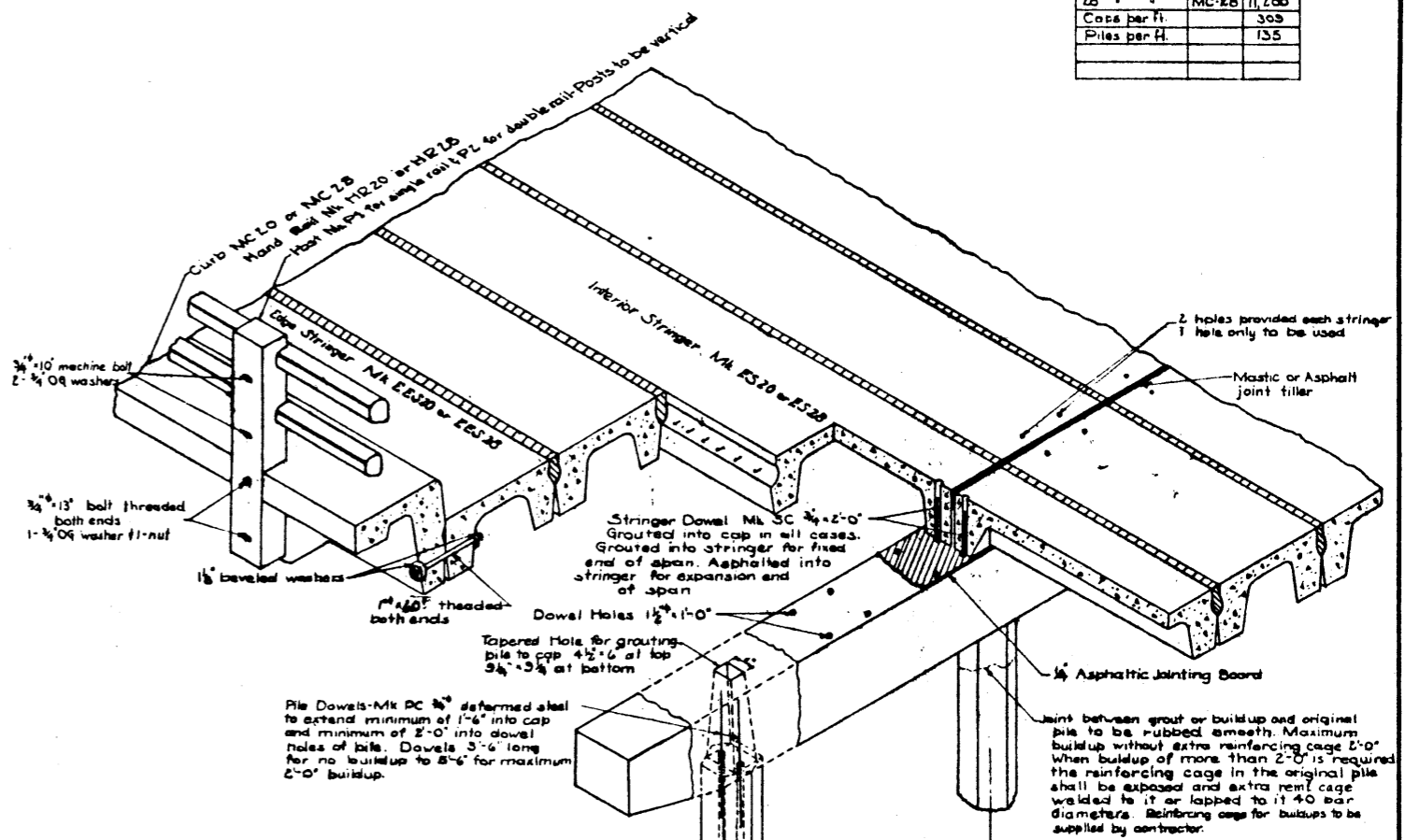
PRECAST CONCRETE BRIDGE WITH TREATED TIMBER BACKWALLS Scale: 3/4"=1'-0"



ELEVATION



SECT. A-A



ASSEMBLY DRAWING OF STANDARD PRECAST BRIDGE Scale: 1/2"=1'-0"

GENERAL NOTES

1. GROUT shall be mixed 1 part cement to 2 parts clean sand. Aggregate in grout for piles and pile buildups may be maximum 3/4" size and well graded. All grout to be 5000 psi at 28 days.
2. SIZES and SKEWS of BRIDGES: Number and lengths of spans for each particular bridge to be specified. Skewed bridges are similar to bridges shown.
3. ALL PILES shall be driven to refusal with adequate hammer with maximum drop of 8 ft. Exact number and length and pile spacing to be specified for each bridge.
4. WHERE CONCRETE COMES IN CONTACT WITH ALKALINE SOIL it shall be given one coat of bituminous paint.
5. DOWEL HOLES to be kept free from dirt and ice.

SEE DWG. S-534 FOR DETAILS OF DECK UNITS

NOTE: MARKING OF PILES  
Prior to driving, pile to be marked at 5'-0" intervals from point of pile as 5'-0", 10'-0", etc. where first mark refers to the distance of the mark from the point of the pile and the second to the original length of the pile.  
Numbers to be plainly marked with red lead paint if marks not cast in pile.

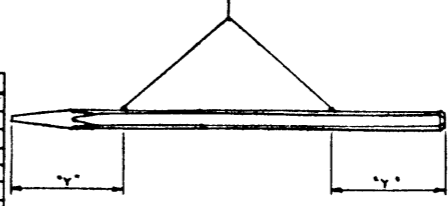
PILE PICK-UPS

Pile Length	Weight	"X"	"Y"
25 ft.		7'-4"	3'-0"
20		5'-10"	4'-0"

CAP HANDLING

Cap Length	Weight	"Z"
18'-6"		3'-10"
22'-7"		4'-8"

PILE HANDLING



DETAILS FOR ERECTION OF STANDARD PRECAST BRIDGES

GOVERNMENT OF THE PROVINCE OF ALBERTA  
DEPARTMENT OF HIGHWAYS  
BRIDGE BRANCH, EDMONTON

FILE NO. \_\_\_\_\_ HWY. NO. \_\_\_\_\_ DWG. NO. S-535  
LOCATION \_\_\_\_\_ SCALE 3/8"=1'-0"  
STREAM \_\_\_\_\_ SHEET 1 OF 2

NO.	DATE	DESCRIPTION	BY

DESIGNED BY: \_\_\_\_\_ DATE: APR. 3 1953  
 CHECKED BY: F.V.S. DATE: APR. 1 1953