

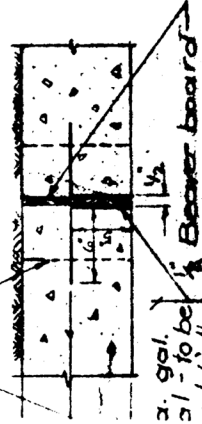
CULVERT FILE NO. 74121

BARRELL REINFORCING SCHEDULE

Mark	Size	Length	No. of Spacing	Shape	Placing	Weight
A	5/8"	7'-8"	260	Straight	Trans-Top of Bottom Slab	—
B	5/8"	6'-9"	260	Straight	Trans-Top of Bottom Slab	2080
C	5/8"	6'-9"	260	Straight	Ins. Face Vert. - Outside Wall	—
D	5/8"	6'-9"	260	Straight	Bottom Slab to Outside Wall	1630
E	5/8"	10'-0"	260	Straight	Outside Wall to Top Slab	2720
F	—	—	—	Straight	Dowels - Bot. Slab to Wall	—
G	—	—	—	Straight	Vert. - Interior Walls	—
H	5/8"	3'-8"	36	Straight	Long-Top of Bot. Slab	1190
J	—	—	—	Straight	Long - Interior Walls	—
K	5/8"	3'-8"	29	Straight	Long - Exterior Walls	660
						8280

This dimension constant for all values of L_o

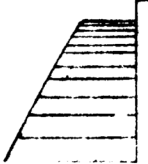
Hold down in place with wire ties to perforated legs



2. gal. 3/4" to be tied by the treatment.

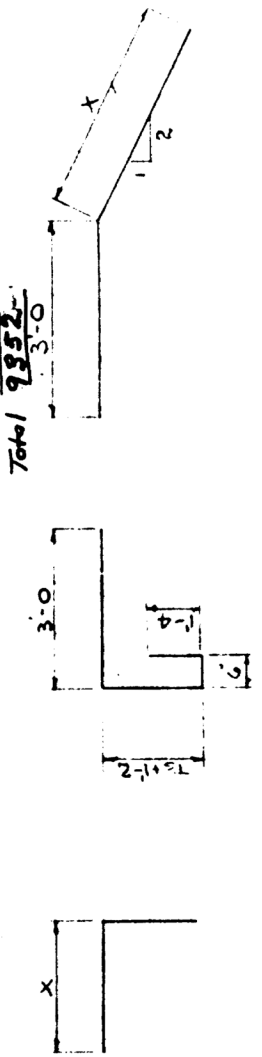
PANASON DAM IN EXTERIOR WALL AND TOP SLAB

SECT. C-C



BOX ENTRANCE REINFORCING SCHEDULE FOR TWO ENDS

MARK	TYPE	NO. SIZE X	LENGTH	WEIGHT	NO. SIZE X	LENGTH	WEIGHT	NO. SIZE X	LENGTH	WEIGHT
A ₁	STR	20 1/2"	6'-6"	95.56	28 1/2"	7'-8"	143.46	36 5/8"	8'-0"	300.30
A ₂	STR	26 1/2"	10'-0"	173.88	28 1/2"	12'-0"	224.56	28 5/8"	15'-0"	438.70
C ₁	B	18 1/2"	6'-9"	72.14	18 1/2"	6'-9"	81.18	18 5/8"	6'-9"	121.50
C ₂	STR	4 1/2"	6'-6"	13.36	4 1/2"	7'-8"	20.54	4 5/8"	8'-0"	33.44
WV ₁	A	12 1/2"	3'-0"	4.08	12 1/2"	3'-0"	4.08	12 3/8"	3'-0"	5.6
WV ₂	A	6 1/2"	3'-0"	0.70	12 1/2"	3'-0"	5.612	12 3/8"	3'-0"	7.0
WV ₃	A	8 1/2"	3'-0"	0.80	12 1/2"	3'-0"	6.614	12 3/8"	3'-0"	8.0
WV ₄	A	8 1/2"	3'-0"	0.80	12 1/2"	3'-0"	6.614	12 3/8"	3'-0"	8.0
WH ₁	STR	20 1/2"	10'-0"	135.60	20 1/2"	12'-0"	160.32	20 3/8"	15'-0"	312.90
WH ₂	STR	4 1/2"	8'-0"	21.38	4 1/2"	10'-0"	26.72	4 5/8"	12'-0"	54.24
WH ₃	STR	8 1/2"	8'-0"	32.06	8 1/2"	8'-0"	42.76	8 3/8"	10'-0"	91.76
WH ₄	STR	4 1/2"	6'-0"	16.04	4 1/2"	6'-0"	16.04	4 5/8"	8'-0"	37.54
WH ₅	STR	8 1/2"	7'-0"	29.20	8 1/2"	7'-0"	29.20	8 3/8"	9'-0"	58.40
WV ₁₀	STR	4 1/2"	2'-0"	6.68	4 1/2"	2'-6"	6.68	4 5/8"	2'-6"	10.44
WV ₁₁	STR	4 1/2"	3'-0"	10.68	4 1/2"	4'-0"	10.68	4 5/8"	4'-0"	16.68
WV ₁₂	STR	4 1/2"	5'-0"	14.70	4 1/2"	5'-6"	14.70	4 5/8"	5'-6"	22.94
WV ₁₃	STR	4 1/2"	7'-0"	29.20	4 1/2"	7'-0"	29.20	4 5/8"	7'-0"	44.40
WS	C	8 1/2"	7'-8"	18.18	8 1/2"	7'-8"	18.18	8 3/8"	7'-8"	18.18
A ₁		22 1/2"	12'-8"	160.20	28 1/2"	14'-0"	270.45	36 5/8"	15'-4"	515.01
A ₂		44 1/2"	10'-0"	245.92	52 1/2"	9'-0"	417.04	58 3/8"	15'-0"	815.80
C ₁		28 1/2"	6'-9"	120.26	32 1/2"	6'-9"	144.32	38 3/8"	6'-9"	216.00
C ₂		4 1/2"	12'-8"	33.44	4 1/2"	14'-0"	34.32	4 5/8"	15'-4"	64.00
Total for 1 cell				890			1072			2108
Total for 2 cells				1112			1408			2684



TYPE A BAR TYPES TYPE B TYPE C

NOTE: Approximate steel weight = 10 lb per cu yd. of conc.

REFER TO DWG. 1023-P

GENERAL DETAILS OF STANDARD CONCRETE BOX CULVERTS