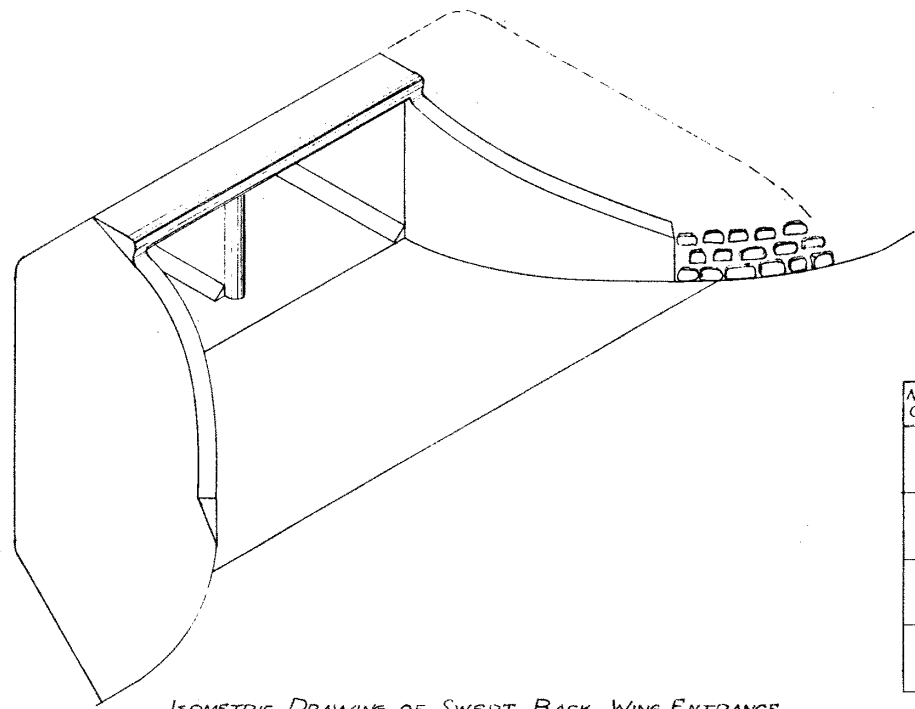
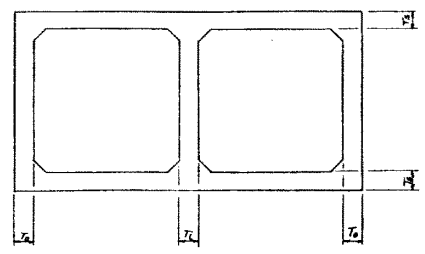


**CONCRETE WING DIMENSIONS**

MARK	DIMENSION		
	5'-6"	6'-6"	8'-0"
V	5'-6"	6'-6"	8'-0"
A	3'-11"	4'-8"	6'-0"
B	2'-0"	2'-0"	2'-0"
D	10'	10'	1'-0"
E	8'	8'	10'
F	10'	10'	1'-0"
G	3 1/4'	3 3/8'	11 1/2'
a	1'-0"	1'-0"	1'-0"
b	1-1	1-0 3/4	1-0 1/2
c	1-4	1-3	1-2 1/8
d	1-8 3/8	1-6 3/8	1-4 1/8
e	2-3 3/4	1-11 7/8	1-8 5/8
f	3'-0 1/2	2'-6 1/2	2'-1 1/2
g	3'-11 1/4	3'-2 5/8	2'-7 1/2
h	5'-0	4'-0 1/4	3'-2 1/2
k		4'-11 3/8	3'-10 3/8
m		6'-0	4'-7 3/8
n			5'-6 1/4
o			6'-6
p			7'-6



ISOMETRIC DRAWING OF SWEEP BACK WING ENTRANCE

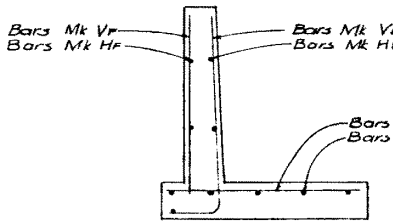
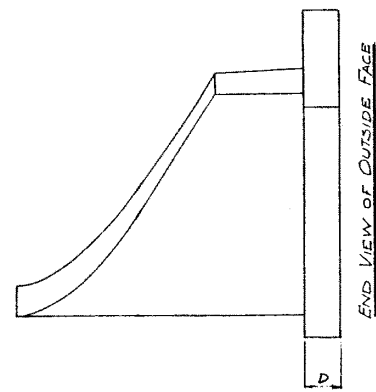
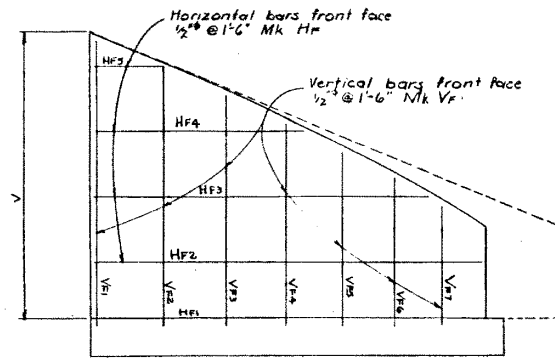
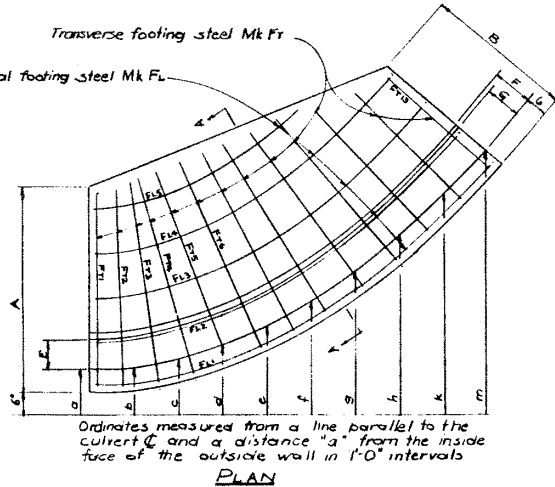
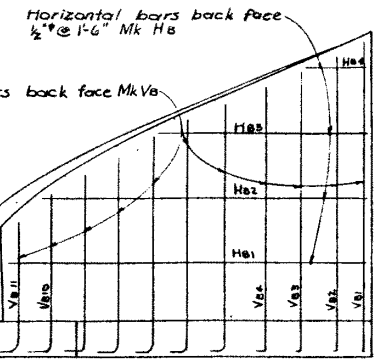
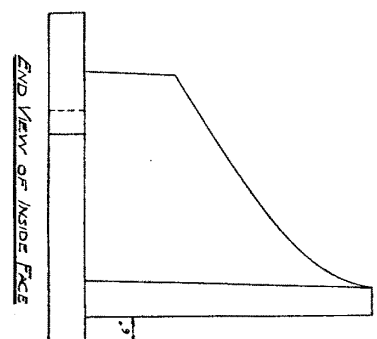


**CULVERT BARRELL DIMENSIONS**

No of CELLS	DEPTH OF COVER	5'-6" x 5'-6"			6'-6" x 6'-6"			6'-6" x 8'-0"		
		T <sub>1</sub>	T <sub>2</sub>	T <sub>3</sub>	T <sub>1</sub>	T <sub>2</sub>	T <sub>3</sub>	T <sub>1</sub>	T <sub>2</sub>	T <sub>3</sub>
1	0-10'									
	10-20'									
	20-30'									
2	0-10'									
	10-20'									
	20-30'									
3	0-10'									
	10-20'									
	20-30'									
4	0-10'									
	10-20'									
	20-30'									

**SWEEP BACK WING REINFORCING SCHEDULE**

MARK	TYPE	5'-6" x 5'-6"				6'-6" x 6'-6"				6'-6" x 8'-0"			
		No	SIZE	X	LENGTH	No	SIZE	X	LENGTH	No	SIZE	X	LENGTH
FL1	Curved	2	1/2"		9'-4"	2	1/2"		10'-6"	2	1/2"		13'-11"
FL2	Curved	1			7'-5"	1			9'-9"	1			13'-2"
FL3	Curved				6'-0"	1			8'-4"	1			12'-0"
FL4	Curved				3'-5"	1			6'-2"	1			9'-8"
FL5	Curved								2'-10"	1			7'-3"
FL6	Curved												4'-8"
FR1	Str	1	1/2"		3'-7"	1	1/2"		4'-4"	1	5/8"		5'-9"
FR2	Str				3'-7"				4'-4"				5'-9"
FR3	Str				3'-8"				4'-4"				5'-9"
FR4	Str				3'-6"				4'-4"				5'-9"
FR5	Str				3'-3"				4'-3"	1	1/2"		5'-9"
FR6	Str				3'-1"				4'-1"				5'-8"
FR7	Str				2'-10"				4'-0"				5'-7"
FR8	Str				2'-4"				3'-9"				5'-6"
FR9	Str				1'-11"				3'-6"				5'-5"
FR10	Str								3'-1"				5'-3"
FR11	Str								2'-7"				5'-0"
FR12	Str								2'-1"				4'-9"
FR13	Str												4'-6"
FR14	Str												4'-1"
FR15	Str												3'-7"
FR16	Str												3'-0"
FR17	Str												2'-4"
FR18	Str												1'-10"
VB1	A	1	1/2"	11 1/4"	6'-5"	2'			7'-9"	2'	5/8"	1-2 1/2"	9'-7"
VB2	A				6'-4"	10'			7'-6"	7'			6'-0"
VB3	A				5'-10"	1'-0"			7'-1"	10'			5'-2"
VB4	A				5'-5"	1'-0"			6'-8"	10'			6'-0"
VB5	A				4'-11"	1'-0"			6'-2"	1'-0"			8'-11"
VB6	A				4'-5"	1'-0"			5'-9"	1'-0"	1/2"	1-1 3/4"	8'-8"
VB7	A				4'-0"	1'-0"			5'-3"	1'-0"			8'-4"
VB8	A				3'-6"	1'-0"			4'-10"	1'-0"			8'-1"
VB9	A								4'-4"	1'-0"			7'-10"
VB10	A								3'-10"	1'-0"			7'-5"
VB11	A								3'-5"	1'-0"			7'-1"
VB12	A												6'-7"
VB13	A												6'-2"
VB14	A												5'-9"
VB15	A												5'-3"
VB16	A												4'-9"
VB17	A												4'-4"
VB18	A												3'-11"
HB1	Curved	1	1/2"		6'-10"	1'-6"			9'-5"	1'-6"	1	1/2"	13'-0"
HB2	Curved				5'-1"	1'-6"			7'-5"	1'-6"			10'-11"
HB3	Curved				1'-11"	1'-6"			4'-2"	1'-6"			7'-7"
HB4	Curved								11"	1'-6"			4'-3"
HB5	Curved												0'-11"
VR1	Str	1	1/2"		5'-11"	2'			6'-11"	2'	1	1/2"	8'-6"
VR2	Str				5'-4"	1'-6"			6'-3"	1'-6"			7'-10"
VR3	Str				4'-8"	1'-6"			5'-8"	1'-6"			7'-3"
VR4	Str				4'-1"	1'-6"			5'-0"	1'-6"			6'-7"
VR5	Str				3'-5"	1'-6"			5'-4"	1'-6"			5'-10"
VR6	Str				2'-10"	1'-6"			3'-8"	1'-6"			5'-3"
VR7	Str								3'-1"	1'-6"			4'-7"
VR8	Str												3'-11"
VR9	Str												3'-2"
VR10	Str												2'-7"
HR1	Curved	1	1/2"		8'-0"	1'-6"			10'-3"		1	1/2"	15'-9"
HR2	Curved				5'-10"	1'-6"			8'-0"				11'-4"
HR3	Curved				2'-0"	1'-6"			4'-6"				8'-0"
HR4	Curved								1'-0"				4'-9"
HR5	Curved												1'-3"



TYPE A BAR

TYPICAL SWEEP BACK WING ENTRANCE

DESIGNED BY \_\_\_\_\_  
 CHECKED BY \_\_\_\_\_  
 DATE \_\_\_\_\_  
 DATE \_\_\_\_\_

**DELETE**

**SUPERSEDED**

SUPERSEDED BY 5-538, 1954

GENERAL DETAILS OF STANDARD  
 CONCRETE BOX CULVERTS

GOVERNMENT OF THE PROVINCE OF ALBERTA  
 DEPARTMENT OF HIGHWAYS  
 BRIDGE BRANCH, EDMONTON

FILE NO. \_\_\_\_\_ HWY. NO. \_\_\_\_\_ DWG. NO. 5538-53  
 LOCATION \_\_\_\_\_ SCALE \_\_\_\_\_  
 STREAM \_\_\_\_\_ SHEET 2 OF 2

NO.	DATE	DESCRIPTION	BY