

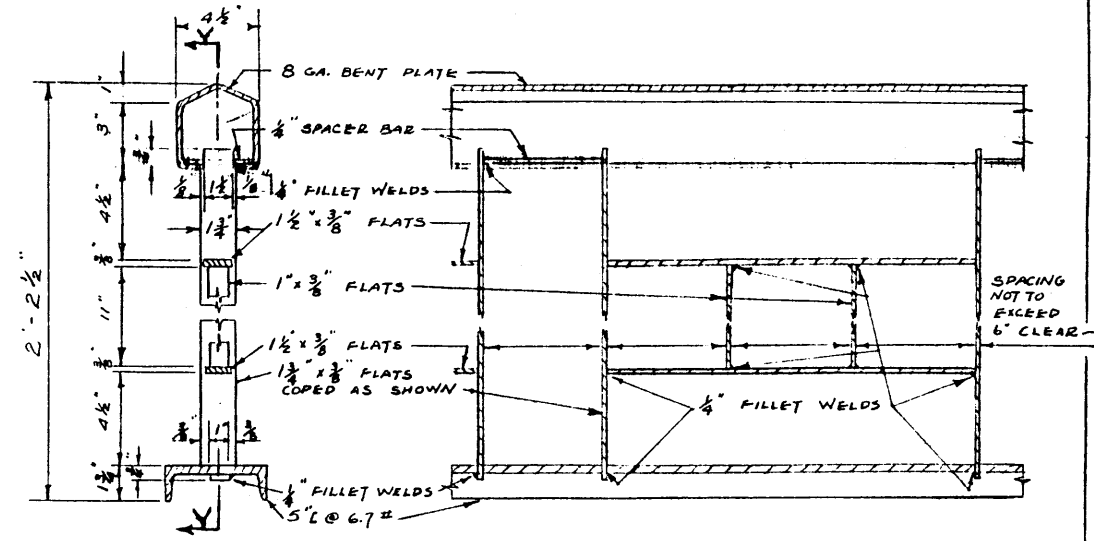
FOR DETAILS OF CONCRETE OR STEEL POSTS SEE BRIDGE DWG.

ELEVATION

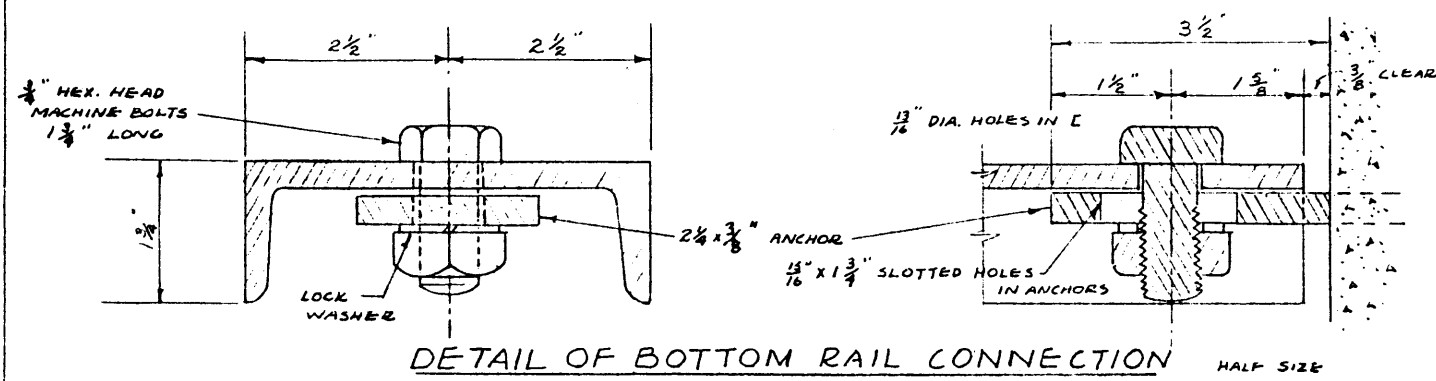
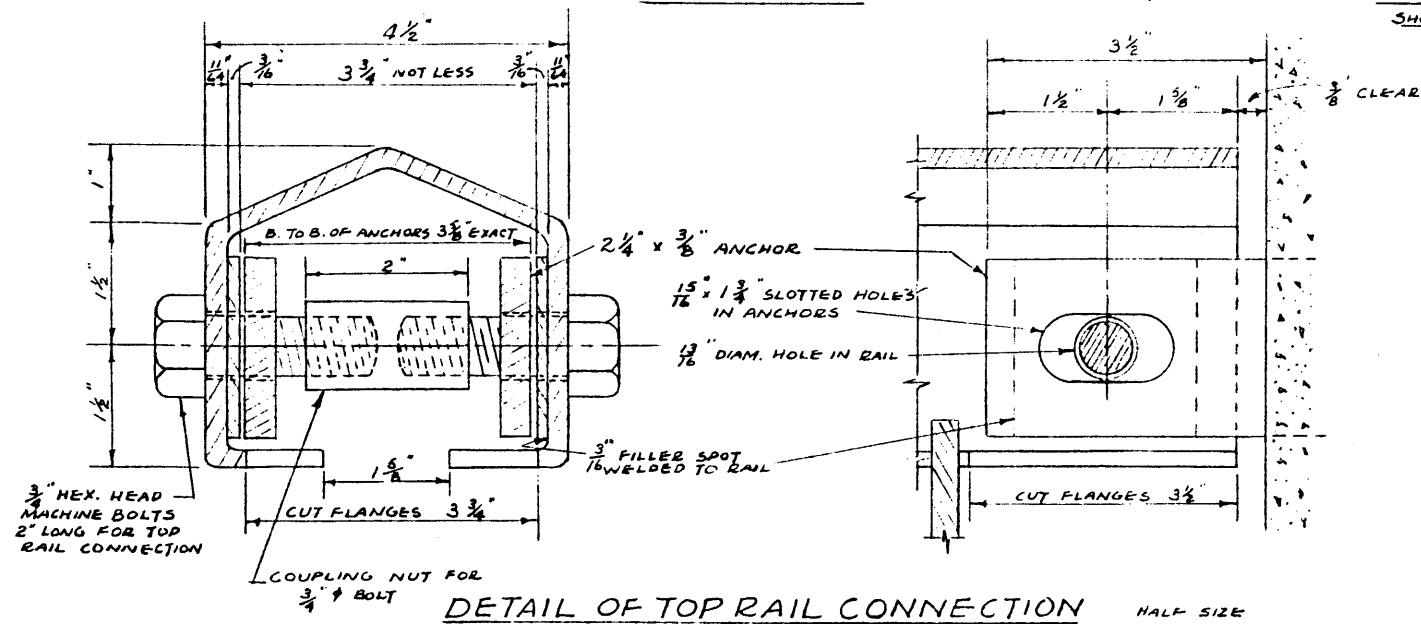
SCALE - $\frac{3}{4}$ " = 1'-0"

END ELEV. OF POST

SHOWING DIMENSIONS FOR SETTING ANCHORS



SECTION X-X SCALE $\frac{1}{2}$ " = 1'-0" SECTION Y-Y



BILL OF MATERIAL	
No.	DETAILS (NTS.)
ANCHORS "R" $2\frac{1}{4}$ " x $\frac{3}{8}$ "	
ANCHORS "S" $2\frac{1}{4}$ " x $\frac{3}{8}$ "	
ANCHORS "T" $2\frac{1}{4}$ " x $\frac{3}{8}$ "	
$\frac{3}{8}$ " HEXAGON HEAD MACHINE BOLTS $1\frac{1}{2}$ " LONG EACH WITH ONE SQUARE NUT AND ONE LOCK WASHER $\frac{3}{4}$ " HEXAGON HEAD MACHINE BOLTS 2" LONG COUPLING NUTS FOR $\frac{3}{4}$ " BOLTS	

NOTE: SLOTTED HOLES IN ANCHORS MUST BE FINISHED SMOOTH AND TRUE

AT & U - RECORDS CENTRE
 F19664

APPROVED
 CHIEF BRIDGE ENGINEER

FILE NO.
 NOTE: - ALL STEEL INCLUDING BOLT HEADS, NUTS AND ANCHORS, TO BE GIVEN ONE SHOP COAT OF PAINT APPLIED BY BRUSH AS PER SPECIFICATIONS
 APRIL 28, 1953

STANDARD HIGHWAY
 TYPE HANDRAIL
 DEPARTMENT OF
 HIGHWAYS BRIDGE BRANCH
 DWG. No.
 S 539
 CONTRACT NUMBER