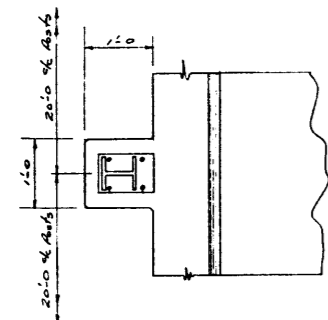
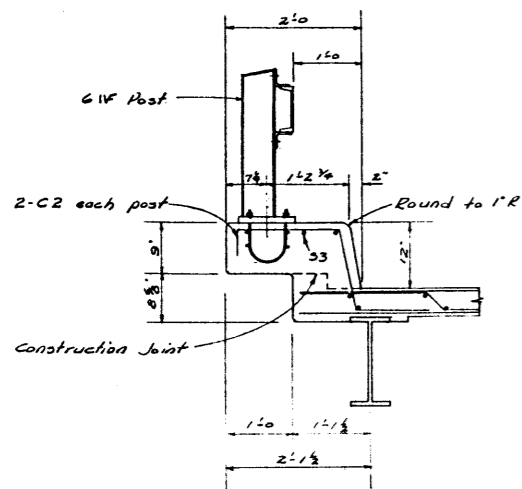
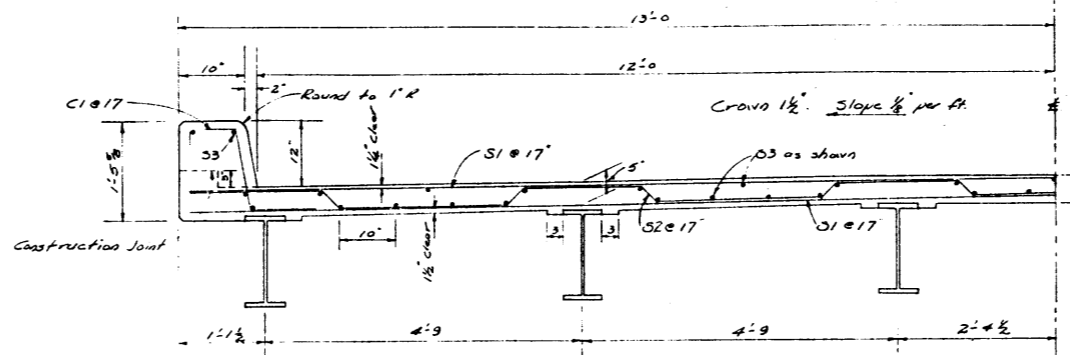


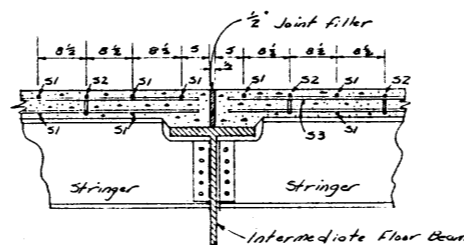
DESIGNED BY: _____ DATE: _____
 DETAILED BY: T.A.T. DATE: 27.5.56. 18.53
 CHECKED BY: _____ DATE: _____



DETAIL AT POST
 Posts to be placed at mid-panel points, 20'-0" c/c



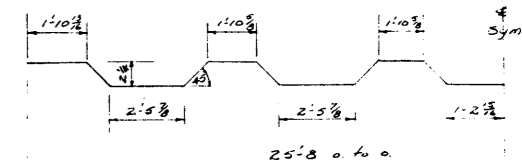
HALF SLAB SECTION



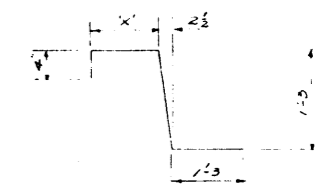
DETAIL AT INTERMEDIATE FLOOR BEAM
 Map top floor beam flange with hot tar immediately before pouring slab.

BAR LIST

MARK	NO	SIZE	TYPE	X	LENGTH	WEIGHT
S1	282	5	3/4"		25'-3"	1549
S2	130	5	A		26'-3"	3559
S3	430	4	3/4"		19'-8"	3649
C1	280	5	B	6"	3'-5"	999
C2	40	6	B	1'-6"	4'-5"	266
						18022



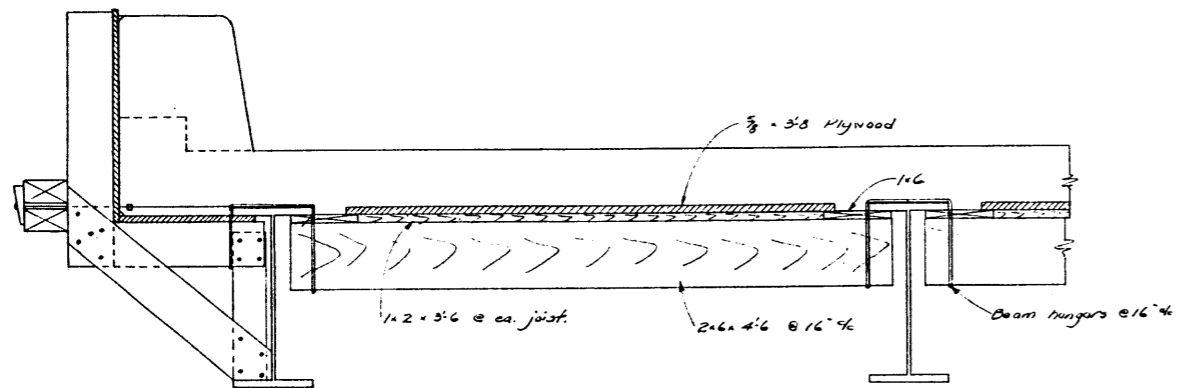
TYPE A



TYPE B

Bar dimensions are out to out.

QUANTITY ESTIMATE
 Concrete - Class B - 970 cu yd.
 Reinforcing steel - 18022 lbs.



NO.	DATE	DESCRIPTION	BY

**STANDARD THROUGH TRUSS SPAN
 SLAB DETAILS**

GOVERNMENT OF THE PROVINCE OF ALBERTA
 DEPARTMENT OF HIGHWAYS
 BRIDGE BRANCH, EDMONTON

FILE NO.	HWY. NO.	DWG. NO.
LOCATION	SCALE	S 530
STREAM	SHEET	OF

AT & U - RECORD CENTRE