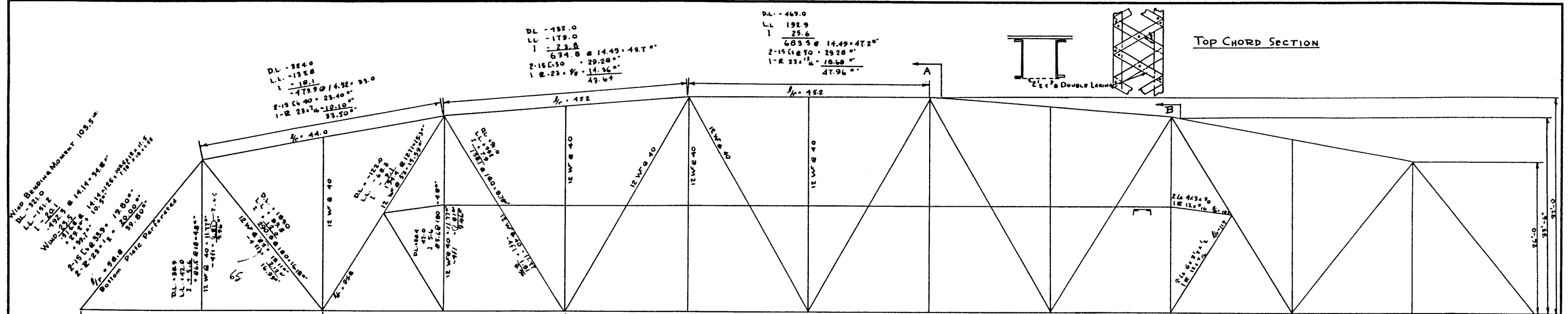
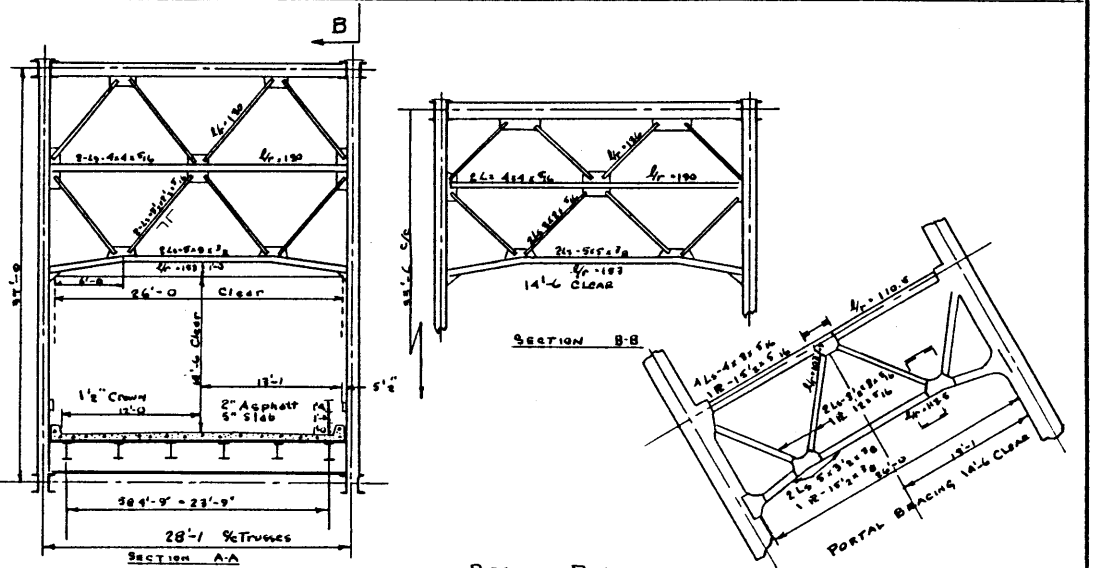
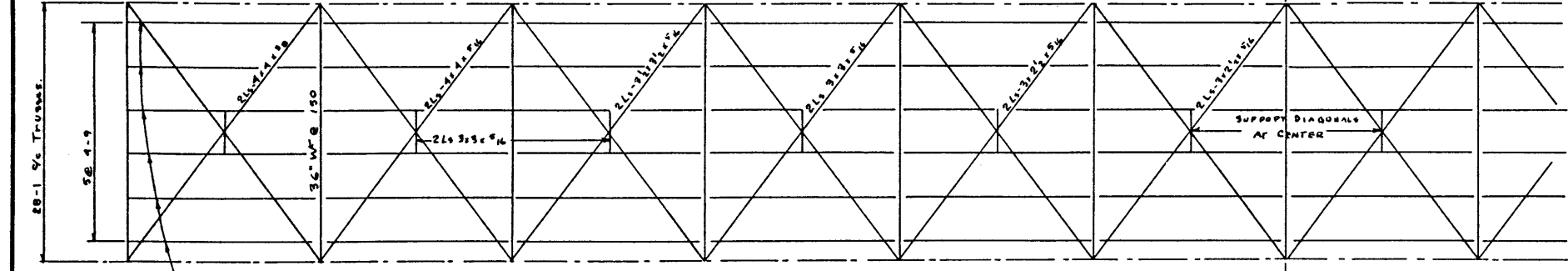
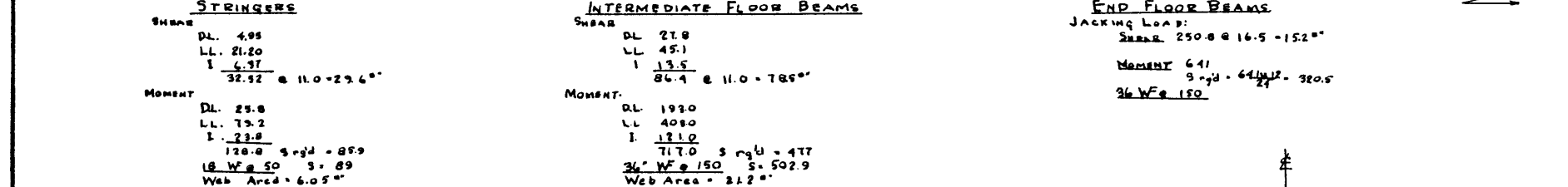


DESIGNED BY: R.C.E.
 CHECKED BY: _____
 DATE: _____
 DATE: _____



DL + 201.0 LL + 83.7 I + 11.2 295.3 @ 18 16.4" WIND 42.6 379.5 @ 22.5 15.1"	DL - 201.0 LL + 83.7 I - 11.2 WIND - 89.6 380.5 @ 22.5 16.9"	DL - 384.0 LL - 159.6 I - 21.2 564.8 @ 18 31.3" WIND 116.2 681.0 @ 22.5 30.7"	DL + 384.0 LL + 159.6 I + 21.2 WIND + 140.0 704.8 @ 22.5 31.3"	DL + 450.0 LL + 187.6 I + 24.9 662.5 @ 18 34.6" WIND 155.7 818.2 @ 22.5 36.4"	DL - 450.0 LL - 187.6 I - 24.9 WIND - 161.1 829.6 @ 22.5 36.9"
--	---	--	---	--	---



DESIGN DATA

DEAD LOADS:
 Deck - 5" Concrete + 2" Asphalt = 1285#/ft truss
 Floor Steel & Handrail = 260#/ft truss
 Truss = 690#/ft truss
 TOTAL = 2185 #/ft

LIVE LOADS:
 For Floor - 1-H20-516 Truck
 For Truss 640#/ft lineal ft of loaded lane
 Plus 18,000# Concentrated load for Moment or 26,000# for Shear.

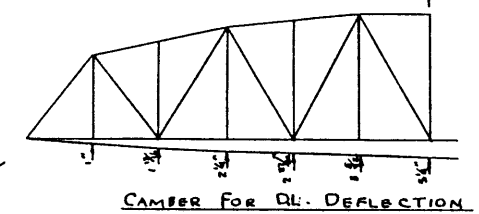
WIND LOAD:
 Top Chord - 190#/ft lineal ft.
 Bottom Chord - 300#/ft
 Live Load - 200#/ft applied 6 ft above roadway.

IMPACT
 15.3% to live loads only for truss
 30.0% to live loads only for floor

SPECIFICATIONS
 A.A. S.H.O. - 1959

WELD STRESS
 Tension - 18,000#/in²
 Compression 15,000 #/in²
 Unit Stresses increased 250% for DL + L.L. + Impact + Wind
 Shear on Webs - 11,000#/in²
 Rivets shear - 13,500#/in²
 bearing - 27,000#/in²

GENERAL
 Shop Point one coat red lead
 Gussat Plate - 3/8" min thickness
 Rivets - 3/4"



NO.	DATE	DESCRIPTION	BY
1	18-Sept-57	RETRACED	R.F.S.
2	21-April-58	Ref of U.L. from 3/4" to 1 1/4"	R.S.R.

REVISIONS

**STANDARD 250 FT THROUGH SPAN
 TRUSS DESIGN SHEET**

**GOVERNMENT OF THE PROVINCE OF ALBERTA
 DEPARTMENT OF HIGHWAYS
 BRIDGE BRANCH, EDMONTON**

FILE NO. _____ HWY. NO. _____ DWG. NO. _____
 LOCATION _____ SCALE _____
 STREAM _____ SHEET _____ OF _____

S-581

AT & U RECORDS CENTRE
 11/16/2017