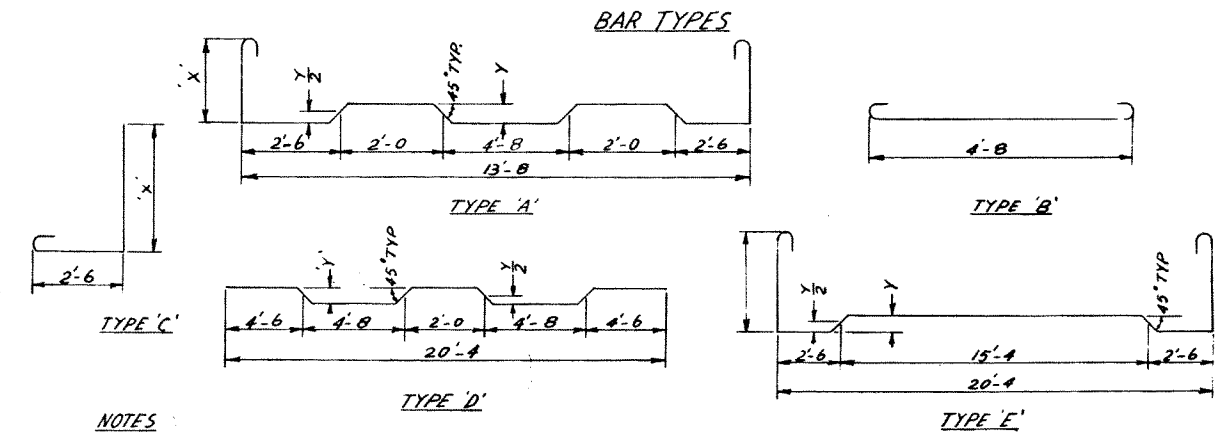
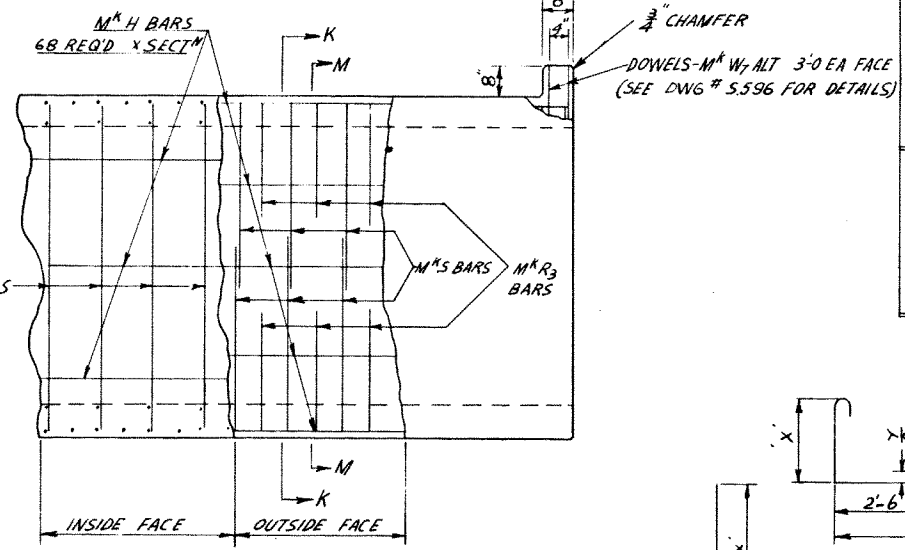
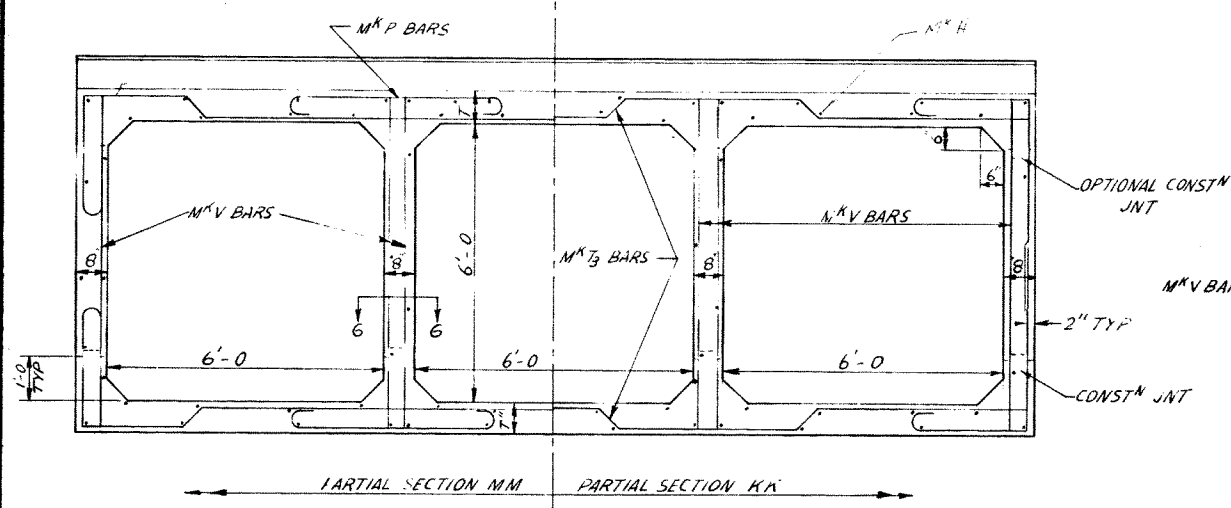
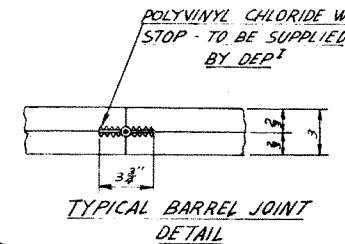
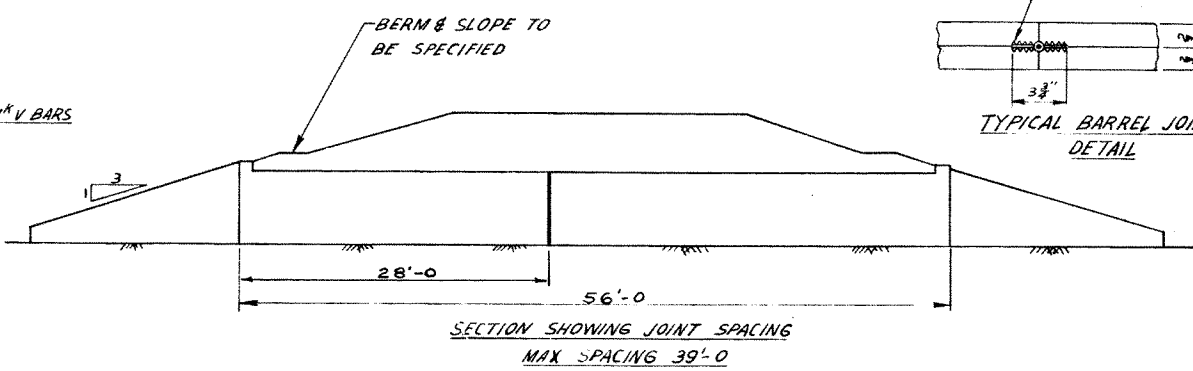
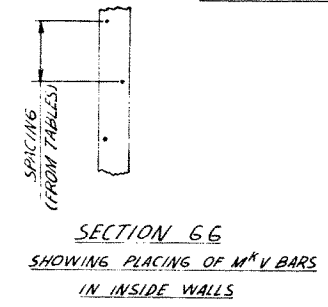


TRIPLE-CELL CULVERTS BAR LIST

MAX COVER	MK	NO REQ'D	SIZE	TYPE	DIMM 'X'	DIMM 'Y'	SPACING	LENGTH	WEIGHT	
5'-0"	H	136	4	STR			AS SHOWN	27'-8"	2510	
	P	216	5	B			1'-1"	5'-8"	1280	
	R ₃	108	4	E	2'-6"	4"	1'-1"	26'-6"	1910	
	S	216	4	C	4'-6"		1'-1"	7'-5"	1075	
	T ₃	108	5	D		4"	1'-1"	21'-0"	2370	
7'-8"	V	324	4	STR			1'-1"	7'-0"	1515	
	10,660*									
	10'-0"	H		4	STR			AS SHOWN		
		P		5	B			8 1/2"	5'-8"	
		R ₃		4	E	2'-6"	4"	8 1/2"	26'-6"	
S			4	C	4'-6"		8 1/2"	7'-5"		
T ₃			5	D		4"	8 1/2"	21'-0"		
11 1/2"	V		4	STR			8 1/2"	7'-0"		
	H		4	STR			AS SHOWN			
	P		5	B			8 1/2"	5'-8"		
	R ₃		4	E	2'-9"	7"	8 1/2"	27'-2"		
	S		4	C	4'-9"		8 1/2"	7'-8"		
T ₃			5	D		7"	8 1/2"	21'-4"		
	V		4	STR			8 1/2"	7'-6"		



- NOTES
1. BAR DIMENSIONS OUT TO OUT
 2. MINIMUM BAR COVER 2"
 3. FOR DETAILS OF APRONS & WINGWALLS SEE DWG # 5596
 4. ALL HOOKED BARS TO BE SUPPLIED WITH 'MINIMUM' HOOKS



6'x6' CONCRETE TRIPLE-CELL CULVERT DETAILS

GOVERNMENT OF THE PROVINCE OF ALBERTA
DEPARTMENT OF HIGHWAYS
BRIDGE BRANCH, EDMONTON

FILE NO. 1334 HWY. NO. 6A DWG. NO. S.597-1
LOCATION W/SW 35-6-30-4 SCALE AS SHOWN
STREAM CREEK SHEET 3 OF 3

NO.	DATE	DESCRIPTION	BY
4			
3			
2			
1			

REVISIONS

DESIGNED BY _____ DATE _____

DETAILED BY _____ DATE _____

CHECKED BY _____ DATE _____