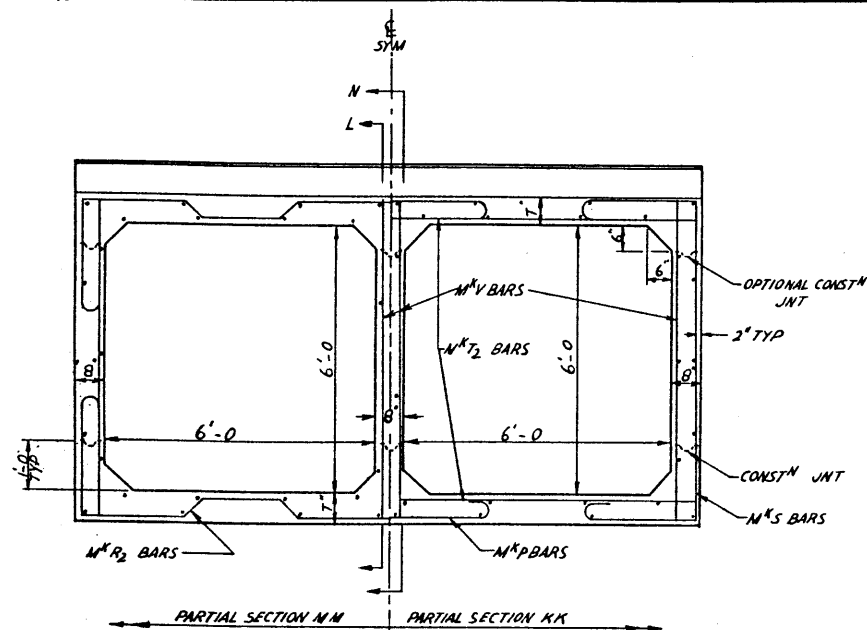


DOUBLE-CELL CULVERTS BAR LIST

MAX COVER	M <sup>N</sup>	N <sup>O</sup> REQ'D	SIZE	TYPE	DIM <sup>N</sup> 'X'	DIM <sup>N</sup> 'Y'	SPACING	LENGTH	WEIGHT
5'-0"	H	4	STR				AS SHOWN		
	P	5	B				1'-0"	5'-8"	
	R <sub>2</sub>	5	A	2'-6"	4"		1'-0"	20'-3"	
	S	4	C	4'-6"			1'-0"	7'-5"	
	T <sub>2</sub>	4	STR				1'-0"	13'-8"	
7'-8"	V	4	STR				1'-0"	7'-0"	
	H	4	STR				AS SHOWN		
	P	5	B				8 1/2"	5'-8"	
	R <sub>2</sub>	5	A	2'-6"	4"		8 1/2"	20'-3"	
	S	4	C	4'-6"			8 1/2"	7'-5"	
10'-0"	T <sub>2</sub>	4	STR				8 1/2"	13'-8"	
	V	4	STR				8 1/2"	7'-0"	
	H	4	STR				AS SHOWN		
	P	5	B				8 1/2"	5'-8"	
	R <sub>2</sub>	5	A	2'-10"	8"		8 1/2"	21'-6"	
20'-0"	S	4	C	4'-10"			8 1/2"	7'-9"	
	T <sub>2</sub>	4	STR				8 1/2"	13'-8"	
	V	4	STR				8 1/2"	7'-8"	

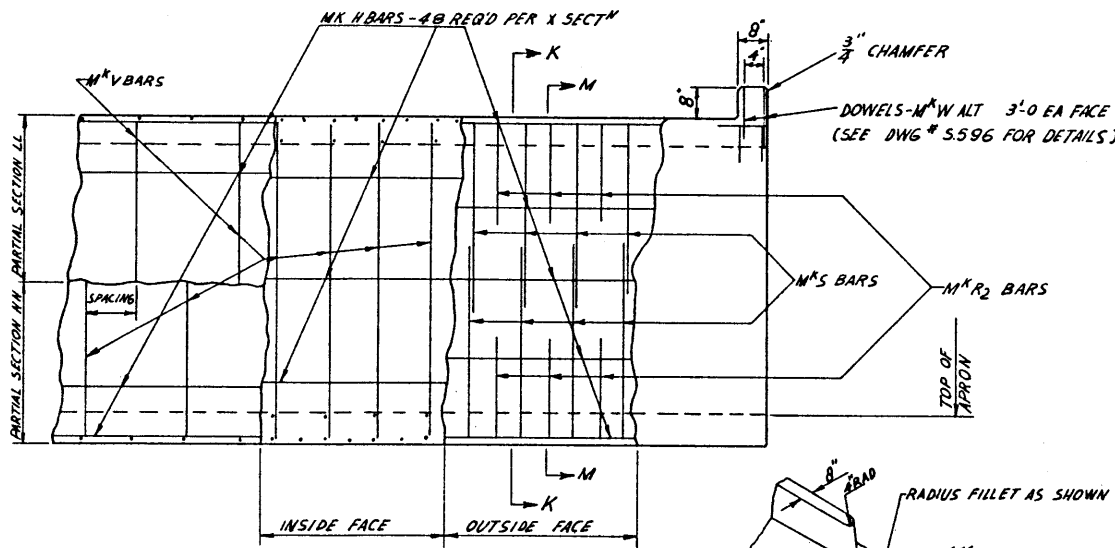
TRIPLE-CELL CULVERTS BAR LIST

MAX COVER	M <sup>N</sup>	N <sup>O</sup> REQ'D	SIZE	TYPE	DIM <sup>N</sup> 'X'	DIM <sup>N</sup> 'Y'	SPACING	LENGTH	WEIGHT
5'-0"	H	4	STR				AS SHOWN		
	P	5	B				1'-1"	5'-8"	
	R <sub>2</sub>	4	E	2'-6"	4"		1'-1"	26'-6"	
	S	4	C	4'-6"			1'-1"	7'-5"	
	T <sub>2</sub>	5	D		4"		1'-1"	21'-0"	
7'-8"	V	4	STR				1'-1"	7'-0"	
	H	4	STR				AS SHOWN		
	P	5	B				8 1/2"	5'-8"	
	R <sub>2</sub>	4	E	2'-6"	4"		8 1/2"	26'-6"	
	S	4	C	4'-6"			8 1/2"	7'-5"	
10'-0"	T <sub>2</sub>	5	D		4"		8 1/2"	21'-0"	
	V	4	STR				8 1/2"	7'-0"	
	H	4	STR				AS SHOWN		
	P	5	B				8 1/2"	5'-8"	
	R <sub>2</sub>	4	E	2'-9"	7"		8 1/2"	27'-2"	
20'-0"	S	4	C	4'-9"			8 1/2"	7'-8"	
	T <sub>2</sub>	5	D		7"		8 1/2"	21'-4"	
	V	4	STR				8 1/2"	7'-6"	

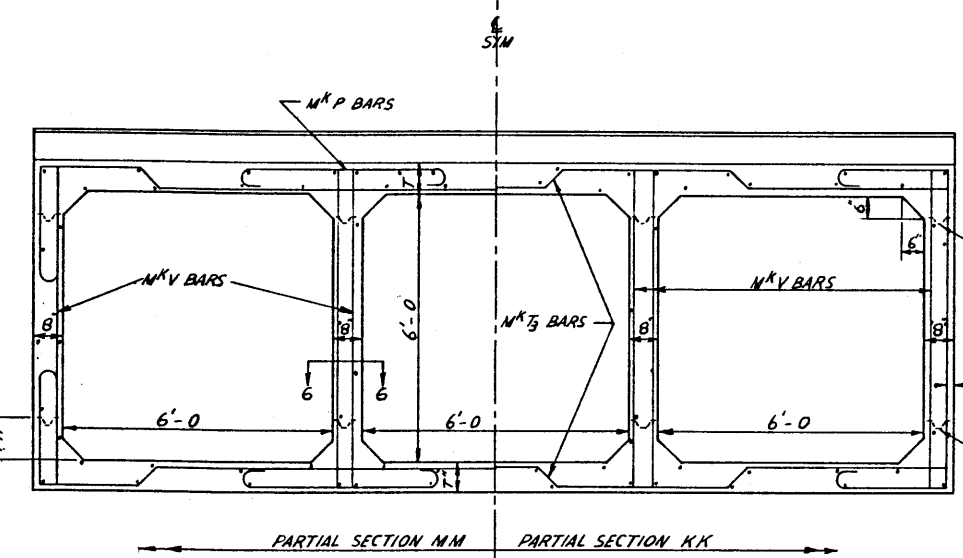
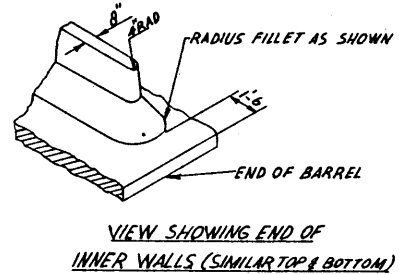


TYPICAL SECTIONS

TWO-CELL CULVERTS

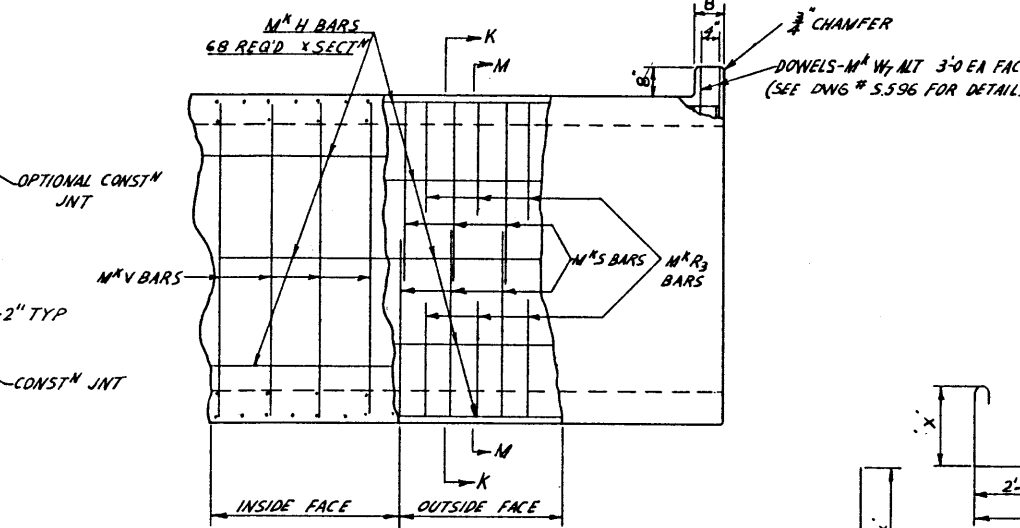


ELEVATION SCALE 1/2" = 1'-0"

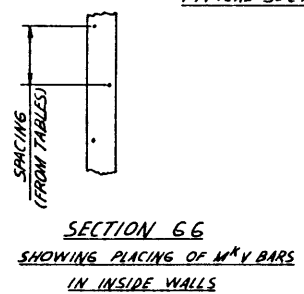


TYPICAL SECTIONS

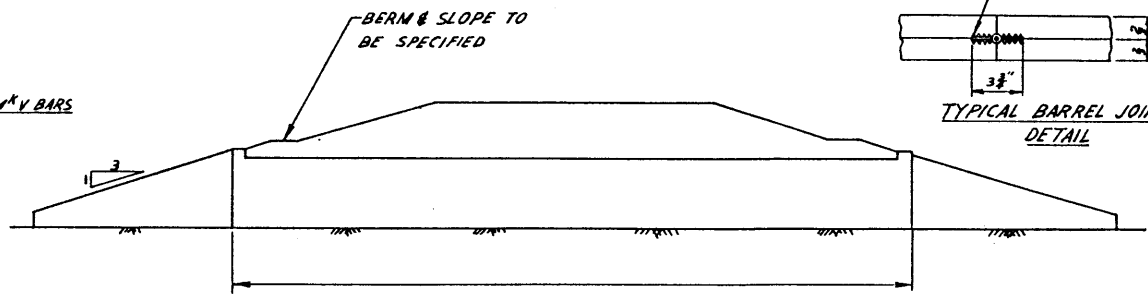
THREE-CELL CULVERTS



ELEVATION SHOWING BAR SPACING IN OUTSIDE WALL



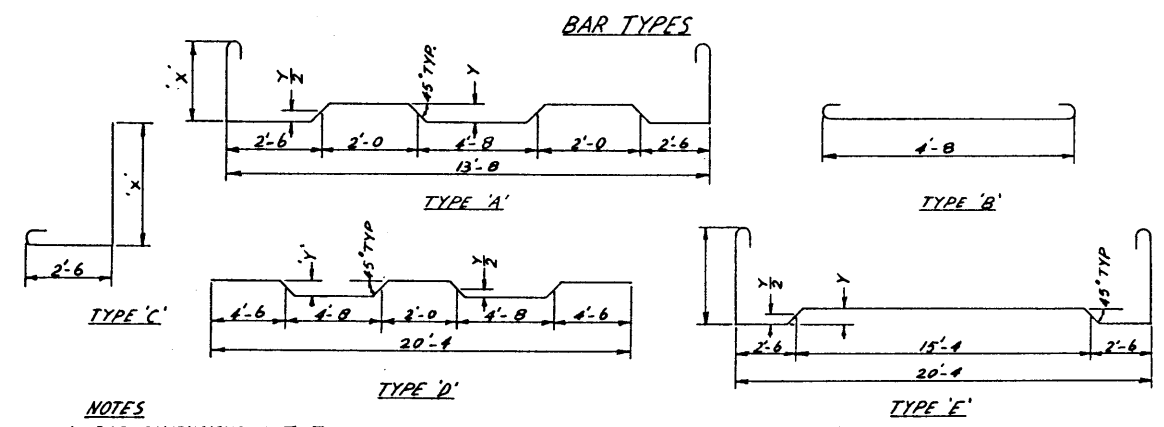
SECTION G-G SHOWING PLACING OF M^K V BARS IN INSIDE WALLS



TYPICAL BARREL JOINT DETAIL



SECTION SHOWING JOINT SPACING MAX SPACING 39'-0"



- NOTES
1. BAR DIMENSIONS OUT TO OUT
  2. MINIMUM BAR COVER 2"
  3. FOR DETAILS OF APRONS & WINGWALLS SEE DWG # 5.596
  4. ALL HOOKED BARS TO BE SUPPLIED WITH 'MINIMUM' HOOKS

6'x6' DOUBLE- & TRIPLE-CELL CULVERT DETAILS

GOVERNMENT OF THE PROVINCE OF ALBERTA  
DEPARTMENT OF HIGHWAYS  
BRIDGE BRANCH, EDMONTON

FILE NO. \_\_\_\_\_ HWY. NO. \_\_\_\_\_ DWG. NO. 5.597  
LOCATION \_\_\_\_\_ SCALE \_\_\_\_\_ SHEET \_\_\_\_\_ OF \_\_\_\_\_  
STREAM \_\_\_\_\_

NO.	DATE	DESCRIPTION	BY

DESIGNED BY \_\_\_\_\_ DATE \_\_\_\_\_  
 CHECKED BY \_\_\_\_\_ DATE \_\_\_\_\_  
 DRAWN BY \_\_\_\_\_ DATE \_\_\_\_\_

11/18/14