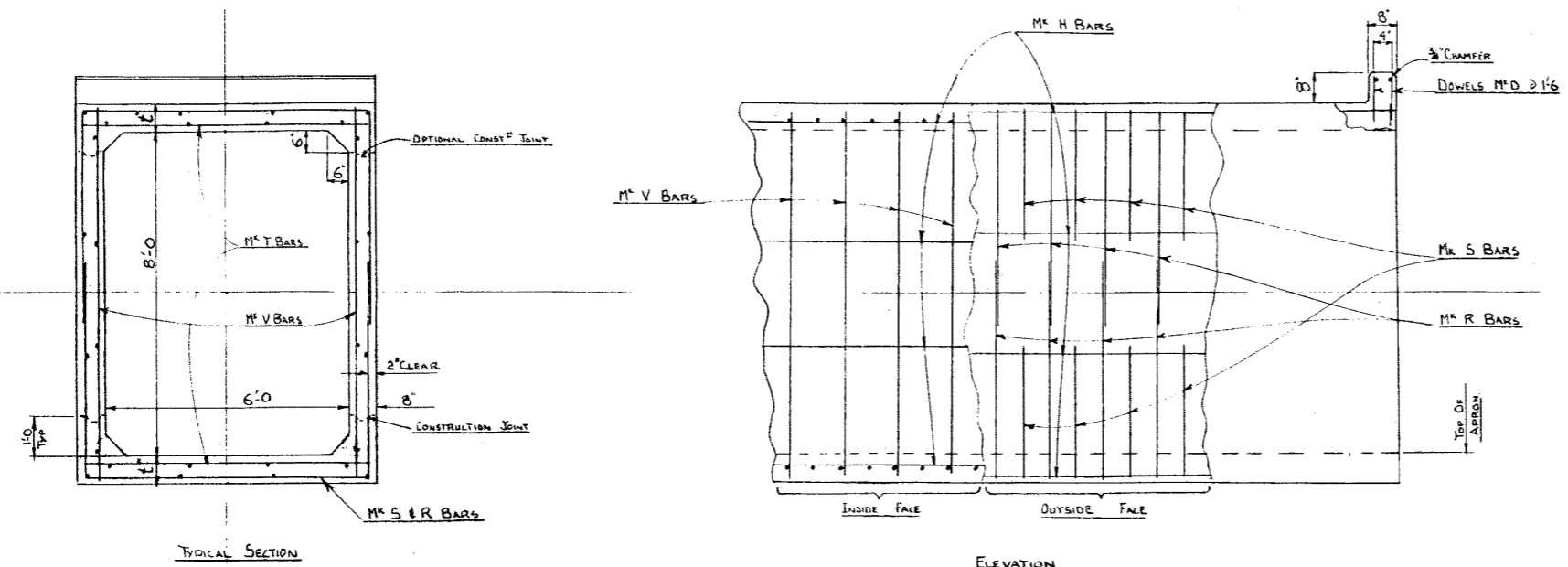


DESIGNED BY _____ DATE _____ 19 55
 CHECKED BY _____ DATE _____ 19 55

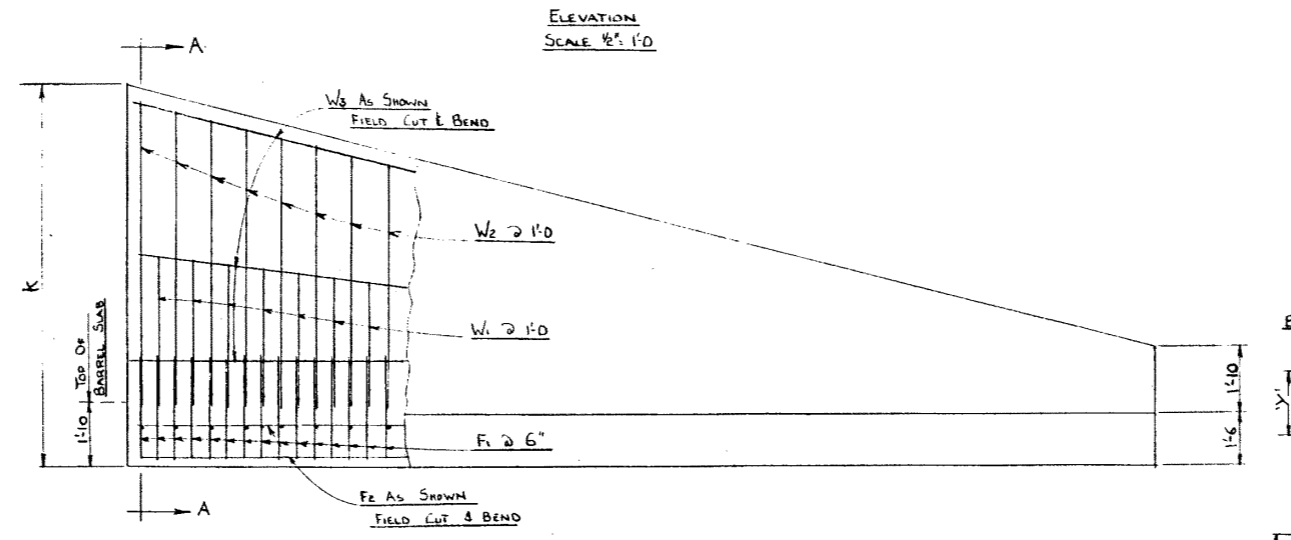
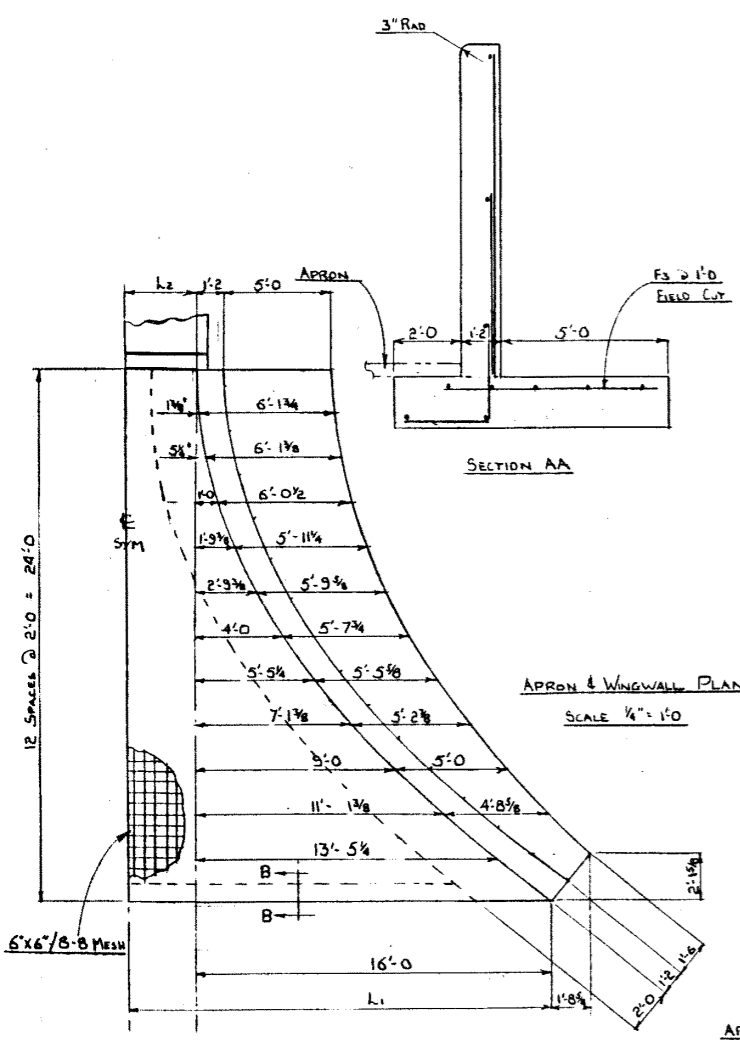


BARREL BAR LIST (SINGLE CELL ONLY)

MAX COVER	M#	N# REOD	SIZE	TYPE	DIM X	DIM Y	SPACING	LENGTH	WEIGHT
5'-0" 1'-8"	R	*4	A	A	6'-11	5'-3	1'-4	17'-5	
	S	*4	A	A	6'-11	3'-2	1'-4	13'-3	
	T	*5	STR				8'	7'-0	
	V	*4	STR				1'-4	9'-0	
	H	*4	STR				AS SHOWN		
10'-0" 1'-8"	R	*5	A	A	6'-11	5'-3	1'-0	17'-5	
	S	*5	A	A	6'-11	3'-2	1'-0	13'-3	
	T	*5	STR				6'	7'-0	
	V	*4	STR				1'-6	9'-0	
	H	*4	STR				AS SHOWN		
20'-0" 1'-10"	R	*5	A	A	6'-11	5'-5	9'	17'-9	
	S	*5	A	A	6'-11	3'-4	9'	13'-7	
	T	*5	STR				4 1/2'	7'-0	
	V	*4	STR				1'-6	9'-4	
	H	*4	STR				AS SHOWN		

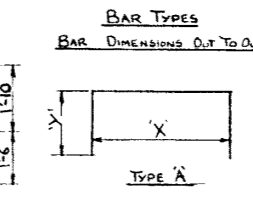
WINGWALL BAR LIST (ALL 6x8 CULVERTS)

M#	N# REOD	SIZE	TYPE	LENGTH	WEIGHT	REMARKS
W1	23	*5	STR	20'-0	480	MAX L: 5'-0 MIN L: 2'-3 108 Pcs
W2	39	*5	STR	20'-0	814	MAX L: 9'-6 MIN L: 2'-2 116 ---
W3	24	*4	STR	16'-6	265	MAX L: 30'-6 MIN L: 30'-0 12 ---
F1	244	*5	B	5'-9	1,463	
F2	52	*4	STR	16'-0	556	MAX L: 30'-0 MIN L: 16'-0 28 ---
F3	31	*6	STR	20'-0	931	MAX L: 6'-2 MIN L: 2'-8 124 ---
				TOTAL	4,509 lbs	



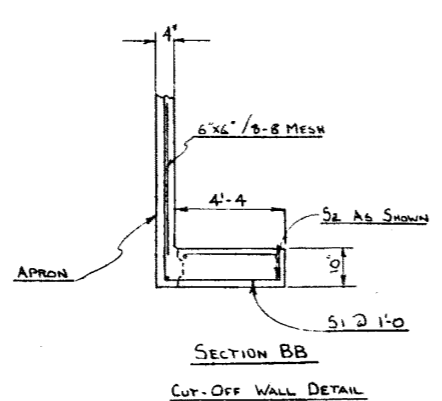
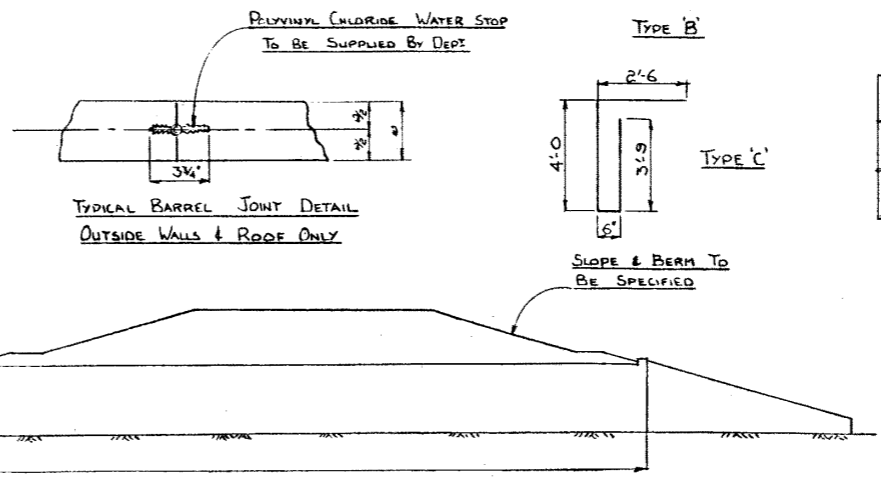
APRON & HEADWALL BAR LIST (ALL 6x8 CULVERTS)

N# OF CELLS	M#	N# REOD	SIZE	TYPE	LENGTH	WEIGHT	TOTAL WT
1	D	20	A	STR	1'-0	13	935 lbs
	S1	62	A	C	10'-9	447	
	S2	16	A	STR	16'-0	171	
	MESH				6x6/8-8	1012 sq ft	
2	D	36	A	STR	1'-0	24	1,122 lbs
	S1	78	A	C	10'-9	560	
	S2	16	A	STR	20'-0	214	
	MESH				6x6/8-8	1,080 sq ft	



APRON & WINGWALL DIMS (ALL 6x8 CULVERTS)

N# OF CELLS	E'	DIMENSIONS			CONCRETE (cu yds)	
		L1	L2	K	BARREL/11	END STRUCT
1	8'	19'-0	3'-0	11'-2	0.776	87.2
	10'	19'-0	3'-0	11'-4	0.866	87.2
2	9'	22'-4	6'-4	11'-3	1.407	91.3
	1'-0	22'-5	6'-5	11'-6	1.852	91.4



SUPERSEDED
 BY 5-598 JULY 23, 1957

SINGLE-CELL 6'-0 x 8'-0 CULVERT & WINGWALL DETAILS

GOVERNMENT OF THE PROVINCE OF ALBERTA
 DEPARTMENT OF HIGHWAYS
 BRIDGE BRANCH, EDMONTON

FILE NO.	HWY. NO.	DWG. NO.
LOCATION	SCALE	5598
STREAM	SHEET	OF

REVISIONS

NO.	DATE	DESCRIPTION	BY
1	July 7/55	2 cell 6'x8' with 25'0 cover added	Willy
2	June 21/55	Revised to cover 2 cell culverts	DGL
3	June 15/55	Length Type C Bar Changed	DGL
4	June 9/55	Dim'ns Corrected	Willy