

STRINGERS

DL Moment	275
LL+1 Moment	1040
Sr = $\frac{131.5 \times 12}{18}$	875
18W @ 50	Ss = 89.0

FLOOR BEAMS

DL Moment	470
LL+1 Moment	3420
Sr = $\frac{589 \times 12}{18}$	3890
27W @ 102	Ss = 266.3

JACKING GIRDER

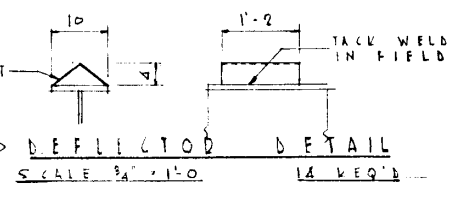
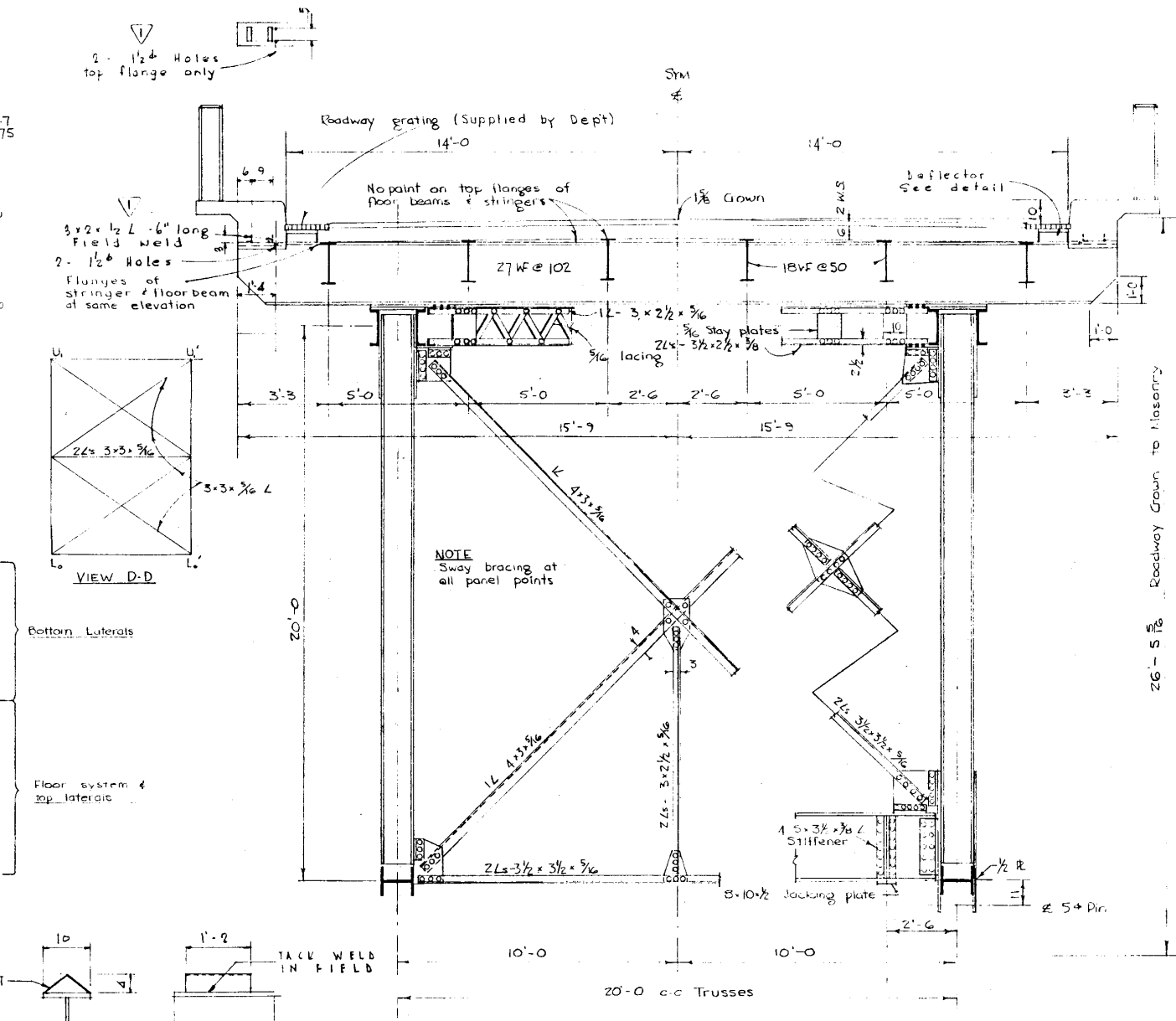
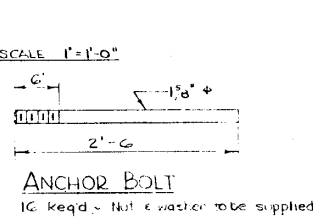
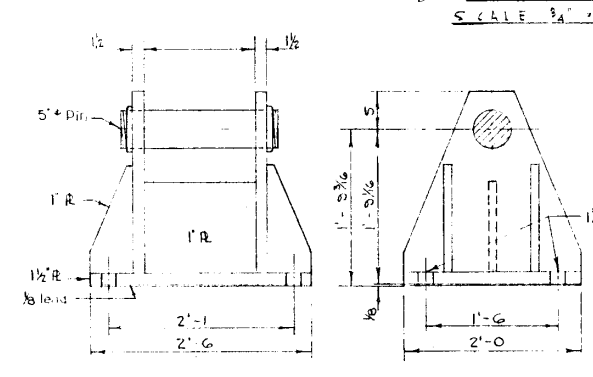
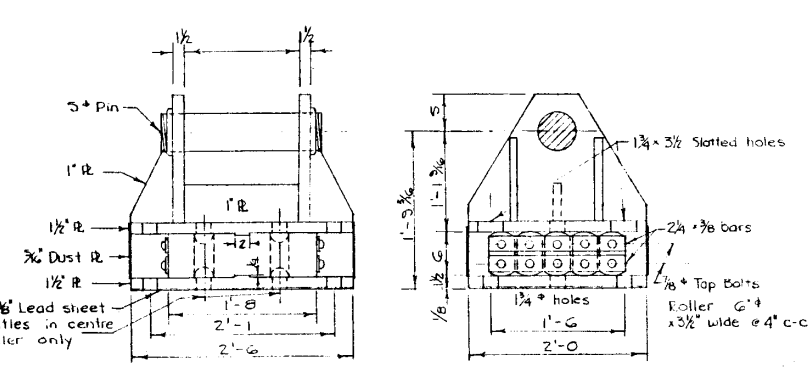
Jacking load	234
Moment	234 x 2.5 = 585
Sr = $\frac{585 \times 12}{27}$	260
Shear - Ar = $\frac{234}{27}$	14.2
11x1.5	As = 16.3
30W @ 108	Ss = 299.2

BEARING

G ^o Rollers - 358	93.5"
Big R - 358	Sq in min reqd

PIN BEARING

Bearing Ar = $\frac{358}{24}$	14.9
As = 15.0	
Shear - Ar = $\frac{358}{24}$	13.3
As = 13.5 x 2	
Bending - S	10.5
Ss = 12.3	



GENERAL NOTES

DEAD LOAD: Concrete 1600, Asphalt 350, Floor steel & fence 320, Truss & bracing 650, TOTAL 2920

LIVE LOAD: For Floor - 2 std H20 S16 Trucks, For truss - 240/lin ft of load lane combined with 18/1/2 lane for moment or 26/1/2 lane for shear, plus impact

SPECIFICATIONS: A.A.S.H.O 1953

RIVETS: 7/8" for main members, 3/4" for bracing

GUSSETS: 7/8" Thick minimum except 3/16" for bracing

PAINT: Paint all steelwork and shop coat red lead except where noted

CAMBER: For full dead load plus 1/2 live load without impact

ESTIMATE WEIGHT - (DOMINION BRIDGE) 294,850 lbs

SUPERSEDED

160' DECK TRUSS STRESSES, SECTIONS, DETAILS

GOVERNMENT OF THE PROVINCE OF ALBERTA
DEPARTMENT OF HIGHWAYS
BRIDGE BRANCH, EDMONTON

FILE NO. _____ HWY. NO. _____ DWG. NO. _____
LOCATION _____ SCALE _____ SHEET _____ OF _____
STREAM _____

OCT 1955 4 74452
DATE NO OF (PART) LOCATION

AUG 22/56 AS NOTED HAE
NO. DATE DESCRIPTION BY

DESIGNED BY: LRD
DATE: MAY 30 19 55
CHECKED BY: _____ DATE: _____

26'-5 1/2" Roadway Crown to Masonry

AT & U - RECORDS CENTRE