

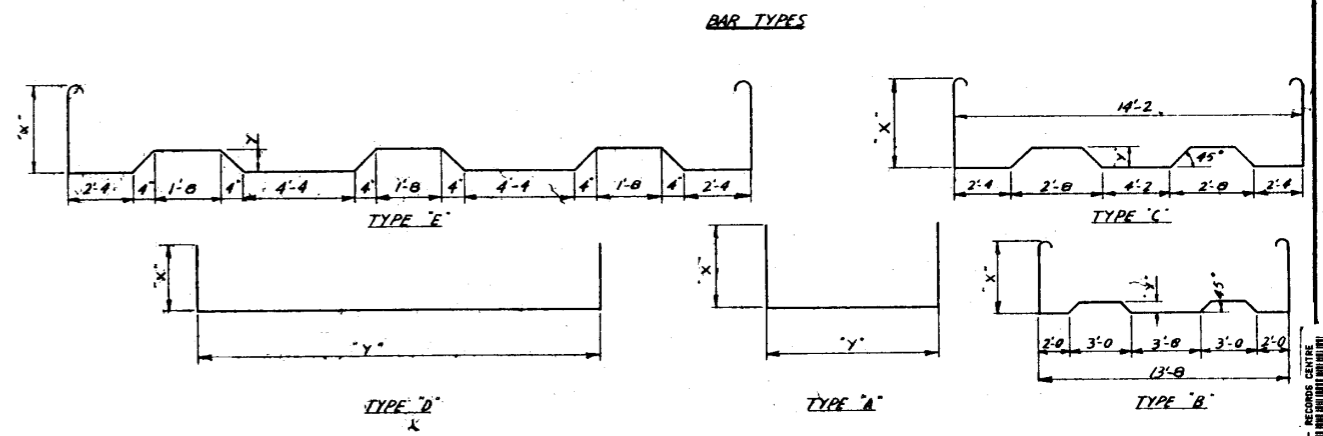
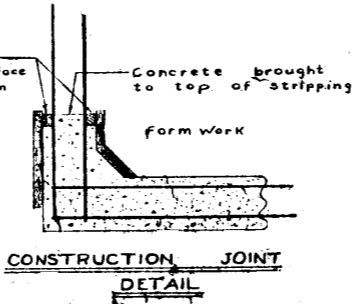
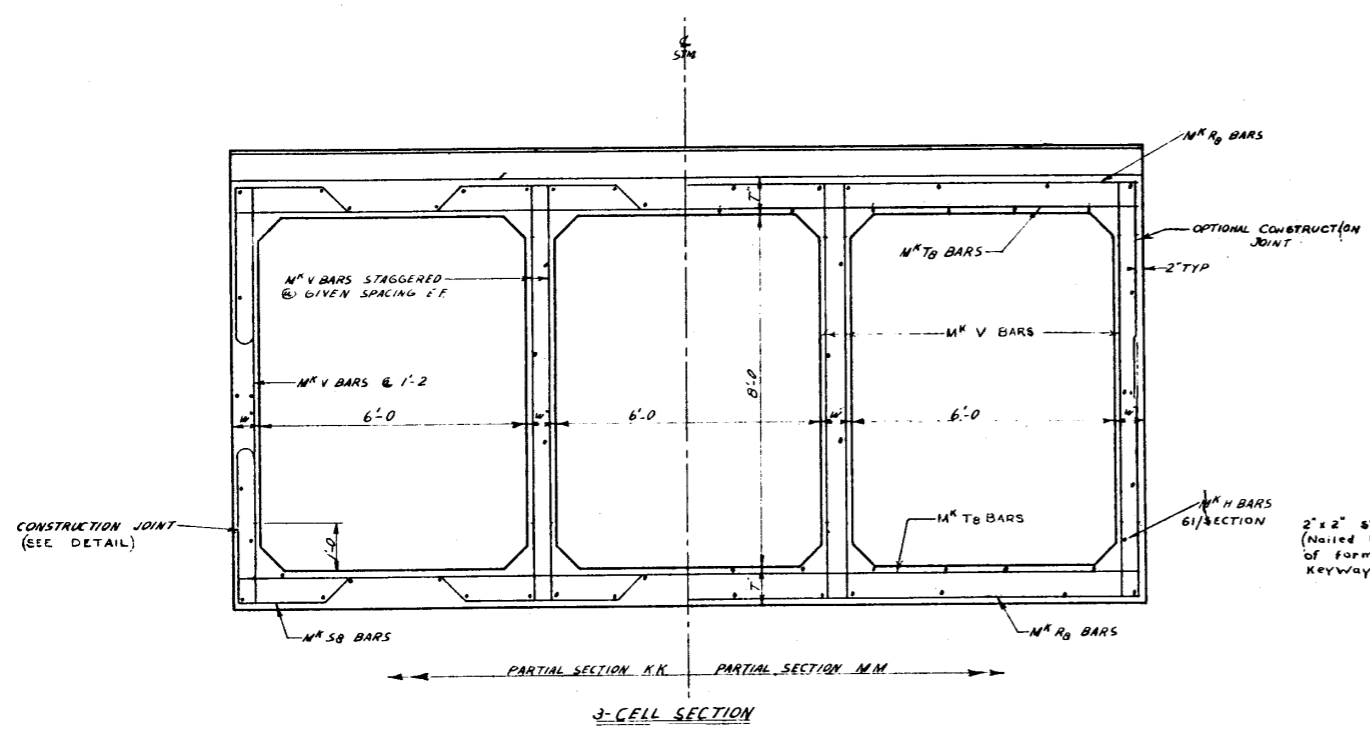
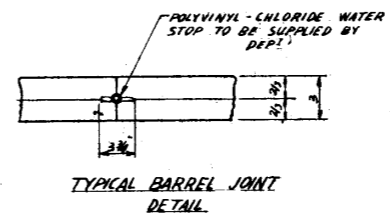
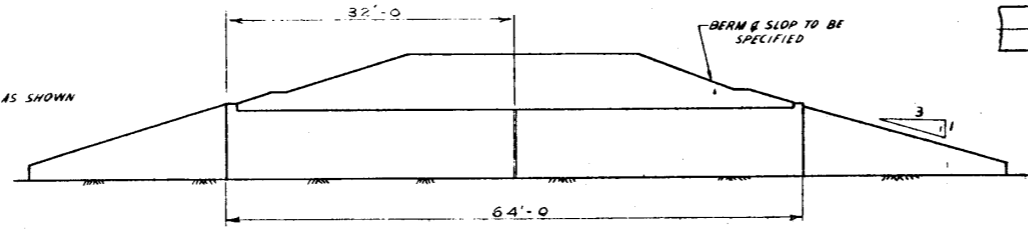
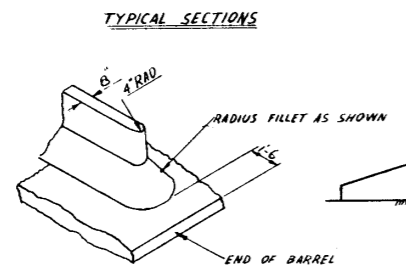
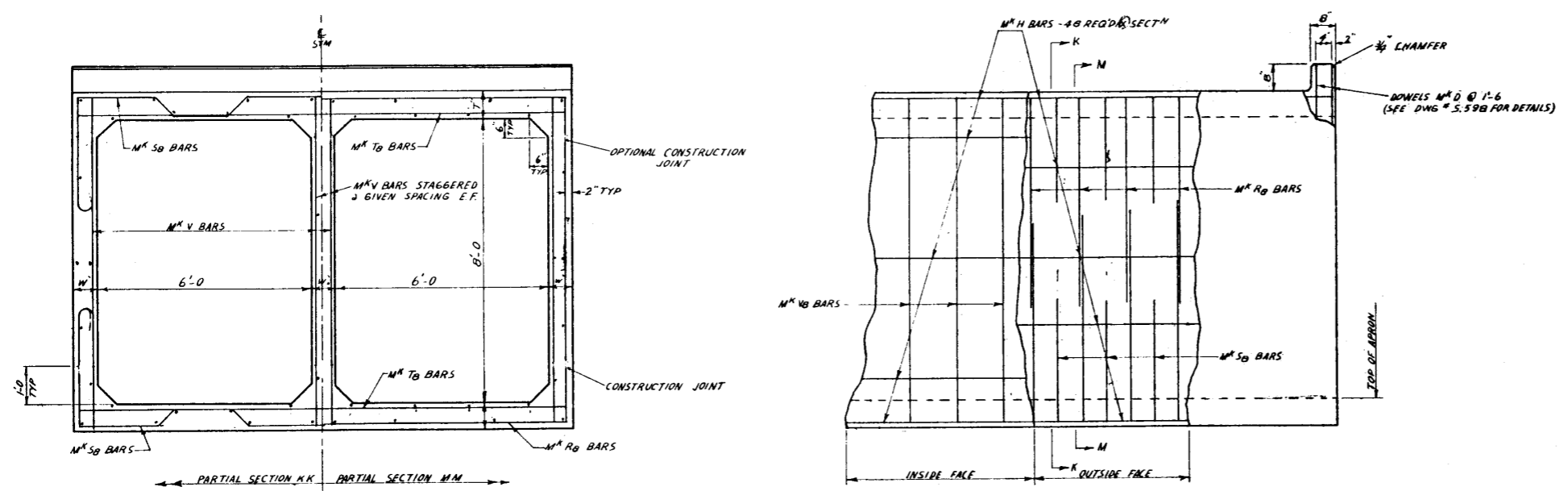
TWO CELL 6' x 8' CULVERTS

MARK	Nº REQD	SIZE	TYPE	DIM" X'	DIM" Y'	SPACING	LENGTH	WEIGHT
MAX COVER 5'-0" W=8'	R _B	5	A	5'-8"	13'-8"	1'-2"		
	S _B	5	B	3'-3"	5"	1'-2"		
	V _B	4	STR			1'-2"		
	H	4	STR			AS SHOWN		
	T _B	4	STR			4'-8"		
MAX COVER 25'-0" W=10'	R _B	6	A	5'-11"	14'-2"	1'-9"		
	S _B	6	C	3'-6"	8"	1'-6"		
	V _B	4	STR			1'-6"		
	H	4	STR			AS SHOWN		
	T _B	4	STR			5'-0" 3'-6"		

THREE CELL 6' x 8' CULVERTS

MARK	Nº REQD	SIZE	TYPE	DIM" X'	DIM" Y'	SPACING	LENGTH	WEIGHT
MAX COVER 10' T=8'	R _B	116	D	5'-8"	20'-5"	1'-2"	3'-9"	3840
	S _B	116	E	3'-2"	5"	1'-2"	28'-7"	3450
	V _B	348	STR			1'-2"	9'-0"	2090
	H	122	STR			AS SHOWN	31'-8"	2585
	T _B	32	STR			4'-8"	20'-5"	440

12,405 lbs.



- NOTES**
- 1 BAR DIMENSIONS OUT TO OUT
 - 2 FOR DETAILS OF APRONS & WING WALLS SEE DWG # S.598
 - 3 ALL HOOKED BARS TO BE SUPPLIED WITH "MINIMUM" HOOKS

NO.	DATE	DESCRIPTION	BY
1	JUNE 5/59	CONSTRUCTION JOINT DETAIL	APB

6' x 8' DOUBLE & TRIPLE CELL CULVERTS

GOVERNMENT OF THE PROVINCE OF ALBERTA
DEPARTMENT OF HIGHWAYS
BRIDGE BRANCH, EDMONTON

FILE NO. Z222-7-28 HWY. NO. 6A DWG. NO. 5.60B-243
 LOCALITY: SCALE: AS SHOWN
 STREAM: CREEK SHEET: 2 OF 3

DESIGNED BY: _____
 CHECKED BY: _____
 DATE: _____
 DATE: _____
 DATE: _____