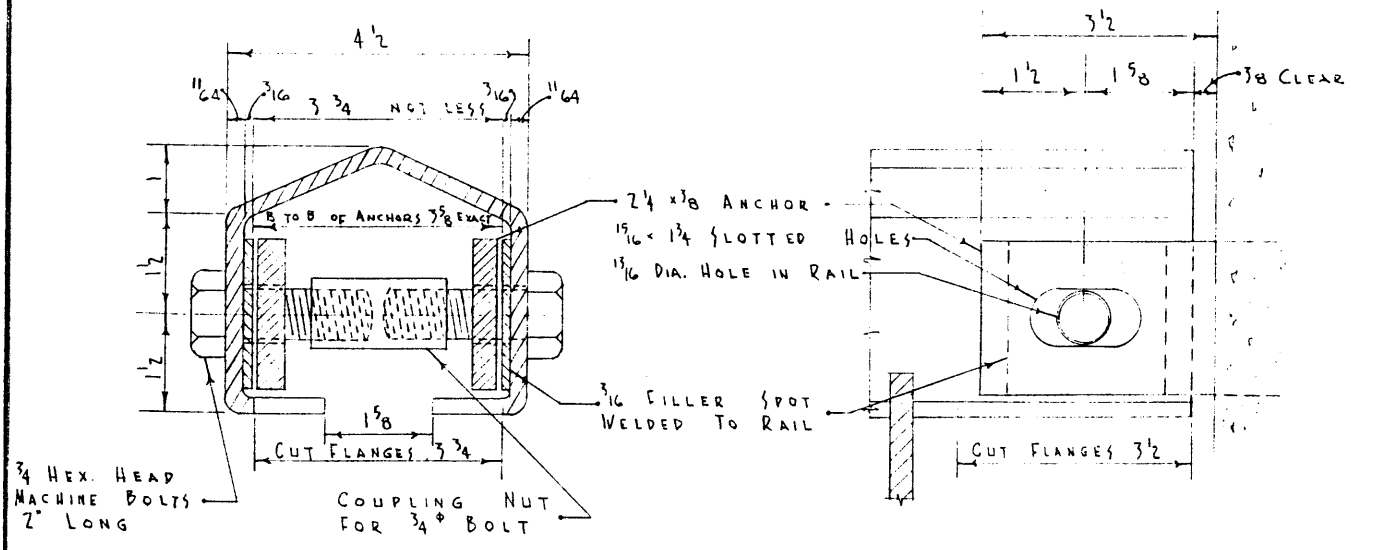


FOR DETAILS OF POSTS SEE BRIDGE DWG.
ELEVATION
 SCALE - 3/4" = 1'-0"

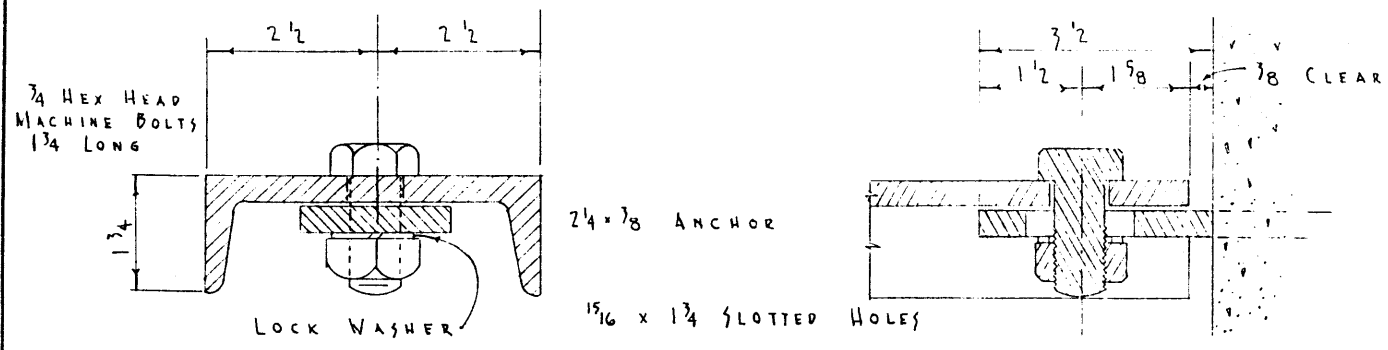
END ELEV. OF POST
 SHOWING DIMENSIONS FOR SETTING ANCHORS

SECTION X-X
 SCALE 1 1/2" = 1'-0"

SECTION Y-Y
 SCALE 1 1/2" = 1'-0"



DETAIL OF TOP RAIL CONNECTION
 HALF SIZE



DETAIL OF BOTTOM RAIL CONNECTION
 HALF SIZE

BILL OF MATERIAL	
NO.	DETAILS (N.T.S.)
132	ANCHORS "R" - 18 2 1/4 x 3/8
4	ANCHORS "S" - 18 2 1/4 x 3/8
4	ANCHORS "T" - 18 2 1/4 x 3/8
92	3/4 HEX. HEAD MACHINE BOLTS 1 3/4 LONG EACH WITH ONE SQUARE NUT & ONE LOCK WASHER
184	3/4 HEX. HEAD MACHINE BOLTS 2 LONG
52	COUPLING NUTS FOR 3/4 BOLTS

NOTE: SLOTTED HOLES IN ANCHORS MUST BE FINISHED SMOOTH AND TRUE

INTERMEDIATE TYPE
 HANDRAIL

FILE NO.

NOTE - ALL STEEL INCLUDING BOLT HEADS, NUTS, & ANCHORS TO BE GIVEN ONE SHOP COAT OF PAINT TO BE APPLIED AS PER SPECIFICATION

DEPARTMENT OF HIGHWAYS
 BRIDGE BRANCH
 JUNE 12, 1955
 CONTRACT NUMBER

DWG. NO.
 S-609