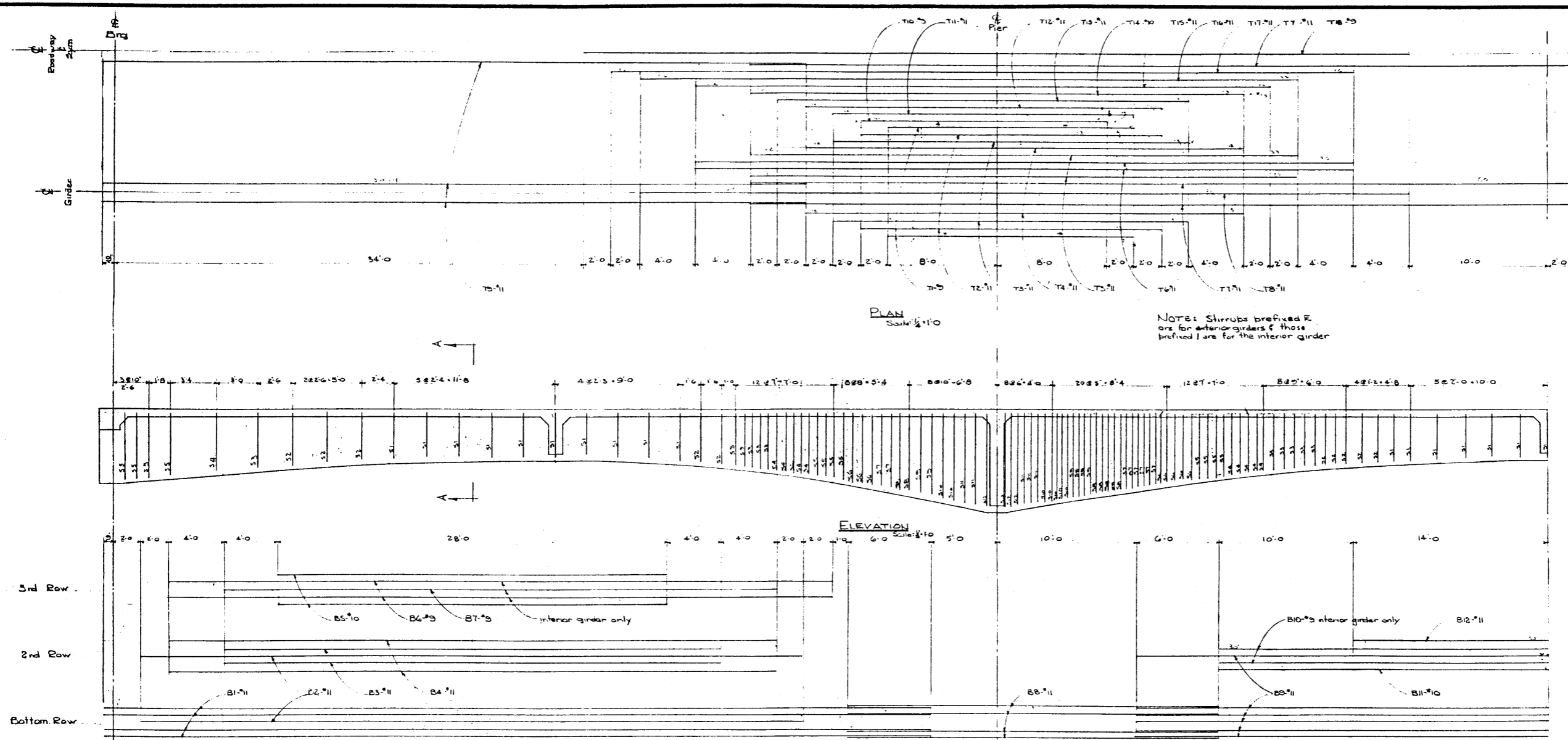
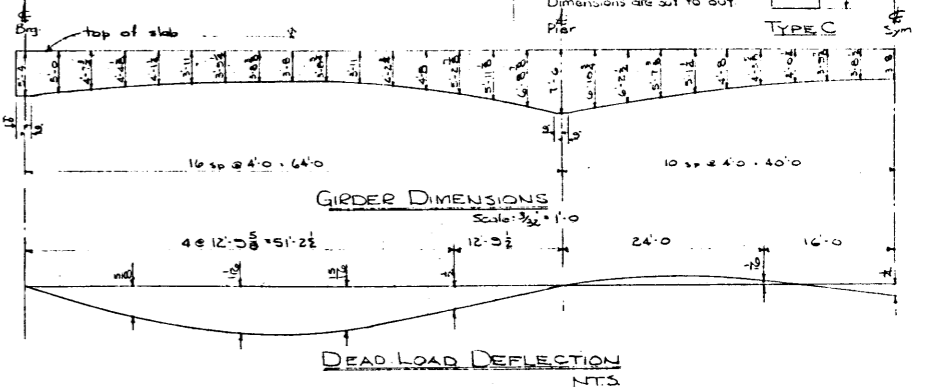
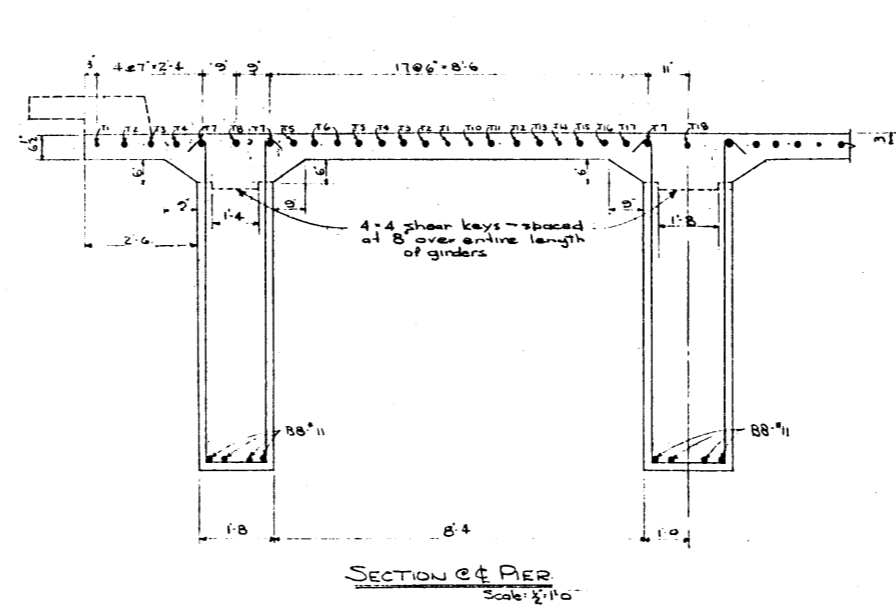
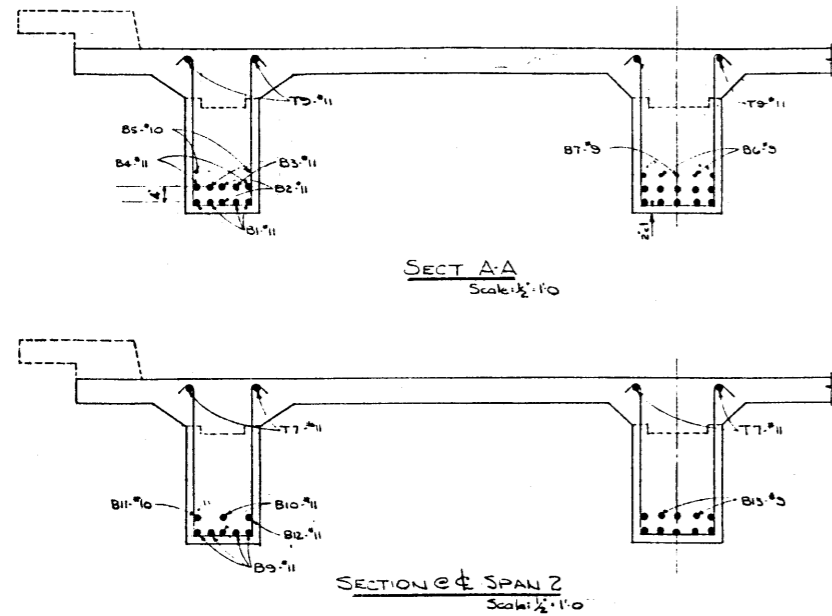
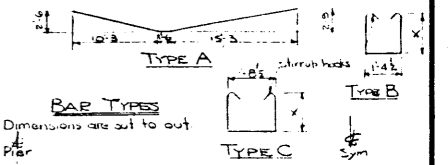


DESIGNED BY _____ DATE _____
 DETAILED BY R.L.E. DATE JULY 8 1955
 CHECKED BY _____ DATE _____



BAR LIST						
Nr	No	SIZE	TYPE	X	LENGTH	WEIGHT
T1	8	5	STR		18'-0"	420
T2	8	11			22'-0"	333
T3	8	11			26'-0"	1105
T4	8	11			32'-0"	1360
T5	8	11			40'-0"	1700
T6	8	11			48'-0"	2040
T7	12	11			60'-0"	3825
T8	4	11			56'-0"	1100
T9	12	11			50'-0"	3236
T10	4	9			18'-0"	245
T11	4	11			22'-0"	428
T12	4	11			26'-0"	553
T13	4	11			30'-0"	638
T14	4	10			36'-0"	620
T15	4	11			42'-0"	893
T16	4	11			48'-0"	1020
T17	4	11			54'-0"	1148
T18	2	9			60'-0"	428
B1	24	11			60'-0"	7651
B2	12	11			48'-0"	3060
B3	12	11			36'-0"	2295
B4	12	11			44'-0"	2805
B5	12	10			28'-0"	1446
B6	4	9			48'-0"	653
B7	2	9	STR		40'-0"	272
B8	24	11	A		27'-0"	3445
B9	18	11	STR		60'-0"	5738
B10	2	9			48'-0"	326
B11	3	10			48'-0"	420
B12	3	11			28'-0"	436
B13			STR			
E51	66	4	B	3'-4"	8'-10"	389
E52	40			3'-8"	9'-6"	251
E53	44			4'-0"	10'-2"	229
E54	44			4'-4"	10'-0"	318
E55	48			4'-8"	11'-4"	369
E56	32			5'-0"	12'-2"	260
E57	32			5'-4"	12'-0"	274
E58	28			5'-8"	13'-0"	253
E59	24			6'-0"	14'-2"	227
E510	28			6'-4"	14'-0"	277
E511	20			6'-8"	15'-8"	207
E512	16	B		7'-0"	16'-2"	173
I51	33	C		3'-4"	3'-2"	202
I52	20			3'-8"	3'-0"	131
I53	22			4'-0"	10'-6"	154
I54	22			4'-4"	11'-2"	164
I55	24			4'-8"	11'-0"	190
I56	16			5'-0"	12'-0"	134
I57	16			5'-4"	13'-2"	141
I58	14			5'-8"	13'-0"	125
I59	12			6'-0"	14'-0"	116
I510	14			6'-4"	15'-2"	142
I511	10			6'-8"	15'-0"	106
I512	8	C		7'-0"	16'-6"	88
Total						55,626



Complete Superstructure - Concrete Class B: 351 cu yd

STANDARD 64-80-64
CONCRETE GIRDER BRIDGE
GIRDER DETAILS

GOVERNMENT OF THE PROVINCE OF ALBERTA
 DEPARTMENT OF HIGHWAYS
 BRIDGE BRANCH, EDMONTON

FILE NO. _____ HWY. NO. _____ DWG. NO. 5610
 LOCATION _____ SCALE _____ SHEET 1 OF 2
 STREAM _____

NO.	DATE	DESCRIPTION	BY
1	June 18/56	Bar clearances added	RLF

117874