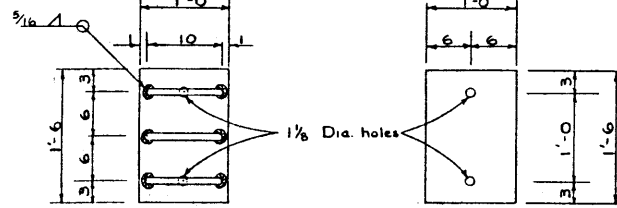
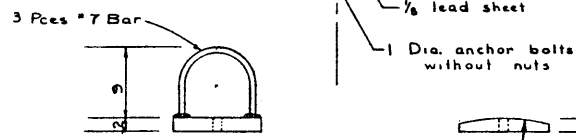
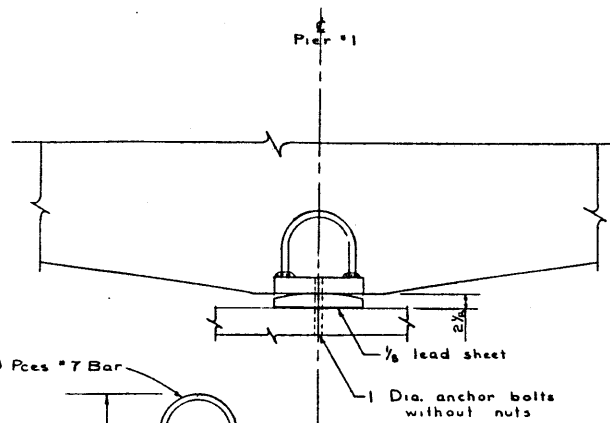


BED PLATE  
8 REQ'D

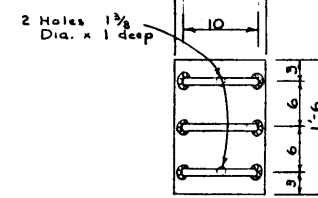
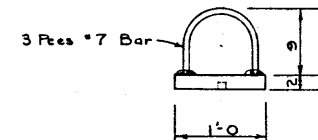
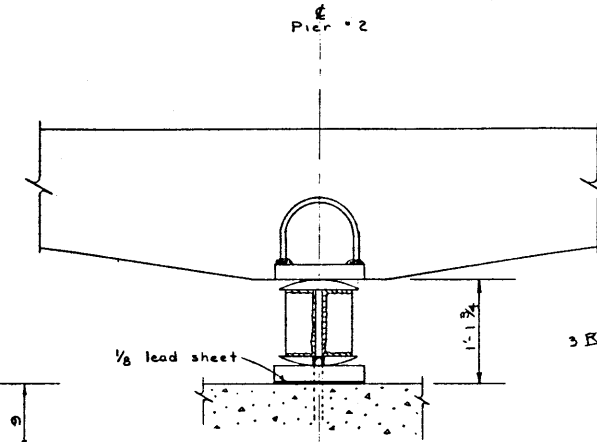
ABUTMENT BEARING DETAILS  
Scale 1" = 1'-0"



SOLE PLATE  
+ REQ'D

BED PLATE  
+ REQ'D

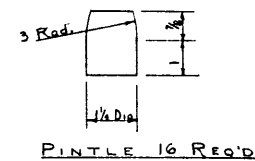
FIXED PIER BEARING DETAILS  
Scale 1" = 1'-0"



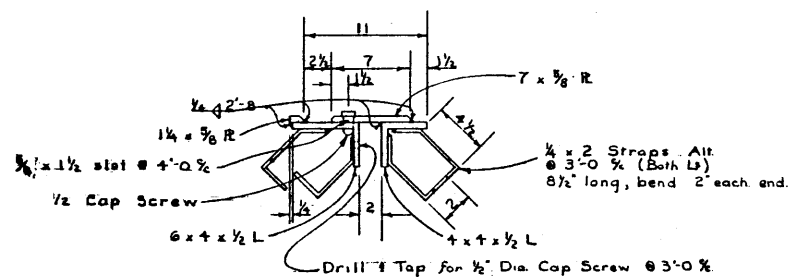
SOLE PLATE  
+ REQ'D

BED PLATE  
+ REQ'D

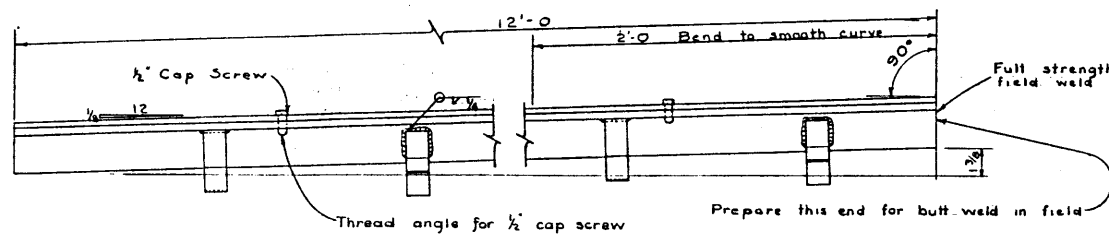
EXPANSION PIER BEARING DETAILS  
Scale 1" = 1'-0"



ROCKER  
+ REQ'D



SECTION



ELEVATION

EXPANSION PLATE  
Scale 1 1/2" = 1'-0  
2 Req'd as drawn - 2 Req'd opp. hand

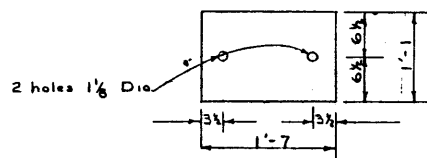
QUANTITY ESTIMATE

ITEM	QUANTITY	UNIT
Miscellaneous Iron	6673	Lbs

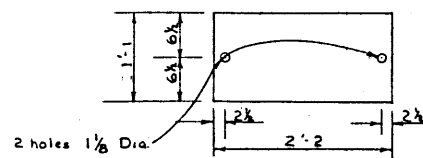
NOTE: All steelwork not in contact with concrete one coat red lead.

ANCHOR BOLTS

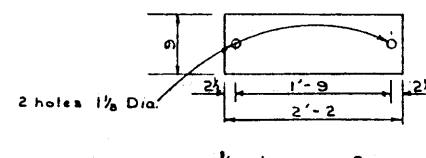
- 32 Req'd
- 32 1" Nuts Req'd
- 32 1" Lock Nuts Req'd



1/8 LEAD SHEET  
4 REQ'D



1/8 LEAD SHEET  
+ REQ'D



1/8 LEAD SHEET  
8 REQ'D

NO.	DATE	DESCRIPTION	BY
1			
2			
3			
4			

REVISIONS

STANDARD 42-60-42  
24'-0 RDWY  
CONCRETE GIRDER BRIDGE  
MISCELLANEOUS DETAILS

GOVERNMENT OF THE PROVINCE OF ALBERTA  
DEPARTMENT OF HIGHWAYS  
BRIDGE BRANCH, EDMONTON

FILE NO. \_\_\_\_\_ HWY. NO. \_\_\_\_\_ DWG. NO. S619  
LOCATION SCALE As Shown  
STREAM SHEET 3 OF 4

DESIGNED BY \_\_\_\_\_ DATE Jan 3 1936  
CHECKED BY \_\_\_\_\_  
S.S.W.

AS U.S. RECORD COPY