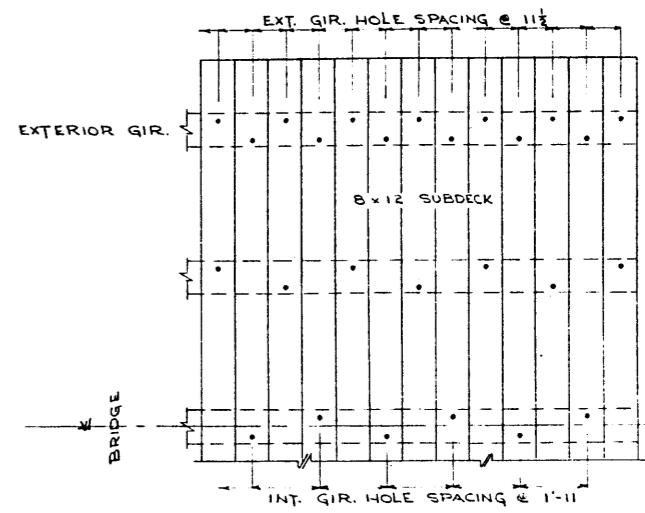
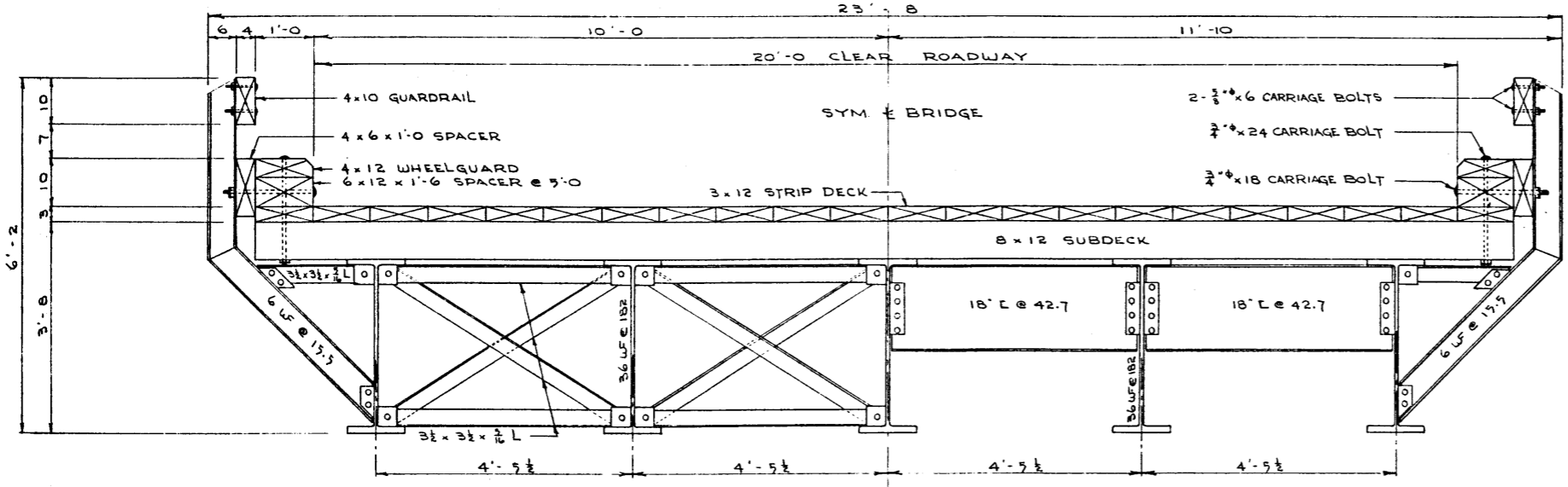


HALF ELEVATION
SCALE 1/2" = 1'-0"



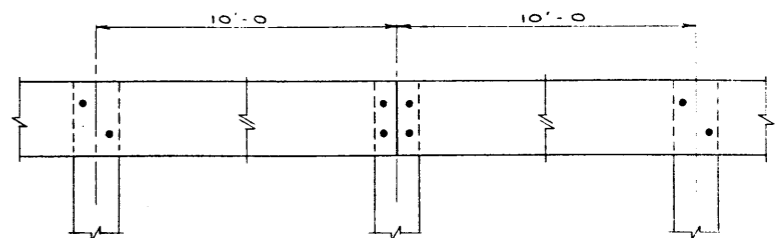
NOTE: EACH 8 x 12 SUBDECK BOLTED TO EXTERIOR GIRDERS. ALTERNATE 8 x 12 SUBDECK BOLTED TO INTERIOR GIRDERS. BOLTS FASTENING SUBDECK TO GIRDERS TO BE 3/4" x 10 CARRIAGE BOLTS.

SUBDECK DETAILS



HALF SECTION ~ INTERIOR SPAN HALF SECTION ~ END SPAN
SCALE 3/4" = 1'-0"

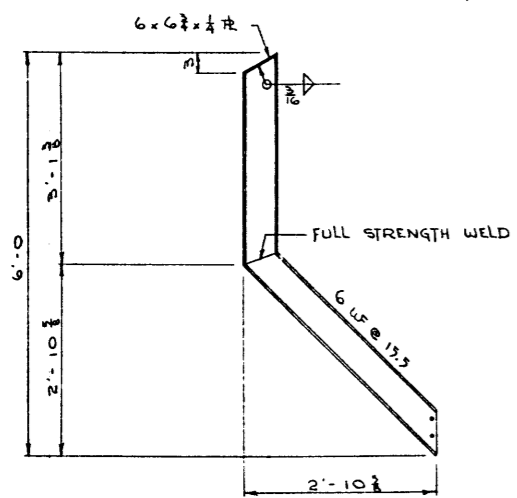
- DIAPHRAGM CLIP ANGLES AND POST CONNECTIONS TO BE SHOP RIVETED TO GIRDERS.
- DIAPHRAGMS AND POSTS TO BE FIELD BOLTED AND WELDED.
- INTERIOR DIAPHRAGMS TO BE AT 1/4 POINTS.



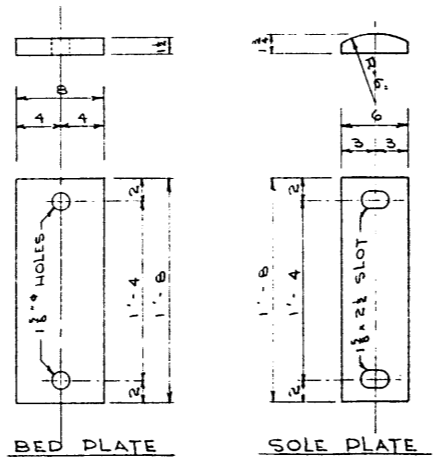
NOTE: GUARDRAIL TO BE SPLICED AT ALTERNATE POSTS. FOUR BOLTS TO BE USED AT SPLICE, TWO BOLTS TO BE USED AT INTERMEDIATE POSTS AS SHOWN.

GUARDRAIL SPLICE DETAILS
SCALE 1" = 1'-0"

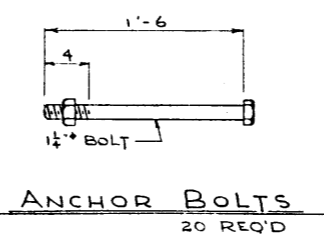
- NOTES:
- DESIGN LOADS - A.A.S.H.O. H20 S16 44 AND 6' CONCRETE DECK WITH 2" ASPHALT WEARING SURFACE.
 - ALL STEEL EXCEPT BEARING SURFACES IN CONTACT TO BE GIVEN ONE SHOP COAT OF RED LEAD PAINT.



POST DETAILS
16 REQ'D SCALE 3/4" = 1'-0"



BEARING PLATES
10 EA. REQ'D SCALE 1 1/2" = 1'-0"



ANCHOR BOLTS
20 REQ'D

DESIGNED BY: _____ DATE: _____
 CHECKED BY: _____ DATE: _____

NO.	DATE	DESCRIPTION	BY
4			
3			
2			
1			

STANDARD 70' GIRDER SPAN
TIMBER DECK
20'-0" ROADWAY

GOVERNMENT OF THE PROVINCE OF ALBERTA
DEPARTMENT OF HIGHWAYS
BRIDGE BRANCH, EDMONTON

FILE NO. _____ HWY. NO. _____ DWG. NO. S-627
 LOCATION _____ SCALE _____ SHEET _____ OF _____
 STREAM _____

AT & L U - RECORDS CENTRE
118292