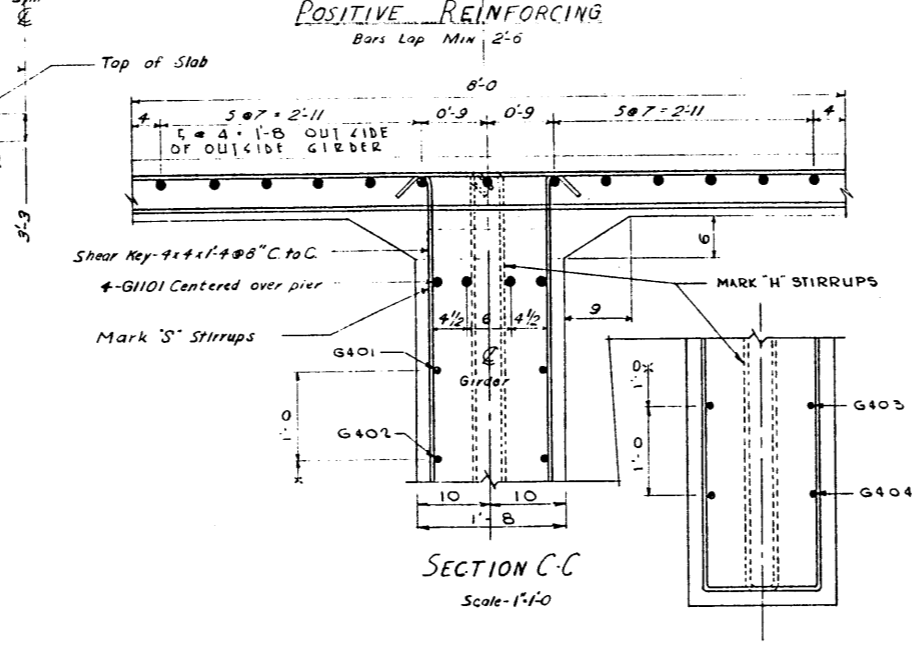
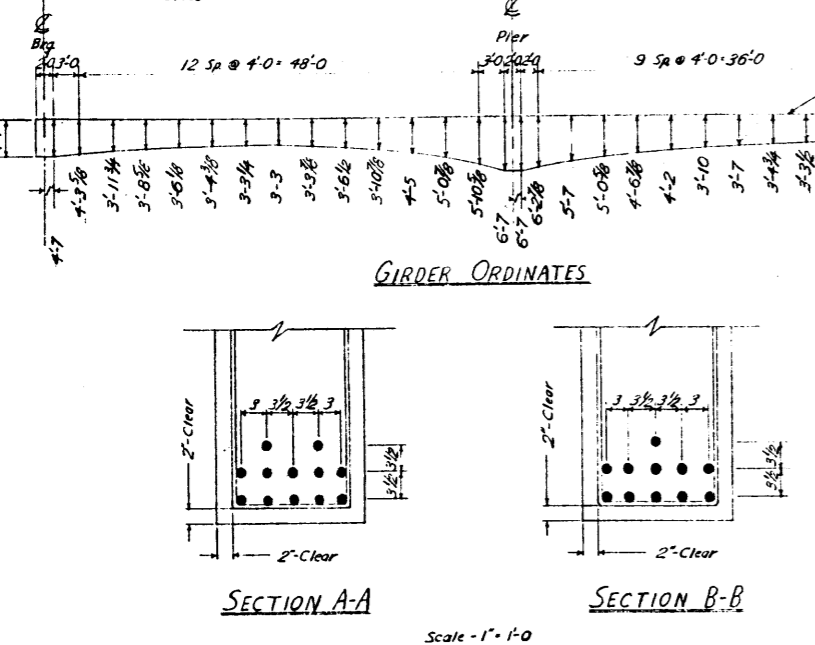
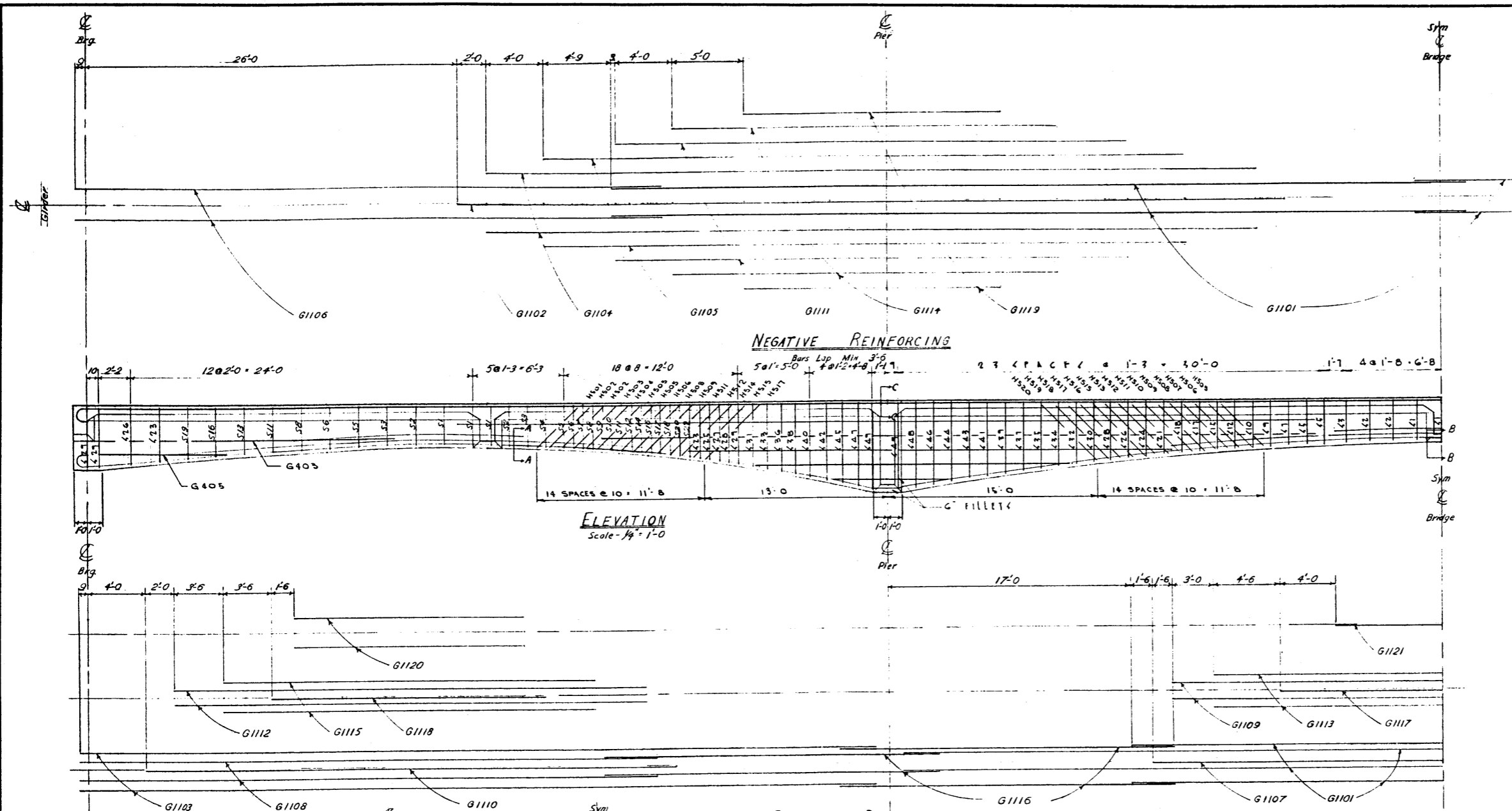


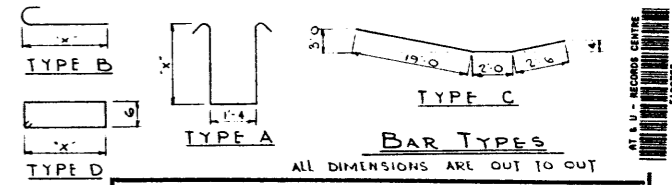
DESIGNED BY: M.D.C.
 DATE: APR 30 1957
 CHECKED BY: DATE:



MARK	SIZE	NUMBER	TYPE	"X"	LENGTH	WEIGHT
H501	5	8	D	4'-3"	10'-4"	87
H502	5	16	D	4'-4"	10'-6"	175
H503	5	8	D	4'-5"	10'-8"	89
H504	5	8	D	4'-6"	10'-10"	91
H505	5	24	D	4'-7"	11'-0"	275
H506	5	16	D	4'-8"	11'-2"	187
H507	5	8	D	4'-9"	11'-4"	95
H508	5	16	D	4'-10"	11'-6"	192
H509	5	16	D	4'-11"	11'-8"	195
H510	5	8	D	5'-0"	11'-10"	99
H511	5	16	D	5'-1"	12'-0"	200
H512	5	16	D	5'-2"	12'-2"	203
H513	5	8	D	5'-3"	12'-4"	103
H514	5	8	D	5'-4"	12'-6"	104
H515	5	16	D	5'-5"	12'-8"	212
H516	5	8	D	5'-6"	12'-10"	107
H517	5	16	D	5'-7"	13'-0"	217
H518	5	8	D	5'-9"	13'-4"	112
H519	5	8	D	5'-10"	13'-6"	113
H520	5	8	D	6'-0"	13'-10"	116
TOTAL						76,665

NO.	DATE	DESCRIPTION	BY
1	Aug 27/57	Added Top Steel & Dwg. Stirrups	SCW

MARK	SIZE	NUMBER	TYPE	"X"	LENGTH	WEIGHT
G401	4	16	STR		50'-0"	534
G402	4	16	STR		54'-0"	363
G403	4	32	STR		22'-0"	470
G404	4	16	STR		8'-0"	86
G405	4	16	STR		10'-0"	107
G1101	11	24	STR		60'-0"	20,402
G1102	8	8	STR		58'-0"	2,465
G1103	16	8	STR		57'-10"	4,315
G1104	16	8	STR		54'-0"	4,530
G1105	16	8	STR		45'-0"	3,825
G1106	16	8	STR		42'-7"	3,620
G1107	4	4	STR		42'-0"	893
G1108	16	8	STR		41'-4"	3,511
G1109	8	8	STR		38'-0"	1,616
G1110	8	8	STR		37'-0"	1,573
G1111	16	8	STR		36'-0"	3,050
G1112	16	8	STR		33'-0"	2,805
G1113	8	8	STR		32'-0"	1,360
G1114	16	8	STR		27'-0"	2,235
G1115	16	8	STR		26'-0"	2,210
G1116	32	2	C		23'-0"	3,995
G1117	4	4	STR		23'-0"	453
G1118	8	8	STR		19'-0"	808
G1119	16	8	STR		18'-0"	1,530
G1120	16	8	STR		16'-0"	1,360
G1121	11	4	STR		15'-0"	319
S1	4	36	A	2'-11"	7'-11"	211
S2	4	32	A	2'-11 1/2"	8'-0"	171
S3	4	24	A	3'-0"	8'-1"	130
S4	4	8	A	3'-0 1/2"	8'-2"	436
S5	4	8	A	3'-1"	8'-3"	176
S6	4	16	A	3'-1 1/2"	8'-4"	87
S7	4	16	A	3'-2"	8'-5"	10
S8	4	16	A	3'-2 1/2"	8'-6"	91
S9	4	16	A	3'-3"	8'-7"	92
S10	4	16	A	3'-3 1/2"	8'-8"	93
S11	4	16	A	3'-4"	8'-9"	94
S12	4	16	A	3'-4 1/2"	8'-10"	94
S13	4	8	A	3'-5"	8'-11"	48
S14	4	8	A	3'-5 1/2"	9'-0"	48
S15	4	8	A	3'-6"	9'-1"	49
S16	4	16	A	3'-6 1/2"	9'-2"	98
S17	4	16	A	3'-7"	9'-3"	97
S18	4	16	A	3'-8"	9'-5"	101
S19	4	8	A	3'-8 1/2"	9'-6"	51
S20	4	8	A	3'-9"	9'-7"	51
S21	4	8	A	3'-9 1/2"	9'-8"	52
S22	4	8	A	3'-10"	9'-9"	52
S23	4	16	A	3'-10 1/2"	9'-10"	105
S24	4	8	A	3'-11"	9'-11"	53
S25	4	8	A	4'-0"	10'-1"	54
S26	4	16	A	4'-0 1/2"	10'-2"	107
S27	4	8	A	4'-1"	10'-3"	55
S28	4	16	A	4'-2"	10'-5"	111
S29	4	24	A	4'-3"	10'-7"	170
S30	4	8	A	4'-3 1/2"	10'-8"	57
S31	4	8	A	4'-5"	10'-11"	58
S32	4	8	A	4'-5 1/2"	11'-0"	57
S33	4	8	A	4'-7"	11'-3"	60
S34	4	8	A	4'-7 1/2"	11'-4"	61
S35	4	8	A	4'-9"	11'-7"	62
S36	4	8	A	4'-9 1/2"	11'-8"	62
S37	4	8	A	4'-11"	11'-11"	64
S38	4	8	A	5'-0"	12'-1"	65
S39	4	8	A	5'-1"	12'-3"	65
S40	4	8	A	5'-2"	12'-6"	67
S41	4	8	A	5'-3 1/2"	12'-8"	68
S42	4	8	A	5'-5 1/2"	13'-0"	69
S43	4	8	A	5'-6"	13'-1"	70
S44	4	8	A	5'-8"	13'-5"	72
S45	4	8	A	5'-8 1/2"	13'-6"	72
S46	4	8	A	5'-10 1/2"	13'-10"	74
S47	4	8	A	5'-11"	14'-0"	75
S48	4	8	A	6'-1"	14'-1"	76
S49	4	16	A	6'-3"	14'-7"	156



STANDARD 56-18-56
CONCRETE GIRDER
26' ROADWAY
GIRDER DETAILS

GOVERNMENT OF THE PROVINCE OF ALBERTA
 DEPARTMENT OF HIGHWAYS
 BRIDGE BRANCH, EDMONTON

FILE NO. _____ HWY. NO. _____ DWG. NO. 5630
 LOCATION _____ SCALE _____ SHEET _____ OF _____
 STREAM _____