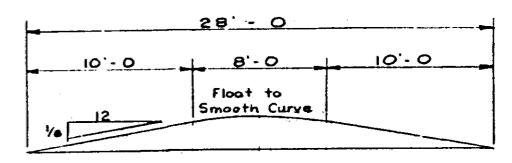
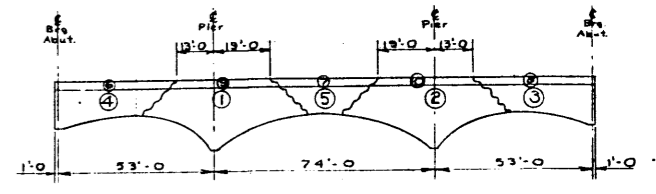


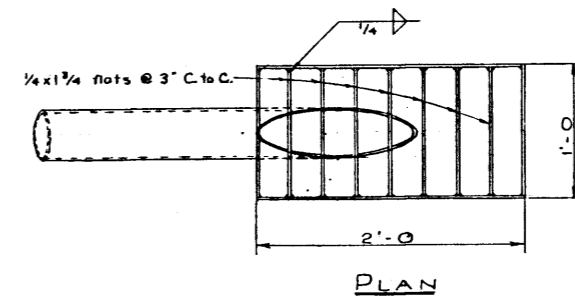
HANDRAIL DETAILS
Scale - 1/4" = 1'-0"



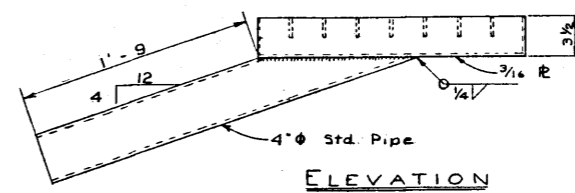
CROWN DIAGRAM



POUR DIAGRAM
(If Req'd)



PLAN

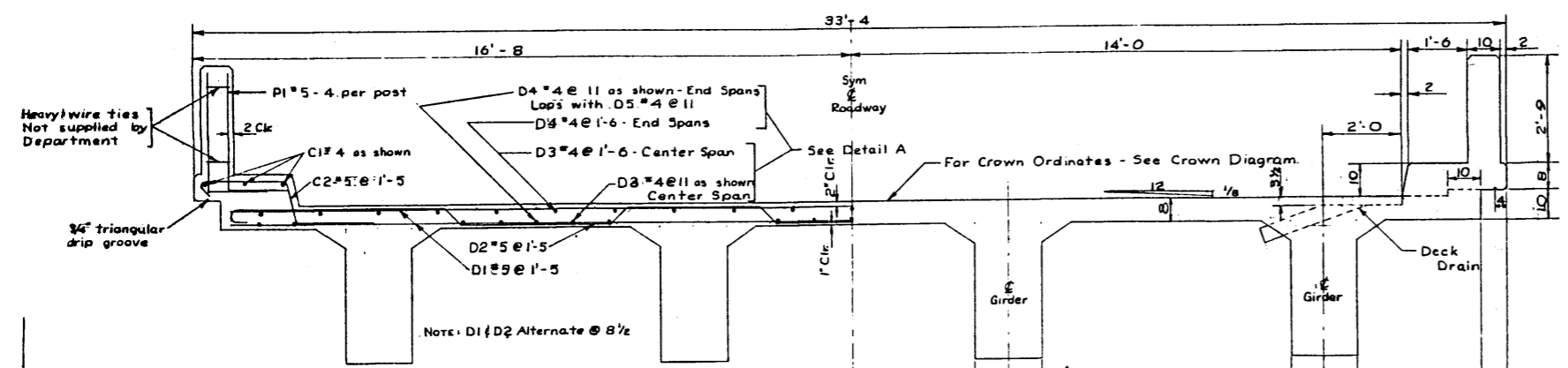


ELEVATION

DECK DRAIN DETAIL
Scale 1 1/2" = 1'-0" 2 Req'd

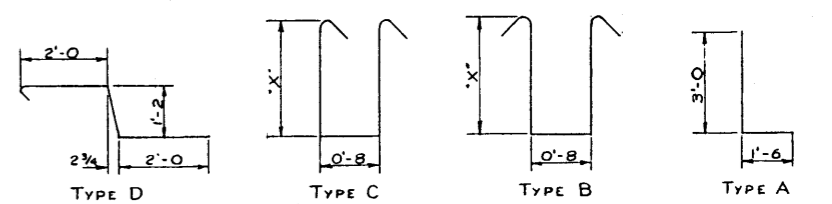
BAR LIST

MARK	SIZE	No.	TYPE	X	LENGTH	WEIGHT
PI	5	128	A		4'-6"	601
D1	5	258	Str.		31'-6"	8476
D2	5	128	E		33'-8"	4495
D3	4	80	Str.		31'-0"	1656
D4	4	122	Str.		25'-0"	2037
C1	4	30	Str.		37'-0"	741
C2	5	250	D		5'-7 1/2"	1467
DM1	4	48	Str.		25'-4"	812
DM2	4	42	B	5'-5"	12'-3"	346
DM3	4	42	C	1'-9"	4'-11"	138
DM4	4	63	B	2'-3"	5'-11"	249
D5	4	38	Str.		40'-0"	1585
Total						22,631

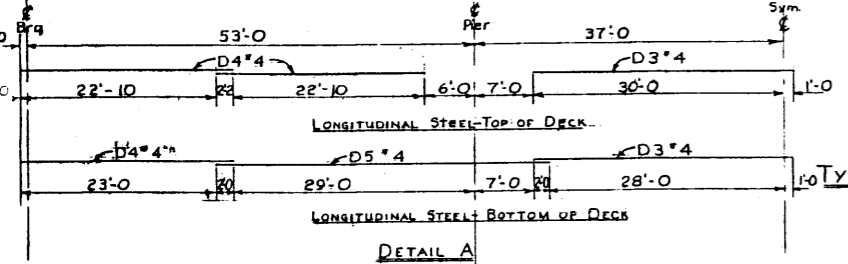


TYPICAL DECK SECTION
Scale - 1/2" = 1'-0"

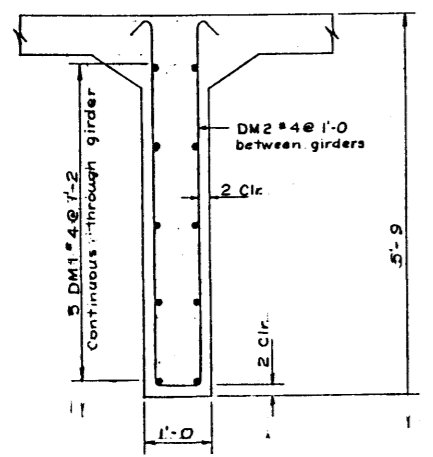
BAR TYPES



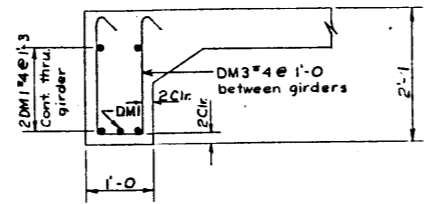
All bar dimensions Out to Out



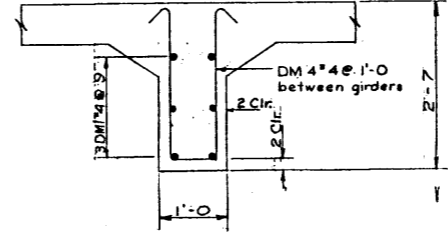
DETAIL A



AT PIER



AT ABUTMENT



AT C OF SPAN

TYPICAL DIAPHRAGM SECTIONS
Scale 3/4" = 1'-0"

QUANTITY ESTIMATE

ITEM	QUANTITY	UNIT
Concrete-Class B	167	Cu. Yds.
Reinforcing Steel	22,631	Lbs
Steel Handrail	34	Panel
Miscellaneous Iron	128	Lbs.

NO.	DATE	DESCRIPTION	BY
4			
3			
2			
1			

REVISIONS

STANDARD 53-74-53 F-28' ROADWAY
CONCRETE GIRDER BRIDGE

SLAB DETAILS

GOVERNMENT OF THE PROVINCE OF ALBERTA
DEPARTMENT OF HIGHWAYS
BRIDGE BRANCH, EDMONTON

FILE NO. _____ HWY. NO. _____ DWG. NO. 5655
LOCATION _____ SCALE As Shown
STREAM _____ SHEET _____ OF _____

DESIGNED BY: E.R.C.
DATE: MAR 27 1956
CHECKED BY: _____

NOTE:
- Class 2 finish on both faces of curbs, all faces of posts & outside edge of slab.
- Diaphragms to be poured with adjoining girders.
- Strike girder falsework before pouring curbs.