

STRESS DIAGRAM

DESIG. DATA

HEAD LOAD
 DECK: 5" CONCRETE + 2" ASPHALT
 FLOOR STEEL & HANDRAIL TRUSS

LIVE LOAD
 FOR FLOOR - H20 - 316 TRUCKS
 FOR TRUSS - H20 - 316 TRUCKS

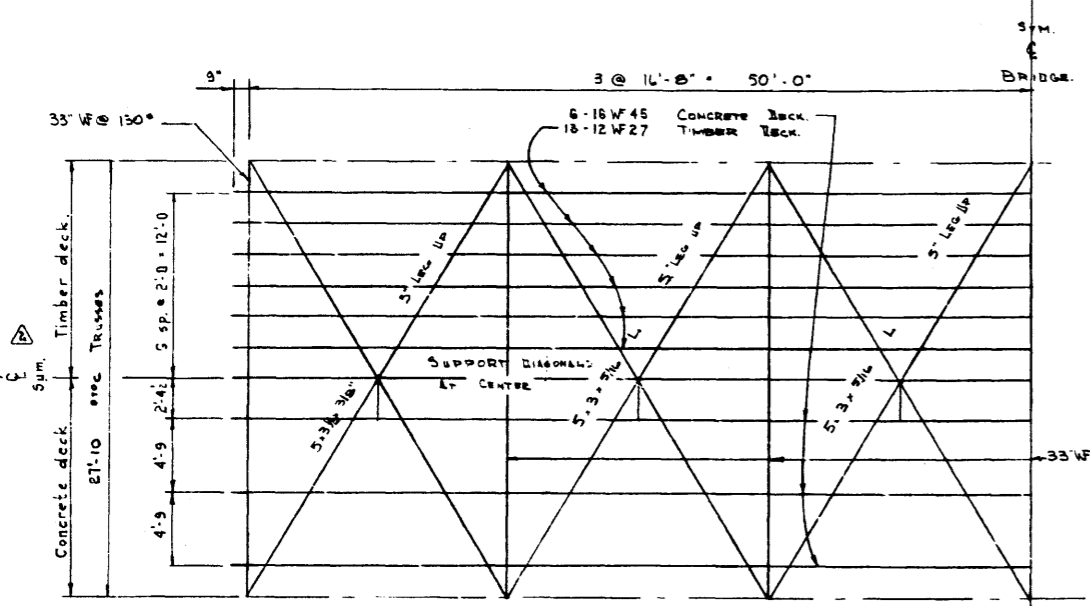
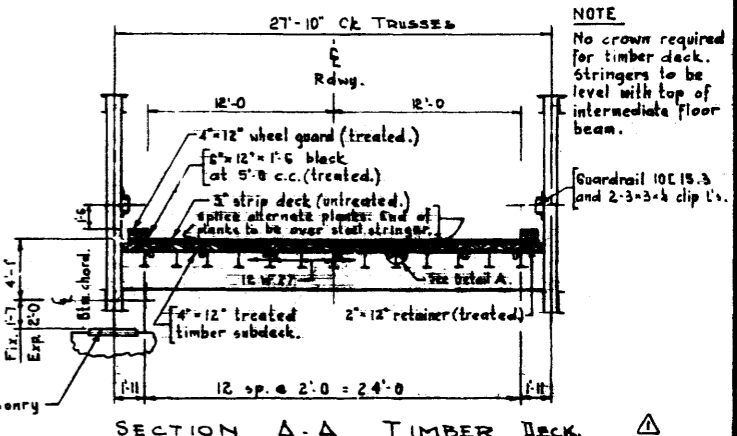
WIND LOAD
 TOP CHORD 300 k/ft
 300 k/ft OR 200 k/ft APPLIED 6'0" ABOVE ROADWAY

IMPACT
 REFER TO ASD:10. FOR TRUSS 300% TO LIVE LOAD ONLY FOR FLOOR.

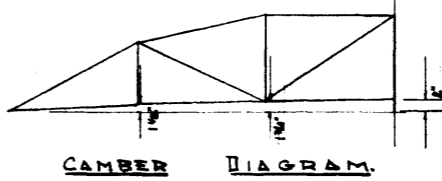
SPECIFICATIONS
 A.A.S.H.O. - 1953 EXCEPT AS NOTED.

UNIT STRESSES
 TENSION 18,000 k/ft²
 COMPRESSION 15,000 - 1/4 (k) k/ft²
 UNIT STRESSES INCREASES 25% FOR D.L., LL, WIND & IMPACT.
 SHEAR ON WEBS 1,000 k/ft²
 SHEAR ON RIVETS 13,500 k/ft²
 BEARING ON RIVETS 27,000 k/ft²

GENERAL
 GUSSET PLATES - 1/2" MIN. THICKNESS.
 RIVETS - 1/2" φ
 BEARINGS TO HAVE BOMS IN TO PROVIDE FOR DEFLECTION.



See dwg. No. 6658 for General Notes.



| STRINGERS | | INTERMEDIATE FLOOR BEAM | | END FLOOR BEAM | |
|----------------------|---|-------------------------|--|----------------|---|
| CONCRETE DECK | | TIMBER DECK | | SHEAR | |
| SHEAR | D.L. 3.84 LL 21.3 I 6.4 TOTAL 31.5 @ 5640 lbs | SHEAR | D.L. 0.5 LL 8.8 I 2.6 TOTAL 11.9 @ 4160 lbs | SHEAR | D.L. 25.04 LL 41.09 I 12.33 TOTAL 78.5 @ 3492 lbs |
| MOMENT | D.L. 16.0 LL 63.3 I 19.0 TOTAL 98.3 @ 181/2 - 655" | MOMENT | D.L. 2.1 LL 35.4 I 10.6 TOTAL 48.1 @ 11/2 - 28.9" | MOMENT | D.L. 174.8 LL 344.0 I 103.2 TOTAL 622.0 @ 141/2 - 415.0" |
| | L' WF @ 45 - S. 124" | | 12 WF 27 S. 34.1 | | 33 WF @ 141 S. 446 B" |

JACKING LOADS

SHEAR - 94.5 @ 4920 lbs
 MOMENT - 265.5 @ 16121 - 12620"

33 WF @ 130 - S. 104.8"
 WITH STIFFENERS & BEARING R AT JACKING POINTS

DETAIL A Scale: 1/4" = 1'-0"

STD. 100 FT. PONY TRUSS
 24' ROADWAY
 STRESS SHEET.

| REVISIONS | | | |
|-----------|------------|----------------------|--------|
| 4 | | | |
| 3 | Oct 16 69 | Bearing & Paint Note | T.R. |
| 2 | Mar. 7 68 | Stringer spacing | R.E.A. |
| 1 | Feb. 25 68 | Timber deck | R.E.A. |
| NO. | DATE | DESCRIPTION | BY |

GOVERNMENT OF THE PROVINCE OF ALBERTA
 DEPARTMENT OF HIGHWAYS
 BRIDGE BRANCH, EDMONTON

FILE NO. _____ HWY. NO. _____ DRAWING NO. _____
 LOCATION _____ SCALE 3/16" = 1'-0" SHEET 1 OF 2
 9657

DESIGNED BY: R. E. B.
 CHECKED BY: _____
 DATE: FEB. 10 1968