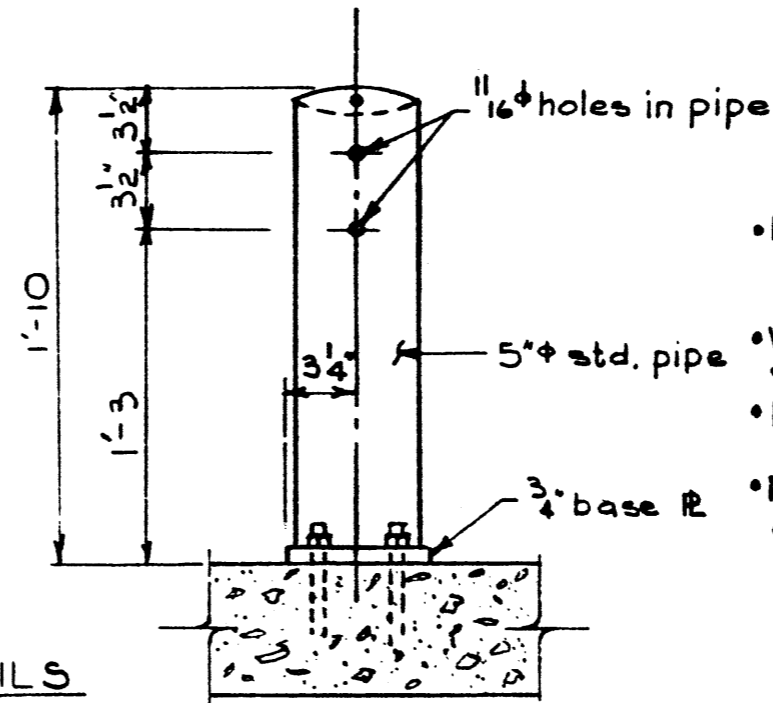
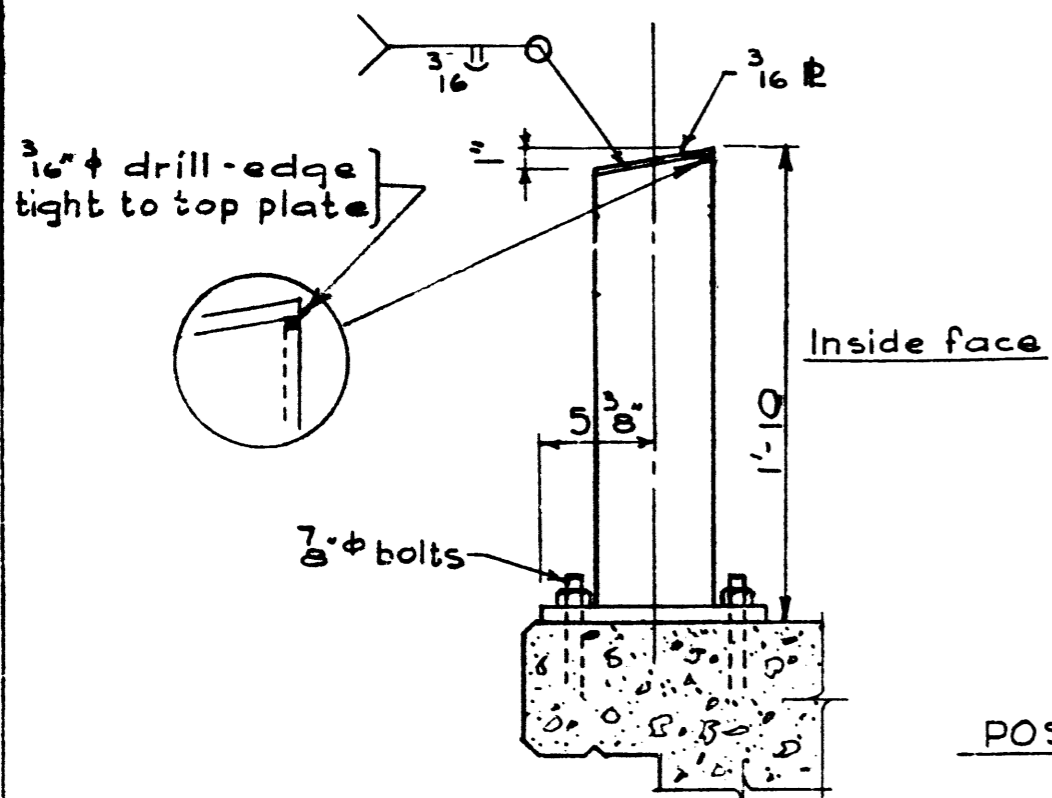
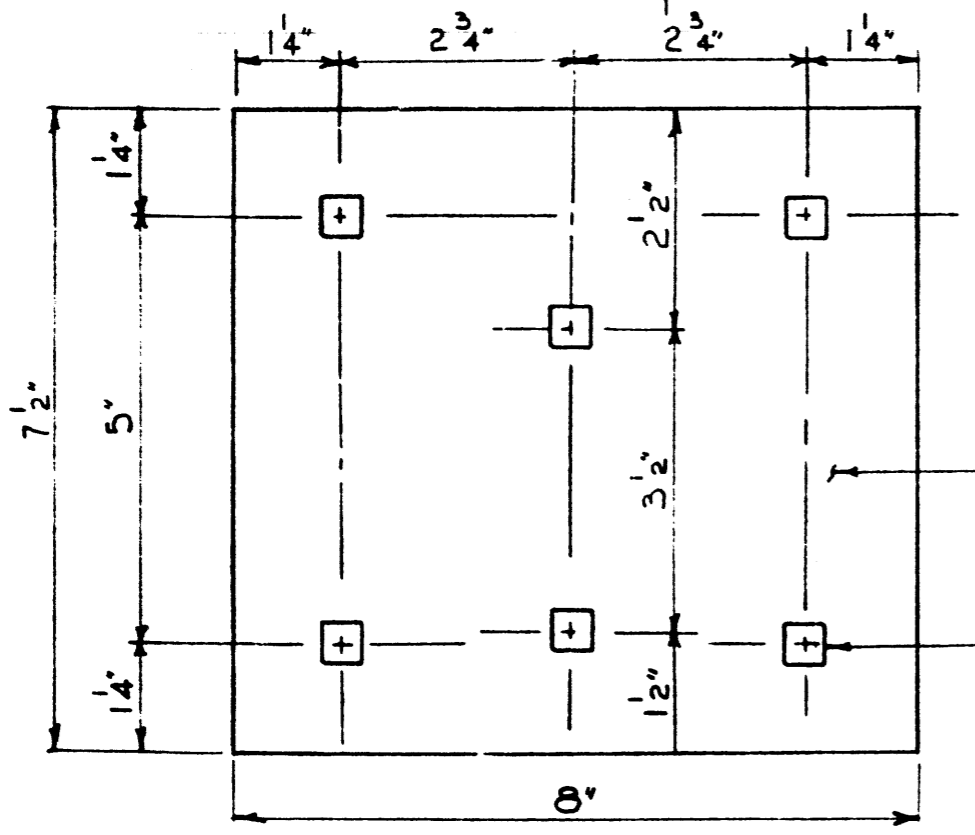


Revisions		
1	2/1/67 Redrawn	D.A.
2		
3		



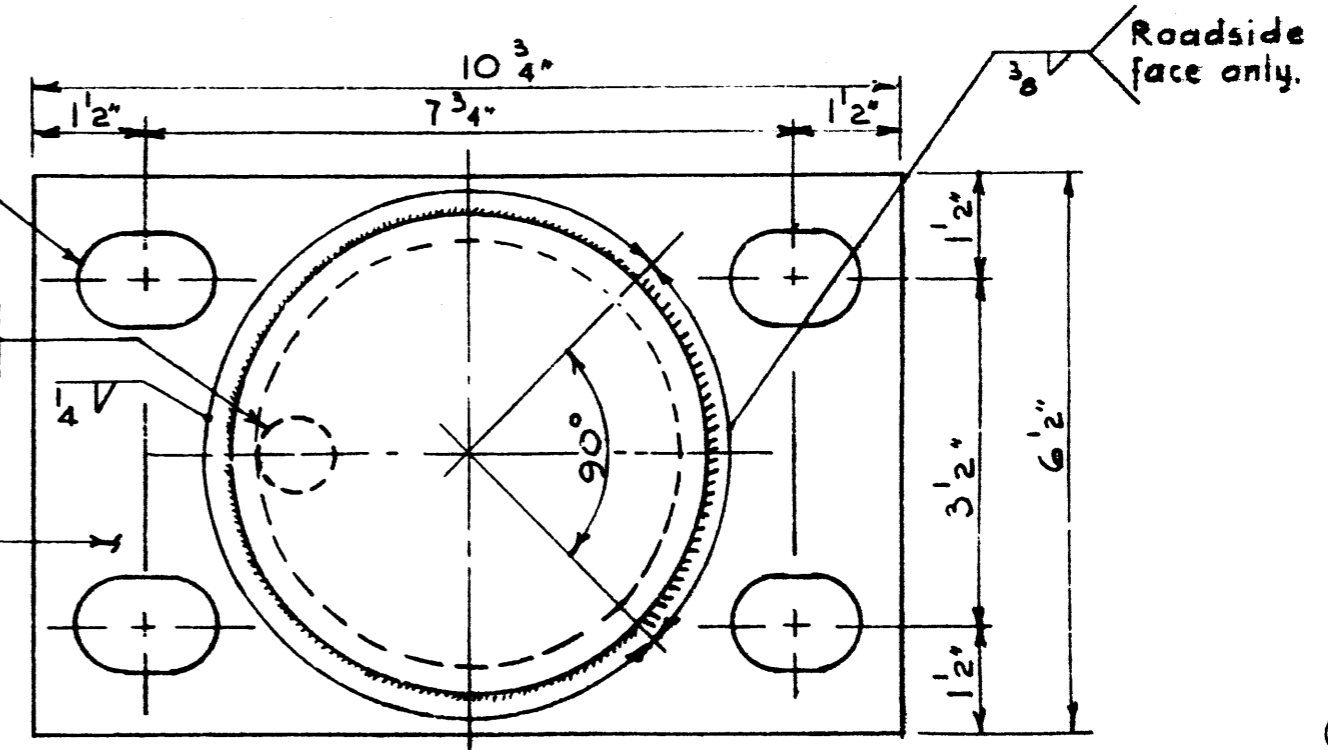
- Each post assembly to be hot-dip galvanized after fabrication in accordance with A.S.T.M. Spec. A123.
- Welding is to conform to the current A.W.S. Specification.
- Plate is to conform to the requirements of the A.S.T.M. Specification A36.
- Pipe is to conform to the requirements of A.S.T.M. Specification A53-Grade B.

POST DETAILS  
N.T.S.



SPLICE PLATE  
N.T.S.  
(For  $3 \times 8$ " timber rail only)

slotted holes  
 $1\frac{1}{8} \times 1\frac{5}{8}$ "  
 $1\phi$  hole - edge tight to pipe wall



BASE PLATE  
N.T.S.

APPROVED \_\_\_\_\_ CHIEF BRIDGE ENGINEER

Total wt. - 42#/post

STANDARD PIPE GUARD  
POST DETAILS

D.A. Nov. 29/67 5-659-69