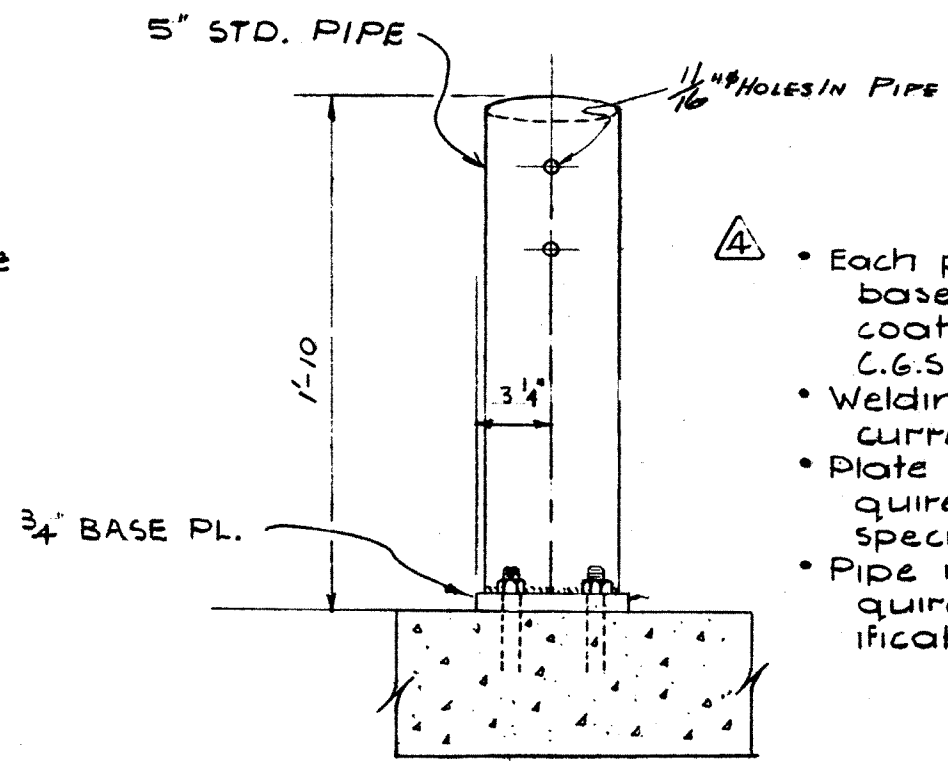
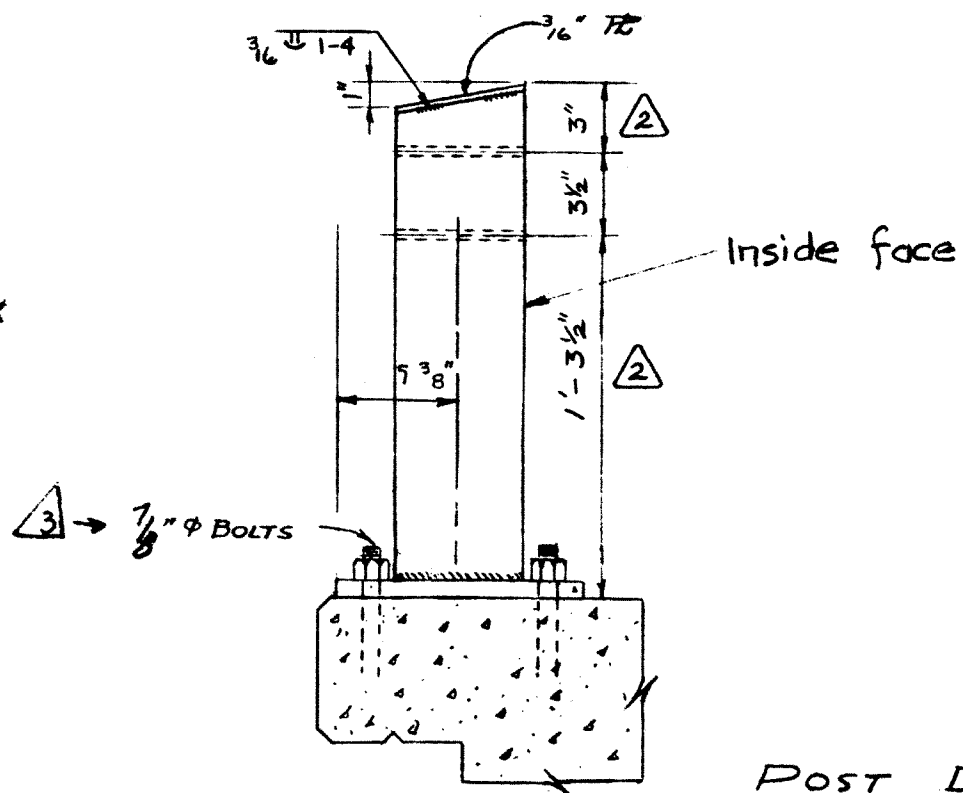


Revisions			
1	24/6/59	Weld size	HHH
2	6 Nov. '59	Holes lowered 1/2", Note.	I.L.W.
3	6/2/61	Base Plate Holes	L.F.D.
4	11/6/63	Notes	B.St.

REDRAWN
APRIL 29/64

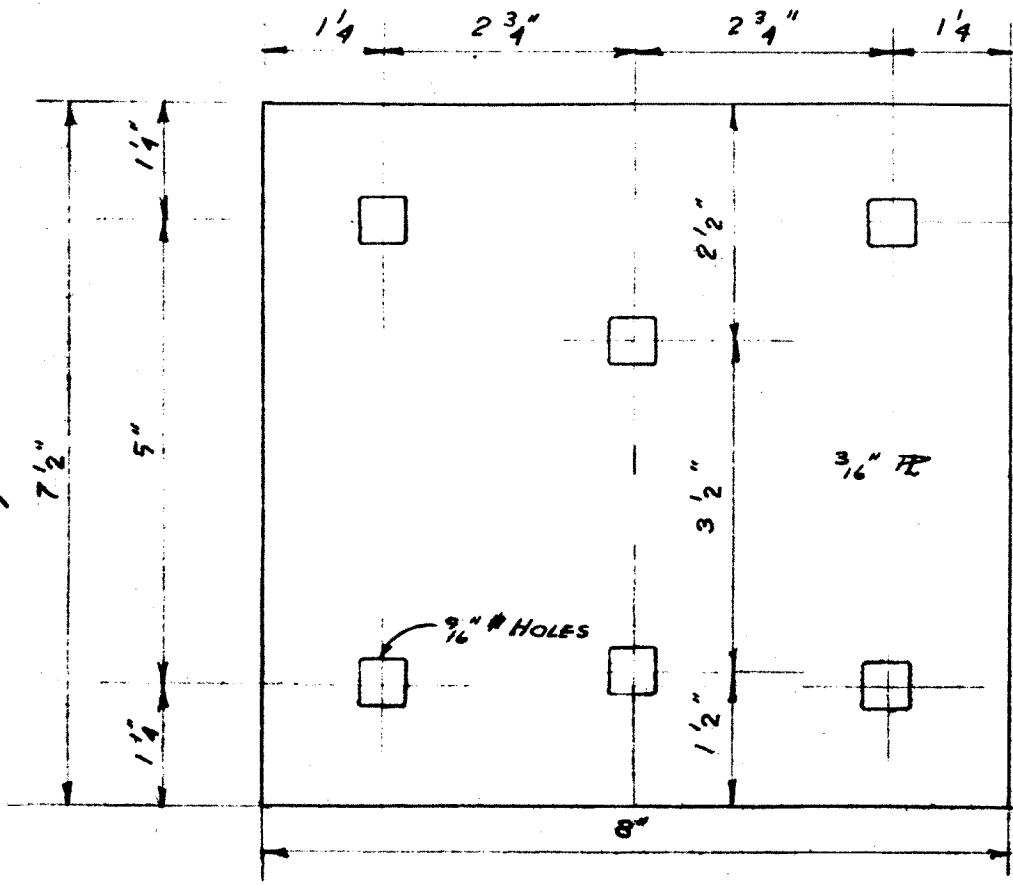


- △ 4
- Each post, including bottom of base pl., to receive one shop coat of paint conforming to the C.G.S.B. Spec. 1-GP-140A.
 - Welding is to conform to the current A.W.S. Specification.
 - Plate is to conform to the requirements of the A.S.T.M. specification A36.
 - Pipe is to conform to the requirements of A.S.T.M. specification A53-Grade B.

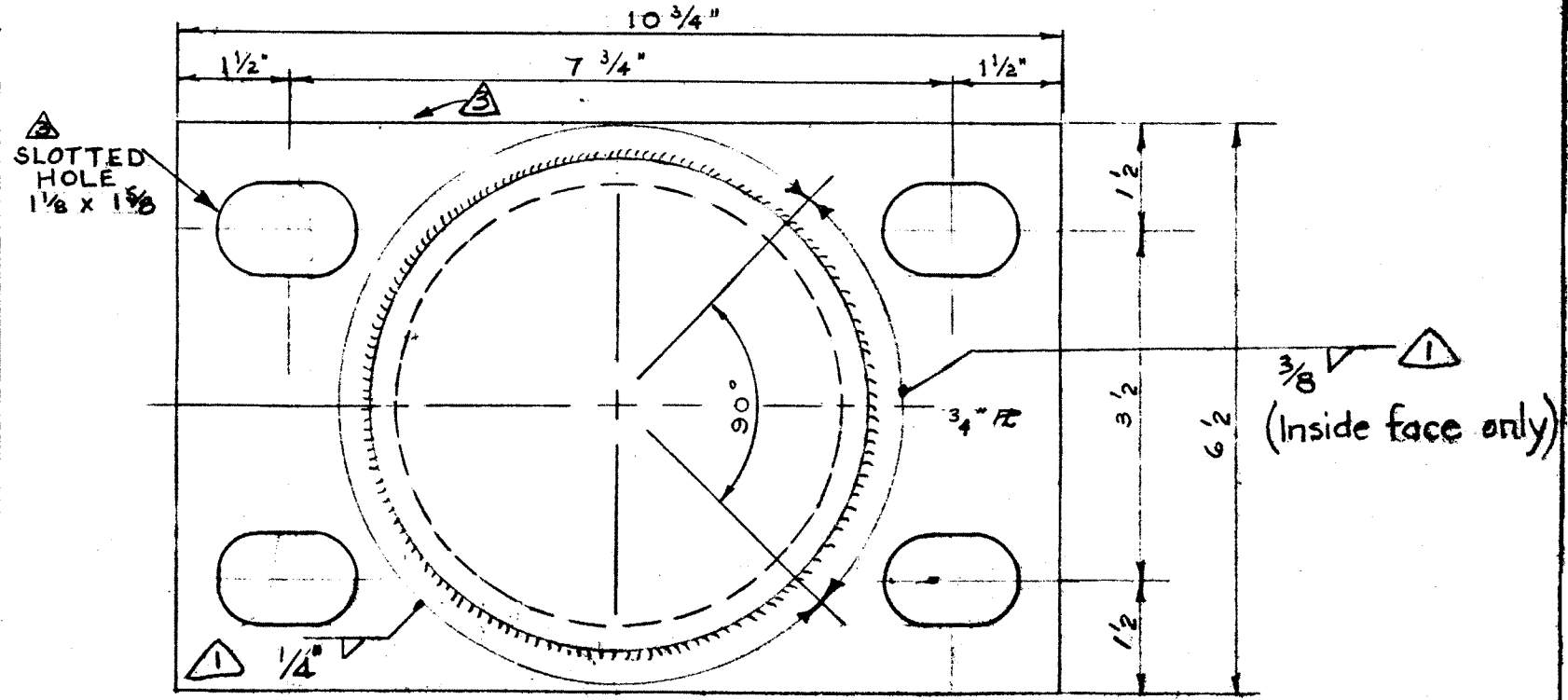
POST DETAILS
SCALE 1/2" = 1'-0"

SUPERSEDED

By: REDRAWN S-659
Nov. 16th/70



SPLICE PLATE
(FOR 3" x 8" TIMBER RAIL ONLY) △



BASE PLATE
SCALE 1/2" = 1'-0"

Total Wt. - 42# / post

STANDARD PIPE HANDRAIL
POST DETAILS

ED. J.S. March 4/58 **S-659**