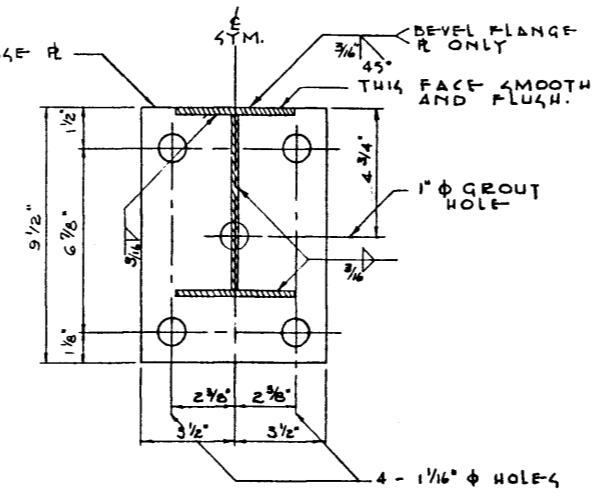
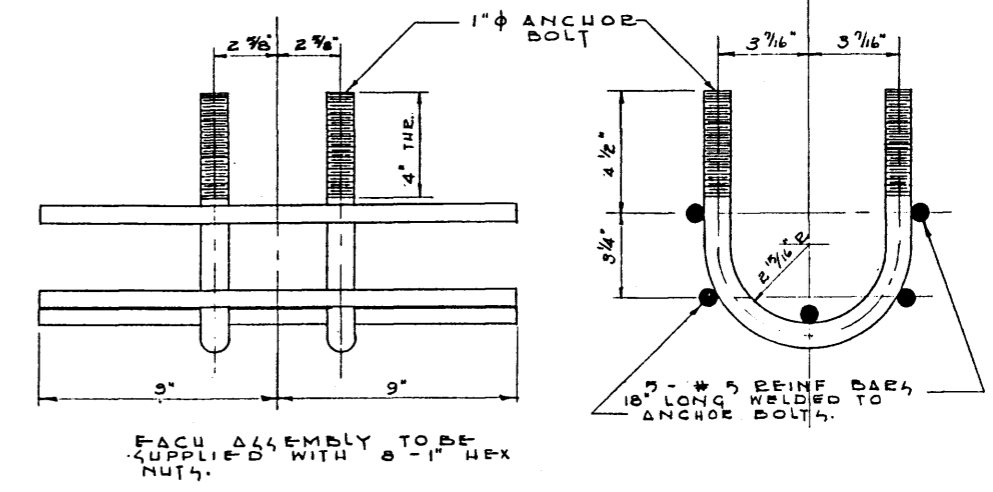


**ELEVATION**  
SCALE 3/4" = 1'-0"

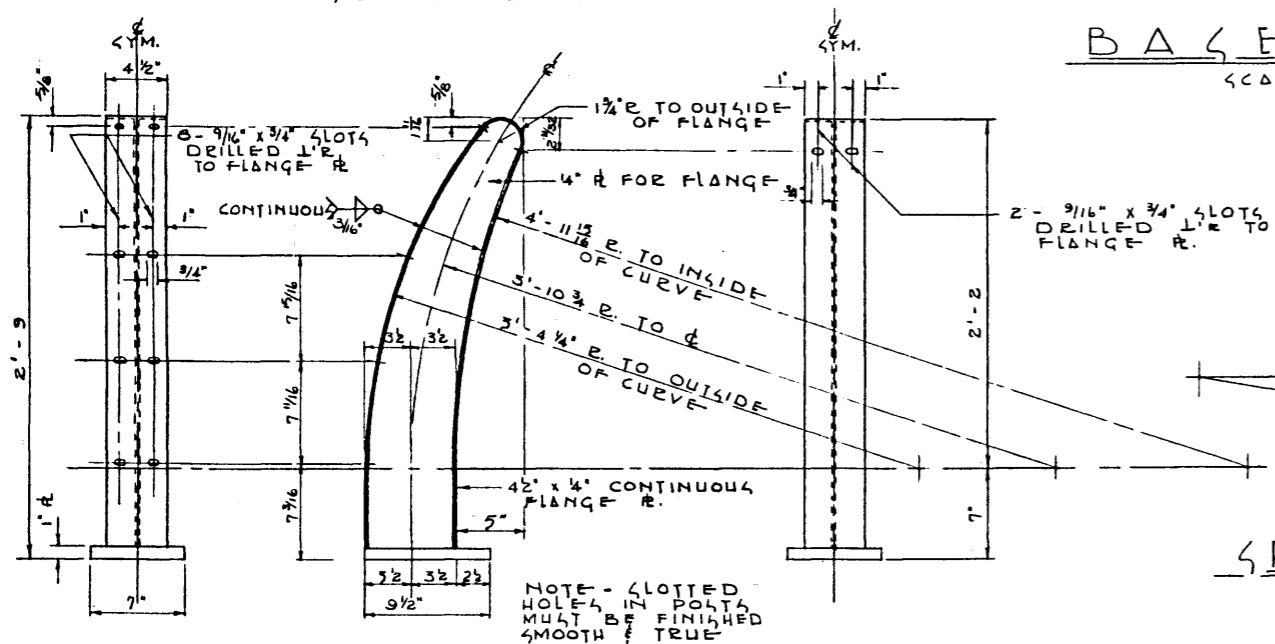


**BASE PLATE**  
SCALE 3" = 1'-0"



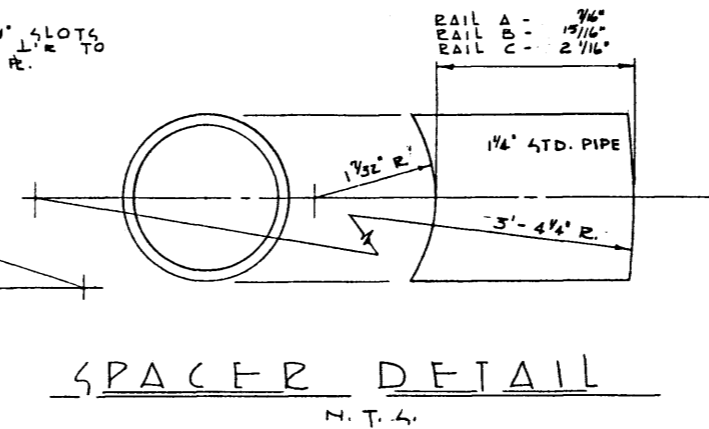
EACH ASSEMBLY TO BE SUPPLIED WITH 8 - 1" HEX NUTS.

**ANCHOR DETAILS**  
SCALE 3" = 1'-0"



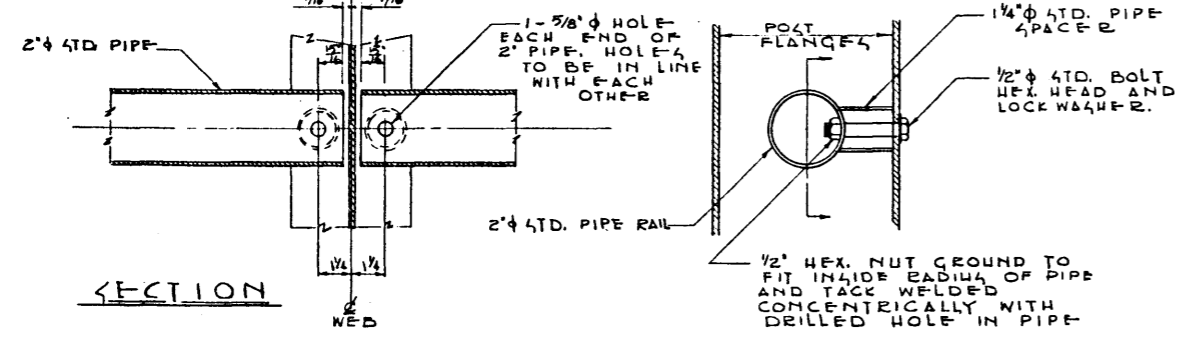
NOTE - SLOTTED HOLES IN POSTS MUST BE FINISHED SMOOTH & TRUE

**POST DETAIL**  
SCALE 1 1/2" = 1'-0"

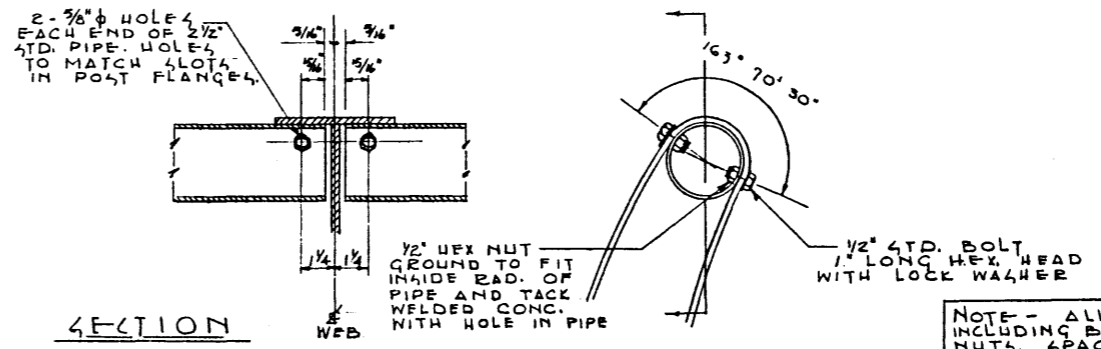


**SPACER DETAIL**  
N. T. C.

BILL OF MATERIALS	
NO.	DESCRIPTION
	POSTS - EACH WITH ONE ANCHOR ASSEMBLY
	RAIL 'A' SPACERS - EACH WITH ONE 1/2" Ø HEX. HEAD MACH. BOLT 1 1/2" LONG AND ONE LOCK WASHER.
	RAIL 'B' SPACERS - EACH WITH ONE 1/2" Ø HEX. HEAD MACH. BOLT 2" LONG AND ONE LOCK WASHER.
	RAIL 'C' SPACERS - EACH WITH ONE 1/2" Ø HEX. HEAD MACH. BOLT 3" LONG AND ONE LOCK WASHER.
	1/2" Ø HEX. HEAD BOLT 1" LONG WITH 1" LOCK WASHER EACH FOR TOP RAIL



**SECTION LOWER RAIL CONNECTION**  
SCALE 3" = 1'-0"



**SECTION TOP RAIL CONNECTION**  
SCALE 3" = 1'-0"

NOTE - ALL STEEL INCLUDING BOLT HEADS, NUTS, SPACERS, WASHERS, ETC. TO BE GIVEN ONE SHOP COAT OF RED LEAD TO BE APPLIED AS PER SPECIFICATION

**INCLINED  
HIGHWAY TYPE  
RAILING**

DEPARTMENT OF HIGHWAYS  
BRIDGE BRANCH  
APRIL 2 1958

CONTRACT NUMBER DWG. NO.  
5660

DESIGN BY J. H. DANIELS  
DWG. BY J. H. DANIELS  
MARCH 29 1958  
APRIL 2 1958

AT & U - RECORDS CENTRE  
710078