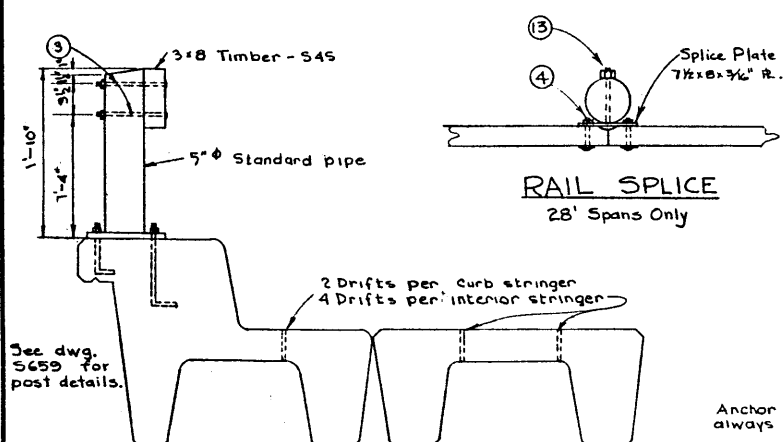
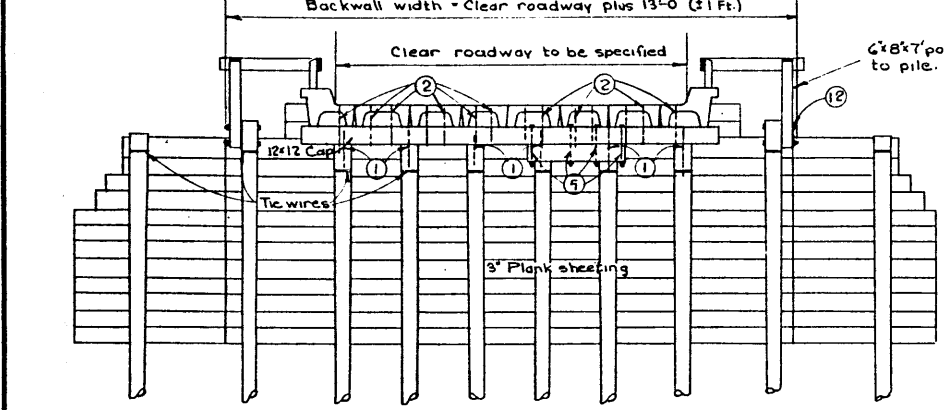


TREATMENT OF TIMBER - IMPORTANT

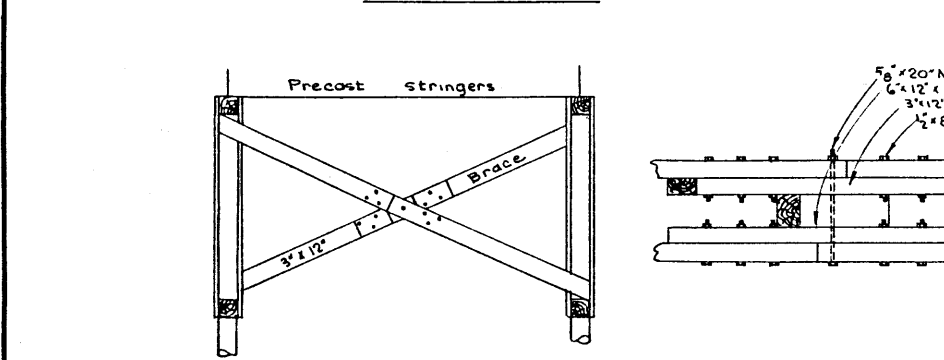
- (a) Pile tops under caps shall be coated with 3 application of creosote oil and thoroughly covered with roofing pitch.
- (b) Exposed pile tops shall be treated as in (a), and in addition shall be covered with 12 ga. galvanized sheet iron, of a size 4" greater in diameter than the pile. Neatly trim iron, bend down, and fasten to pile with galvanized roofing nails.
- (c) Treated timber shall be carefully handled, so as to avoid breaking of outer fibers and bruising or penetrating the surface. Tools to be used only on ends of timber.
- (d) All cuts and abrasions in treated timber, shall after careful trimming, be coated with 2 applications of creosote, and then be thoroughly covered with hot roofing pitch.
- (e) Treated piles must not be dapped for sway bracing in the field.
- (f) Bolt holes bored after treatment shall be carefully treated with creosote. Any unfilled holes shall be sealed with creosoted plugs.
- (g) For details of Standard Precast Units see dwgs 5665, 5666, 5667, 5668 for 16" deep units; 5762 dwgs 5736, 5737, 5738, 5739 for 20" deep units



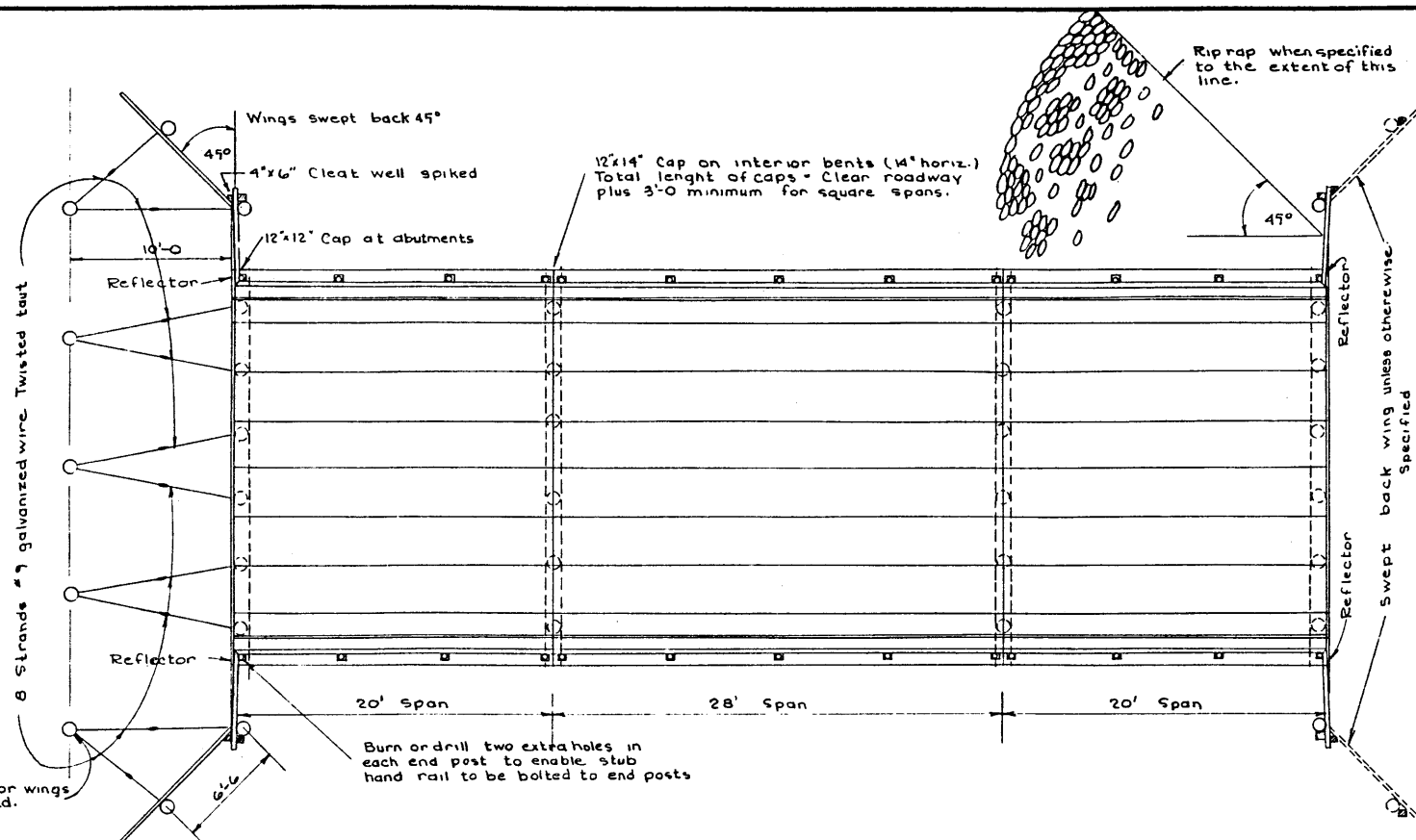
TYPE G STRINGER DETAILS



TOWER BRACING SPLICE DETAILS



Tower brace outside piles or posts only. Also place on 1/2 pile when roadway exceeds 36'-0.



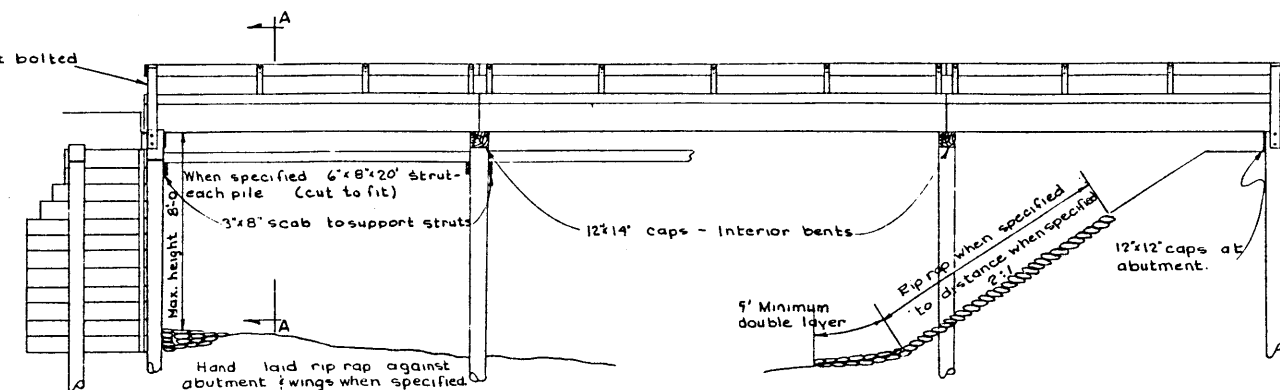
PILE SPACING FOR PRECAST BRIDGES
(PILE SPACING CENTER TO CENTER OF PILES)

	21 FT. ROADWAY			24 FT. ROADWAY		
	NO. PILES	CAP LENGTH	PILE SPACING	NO. PILES	CAP LENGTH	PILE SPACING
SQUARE	6	24	4'-0	6	27	4'-7 1/2
15° SKEW	6	25	4'-2 3/8	6	28	4'-9 3/8
30° SKEW	6	28	4'-9 3/8	7	32	4'-8
45° SKEW	7	34	5'-0	8	39	5'-0

	27 FT. ROADWAY			30 FT. ROADWAY		
	NO. PILES	CAP LENGTH	PILE SPACING	NO. PILES	CAP LENGTH	PILE SPACING
SQUARE	7	30	4'-4	7	33	4'-10
15° SKEW	7	32	4'-8	8	35	4'-3 1/8
30° SKEW	8	35	4'-5 1/8	8	39	5'-0
45° SKEW	9	43	4'-10	10	47	4'-9 3/8

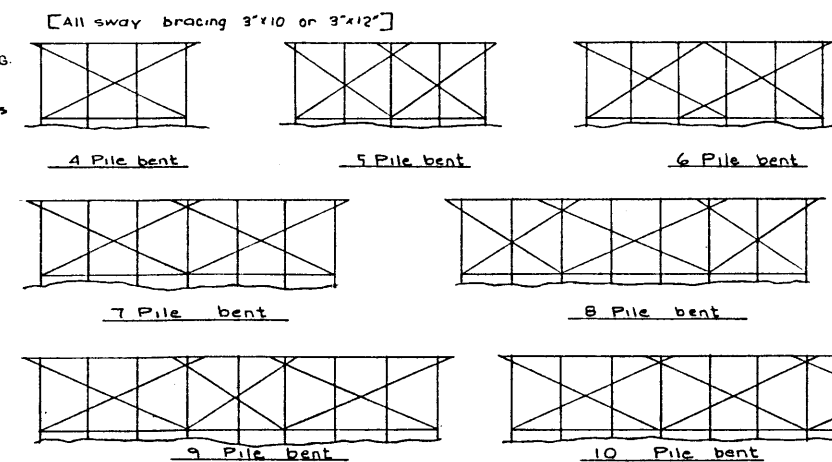
BILL OF HARDWARE

MARK	SIZE	TYPE	WASHERS	PLACING & NO. REQUIRED
1	3/4 x 22	DRIFTS		CAPS AND SUBCAPS TO PILES AND BENT
2	3/4 x 24	HEADLESS DRIFTS		STRINGERS AND CURBS TO CAPS
				4 PER STRINGER - 2 PER CURB
3	1/2 x 9	CARRIAGE BOLTS	2-3/8 FLAT	HANDRAIL TO POSTS - 2 PER POST
4	1/2 x 4 1/2	CARRIAGE BOLTS	1-5/8 FLAT	HANDRAIL SPLICE - 4 PER SPLICE
5	3/8 x 26	MACHINE BOLTS	2-3/8 O.G.	CAP SPLICE - 4 PER SPLICE
6	3/8 x 22	MACHINE BOLTS	2-3/8 O.G.	DOUBLE SWAY BRACE TO CAP
7	5/8 x 20	MACHINE BOLTS	2-3/8 O.G.	SINGLE SWAY BRACE TO CAP
8	3/8 x 20	MACHINE BOLTS	2-3/8 O.G.	TOWER BRACE
9	1/2 x 8	MACHINE BOLTS	2-1/2 O.G.	TOWER BRACE SPLICE
10	3/4 x 8	DOWEL		PILE SPLICE - 2 PER SPLICE
11	3/8 x 16	MACHINE BOLTS		PILE SPLICE - 8 PER SPLICE
12	3/8 x 20	MACHINE BOLTS	2-3/8 O.G.	HANDRAIL POST - 2 PER POST

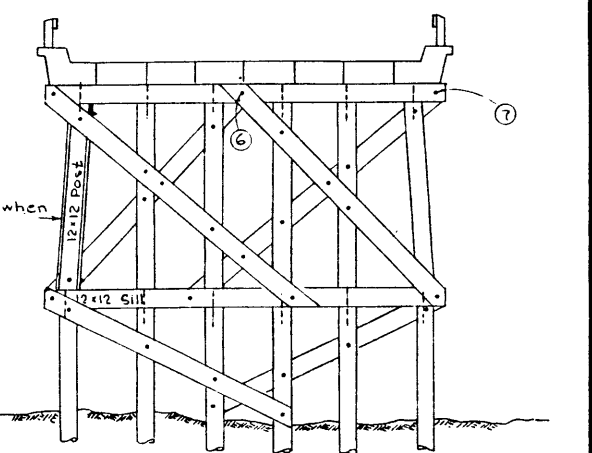


SHOWING BACKWALL TYPE ABUTMENT

SHOWING SPILL-THROUGH TYPE ABUTMENT



SWAY BRACING LAYOUT
(Single storey bracing)
(Double storey bracing to be used when height is over 14'-0)



TYPICAL PONY BENT ON TOP OF PILES

2-3/8x8 Dowels (Used when pile lengths become excessive)
Metal bands applied with strapping machine.
4-2 1/2 x 4'-0 x 3/8 Plate
Holes 1/16 drill
8-3/8 x 14 bolts in 3/4 holes

NOTES: 1. Two reflectors at each end of bridge.
2. Pile splicing not to exceed 5'-0 on square spans

STANDARD PRECAST BRIDGE WITH TREATED TIMBER SUBSTRUCTURE

GOVERNMENT OF THE PROVINCE OF ALBERTA
DEPARTMENT OF HIGHWAYS
BRIDGE BRANCH, EDMONTON

FILE NO. HWY. NO. DWG. NO.
LOCATION SCALE 3/4" = 1'-0
STREAM SHEET OF S673

NO.	DATE	DESCRIPTION	BY
4			
3	Apr. 20/61	INCLUDED NEW 20" DEEP UNITS	SGW
2	AUG. 25/58	HANDRAIL SPLICE DETAIL ADDED	D.G.L.
1			

DESIGNED BY: ED. J. S.
CHECKED BY: M. S. S.
DATE: MARCH 13, 1958

B00427