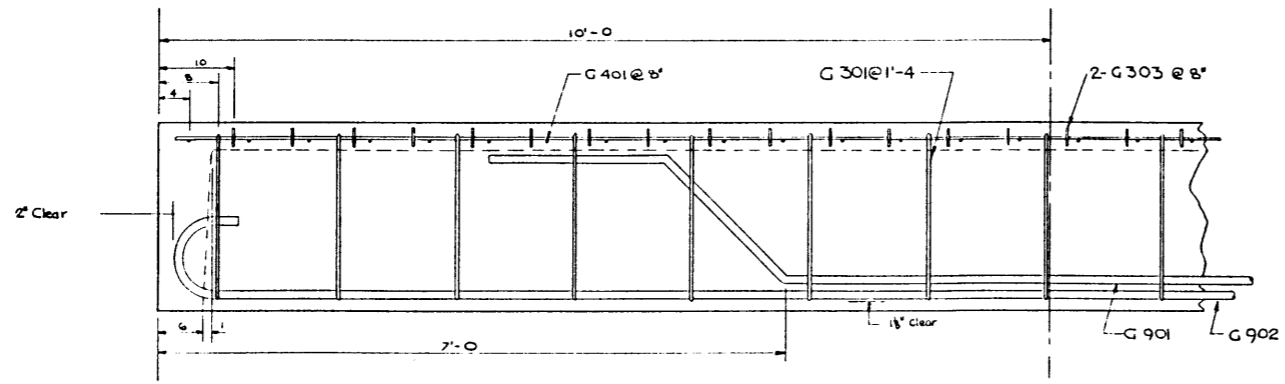
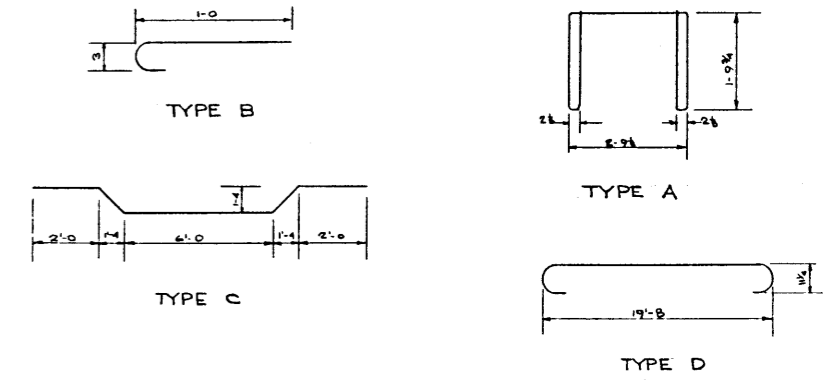


HALF PLAN
SCALE: 1" = 1'-0"

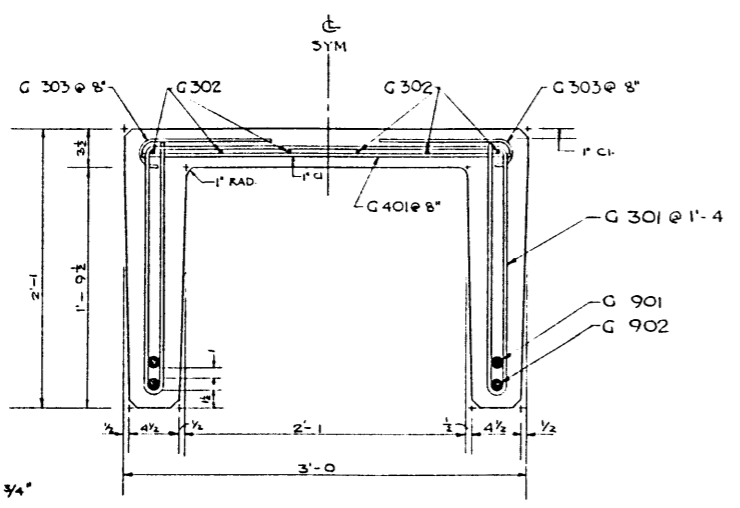
BAR LIST - 1 GIRDER

MARK	SIZE	NUMBER	TYPE	LENGTH	WEIGHT
G 301	3	15	A	10'-6	59
G 302	3	6	STR	19'-8	44
G 303	3	64	B	1'-5	34
G 401	4	30	STR	2'-8	53
G 901	9	2	C	13'-9	94
G 902	9	2	D	22'-2	151
TOTAL					435*

BAR TYPES
(ALL DIMENSIONS ARE OUT TO OUT)



ELEVATION
SCALE: 1" = 1'-0"



SECTION A-A
SCALE: 1 1/2" = 1'-0"

- GENERAL NOTES:**
- ALL CONCRETE MATERIALS USED SHALL CONFORM TO THE CURRENT APPLICABLE ASTM SPECIFICATIONS.
 - CONCRETE SHALL ATTAIN A MINIMUM COMPRESSIVE STRENGTH OF 4000 psi AT 28 DAYS.
 - ENTRAINED AIR SHALL FALL BETWEEN THE LIMITS OF 5% AND 8%.
 - REINFORCING STEEL SHALL BE INTERMEDIATE GRADE CONFORMING TO CSA SPECIFICATION G 30-1-1954 OR G 30-2-1954 AND SHALL BE DEFORMED CONFORMING WITH THE REQUIREMENTS OF G 30-6-1954.
- DESIGN:**
- ALBERTA GOVERNMENT 1955 SPECIFICATION.
 - ONE H 20- S16 WHEEL LINE PER STRINGER

DESIGNED BY: G. KOLL
 DATE: JUNE 13, 1958
 CHECKED BY: G. KOLL
 DATE: JUNE 13, 1958

ALL CHAMFERS 3/4"

NO.	DATE	DESCRIPTION	BY

STANDARD 25" CHANNEL STRINGER
20'-0" SPAN - STANDARD CONCRETE

GOVERNMENT OF THE PROVINCE OF ALBERTA
DEPARTMENT OF HIGHWAYS
BRIDGE BRANCH, EDMONTON

FILE NO. _____ HWY. NO. _____ DWG. NO. **5678**
 LOCATION _____ SCALE AS SHOWN
 STREAM _____ SHEET _____ OF _____