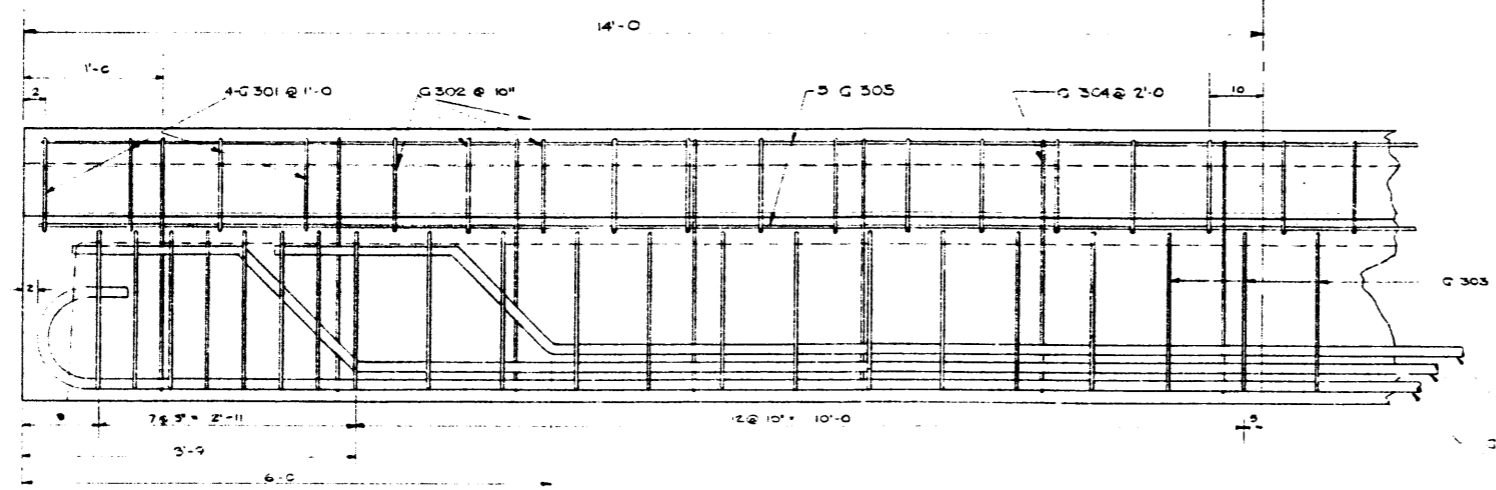
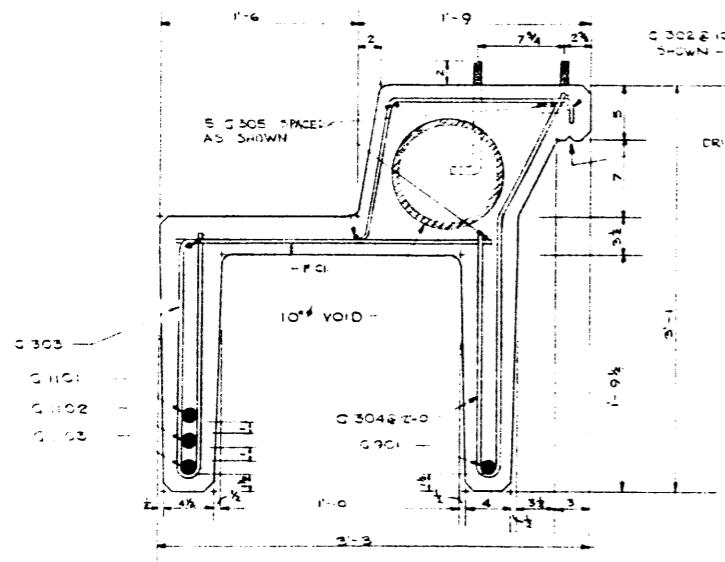


HALF PLAN
SCALE: 1" = 1'-0"



ELEVATION
SCALE: 1" = 1'-0"



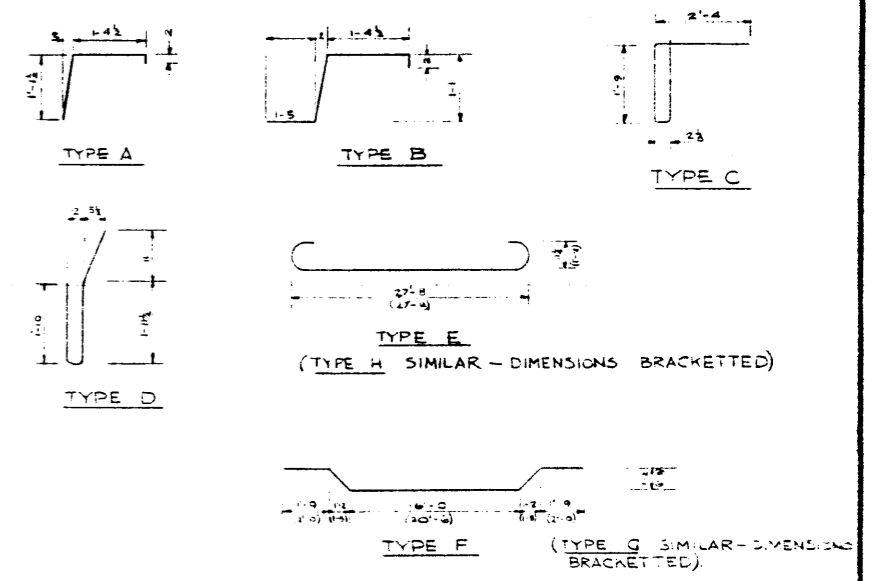
SECTION A-A
SCALE: 1/2" = 1'-0"

BAR LIST - 1 STRINGER

MARK	SIZE	NUMBER	TYPE	LENGTH	WEIGHT
G 301	3	8	A	2'-8"	8
G 302	3	24	B	4'-1"	57
G 303	3	40	C	6'-0"	90
G 304	3	14	D	5'-0"	26
G 305	3	3	STR	27'-8"	52
G 901	9	1	E	28'-11"	95
G 1101	11	1	F	22'-10"	121
G 1102	11	1	G	28'-6"	151
G 1103	11	1	H	29'-3"	155

TOTAL 738**

BAR TYPES
(ALL DIMENSIONS OUT TO OUT)



GENERAL NOTES

- ALL CONCRETE MATERIALS USED SHALL CONFORM TO THE CURRENT APPLICABLE ASTM SPECIFICATIONS.
- CONCRETE SHALL BE LIGHTWEIGHT AND SHALL ATTAIN A MINIMUM COMPRESSIVE STRENGTH OF 4000 p.s.i. AT 28 DAYS.
- ENTRAINED AIR SHALL FALL BETWEEN THE LIMITS OF 3% AND 8%.
- REINFORCING STEEL SHALL BE INTERMEDIATE GRADE CONFORMING TO CSA SPECIFICATION G 30.1-1954 OR G 30.2-1954 AND DEFORMED TO MEET THE REQUIREMENTS OF G 30.6-1954.

DESIGN

ALBERTA GOVERNMENT 1955 SPECIFICATION.
9/10 OF ONE H 20-516 WHEEL LINE PER STRINGER.

DESIGNED BY: G.L. KULAK
DATE: JUNE 16, 1955
DETAILED BY: G.L. KULAK
DATE: JUNE 20, 1955
CHECKED BY: _____
DATE: _____

NO.	DATE	DESCRIPTION	BY

STANDARD 25" CHANNEL CURB STRINGER
28'-0" SPAN

GOVERNMENT OF THE PROVINCE OF ALBERTA
DEPARTMENT OF HIGHWAYS
BRIDGE BRANCH, EDMONTON

FILE NO. _____ HWY. NO. _____ DWG. NO. 8 679
LOCATION _____ SCALE 1/4" = 1'-0" SHEET _____ OF _____
STREAM _____