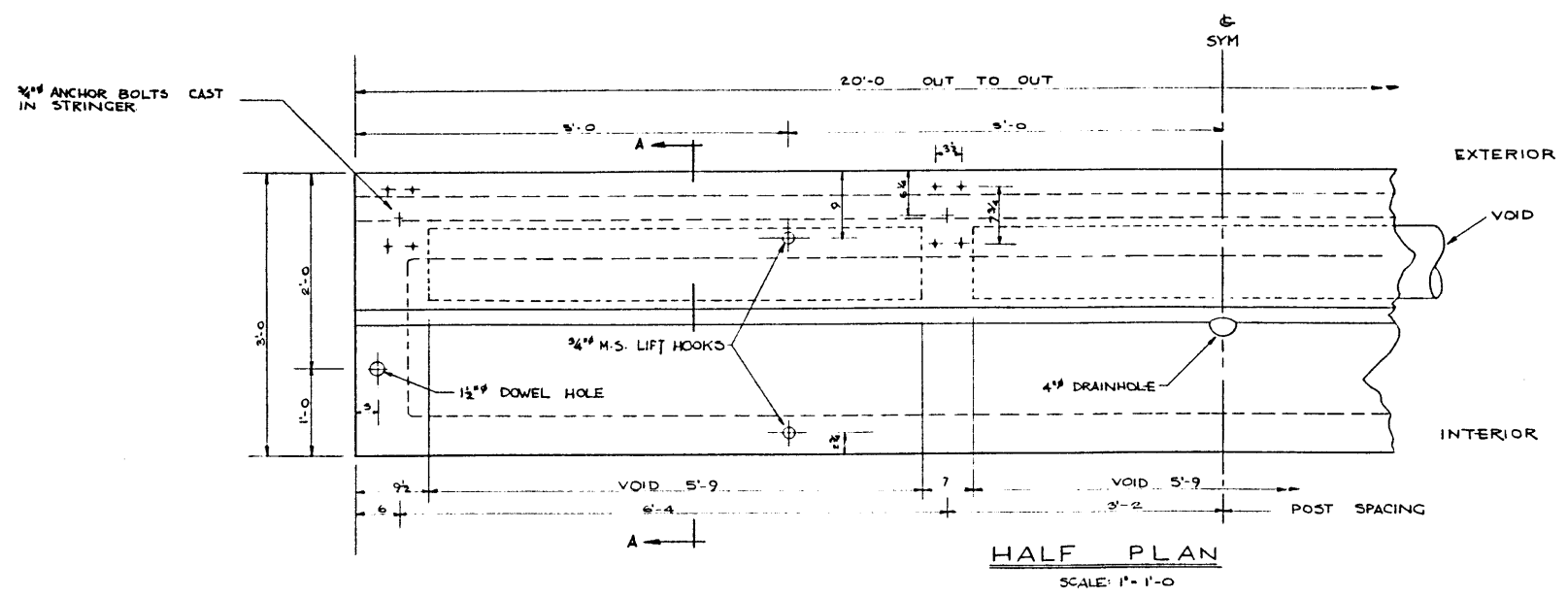


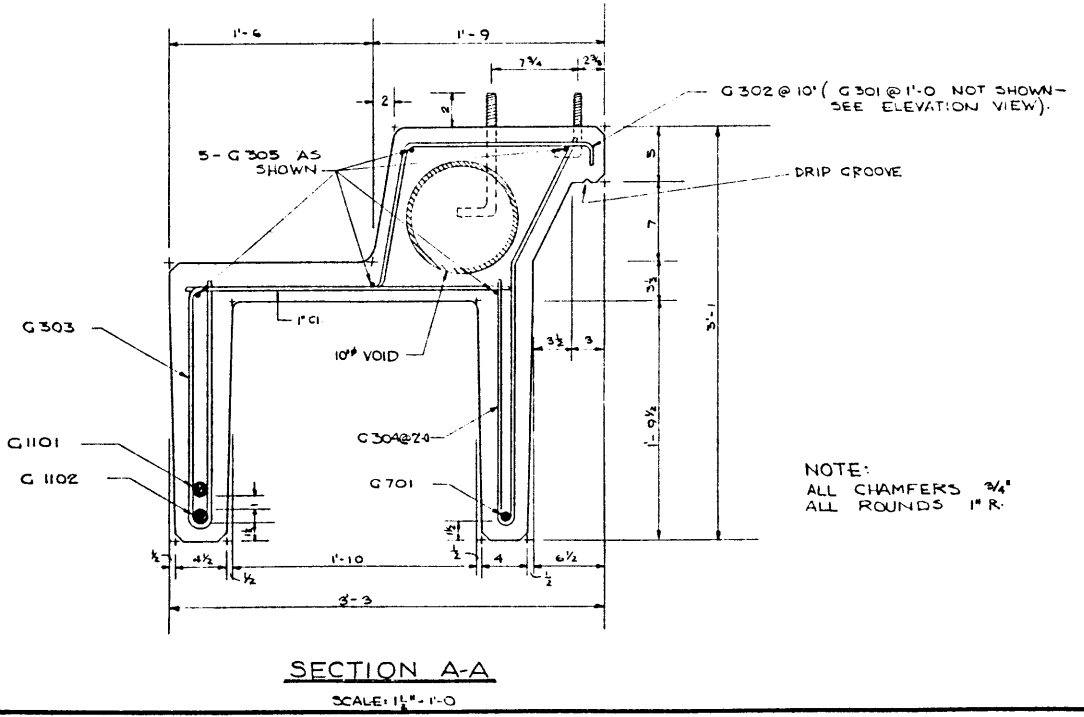
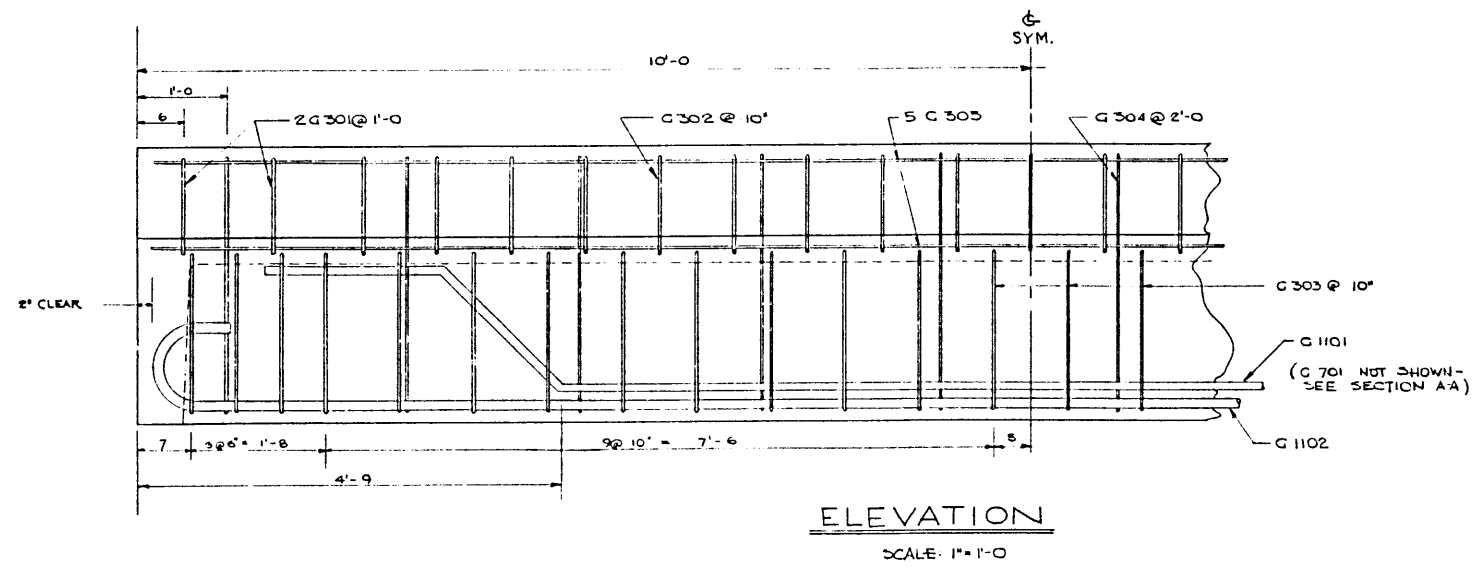
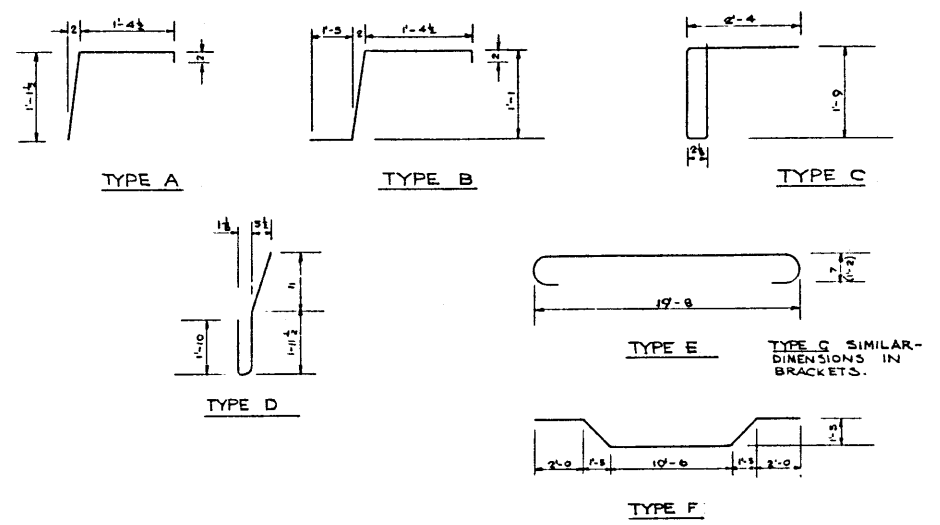
DESIGNED BY: C.L. KULAK DATE: JUNE 18 55
 CHECKED BY: C.L. KULAK DATE: JUNE 23 55



BAR LIST - 1 STRINGER

MARK	SIZE	NUMBER	TYPE	LENGTH	WEIGHT
G 301	3	4	A	2'-8	4
G 302	3	19	B	4'-1	29
G 303	3	26	C	6'-0	39
G 304	3	10	D	5'-0	19
G 305	3	5	STR	19'-8	37
C 701	7	1	E	20'-6	42
G 1101	11	1	F	18'-6	98
G 1102	11	1	G	21'-3	113
TOTAL					401*

BAR TYPES
(ALL DIMENSIONS ARE OUT TO OUT)



- GENERAL NOTES:**
- ALL CONCRETE MATERIALS USED SHALL CONFORM TO THE CURRENT APPLICABLE ASTM SPECIFICATIONS.
 - CONCRETE SHALL ATTAIN A MINIMUM COMPRESSIVE STRENGTH OF 4000 P.S.I. AT 28 DAYS.
 - ENTRAINED AIR SHALL FALL BETWEEN THE LIMITS OF 5% AND 8%.
 - REINFORCING STEEL SHALL BE INTERMEDIATE GRADE CONFORMING TO CSA SPECIFICATION G 30.1-1954 OR G 30.2-1954 AND DEFORMED TO MEET THE REQUIREMENTS OF G 30.6-1954.
- DESIGN**
 - ALBERTA GOVERNMENT 1955 SPECIFICATION
 - 9% OF ONE H20-516 WHEEL LINE PER STRINGER

NOTE:
 ALL CHAMFERS 3/4"
 ALL ROUNDS 1" R.

STANDARD 25" CHANNEL CURB STRINGER
 20'-0 SPAN

GOVERNMENT OF THE PROVINCE OF ALBERTA
 DEPARTMENT OF HIGHWAYS
 BRIDGE BRANCH, EDMONTON

FILE NO. _____ HWY. NO. _____ DWG. NO. S 680
 LOCATION _____ SCALE AS SHOWN
 SHEET _____ OF _____

NO.	DATE	DESCRIPTION	BY