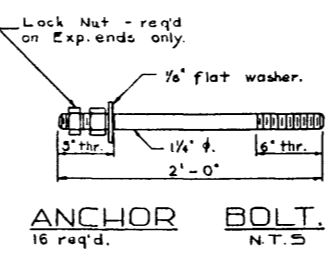
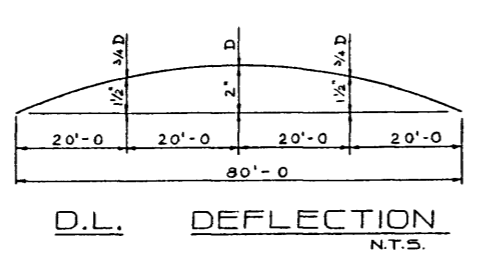
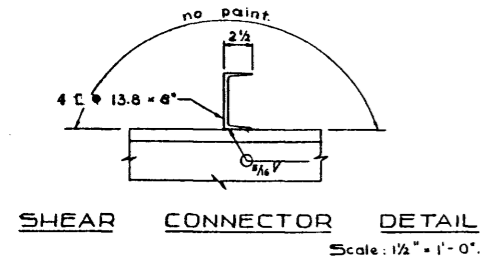


**GENERAL NOTES**

- Shop paint - 1 coat red lead, except on surfaces in contact with concrete.
- Design A.A.S.H.O 1953 specs.
- Live load H20 - 516 - 44.
- 25 P.s.f. wearing surface.



NO.	DATE	DESCRIPTION	BY

**STANDARD 80' SPAN  
28' ROADWAY  
COMPOSITE GIRDER DETAIL**

GOVERNMENT OF THE PROVINCE OF ALBERTA  
DEPARTMENT OF HIGHWAYS  
BRIDGE BRANCH, EDMONTON

FILE NO.	HWY. NO.	DWG. NO.
LOCATION	SCALE As noted	5690
STREAM	SHEET OF	

DESIGNED BY: DATE: 16 MARCH 1959  
 CHECKED BY: DATE:

AT U.S. RECORDS SERVICE