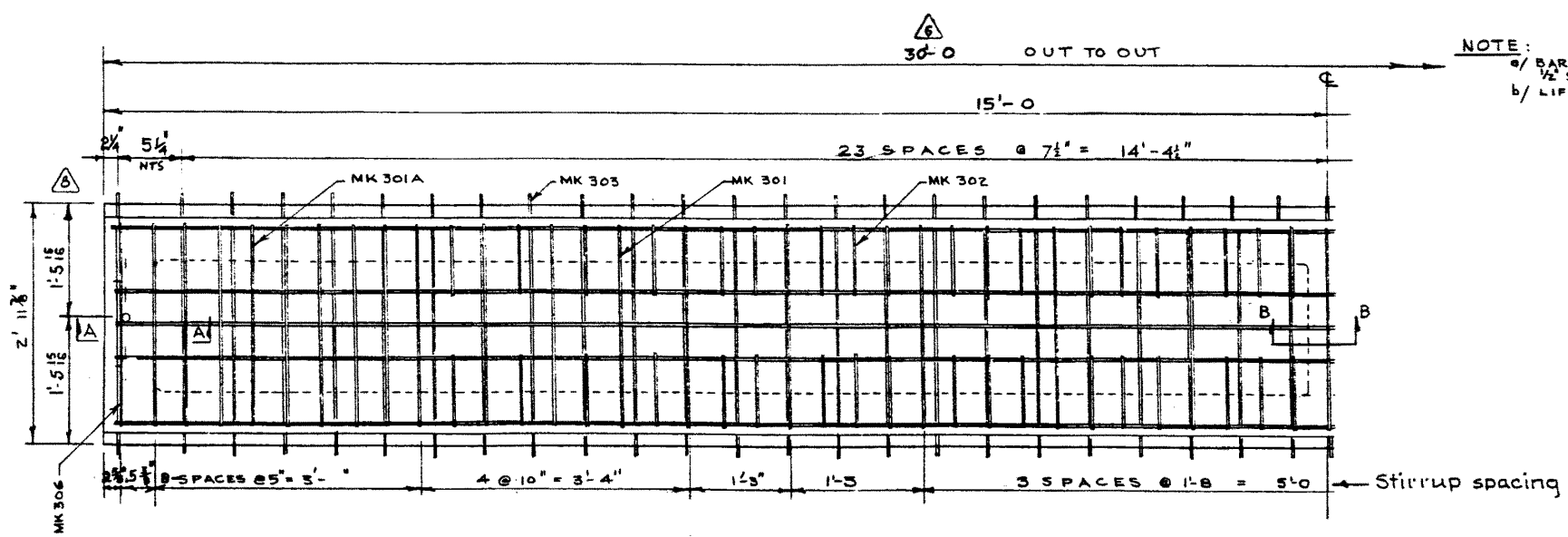


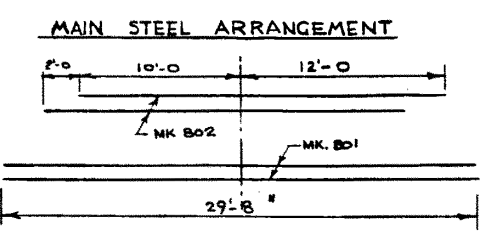
STEEL SCHEDULE (INTERIOR STRINGER)

MARK	NO. REQ'D	SIZE	CUT LENGTH	SKETCH	WEIGHT	REMARKS
301	23	3	6'7"		57	
302	72	3	1'4"		36	
303	49	3	4'1"		75	
304	16	3	5"	STR.	2	
305	3	3	29'8"	STR.	33	
306	4	3	9'3"		14	
301A	10	3	10'7"		40	
401	2	4	29'8"	STR.	40	
501	2	5	2'7"	DO.	5	DIAPHRAGM
801	4	8	29'8"	STR.	317	
802	4	8	22'0"	DO.	235	
					TOTAL	854

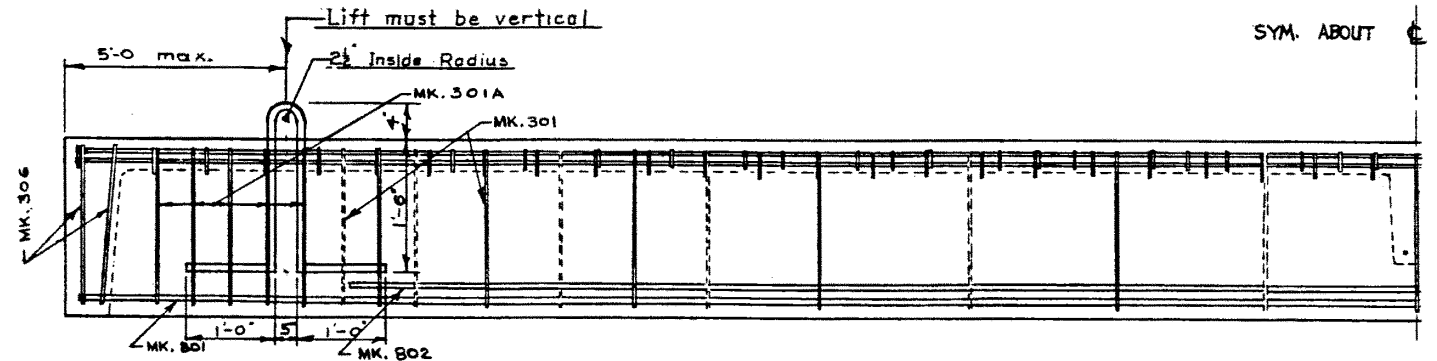


PLAN VIEW
SCALE 3/4" = 1'-0"

NOTE:
a/ BARS MK. 301, 302 & 303 ARE 1/2 SKEW.
b/ LIFTBARS AS REQUIRED

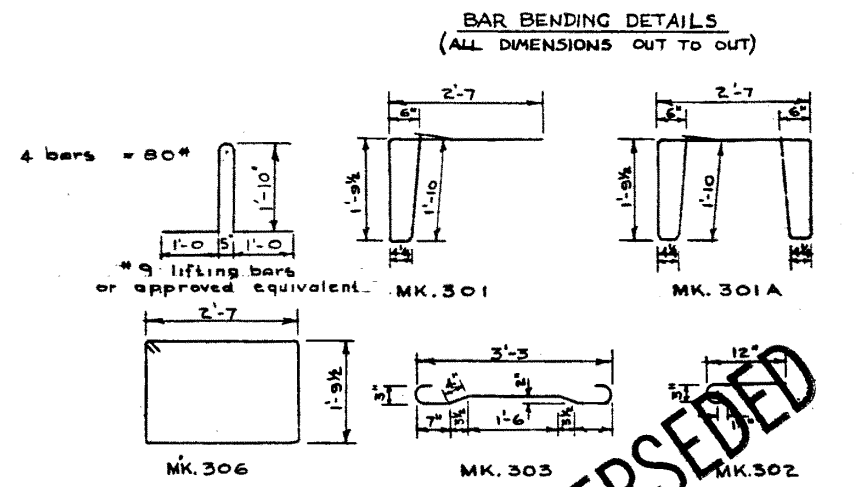


MAIN STEEL ARRANGEMENT

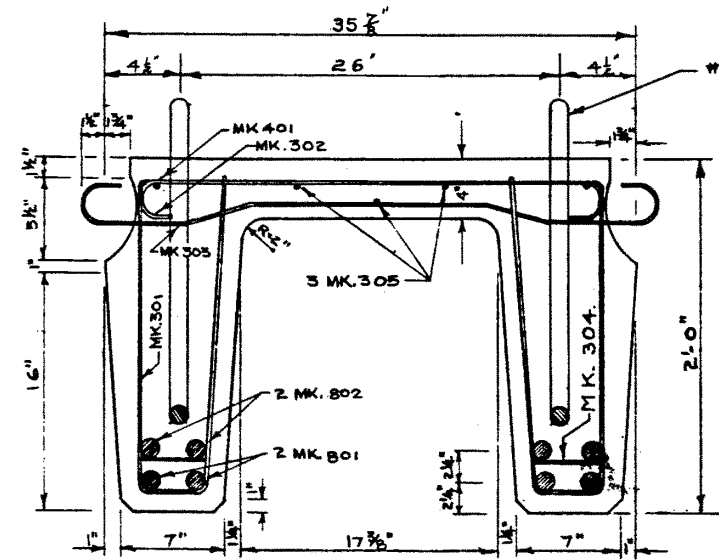


ELEVATION

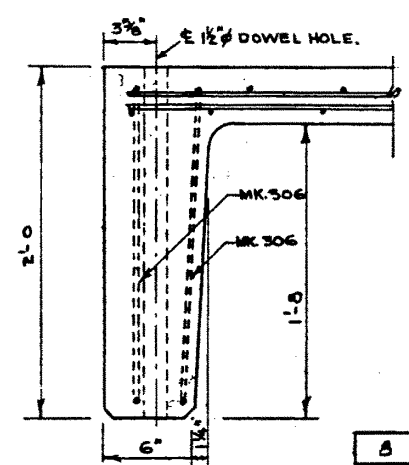
Note: Lifting bars to be burned off flush with surface after stringers in place.



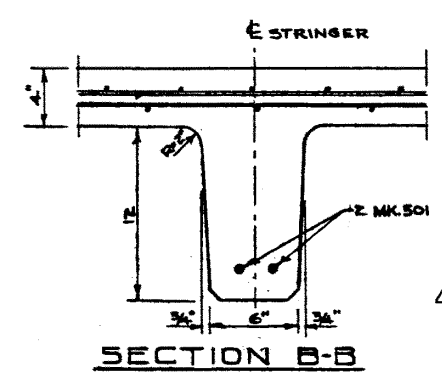
BAR BENDING DETAILS
(ALL DIMENSIONS OUT TO OUT)



CROSS SECTION
SCALE 1 1/2" = 1'-0"



SECTION A-A



SECTION B-B

GENERAL NOTES

- All concrete materials shall conform to the current applicable ASTM specification for concrete and aggregate & shall attain a minimum compressive strength of 1000 psi at 28 days.
- 5.5% ± 1.0% air for concrete and 10% for aggregate.
- Concrete shall be of a grade conforming to CSA specification G 30.1-1954 or G 30.2-1954 and deformed to conform to the requirements of G 30.6-1954. — Loading. Live load - H20-S16 of the AASHTO Specifications. 3/5 wheel load to each stringer. Dead load ~ 25 psf wearing surface.
- Stringers to be cast according to details on this drawing except for special alterations shown on accompanying drawings.

PRECAST CONCRETE STRINGER
TYPE E 30 FT.
LOADING H20-S16



GOVERNMENT OF THE PROVINCE OF ALBERTA
DEPARTMENT OF HIGHWAYS
BRIDGE BRANCH, EDMONTON

NO.	DATE	DESCRIPTION	BY
8	April 25/62	Changed to one dowel hole each end	B.W.S.
7	Mar 6/62	Entrained air.	W.J.H.
6	Aug 10/60	Length	I.L.W.
5	May 12/60	Reinforcement details; Length.	I.L.W.
4	Oct 7/59	Note added	R.E.
3	June 17/59	Alt. lift bars, 4000 p.s.i. conc.	F.M.
2	MAY 22/58	Lifting bars Added	R.L.C.
1	APRIL 6/58	TRACED BY	D.G.L.

REVISIONS

FILE NO.	HWY. NO.	DWG. NO.
		5692
LOCATION	SCALE	
STREAM	SHEET	OF

SUPERSED BY S-806