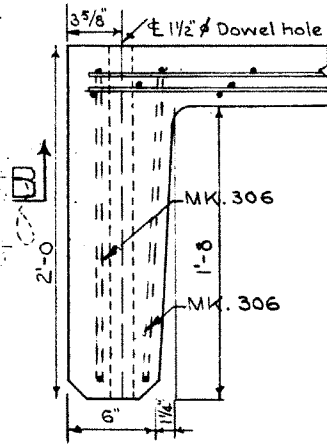


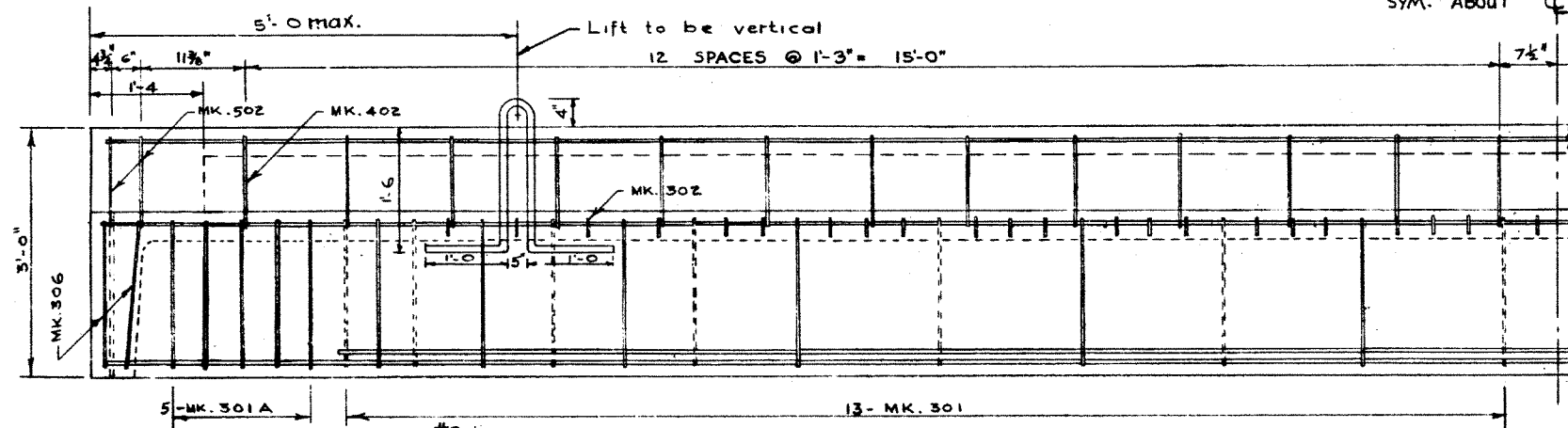
PLAN VIEW
SCALE 3/4" = 1'-0"



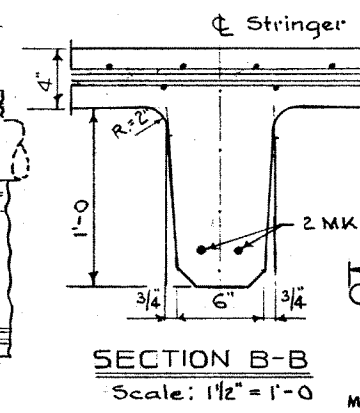
SECTION A-A
Scale: 1 1/2" = 1'-0"

STEEL SCHEDULE (CURB STRINGER)						
MARK	SIZE	N ^o REQD	CUT LENGTH	SKETCH	WEIGHT	REMARKS
301	#3	26	6'-7"		64	
301A	#3	10	10'-7"		40	
302	#3	44	1'-4"		22	
303A	#3	56	3'-5"		72	
304	#3	26	5"	STR.	3	
305	#3	3	24'-8"	DO.	39	
306	#3	4	9'-3"		14	
401	#4	4	24'-8"	STR.	93	
402	#4	26	4'-2"		72	
501	#5	2	2'-7"	STR.	5	
502	#5	4	4'-2"		17	
801	#8	2	24'-8"	STR.	185	
802	#8	2	25'-3"	DO.	134	
901	#9	2	24'-8"	DO.	236	
902	#9	2	26'-8"	DO.	181	
TOTAL					1177	

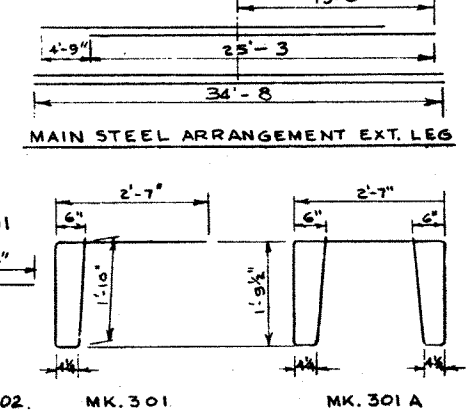
NOTE:
FOR MAIN STEEL INTERIOR LEG
SEE DWG. NO. S 694



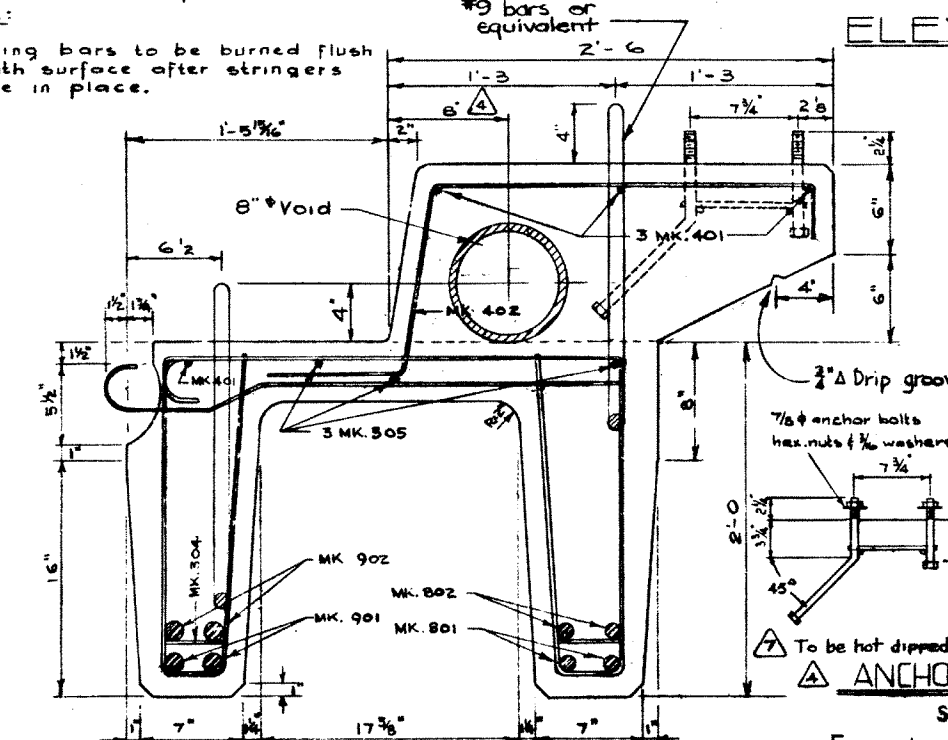
ELEVATION



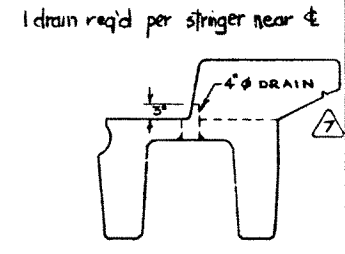
SECTION B-B
Scale: 1 1/2" = 1'-0"



Note:
Lifting bars to be burned flush with surface after stringers are in place.



CROSS SECTION
SCALE 1 1/2" = 1'-0"



DRAIN DETAIL
SCALE 1/2" = 1'-0"

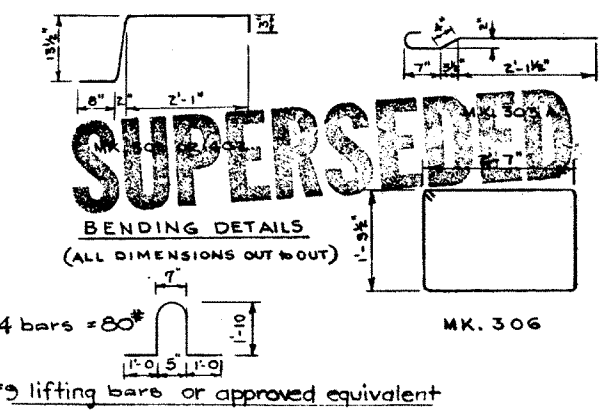
To be hot dipped galvanized after assembly
ANCHOR BOLT DETAIL

SCALE: 1" = 1'-0"
For number of assemblies and positions see accompanying drawings.

GENERAL NOTES

- All Concrete materials shall conform to the current applicable A.S.T.M. specifications.
- Concrete shall be of std. aggregate & shall attain a min. compressive strength of 4000 psi. at 28 days.
- Entrained air shall fall within the limits 5.5% ± 1.0%
- Reinforcing steel shall be intermediate grade conforming to the C.S.A. spec. G30.1-1954 or G30.2-1954 & deformed to conform to the requirements of G30.6-1954.
- Loading live load H20-516 of the A.A.S.H.O. 3/5 wheel load to each stringer. Dead load 25 psf. wearing surface.
- Stringers to be cast according to details on this drawing except for special alterations shown on accompanying drawings.

NO.	DATE	DESCRIPTION	BY
8	April 25/82	Changed to one dowel hole each end.	B.W.S.
7	Mar 6/62	Entrained air & Anchor bolts	W.J.H.
6	Aug 10/60	Length.	I.L.W.
5	May 12/60	Reinforcement details; Length.	I.L.W.
4	Oct 7/59	Note added, anchor bolts, void	R.E.
3	June 17/59	All lift bars, 4000 p.s.i. conc. length 902	H.H.H.
2	May 21/59	Added lifting bars	F.M.
1	APRIL 8/50	TRACED BY	D.G.L.



PRECAST CONCRETE CURB STRINGER
TYPE E.K. 35 FT.
LOADING H20 516

GOVERNMENT OF THE PROVINCE OF ALBERTA
DEPARTMENT OF HIGHWAYS
BRIDGE BRANCH, EDMONTON

FILE NO. _____ HWY. NO. _____ DWG. NO. 5695
LOCATION _____ SCALE _____ SHEET _____ OF _____
STREAM _____