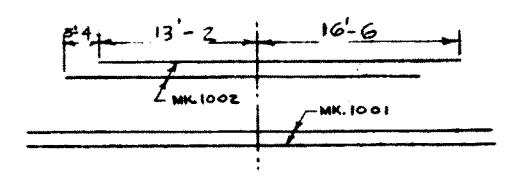


PLAN VIEW
SCALE 3/4" = 1'-0"

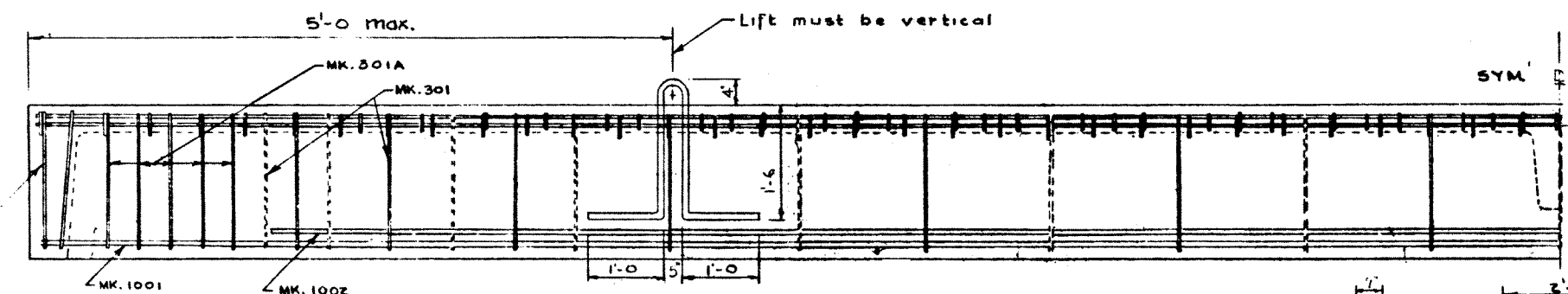
NOTE: ALL STRINGERS TO BE BUILT TO SKEW 6° R.H.F.

STEEL SCHEDULE (INTERIOR STRINGER)

MARK	NO REQD	SIZE	CUT LENGTH	SKETCH	WEIGHT	REMARKS
301	28	#3	6'-7"			
302	102	#3	1'-4"			
303	60	#3	4'-1"			
304	22	#3	1'	STR.		
305	3	#3		STR.		Full length - 3/2
306	4	#3	9'-3"			
301A	10	#3	10'-7"			
401	2	#4		STR.		Full length - 3/2
501	2	#5	2'-7"	DO.		DIAPHRAGM
1001	4	#10		STR.		Full length - 3/2
1002	4	#10	29'-8"	DO.		
TOTAL						

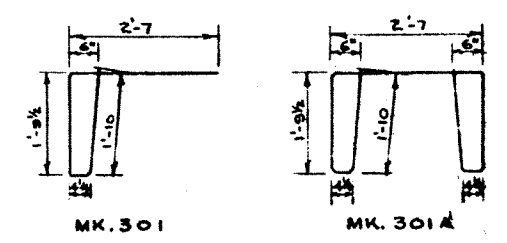


MAIN STEEL ARRANGEMENT

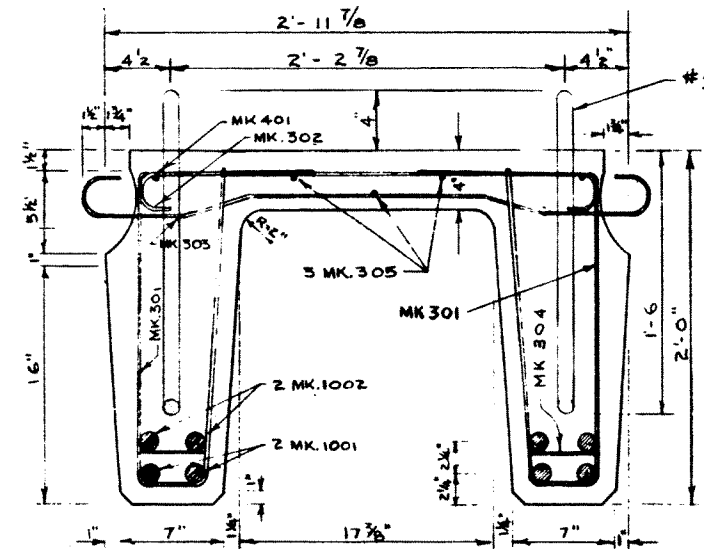


ELEVATION

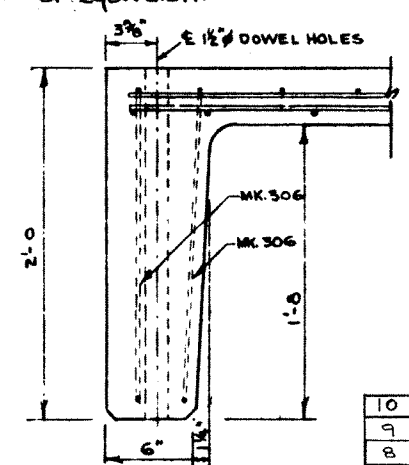
NOTE: Lifting bars to be burned flush with surface after stringers are in place



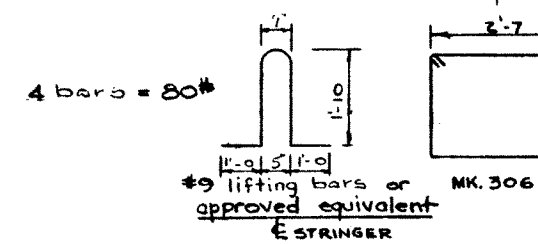
BAR BENDING DETAILS
(ALL DIMENSIONS OUT TO OUT)



CROSS SECTION
SCALE 1/2" = 1'-0"



SECTION A-A



SECTION B-B

GENERAL NOTES

- All concrete materials shall conform to the current applicable A.S.T.M. specifications - Concrete shall be of standard aggregate & shall attain a min. compressive strength of 4000 psi. at 28 days. - Entrained air shall fall within the limits 5.5% ± 1.0% - Reinforcing steel shall be intermediate grade conforming to the C.S.A. Specification G 30.1 - 1954 or G 30.2 - 1954 & deformed to conform to the requirements of G 30.6 - 1954.
- Loading live load H20-S16 of the A.A.S.H.O. 3/5 wheel load to each stringer. Dead load 25 psf. wearing surface.
- Stringers to be cast according to details on this drawing except for any alterations shown on accompanying drawings.

PRECAST CONCRETE STRINGER
TYPE E 40 FT.
LOADING H20-S16

GOVERNMENT OF THE PROVINCE OF ALBERTA
DEPARTMENT OF HIGHWAYS
BRIDGE BRANCH, EDMONTON

NO.	DATE	DESCRIPTION	BY
10	Mar 6/62	Entrained air	W.J.H.
9	June 6/60	Correct length for McKenney G.S.	H.H.H.
8	May 28/60	Adapted for new length	H.H.H.
7	May 6/60	Reinforcement details; Length.	I.L.W.
6	Oct 8/59	Note added	R.E.
5	Sep. 16, 59	Corrected dimensions.	I.L.W.
4	July 29/59	1002 from 30-10 to 29-8	HHH
3	June 17/59	All bars length 1002, 4000 psi conc.	HHH
2	May 20/59	Added lifting bars	F.M.
1	APRIL 6/59	TRACED BY	D.G.L.

SUPERSEDED By S810

FILE NO. _____ HWY. NO. _____ DWG. NO. **5696A**
LOCATION _____ SCALE _____
STREAM _____ SHEET _____ OF _____