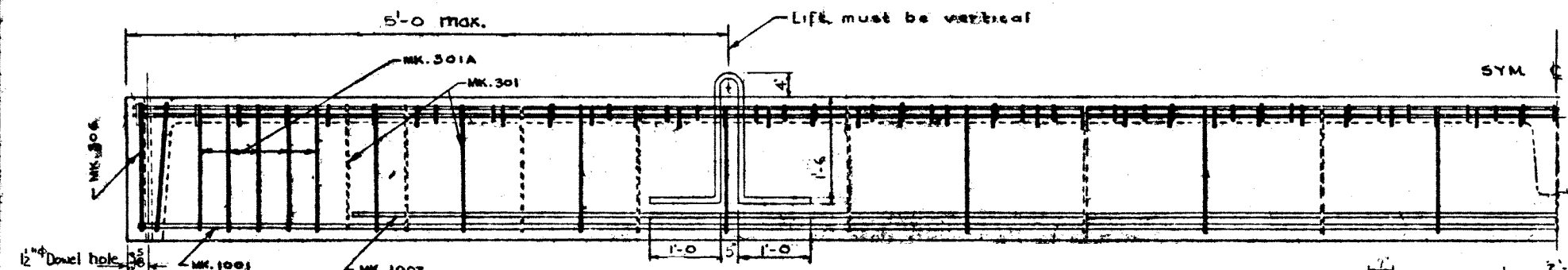
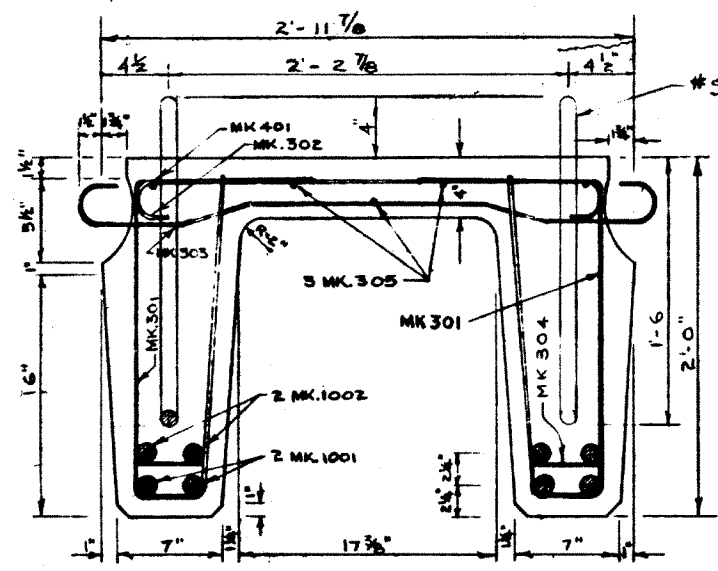


PLAN VIEW
SCALE 3/4" = 1'-0"

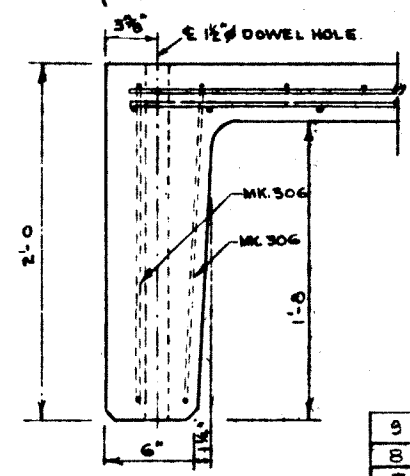


ELEVATION

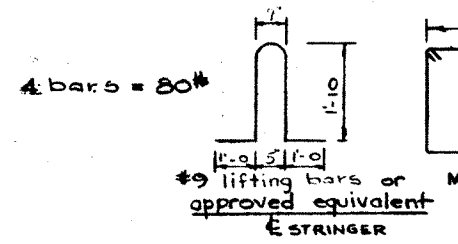
NOTE
Lifting bars to be burned flush with surface after stringers are in place.



CROSS SECTION
SCALE 1 1/2" = 1'-0"



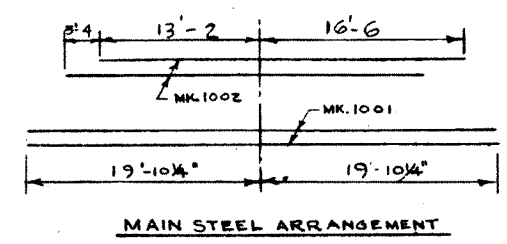
SECTION A-A



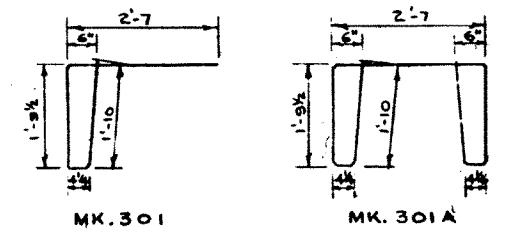
SECTION B-B

STEEL SCHEDULE (INTERIOR STRINGER)

MARK	NR REQD	SIZE	CUT LENGTH	SKETCH	WEIGHT	REMARKS
301	29	#3	6'-7"		72	
302	108	#3	1'-4"		54	
303	65	#3	4'-1"		100	
304	22	#3	5'	STR.	3	
305	3	#3	39'-8 1/2"	STR.	45	
306	4	#3	9'-3"		14	
301A	10	#3	10'-7"		40	
401	2	#4	39'-8 1/2"	STR.	53	
501	2	#5	2'-7"	DO.	5	DIAPHRAGM
1001	4	#10	39'-8 1/2"	STR.	683	
1002	4	#10	29'-8"	DO.	511	
				TOTAL	1580	



MAIN STEEL ARRANGEMENT



BAR BENDING DETAILS
(ALL DIMENSIONS OUT TO OUT)

GENERAL NOTES

- All concrete materials shall conform to the current applicable A.S.T.M. specifications - Concrete shall be of standard aggregate & shall attain a min. compressive strength of 4000 psi. at 28 days. - Entrained air shall fall within the limits 5.5% ± 1.0% - Reinforcing steel shall be intermediate grade conforming to the C.S.A. Specification G 30.1 - 1954 or G 30.2 - 1954 & deformed to conform to the requirements of G 30.6 - 1954.
- Loading live load H20-S16 of the A.A.S.H.O. 3/5 wheel load to each stringer. Dead load 25 psf. wearing surface.
- Stringers to be cast according to details on this drawing except for special alterations shown on accompanying drawings.

PRECAST CONCRETE STRINGER
TYPE E 40 FT.
LOADING H20-S16

GOVERNMENT OF THE PROVINCE OF ALBERTA
DEPARTMENT OF HIGHWAYS
BRIDGE BRANCH, EDMONTON

FILE NO. _____ HWY. NO. _____ DWG. NO. **5696**
LOCATION _____ SCALE _____ SHEET _____ OF _____
STREAM _____

NO.	DATE	DESCRIPTION	BY
9	April 25/62	Changed to one dowel hole each end.	B.W.S.
8	Mar 6/62	Entrained air	W.J.H.
7	May 6/59	Reinforcement details	I.L.W.
6	Oct 1/59	Note added	R.E.
5	Sep. 16. 59	Corrected dimensions.	I.L.W.
4	July 29/59	1002 from 30-10 to 29-8	H.H.H.
3	June 17/59	All lifting bars length 1002 4000PSI conc.	H.H.H.
2	May 20/59	Added lifting bars	F.M.
1	APRIL 6/59	TRACED BY	D.G.L.

SUPERSEDED By S810

REVISIONS