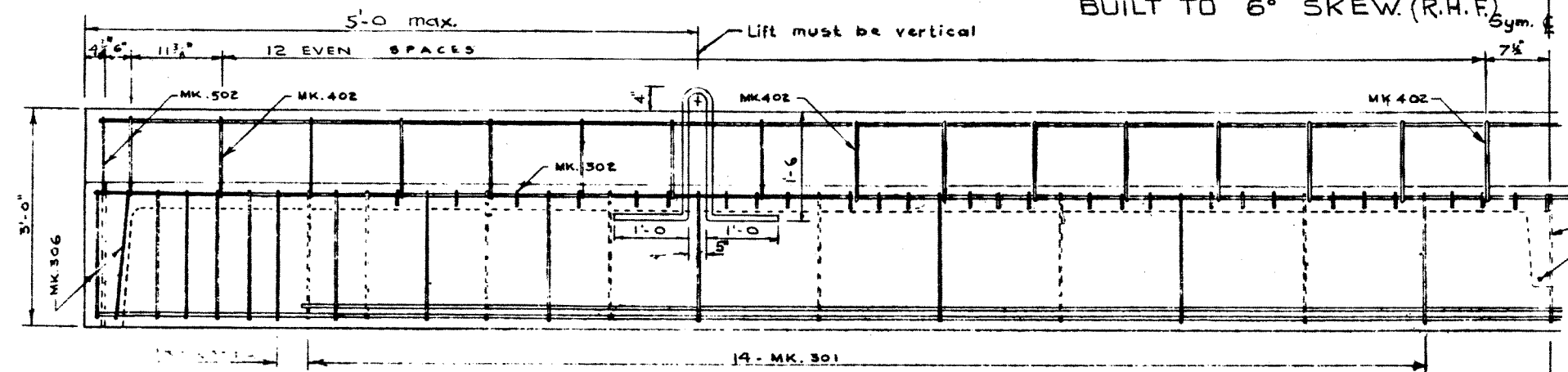


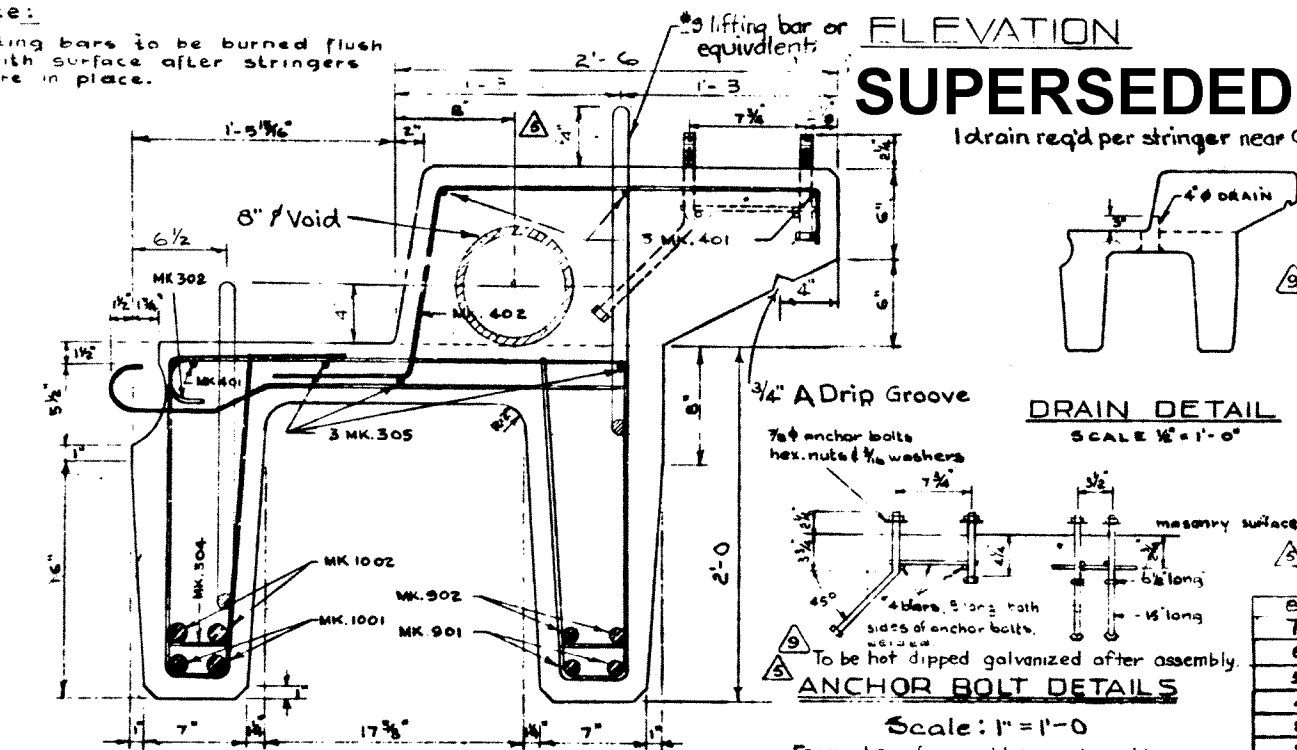
PLAN VIEW
SCALE 3/8" = 1'-0"

NOTE: ALL STRINGERS TO BE BUILT TO 6° SKEW (R.H.F.)



ELEVATION

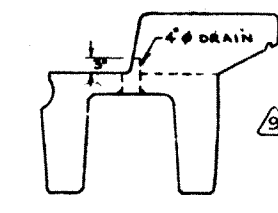
Note: Lifting bars to be burned flush with surface after stringers are in place.



CROSS SECTION
SCALE 1/4" = 1'-0"

SUPERSEDED

1 drain req'd per stringer near 4



DRAIN DETAIL
SCALE 1/2" = 1'-0"

ANCHOR BOLT DETAILS

Scale: 1" = 1'-0"
For number of assemblies and positions see accompanying drawings.

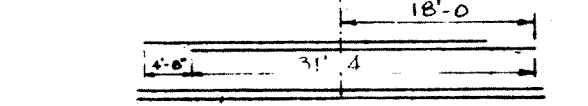
GENERAL NOTES

- All concrete materials shall conform to the current applicable A.S.T.M. specifications.
- Concrete shall be of standard aggregate & shall attain a min. compressive strength of 4000 psi. at 28 days.
- Entrained air shall fall within the limits 5.5% ± 1.0%
- Reinforcing steel shall be intermediate grade conforming to the C.S.A. specification G30.1-1954 or G30.2-1954 & deformed to conform to the requirements of G30.6-1954.
- Loading live load H20-516 of the A.A.S.H.O. 3/5 wheel load to each stringer. Dead load 25 psf. wearing surface.
- Stringers to be cast according to details in this drawing except for special alterations shown on accompanying drawings.

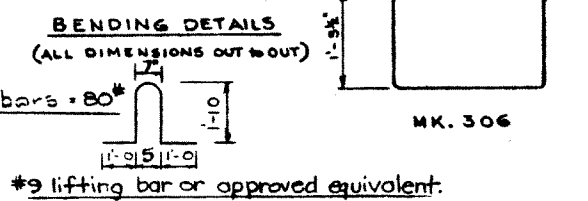
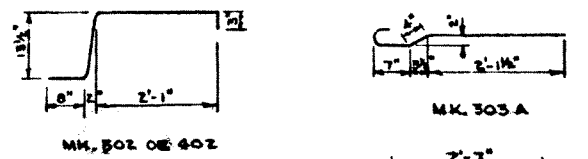
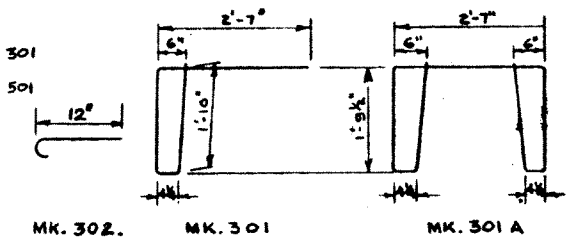
NO.	DATE	DESCRIPTION	BY
8	June 6/60	Correct length for McKenney G.S.	H.H.H.
7	May 23/60	Adapted to New Length	H.H.H.
6	May 10/60	Reinforcement details; Length.	I.L.W.
5	Oct 8/59	Note added anchor bolts, void	RE
4	July 29/59	1002 from 30-10 to 29-B	H.H.H.
3	June 17/59	All bars enlarged 400 psi. comp.	H.H.H.
2	May 20/59	Added lifting bars	F.M.
1	APRIL 8/50	TRACED BY	D.G.L.

STEEL SCHEDULE (CURB STRINGER)						
MARK	SIZE	Nº REQ'D	CUT LENGTH	SKETCH	WEIGHT	REMARKS
301	#3	28	6'-7"			
301A	#3	10	10'-7"		40	
302	#3	51	1'-4"			
303A	#3	60	3'-5"			
304	#3	22	5"	STR.	3	
305	#3	3		DO.		Full Length less 3 1/2"
306	#3	4	9'-3"		14	
401	#4	4	39'-8"	STR.	106	
402	#4	30	4'-2"		84	
501	#5	2	2'-7"	STR.	5	
502	#5	4	4'-2"		17	
901	#9	2		STR.		Full Length less 3 1/2"
902	#9	2	31'-4"	DO.	213	
1001	#10	2		DO.		Full Length less 3 1/2"
1002	#10	2	21'-0"	DO.	255	
TOTAL						

NOTE: FOR MAIN STEEL INTERIOR LEG SEE DWG. NO. S 696



MAIN STEEL ARRANGEMENT EXT. LEG



PRECAST CONCRETE CURB STRINGER TYPE E.K. 40 FT. LOADING H20 516

GOVERNMENT OF THE PROVINCE OF ALBERTA
DEPARTMENT OF HIGHWAYS
BRIDGE BRANCH, EDMONTON

FILE NO. _____ HWY. NO. _____ DWG. NO. **5697A**
LOCATION _____ SCALE _____ SHEET _____ OF _____

SUPERSEDED BY S-811