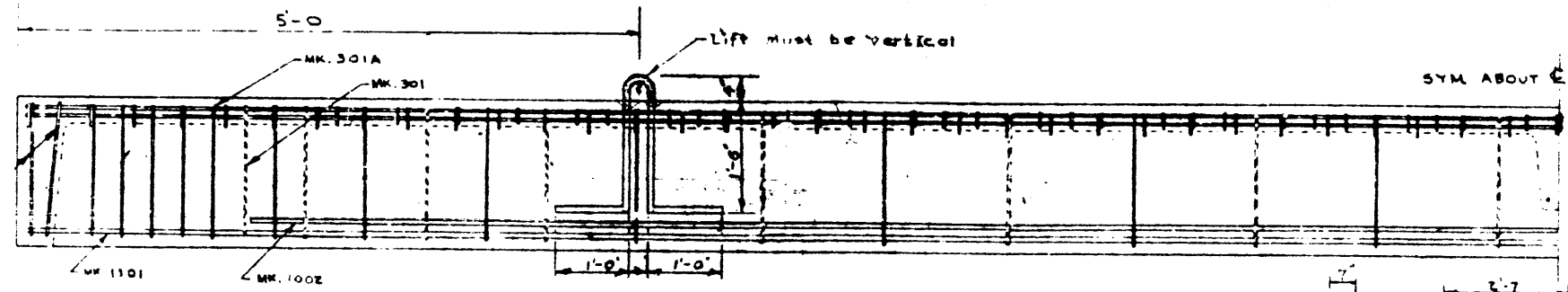
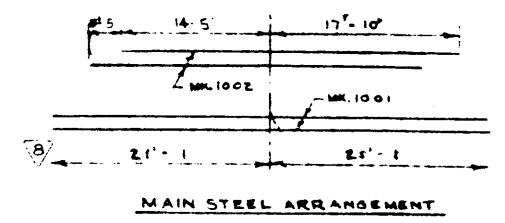
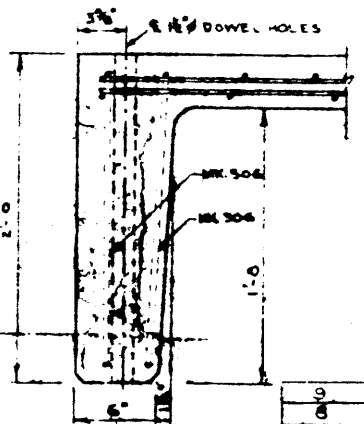
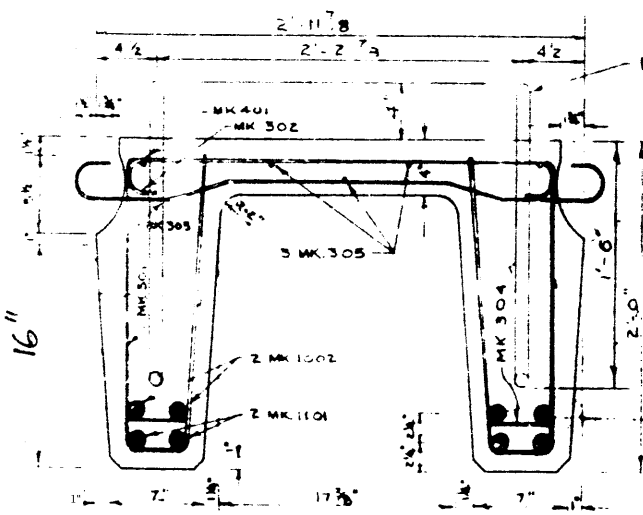
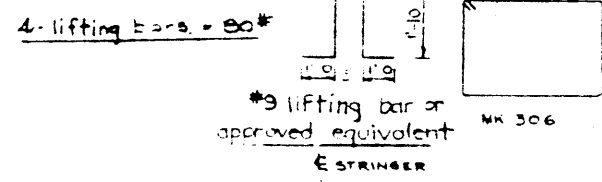


MARK	NO.	SIZE	CUT LENGTH	SKETCH	QTY	REMARKS
301	30	3	6'-7"		74	
302	114	3	1'-4"		57	
303	67	3	4'-1"		103	
304	24	3	5'	STR.	4	
305	3	3	42'-2"	STR.	43	
306	4	3	9'-3"		14	
301A	10	3	10'-0"		40	
401	2	4	42'-2"	STR.	55	
501	2	5	2'-7"	DO		DIAPHRAGM
1101	4	11	42'-2"	DO	33	
1002	4	10	32'-3"	DO	55	
TOTAL					1842	

NOTE ALL STRINGERS TO BE BUILT TO 6° RHF SKEW.



Note: Lifting bars to be burned flush with surface after stringers in place.



GENERAL NOTES

All concrete materials shall conform to the current applicable A.S.T.M. specifications - Concrete shall be of standard aggregate & shall attain a min. compressive strength of 5000 p.s.i. at 28 days. - Entrained air shall fall within the limits 4% ± 0.2%.

Reinforcing steel shall be intermediate grade conforming to the C.S.A. specification G30.1-1954 or G30.2-1954 & deformed to conform to the requirements of G30.6-1954.

Loading live load H20-516 of the A.A.S.H.O. 1/2 wheel load to each stringer. Dead load 25 p.s.f. wearing surface.

Stringers to be cast according to details on this drawing except for special alterations shown on accompanying drawings.

PRECAST CONCRETE STRINGER TYPE E 42 FT. LOADING H20-516

NO.	DATE	DESCRIPTION	BY
9	Mar 2/62	Entrapped bar	W.J.H.
8	June 6/60	Correct length for McKenney G.S.	H.H.H.
7	May 26/60	Adapted to New Length	H.H.H.
6	May 1/59	Reinforcement details; Length.	I.E.W.
5	Oct 7/58	Notes added	R.E.
4	Dec 16/57	Corrected dimensions	I.E.W.
3	June 17/57	Allowed alternate lifting bars	H.H.H.
2	May 19/57	Added lifting bars	R.E.
1	APRIL 6/57	TRACED BY	D.G.L.

GOVERNMENT OF THE PROVINCE OF ALBERTA
 DEPARTMENT OF HIGHWAYS
 BRIDGE BRANCH, EDMONTON

FILE NO. _____ REV. NO. _____ DRAW. NO. 5698A
 LOCATION _____ SCALE _____ SHEET _____ OF _____