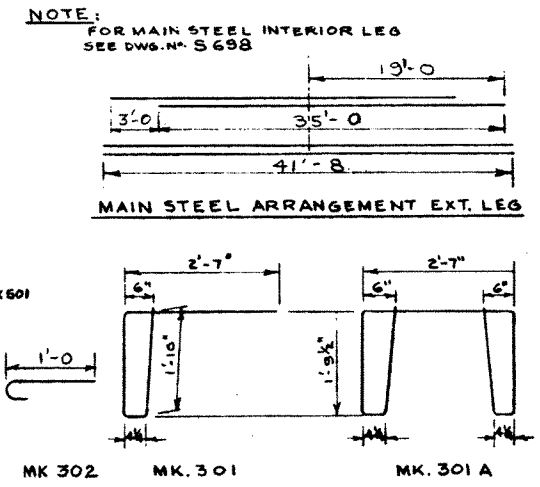
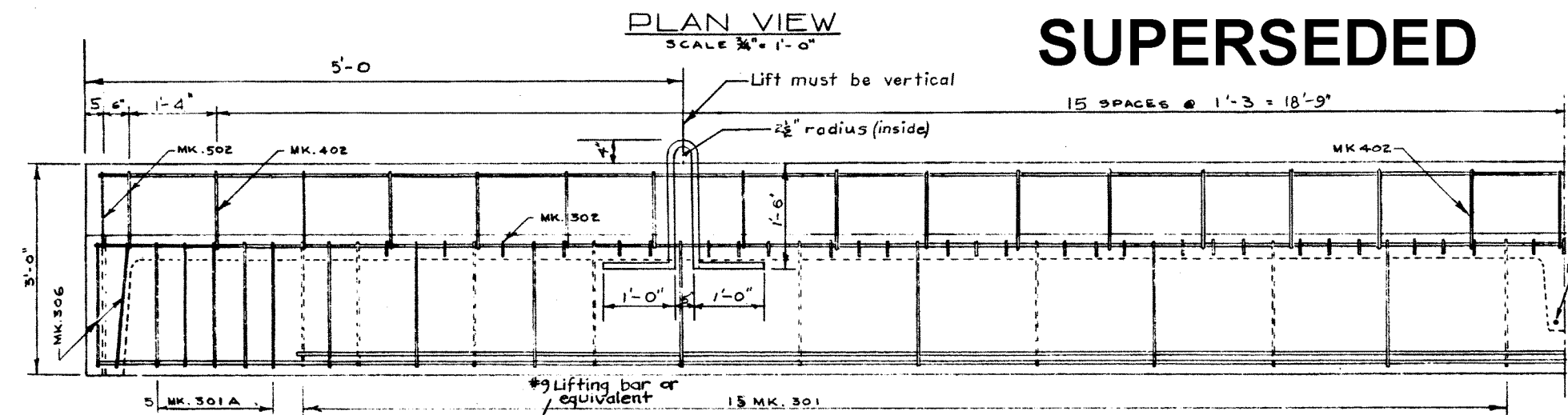
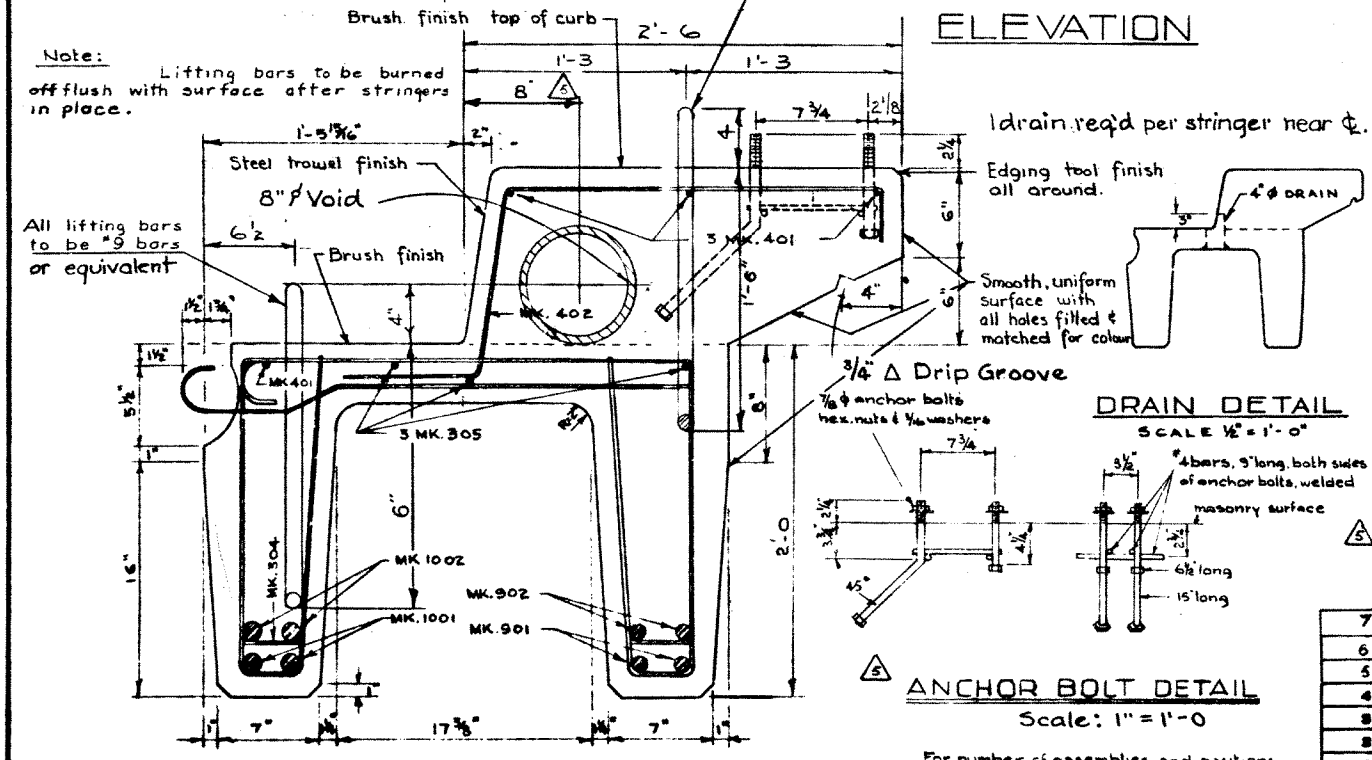


STEEL SCHEDULE (CURB STRINGER)						
MARK	SIZE	N ^o REQD	CUT LENGTH	SKETCH	WEIGHT	REMARKS
301	#3	30	6'-7"		74	
301A	#3	10	10'-7"		40	
302	#3	57	1'-4"		29	
303A	#3	67	3'-4"		84	
304	#3	24	5"	STR.	4	
305	#3	3	41'-8"	DO.	47	
306	#3	4	9'-3"		14	
401	#4	4	41'-8"	STR.	111	
402	#4	31	4'-2"		96	
501	#5	2	2'-7"	STR.	5	
502	#5	4	4'-2"		17	
901	#9	2	41'-8"	STR.	283	
902	#9	2	35'-0"	DO.	238	
1001	#10	2	41'-8"	DO.	358	
1002	#10	2	32'-3"	DO.	277	
TOTAL					1667	



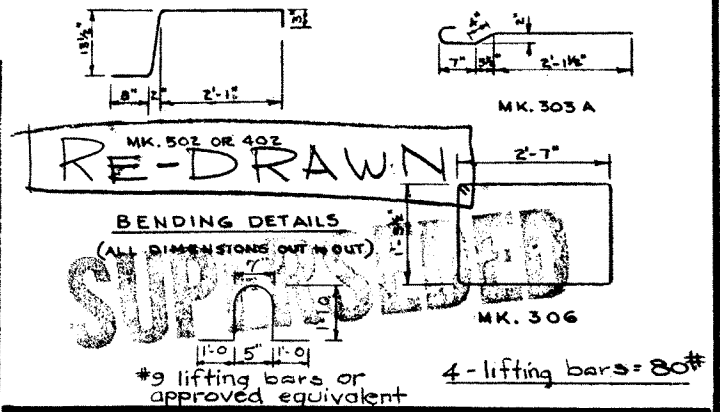
SUPERSEDED

Note: Lifting bars to be burned off flush with surface after stringers in place.



GENERAL NOTES

- All concrete materials shall conform to the current applicable A.S.T.M. specifications.
- Concrete shall be of standard aggregate & shall attain a min. compressive strength of 5000 psi. at 28 days.
- Entrained air shall fall within the limits 3% to 6%.
- Reinforcing steel shall be intermediate grade conforming to the C.S.A. specification G 30.1-1954 or G 30.2-1954 & deformed to conform to the requirements of G36-1954.
- Loading live load H20 - S16 of the A.A.S.H.O. 3/5 wheel load to each stringer. Dead load 25 psf. wearing surface.
- Stringers to be cast according to details on this dwg. except for special alterations shown on accompanying drawings.



NO.	DATE	DESCRIPTION	BY
7	Aug 10/60	Length	I.L.W.
6	May 16/60	Reinforcement details: Length.	I.L.W.
5	Oct 7/59	Note added, anchor bolts, void.	R.E.
4	Oct. 6/59	Correction to Main Steel Arrangement	HHH
3	June 17/59	Allowed alternate lifting bars	HHH
2	May 19/59	Added lifting bars	R.L.C.
1	APRIL 8/59	TRACED BY	D.G.L.

RE-DRAWN

SUPERSEDED

PRECAST CONCRETE CURB STRINGER TYPE E.K. 42 FT. LOADING H20 S16

GOVERNMENT OF THE PROVINCE OF ALBERTA
DEPARTMENT OF HIGHWAYS
BRIDGE BRANCH, EDMONTON

FILE NO. _____ HWY. NO. _____
LOCATION _____ SCALE _____ DWG. NO. 5699
STREAM _____ SHEET _____ OF _____

ANCHOR BOLT DETAIL
Scale: 1" = 1'-0"

For number of assemblies and positions see accompanying drawings.

CROSS SECTION
SCALE 1 1/2" = 1'-0"

PLAN VIEW
SCALE 3/4" = 1'-0"

ELEVATION

DRAIN DETAIL
SCALE 1/2" = 1'-0"