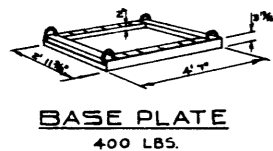
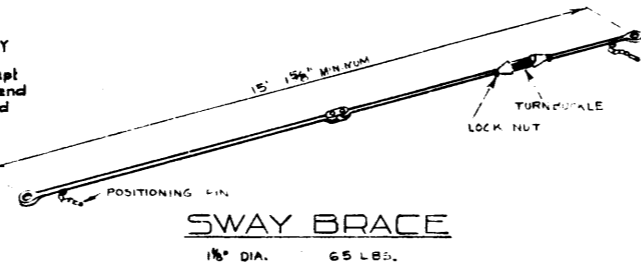
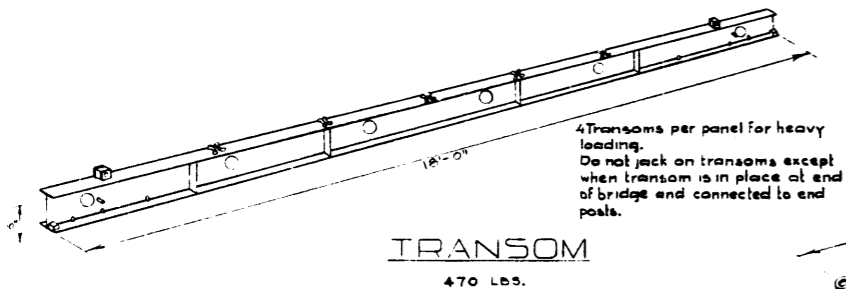
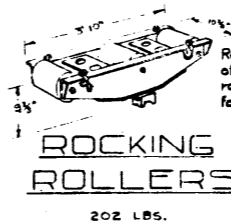
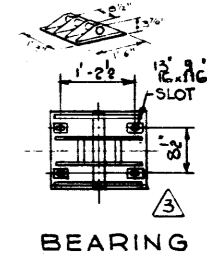
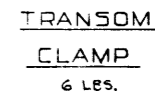
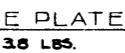
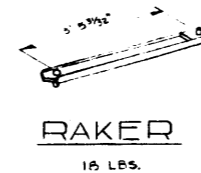
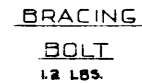
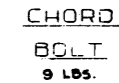
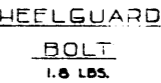
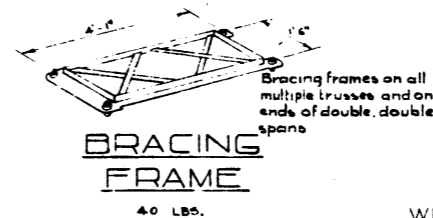
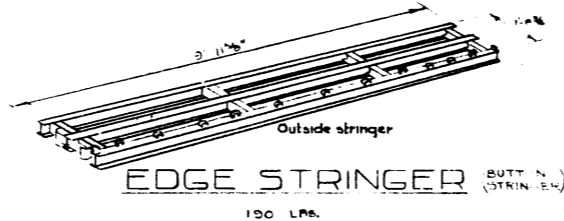
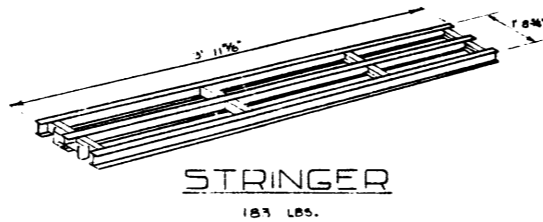
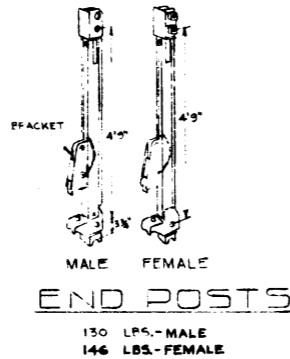
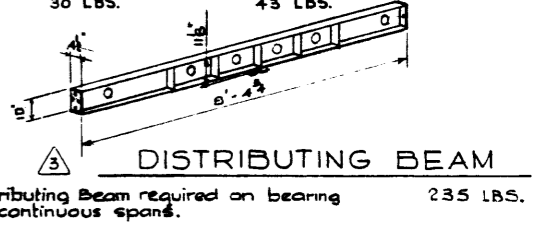
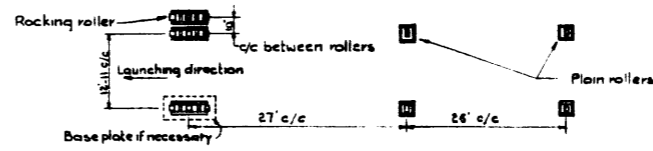


Chord Reinforcements, when used, are attached to all bottom chords for launching. Before connecting end posts remove reinforcements from bottom chords of first and last bays of bridge. All top panel chords should have reinforcements in place when bridge is complete.

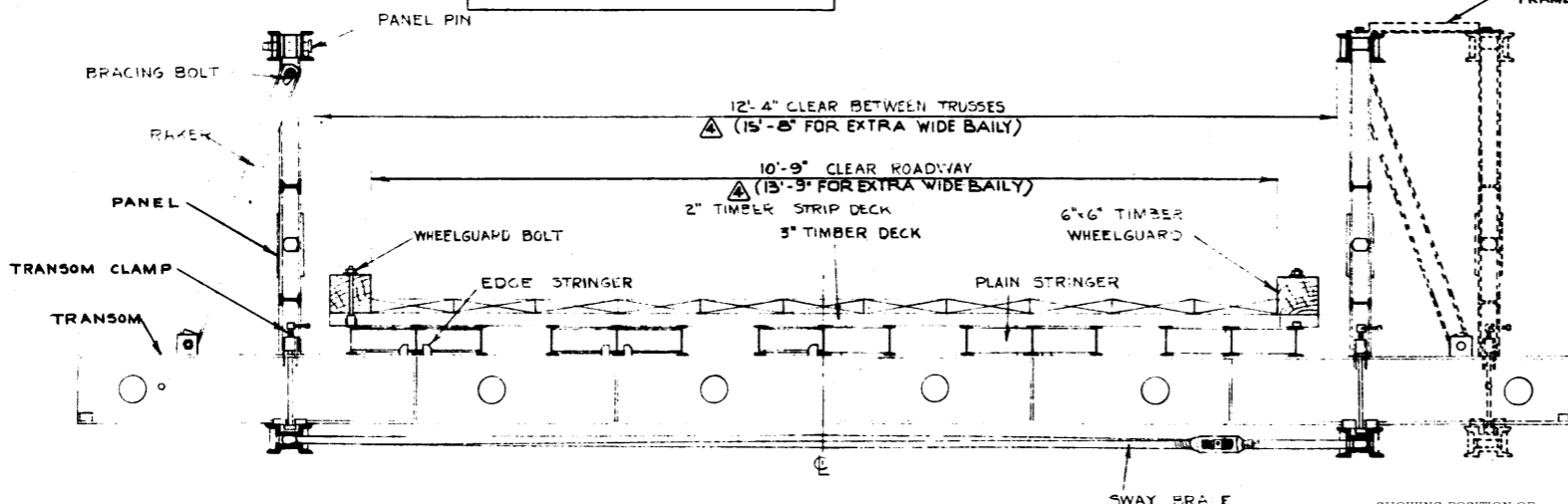


- List of special tools for Bailey erection. Tools to be checked with list attached to lid of box before being returned to Lambton Park.
- 2 - 12" Crescent wrench
 - 2 - 18" Crescent wrench
 - 2 - 24" Pipe wrench
 - 2 - 3/8" plates for running links over rollers.
 - 1 - 1/2" panel pin punch
 - 1 - 3/8" chain with ring & hook
 - 1 - 3/8" ship auger with drill shank
 - 1 - 3/8" ship auger for hand brace
 - 2 - erection bars
 - 1 - 3/4" x 3" steel rod
- Other tools needed for erection.
- 2 - Crow bars
 - 2 - Peavies
 - 2 - Sledge hammers
 - 1 - Nail puller
 - 1 - Cross-cut saw
 - Chains + chain tighteners



ORDER OF ASSEMBLY

1. Panels, female end forward
2. Transom, in front of male end vertical, loosely clamped.
3. Rakers.
4. Sway brace, loosely.
5. Transom, in front of center vertical.
6. Tighten raker.
7. Tighten transom clamps.
8. DO NOT tighten sway brace until construction in next bay is completed.
9. Decking.



SHOWING POSITION OF SECOND TRUSS FOR DOUBLE - SINGLE CONSTRUCTION

DESIGNED BY: DATE: APRIL 23, 1951

DETAILED BY: D.G.L.

CHECKED BY:

NO.	DATE	DESCRIPTION	BY
4	OCT. 31/50	DIMENSIONS FOR E.W. BAILEY	R.W.K.
8	April 1951	Distributing beam added	R.W.K.
8	June 8/51	General revision	R.F.
1	April 7/51	Chord Rein & Double Single	D.G.L.

BAILEY BRIDGE DETAILS

GOVERNMENT OF THE PROVINCE OF ALBERTA
DEPARTMENT OF HIGHWAYS
BRIDGE BRANCH, EDMONTON

FILE NO. _____ BRIDGE NO. _____

LOCATION _____ SCALE _____ DWG. NO. 5700

STREAM _____ SHEET 1 OF 2