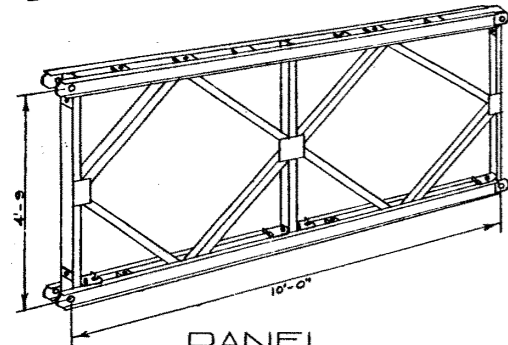
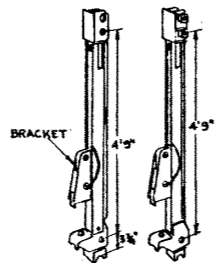


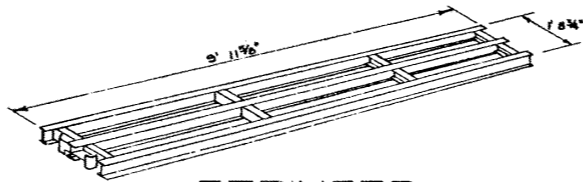
PANEL PIN
1 1/2" DIA. 6 LBS.



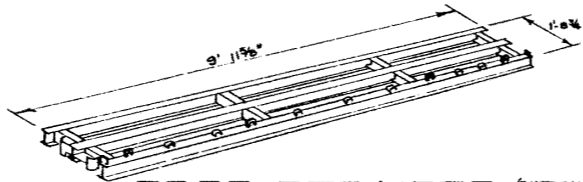
PANEL
603 LBS.
570



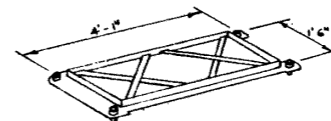
MALE FEMALE
END POSTS
130 LBS. EACH



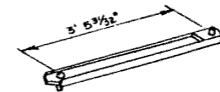
STRINGER
183 LBS.



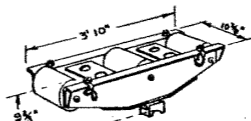
EDGE STRINGER (BOTTOM STRINGER)
190 LBS.



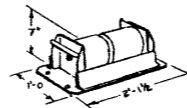
BRACING FRAME
40 LBS.



RAKER
18 LBS.



ROCKING ROLLERS
202 LBS.



ROLLER-PLAIN
105 LBS.



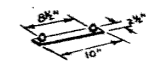
3/4" B.S.W.S. NUT
WHEELGUARD BOLT



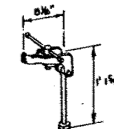
1 1/4" B.S.W.S. NUT & HEAD
CHORD BOLT
8 LBS.



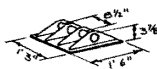
3/4" B.S.W.S. NUT & HEAD
BRACING BOLT
1 LB.



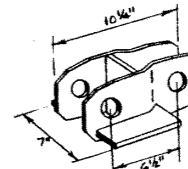
TIE PLATE
3 LBS.



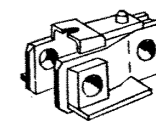
TRANSOM CLAMP
6 LBS.



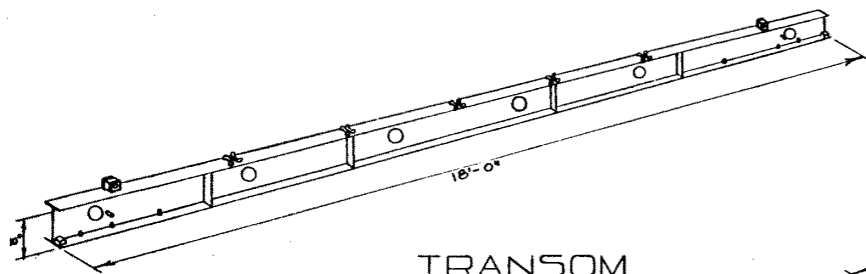
BEARING
70 LBS.



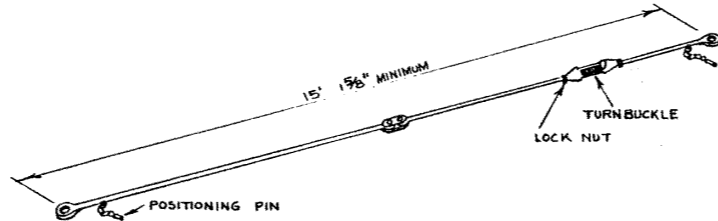
MARK I LINKS, LAUNCHING NOSE
12 LBS.



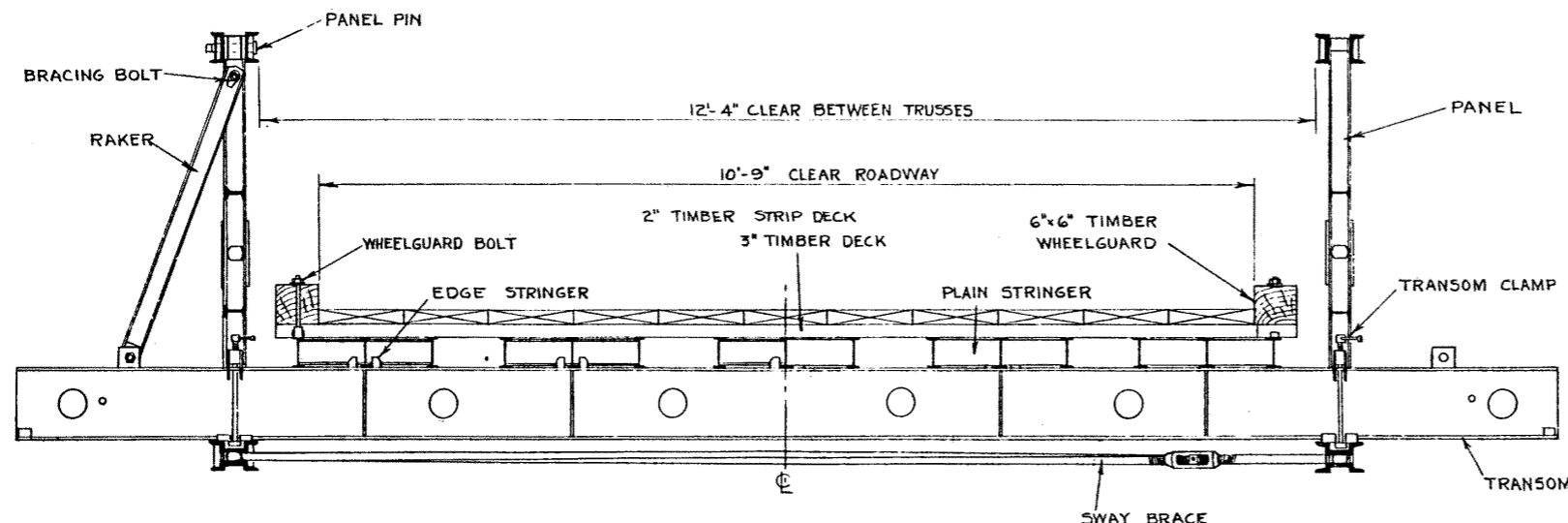
MARK II LAUNCHING NOSE
28 LBS.



TRANSOM
445 LBS.



SWAY BRACE
1 1/8" DIA. 65 LBS.



SECTION THROUGH BAILEY BRIDGE
SCALE 1"=1'-0"

ORDER OF ASSEMBLY

1. Panels.
2. Transom in front of male end vertical, loosely clamped.
3. Rakers.
4. Sway brace, loosely.
5. Transom in front of center vertical.
6. Tighten raker.
7. Tighten transom clamps.
8. DO NOT tighten sway brace until construction in next bay is completed.
9. Decking.

SUPERSEDED

SUPERSEDED

BAILEY BRIDGE
DETAILS



GOVERNMENT OF THE PROVINCE OF ALBERTA
DEPARTMENT OF HIGHWAYS
BRIDGE BRANCH, EDMONTON

NO.	DATE	DESCRIPTION	BY

FILE NO.	HWY. NO.	DWG. NO.
		5700
LOCATION	SCALE	
STREAM	SHEET OF	

DESIGNED BY: D.C.L.
 DATE: APRIL 23, 1959
 CHECKED BY:

AT A.S. RECORDS CENTRE
 1959