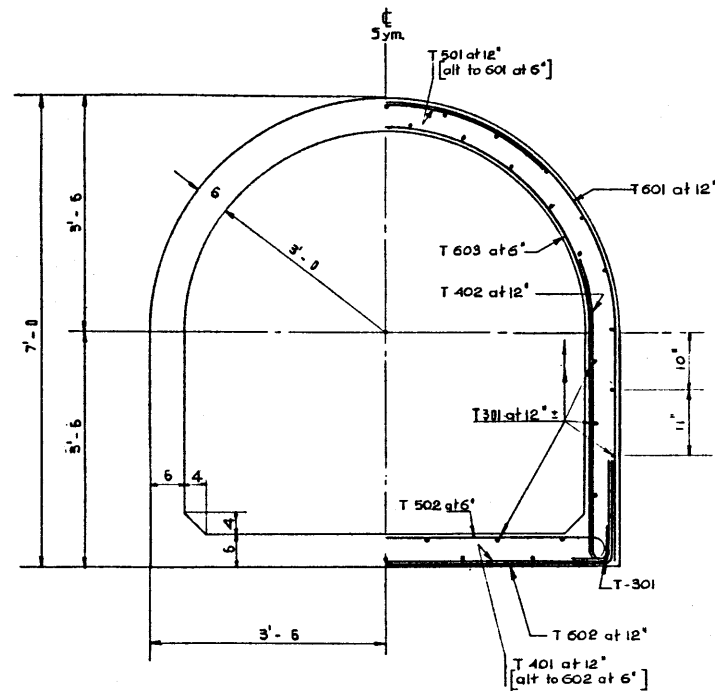
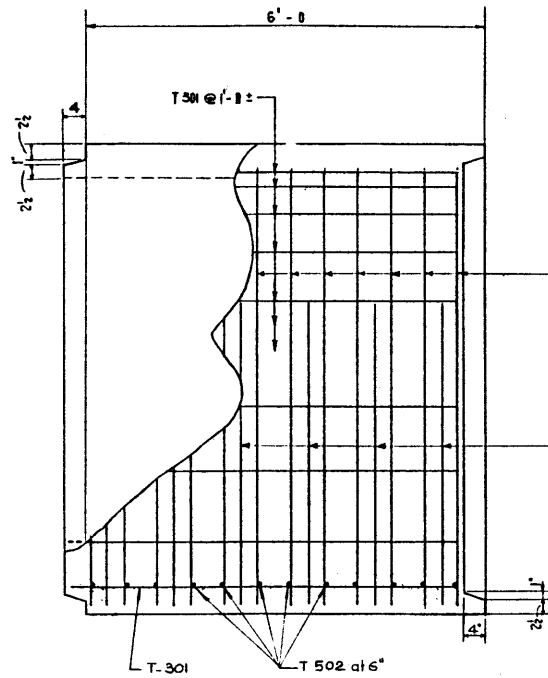


NOTE
Clear cover on all bars
except T301 to be 1" exact

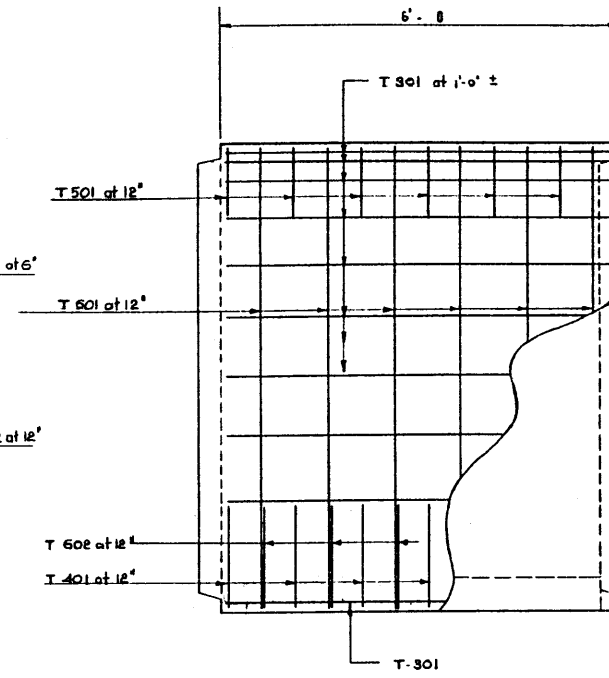


TRANSVERSE SECTION



Reinforcing shown is inside face
of wall and floor.

SIDE ELEVATION



Reinforcing shown is outside face
of wall.

TYPICAL INTERIOR SECTION

GENERAL NOTES

- All concrete materials used shall conform to the current applicable ASTM Specifications.
- Aggregates are to be lightweight.
- Concrete is to attain a strength of 4000 psi at 28 days.
- Entrained air shall fall within the limits 5% to 8%.
- Reinforcing steel shall be intermediate grade conforming to the Specification 6311-1954 or 6312-1954 and deformed to the requirements of 6316-1954 of the C.S.A.
- Test cylinders shall be taken at the rate one per two sections with not less than 2 cylinders for each days pouring.
- Concrete test cylinders shall be tested by an independent testing laboratory. Copies of all test results shall be forwarded to the Bridge Branch.
- Designed according to AASHTO 1957 Specifications for a 1' min. and 3' max. cover and H28-S16-44 loading.

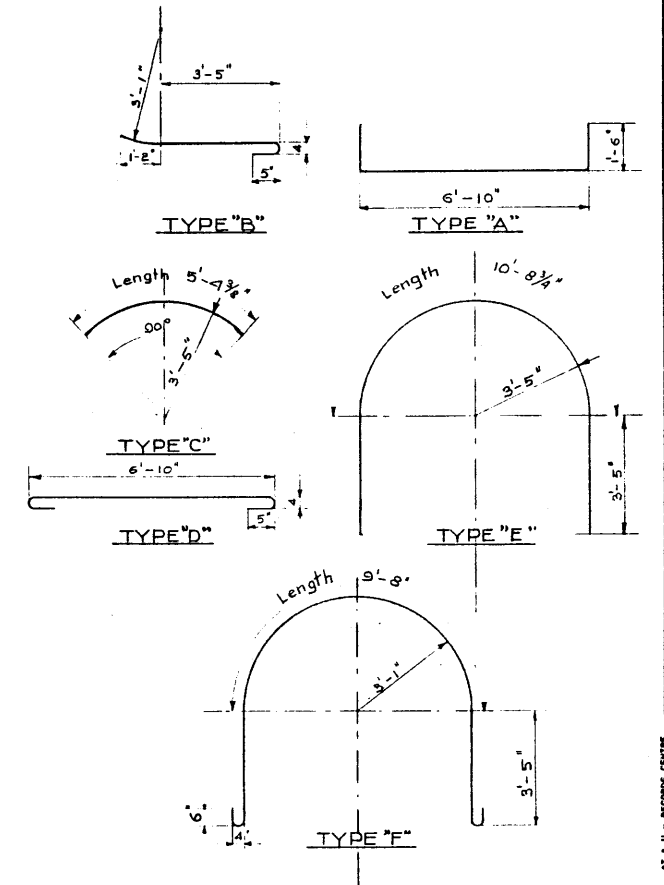
BAR LIST

ONE INTERIOR SECTION

Mark	Size	No	Type	Length	Weight
T301	3	46	Str.	5'-10"	101 *
T401	4	6	A	9'-10"	39 *
T402	4	12	B	5'-4"	45 *
T501	5	6	C	5'-4"	33 *
T502	5	12	D	9'-4"	104 *
T601	6	6	E	17'-6"	158 *
T602	6	6	A	9'-10"	88 *
T603	6	12	F	18'-2"	327 *
Total Weight :					854 *

BAR TYPES (N.T.S.)

All dimensions are out to out.



QUANTITY ESTIMATE

Concrete (4000 psi) - 2.60 cu. yd.
Reinforcing Steel - 894 lb.

6x6 PRECAST CONCRETE
CATTLEPASS
LIGHTWEIGHT CONCRETE

GOVERNMENT OF THE PROVINCE OF ALBERTA
DEPARTMENT OF HIGHWAYS
BRIDGE BRANCH, EDMONTON

FILE NO. _____ HWY. NO. _____ DWG. NO. 5703
LOCATION _____ SCALE 1"=1'-0"
STREAM _____ SHEET 1 OF 1

NO.	DATE	DESCRIPTION	BY
1	Feb 1961	Reinforcing	H.H.H.
REVISIONS			

DESIGNED BY: C.L. Kelak
CHECKED BY: L. Kohlmann
DATE: December 1959

ALL U.S. RECORDS OFFICE
11/19/60