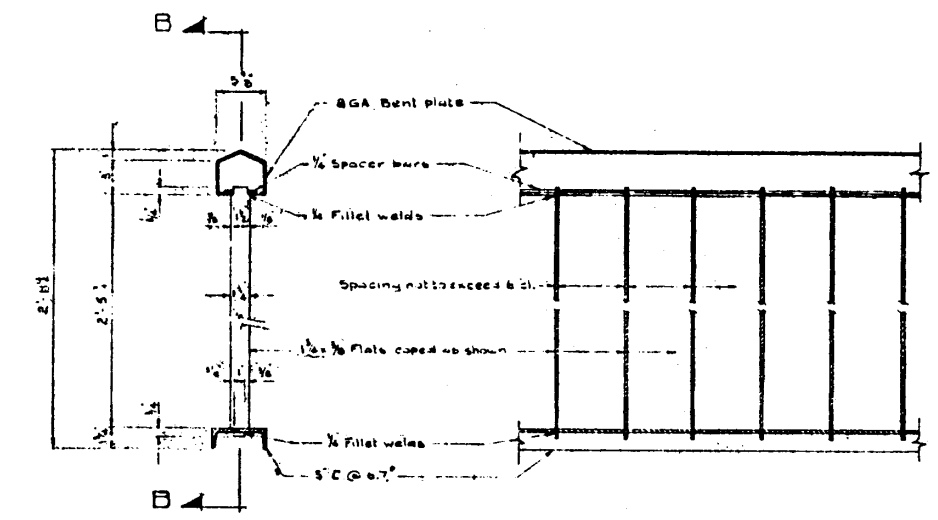
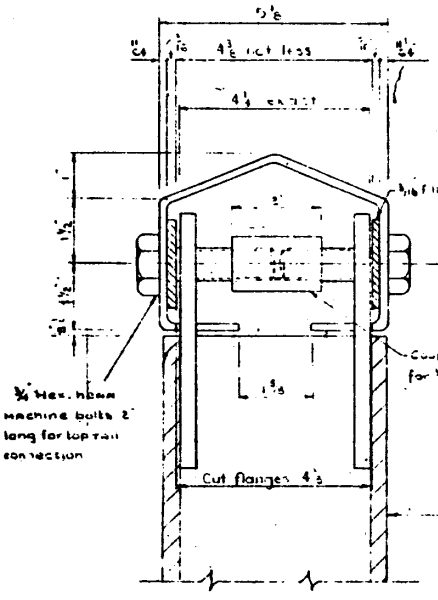


ELEVATION Scale: 1/4"=1'-0"

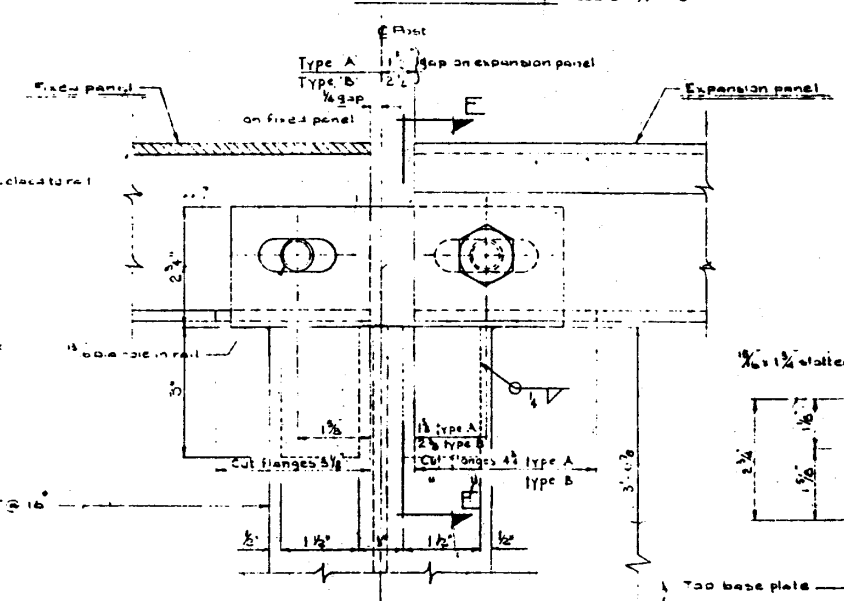


SECTION A-A Scale: 1/4"=1'-0"

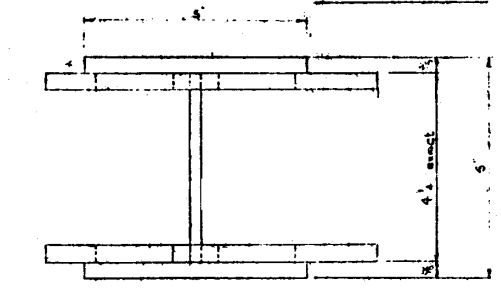
SECTION B-B Scale: 1/4"=1'-0"



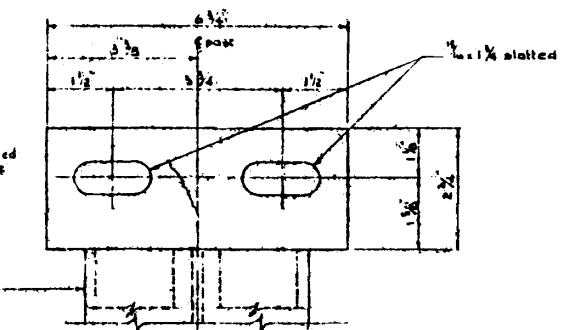
SECTION E-E Scale: Half size



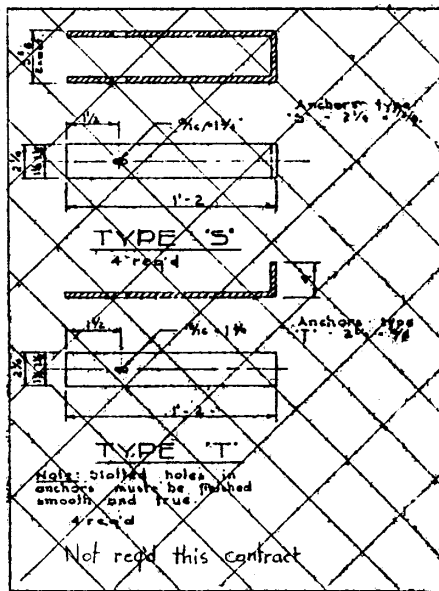
DETAIL C Scale: Half size



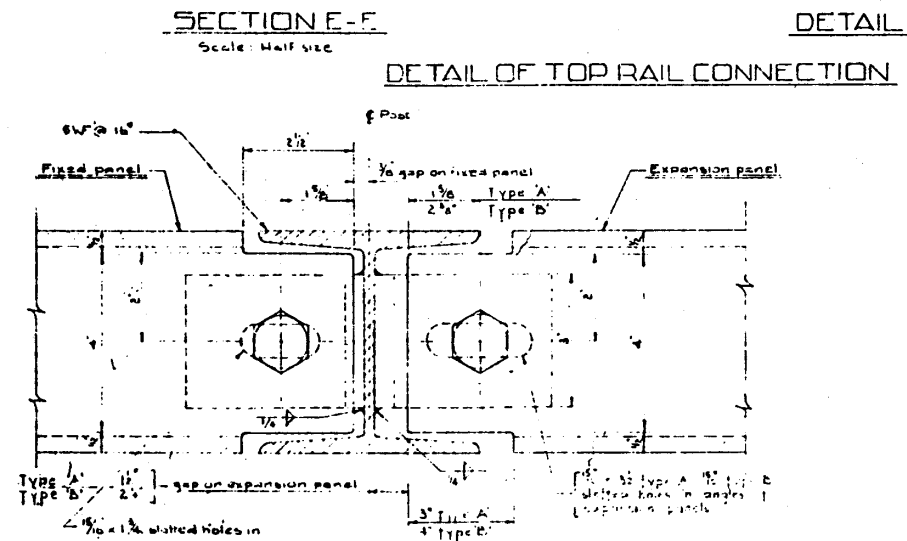
TYP. EXPANSION PANEL POST Scale: Half size



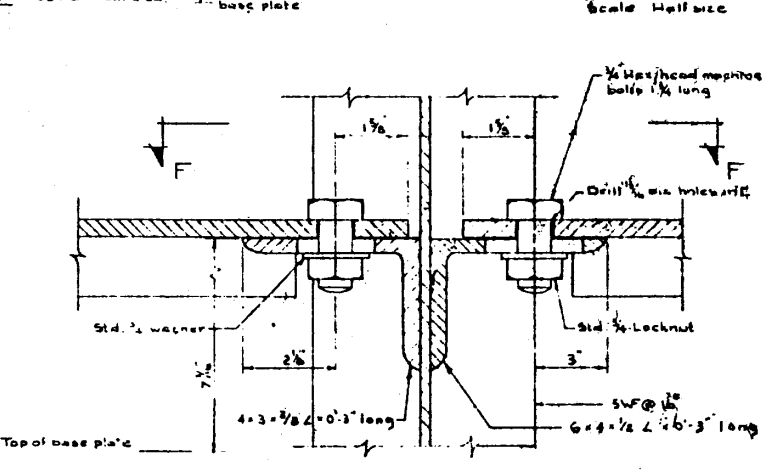
TYP. FIXED PANEL POST Scale: Half size



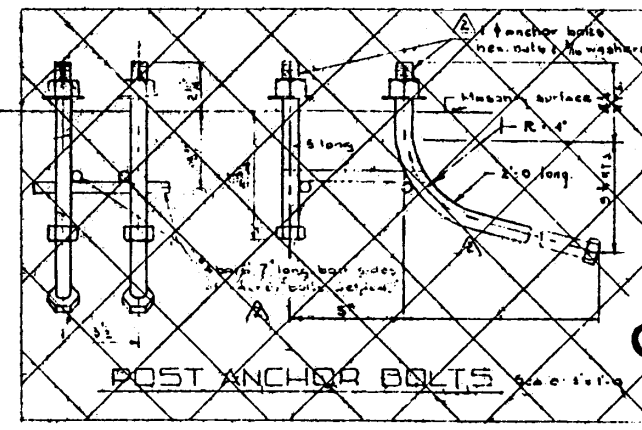
Not used this contract



SECTION F-F Scale: Half size



DETAIL D Scale: Half size



POST ANCHOR BOLTS Scale: 1/2\"/>

Note: Anchor bolt assemblies to be hot dip galvanized after fabrication

Superseded By S-919

GENERAL NOTES

- All steel including bolt heads, nuts and washers to be given one shop coat red lead, iron oxide, zinc chromate primer conforming to the requirements of the Canadian General Specification for Bridge Structures, 1960 Edition, Part 1, Section 1.1.1.
- Steel shall conform to the requirements of the Canadian General Specification for Bridge Structures, 1960 Edition, Part 1, Section 1.1.1.
- AASHTO M-55 (A-7) steel shall conform to the requirements of the Canadian General Specification for Bridge Structures, 1960 Edition, Part 1, Section 1.1.1.

3-6 SIDEWALK VERTICAL BAR TYPE HANDRAIL DETAILS

GOVERNMENT OF THE PROVINCE OF ALBERTA
DEPARTMENT OF HIGHWAYS
BRIDGE BRANCH, EDMONTON

NO.	DATE	DESCRIPTION	BY
1	Dec 13/60	Revision to General Notes	SGV
2	Dec 5/60	Anchorage details	H.H.H.
3	Nov 1/60	This drawing converted to S.I.	H.H.H.

FILE NO. _____ REV. NO. _____ DRAW. NO. _____
LOCATION _____ SCALE: _____ SHOWN _____
STREAM _____ SHEET _____ OF _____

DRAWN BY: Henry H. Henderson
 CHECKED BY: R. E. H. H.
 DATE: Sept 22, 1960