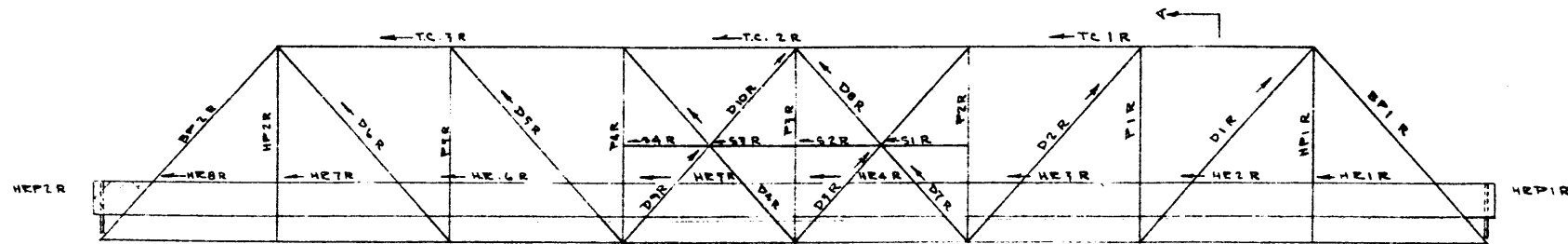
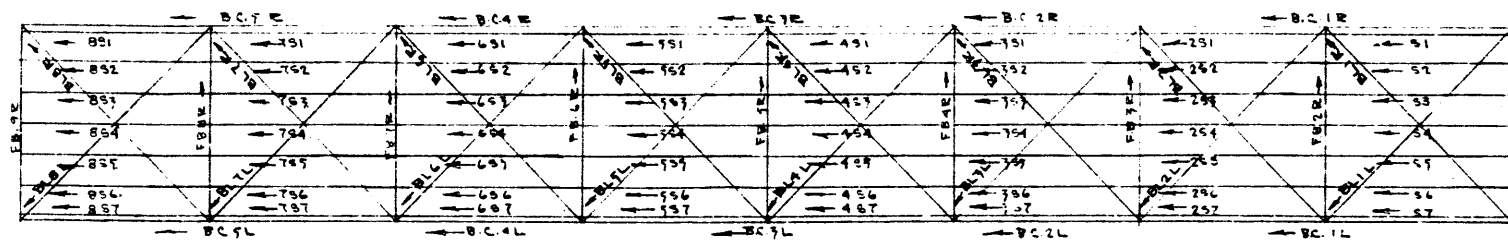


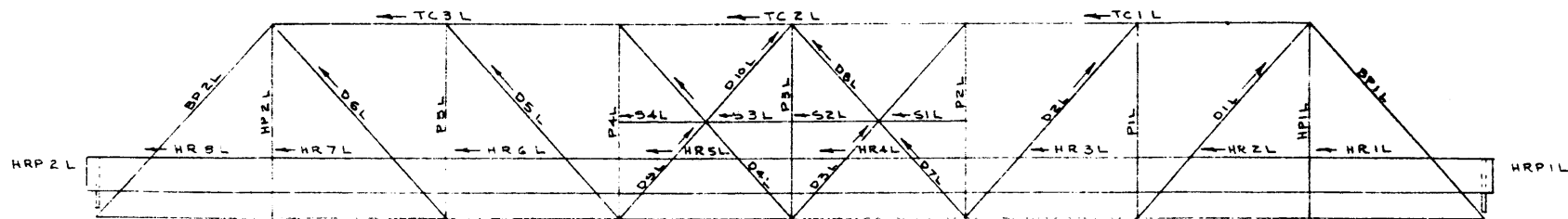
PLAN OF TOP BRACING



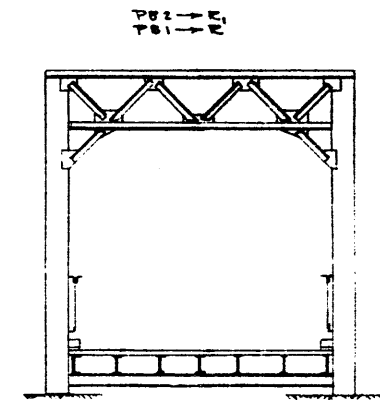
ELEVATION OF RIGHT TRUSS



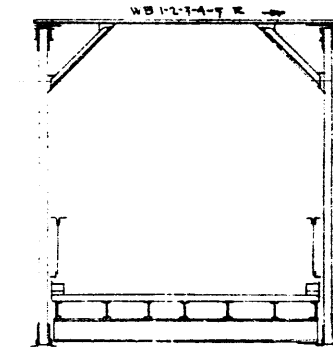
PLAN OF BOTTOM SYSTEM



ELEVATION OF LEFT TRUSS



END VIEW



SECT A-A

- NOTE:
1. Steel members to be marked with arrows and identifying marks before dismantling. Marks to be placed on webs of members where possible marking to start from fixed end in all cases.
 2. Dismantling can start from either end and it is to be noted which end, fixed or expansion.
 3. Dismantling crew is to remove all cut rivets.
 4. Laterals and Diagonals to be separated.
 5. End Handrail Posts to be removed.
 6. Steel members to each be marked with the bridge file number.

DESIGNED BY: RLF
 DATE: DEC 9 1957
 CHECKED BY:

NO.	DATE	DESCRIPTION	BY
1	OCT 75	ADDITION TO NOTE 1, FIXED END U/D	KJD

DISMANTLING AND ERECTION DIAGRAM FOR TYPICAL STEEL TRUSS

GOVERNMENT OF THE PROVINCE OF ALBERTA
DEPARTMENT OF HIGHWAYS
BRIDGE BRANCH, EDMONTON

FILE NO.	REV. NO.		
LOCATION	SCALE		
STREAM	SHEET	OF 5-735	