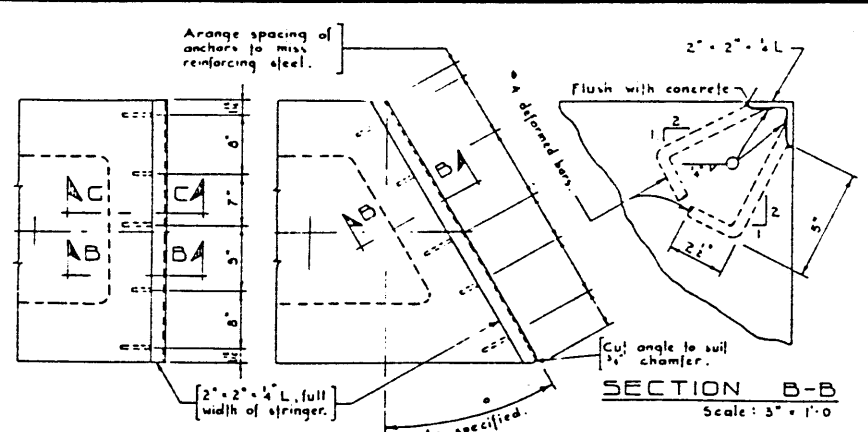
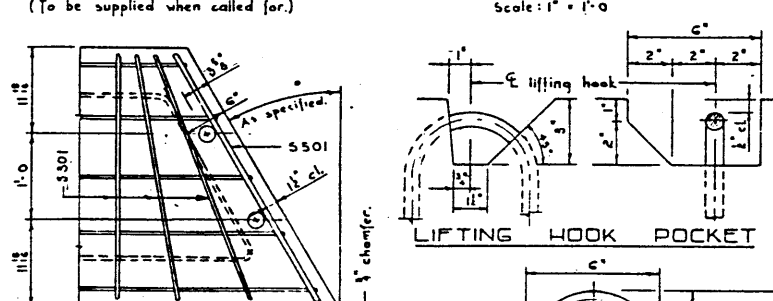


**PLAN**  
Scale: 1" = 1'-0"

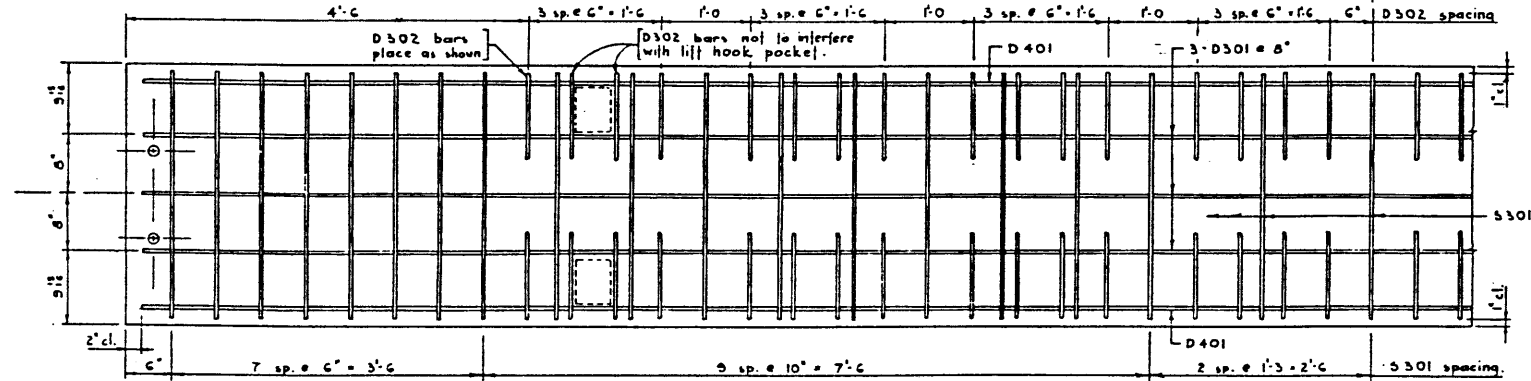


**SQUARE STRINGER**    **SKewed STRINGER**

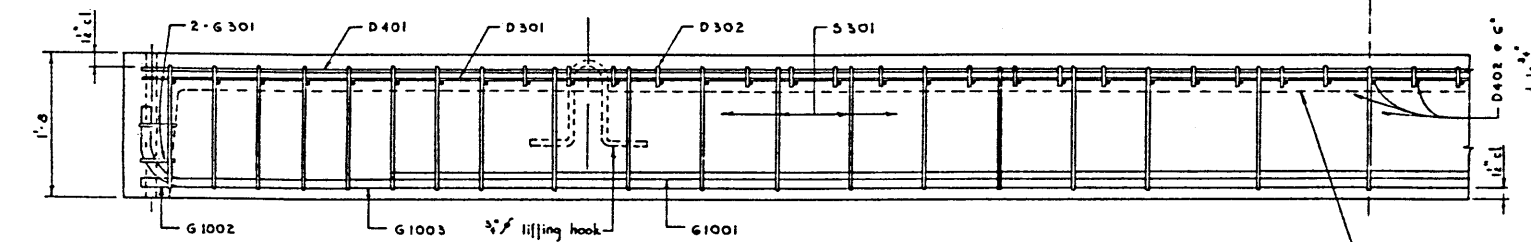
**PROTECTION ANGLE DETAILS**  
(To be supplied when called for.)



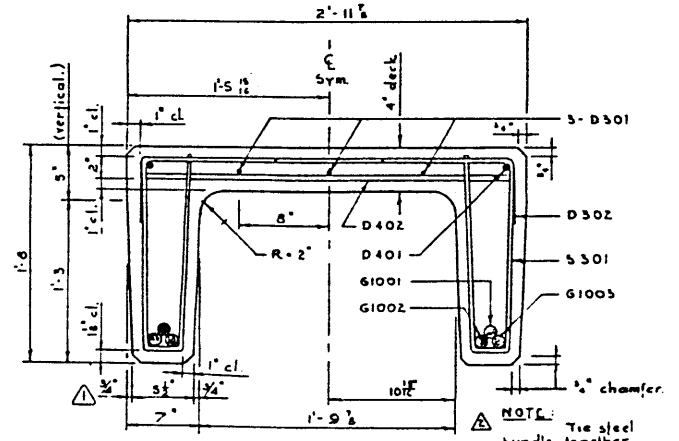
**SKEW STRINGER**  
Scale: 1" = 1'-0"



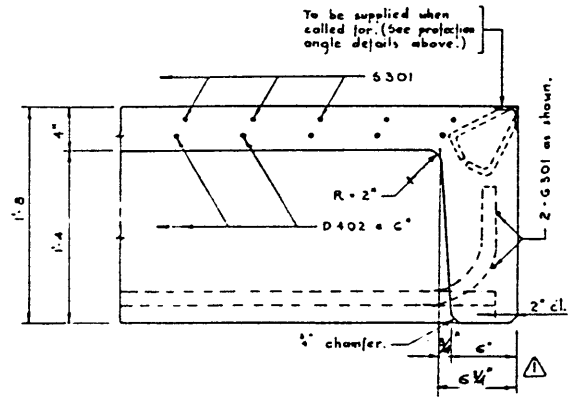
**REINFORCEMENT PLAN**  
Scale: 1" = 1'-0"



**REINFORCEMENT ELEVATION**  
Scale: 1" = 1'-0"



**SECTION A-A**  
Scale: 1 1/2" = 1'-0"

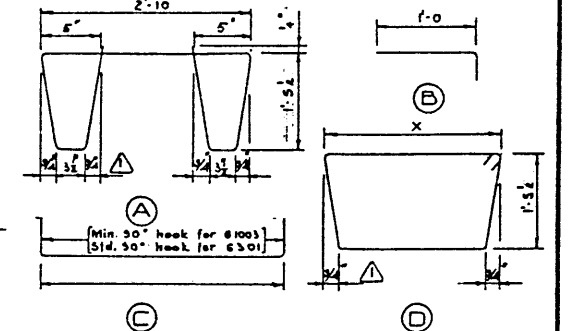


**SECTION C-C**  
Scale: 1 1/2" = 1'-0"

Mark	Size	No.	Type	X'	Length	Weight
5	301	3	S7	A	9'-4"	130
0	301	1	S7	B	27'-8"	31
0	302	1	G4	B	1'-5"	34
G	301	3	C	2-5	3'-8"	6
D	401	4	2	S7	27'-8"	37
0	402	4	55		2'-8"	38
G	1001	10	2		22'-0"	182
G	1002	10	2	S7	27'-8"	238
G	1003	10	2	C	27'-8"	250
5	301	3	2	D		

• for skewed stringer only. Total lbs. 1,013

**BAR TYPES**  
(All bar dimensions are out to out.) N.T.S.



**GENERAL NOTES**

- DESIGN:**
- A.A.S.H.O 1957 where applicable.
  - Loading H20-516-44 full dead load.
- MATERIALS:**
- All concrete materials shall conform to A.S.T.M. specifications.
  - Concrete shall be of light weight aggregate with max. size of 1/2". Min. compressive strength shall be 4500 p.s.i. at 28 days. Entrained air shall fall between the limits of 5.3-6.0%.
  - Reinforcing steel shall be of intermediate grade conforming to the C.S.A. specification G 30.1 - 1954 or G 30.2 - 1954, and deformed steel to conform to G 30.6 - 1954.
- FABRICATION:**
- Concrete must reach 30% of the required 28 day compressive strength before stripping and lifting.
  - Concrete must reach 65% of the required 28 day compressive strength before shipping.
  - Each girder shall have a poured camber of 3/4".
  - All acute corners on skewed girders to have 3/4" chamfer.
  - Diameters of all bends shall conform to the recommended minimums, and all hooks, unless otherwise noted, shall conform to the recommended sizes detailed in the A.C.I. Manual of Standard Practice for Detailing Reinforced Concrete Structures.
  - Concrete test cylinders shall be tested by an independent testing laboratory, copies of all test results shall be forwarded to the Bridge Branch.
  - Tests shall be taken at the rate of one cylinder for each two stringers with not less than two cylinders for each day's pouring.
- All stringers used on main highways shall have standard weight concrete.
- Allowance has been made for 25 p.s.f. wearing surface on standard weight stringers.

Estimated Weight per unit 8,255 lbs.

**PRECAST CONCRETE**  
**28 FT. SPAN, TYPE "H"**  
**INTERIOR STRINGER**

GOVERNMENT OF THE PROVINCE OF ALBERTA  
DEPARTMENT OF HIGHWAYS  
BRIDGE BRANCH, EDMONTON

NO.	DATE	DESCRIPTION	BY
1	Dec 16, 51	Try was fact weld	R.E.
2	March 25, 52	Dimensions Section A-A, Bar 'A' and 'D'	R.E.

FILE NO. \_\_\_\_\_ HWY. NO. \_\_\_\_\_ DWG. NO. 5736  
LOCATION \_\_\_\_\_ SCALE \_\_\_\_\_ SHOWN \_\_\_\_\_  
STREAM \_\_\_\_\_ SHEET \_\_\_\_\_ OF \_\_\_\_\_

DESIGNED BY R.E.B. DATE January 1951  
DETAILED BY Gordon V. Savicki DATE 31 January 1951  
CHECKED BY R.E.B. DATE Feb. 1951