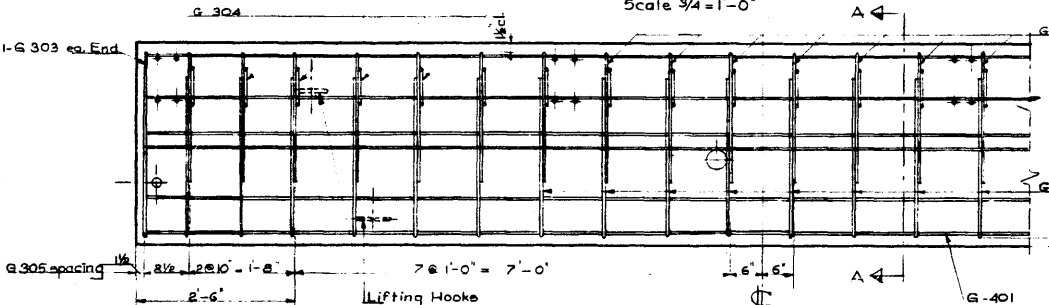
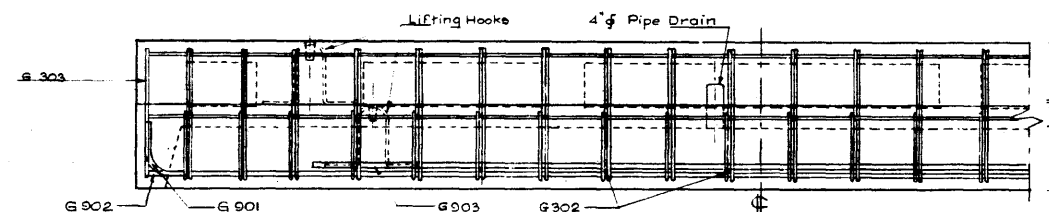


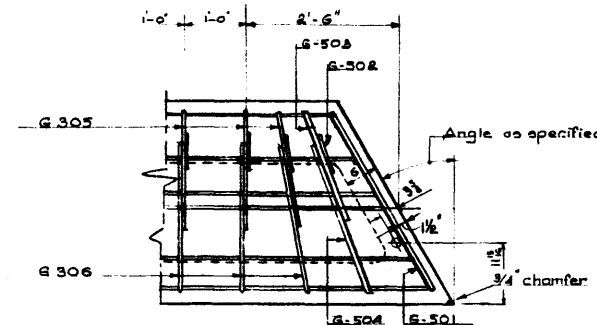
PLAN VIEW
 Scale 3/4" = 1'-0"



REINFORCEMENT PLAN
 Scale 3/4" = 1'-0"

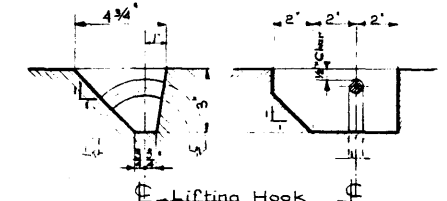


REINFORCEMENT ELEVATION
 Scale 3/4" = 1'-0"



SKIEW STRINGER
 Scale 3/4" = 1'-0"

All other details to conform to those shown for square stringers. On skewed stringers lifting hooks are to be placed G-5 from centre midpoint of the unit. (7'-1 on top curb).



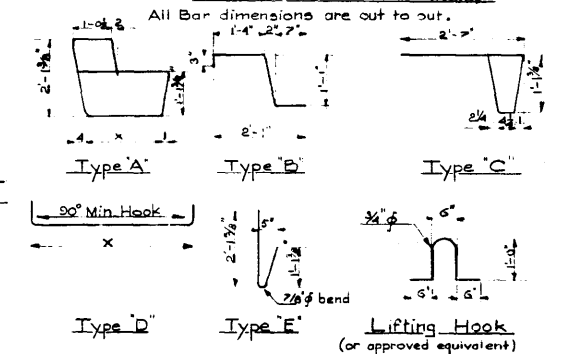
LIFTING HOOK POCKET
 Scale 3" = 1'-0"

BAR LIST

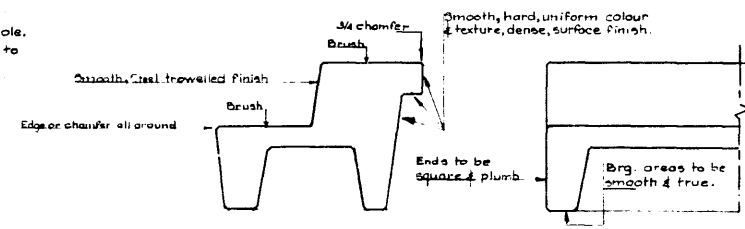
MARK	SIZE	NUMBER	TYPE	X	LENGTH	WEIGHT
G 301	3	6	Str.		19'-8"	44 lb
G 302	3	8	Str.		0'-5"	1 "
G 303	3	2	A	2'-4"	10'-7"	8 "
G 304	3	20	E		8'-4"	25 "
G 305	3	20	B		3'-3"	24 "
G 306	3	20	C		5'-1"	29 "
G 401	4	1	Str.		10'-8"	13 "
G 501	5	2	A			
G 701	7	1	D	10'-8"	20'-7"	42 "
G 901	9	1	D	10'-8"	20'-10"	71 "
G 902	9	1	Str.		19' 8"	67 "
G 903	9	1	Str.		14' 6"	49 "
G 502	5	2	E			
G 503	5	2	B			
G 504	5	2	C			
Total						383 lbs

*For Skewed Stringers only.
 @For Skewed Stringers two less required.

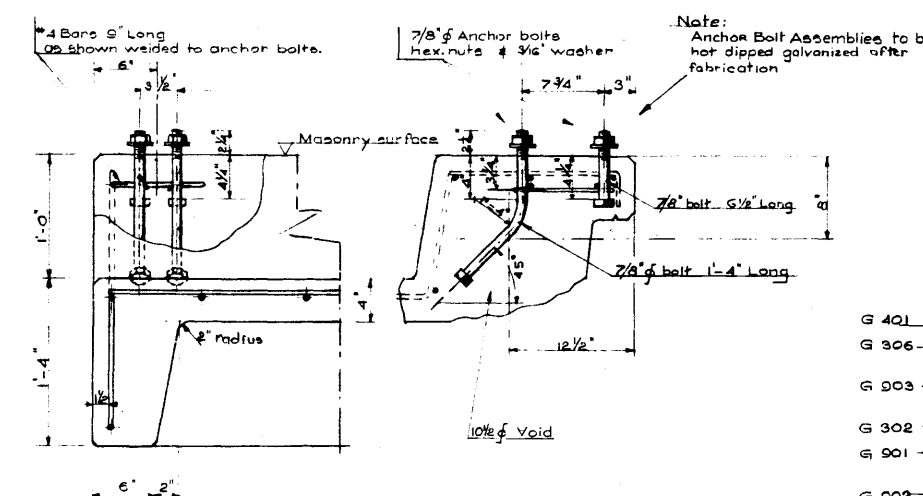
BAR TYPES (NTS)



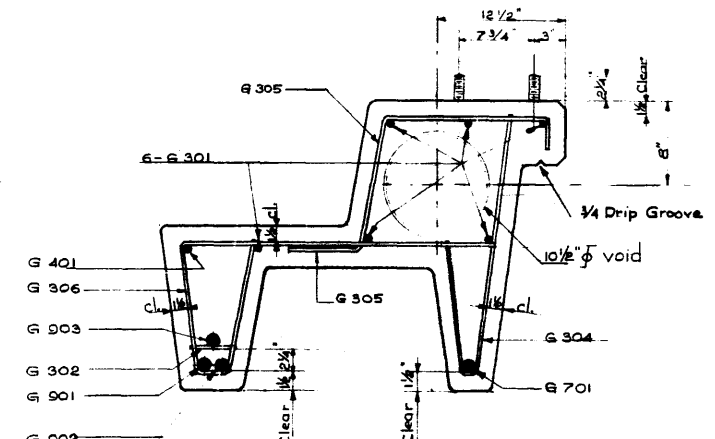
STRINGER FINISHES



Scale 3/4" = 1'-0"



ANCHOR BOLT DETAIL
 Scale 1/2" = 1'-0"



SECTION A-A
 Scale 1/2" = 1'-0"

GENERAL NOTES:

- DESIGN
 • AASHTO, 1957 where applicable.
 • Loading H20-516-44 + full dead load.
- MATERIALS
 • All concrete materials shall conform to ASTM specifications.
 • Concrete shall be of standard weight aggregate with max size of 3/4". Min compressive strength shall be 4000 p.s.i at 28 days. Entrained air shall fall between the limits of 3% & 6%.
 • Reinforcing steel shall be of intermediate grade conforming to the C.S.A specification G 30.1-1954 or G 30.2-1954 and deformed steel to conform to G 30.6-1954.
- FABRICATION
 • Concrete must reach 30% of the required 28 day compressive strength before stripping and lifting.
 • Concrete must reach 65% of the required 28 day compressive strength before shipping.
 • Each girder shall have a poured chamfer of 1/2".
 • All acute corners on skewed girders to have 3/4" chamfer.
 • Diameters of all bends shall conform to the recommended minimums, and all hooks, unless otherwise noted, shall conform to the recommended sizes detailed in the A.C.I. Manual of Standard Practice for Detailing Reinforced Concrete Structures.
 • Concrete test cylinders shall be tested by an independent testing laboratory, copies of all test results shall be forwarded to the Bridge Branch.
 • Tests shall be taken at the rate of one cylinder for each two stringers with not less than two cylinders for each days pouring.

DATE 18
 DESIGNED BY
 CHECKED BY
 DATE Jan. 1961
 DATE Feb. 1961

PRECAST CONCRETE
 20FT. SPAN TYPE "GR"
 CURB STRINGER

GOVERNMENT OF THE PROVINCE OF ALBERTA
 DEPARTMENT OF HIGHWAYS
 BRIDGE BRANCH, EDMONTON

FILE NO. HWY. NO. DWG. NO.
 LOCATION SCALE AS SHOWN 5-743
 SHEET OF

NO.	DATE	DESCRIPTION	BY

REVISIONS