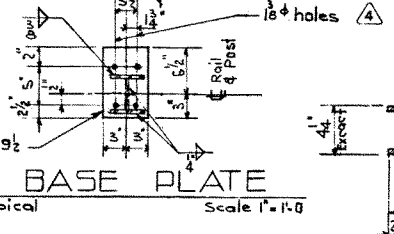
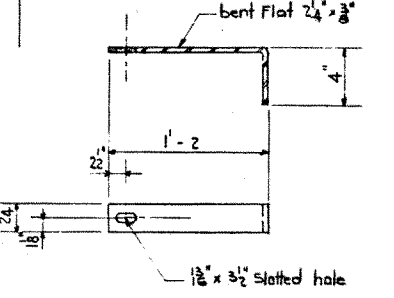


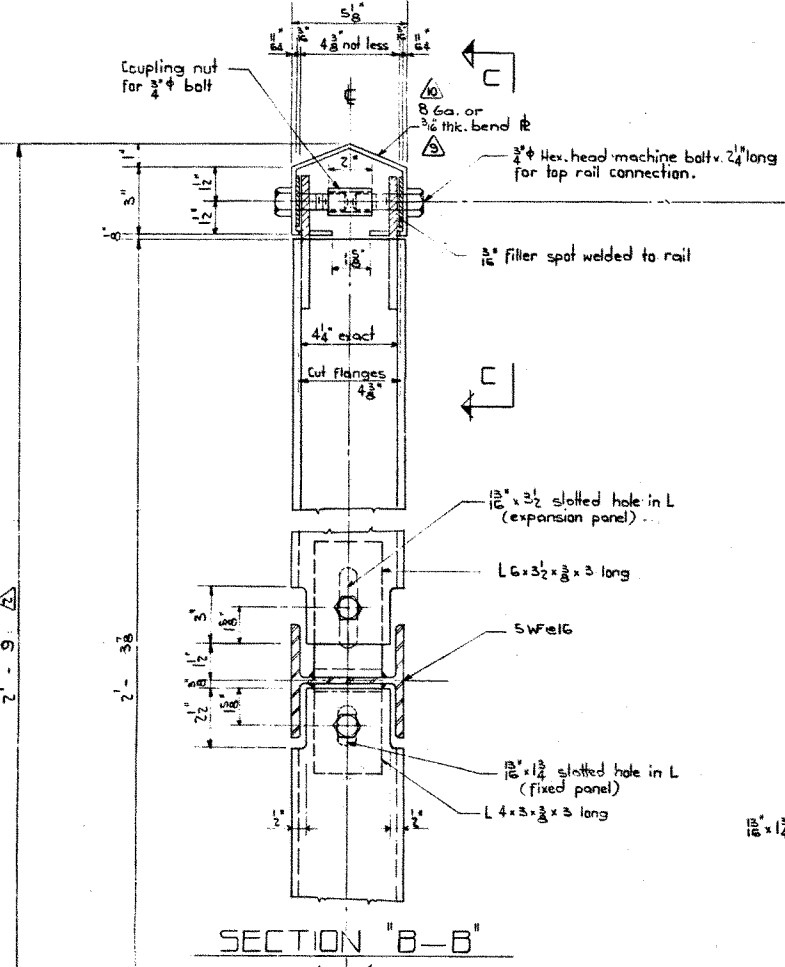
"PART ELEVATION"  
Scale 1"=1'-0"



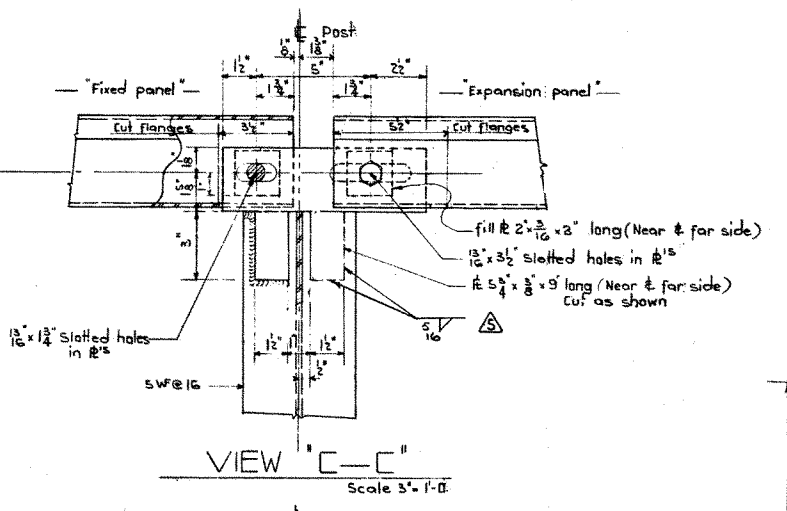
BASE PLATE  
Scale 1"=1'-0"



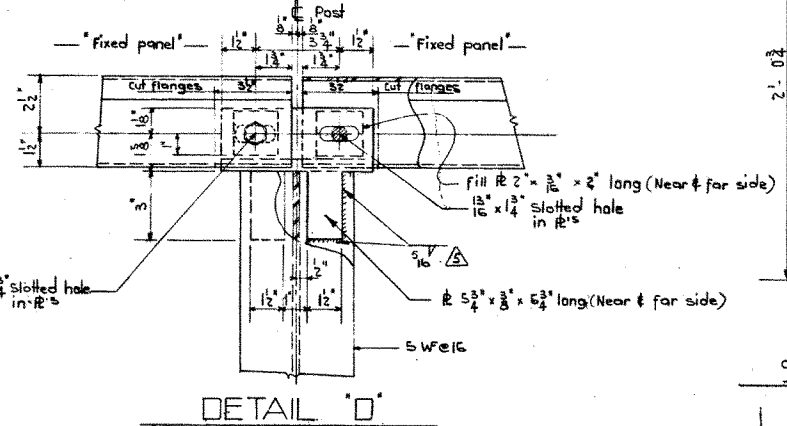
ANCHOR TYPE "S"  
Scale 1 1/2"=1'-0"



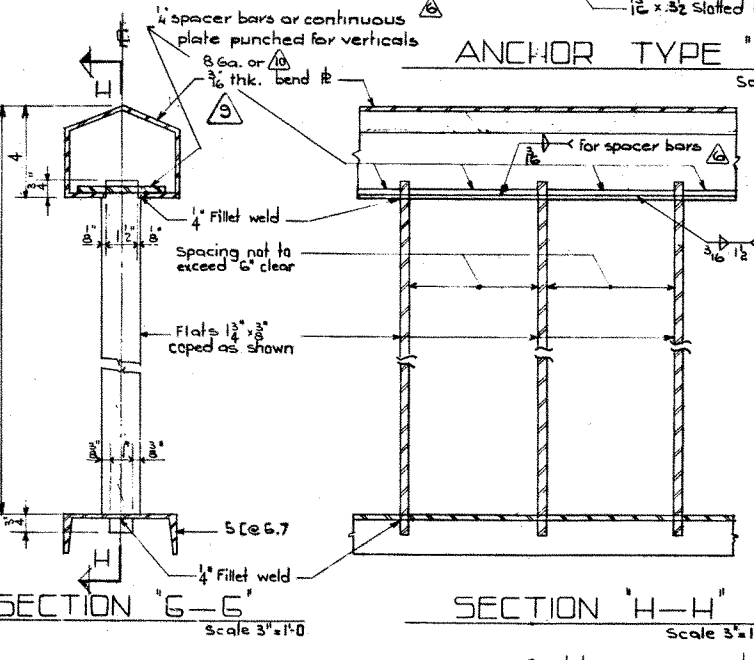
SECTION "B-B"  
Scale 3/4"=1'-0"



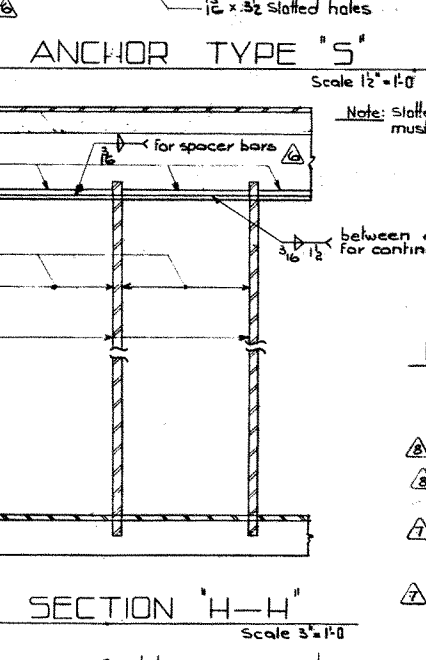
VIEW "C-C"  
Scale 3/4"=1'-0"



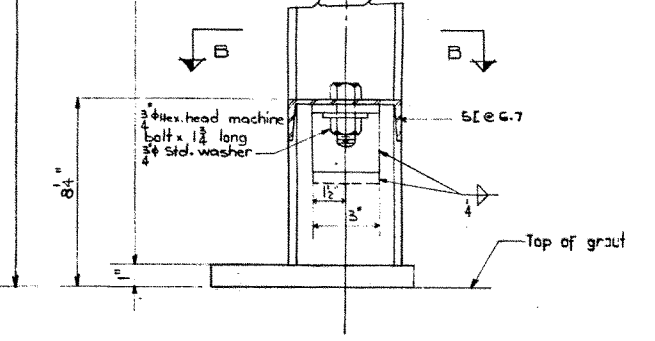
DETAIL "D"  
Scale 3/4"=1'-0"



SECTION "G-G"  
Scale 3/4"=1'-0"

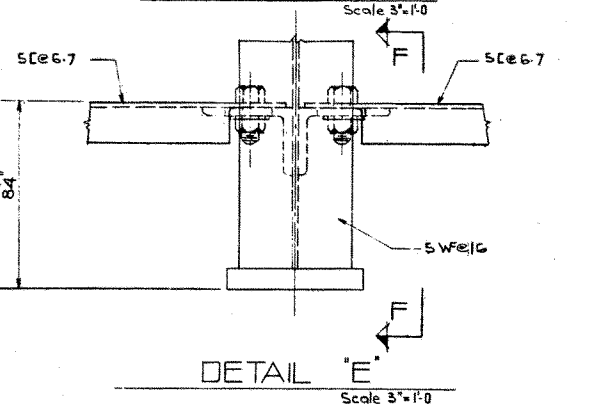


SECTION "H-H"  
Scale 3/4"=1'-0"

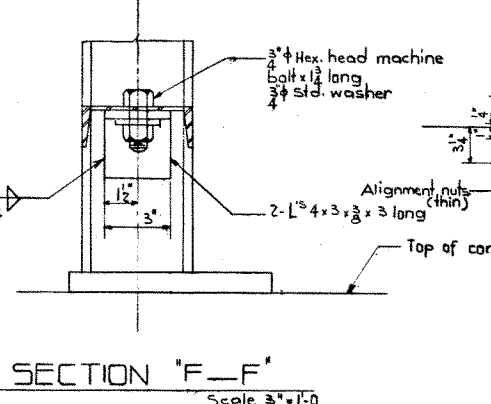


SECTION "A-A" as shown  
Scale 3/4"=1'-0"

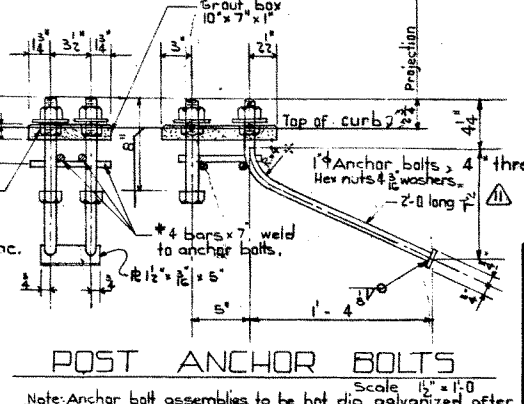
SECTION "A-A" same as shown except base projects to the right.



DETAIL "E"  
Scale 3/4"=1'-0"



SECTION "F-F"  
Scale 3/4"=1'-0"



POST ANCHOR BOLTS  
Scale 1 1/2"=1'-0"

Note: Anchor bolt assemblies to be hot dip galvanized after fabrication.

- GENERAL NOTES:**
- All handrail and posts to be given one shop coat red lead iron oxide, oil alkyl type paint conforming to the requirements of the Canadian Government Specification Board Specification I-GP-140 A.
  - All steel shall conform to the current A.S.T.M. Specification A36.
  - All steel shall be to be drawn on the shop drawing.
  - Fabrication is to be in accordance with the AASHO Specifications for Highway Bridges, 1961 edition.
  - The Fabricator shall submit shop drawings and they shall be approved by the Department before fabrication is started. The checking of shop drawings is to be considered as assisting the Fabricator and shall not relieve him of responsibility for error or omissions.

**SUPERSEDED**  
with DWG 917

2'-9 HIGHWAY  
VERTICAL BAR TYPE  
HANDRAIL DETAIL

GOVERNMENT OF THE PROVINCE OF ALBERTA  
DEPARTMENT OF HIGHWAYS  
BRIDGE BRANCH, EDMONTON

FILE NO.	HWY. NO.	DWG. NO.
LOCATION	SCALE	5-752
STREAM	SHEET	OF

DESIGNED BY L. Kohlmann  
DATE 19 Dec 61  
CHECKED BY  
DATE 19 Dec 61

NO.	DATE	DESCRIPTION	BY	NO.	DATE	DESCRIPTION	BY
1	June 30/64	Anchor bolt dim. changed	B.St.	1	Dec. 4/63	Notes changed.	B.W.S.
2	June 26/64	8 Ga. added	B.St.	2	July 22/63	Fabrication notes added	D.H.P.
3	Feb 21/64	8 Ga. changed to 5/8	B.St.	3	July 12/63	Spacer bar alternate added	RE
				4	April 9/63	Top R. weld	B.H.S.

NO.	DATE	DESCRIPTION	BY
1	June 5/62	Base plate hole to 1 1/8"	B.W.S.
2	April 10/62	Post anchor bolts revised	L.K.
3	Feb. 6/62	Allowance made for graut pads	L.K.
4	Nov. 2/61	Redrawn	L.K.