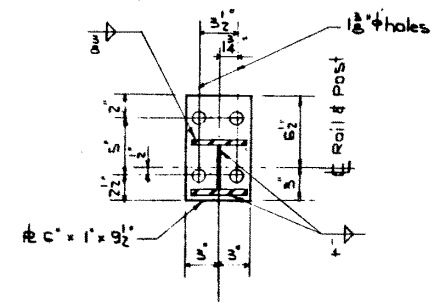
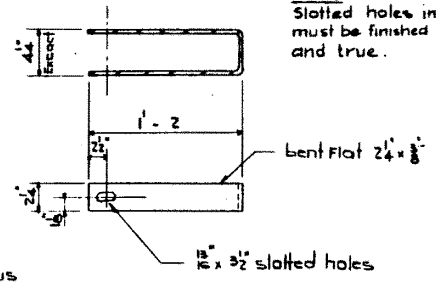


**PART ELEVATION**  
Scale 1" = 1'-0"

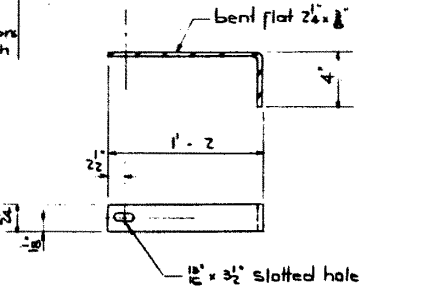


**BASE PLATE**  
Typical Scale 1 1/2" = 1'-0"

Note: Slotted holes in anchors must be finished smooth and true.

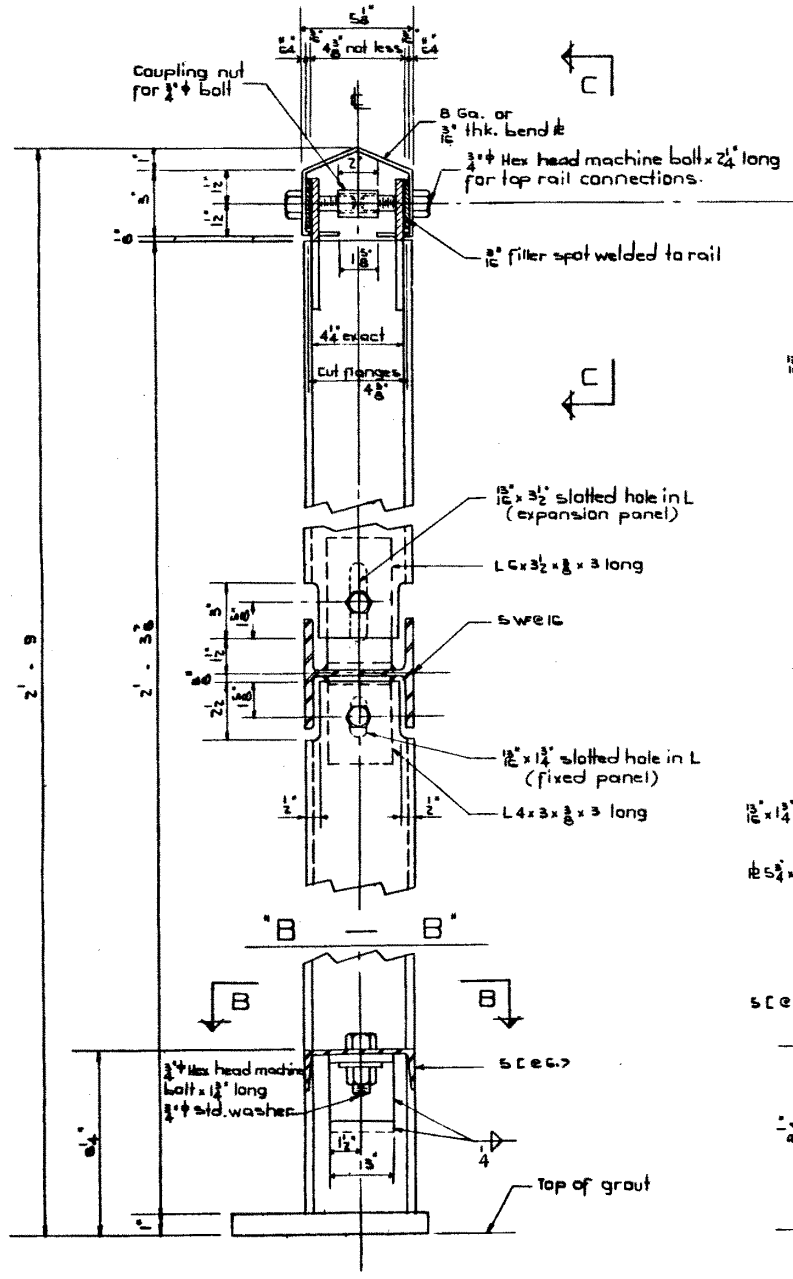


**ANCHOR TYPE S**  
Scale 1 1/2" = 1'-0"

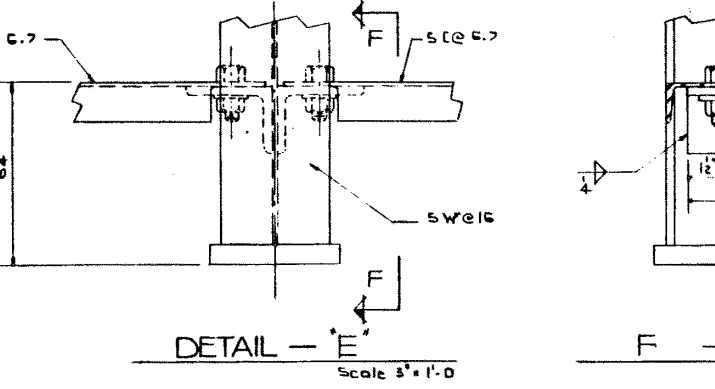
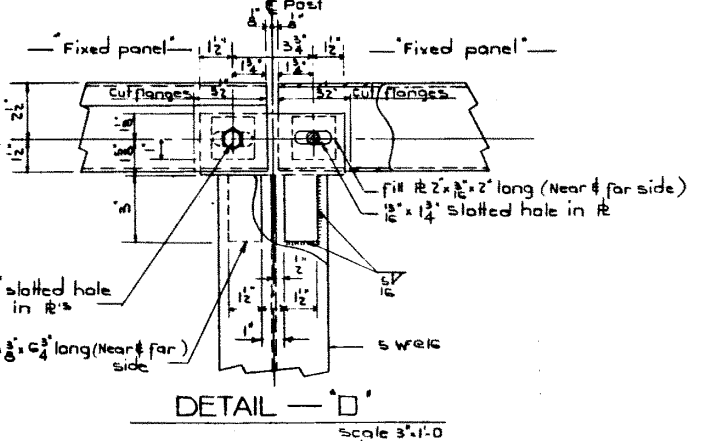
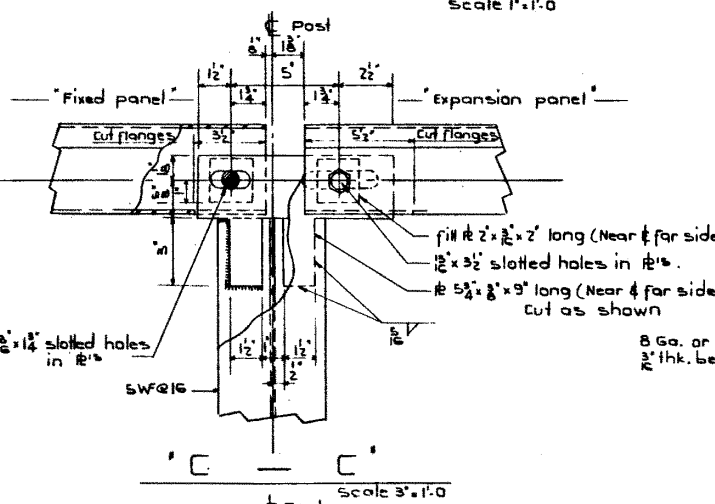


**ANCHOR TYPE T**  
Scale 1 1/2" = 1'-0"

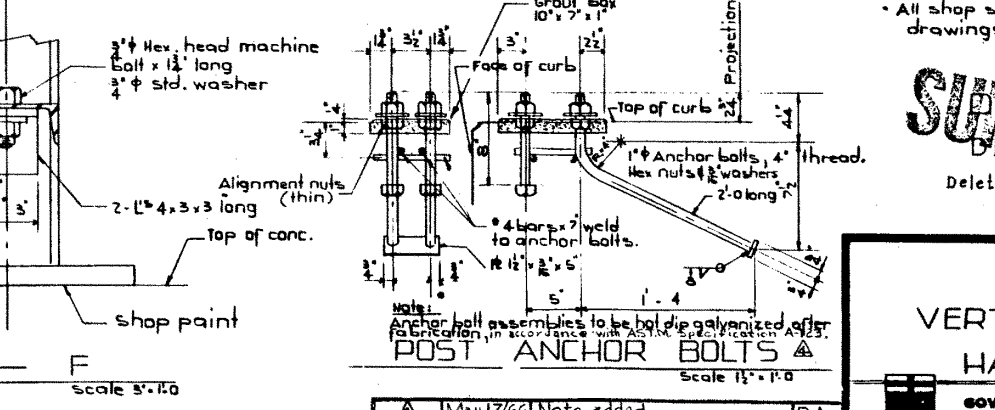
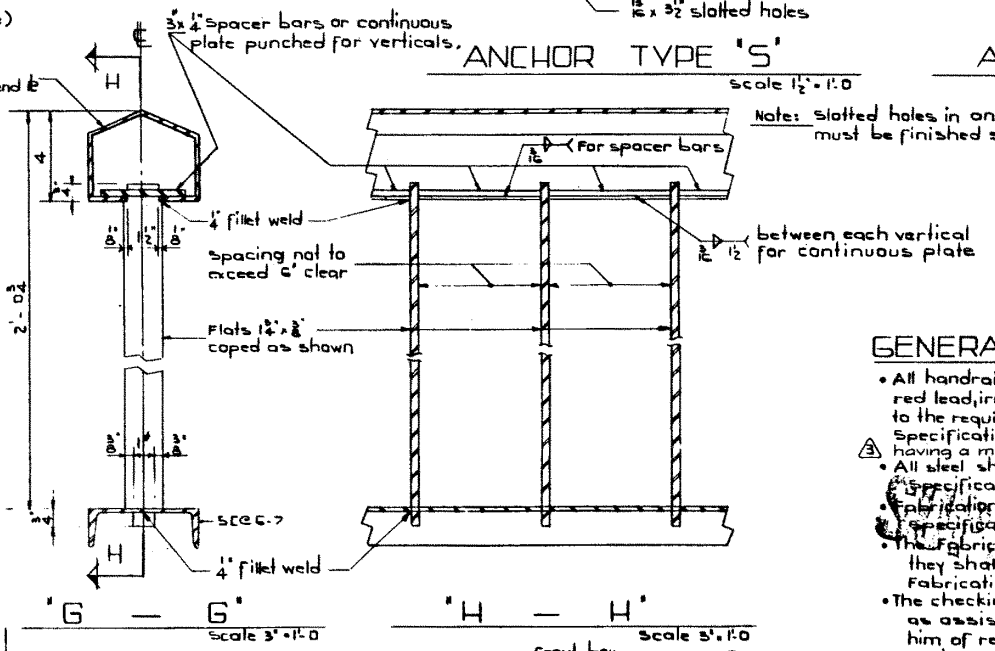
Note: Slotted holes in anchors must be finished smooth and true.



**A - A** as shown  
Scale 3" = 1'-0"  
**A' - A'** same as shown except base projects to the right.



**DETAIL D** Scale 3" = 1'-0"  
**DETAIL E** Scale 3" = 1'-0"  
**DETAIL F** Scale 3" = 1'-0"



**POST ANCHOR BOLTS**  
Scale 1 1/2" = 1'-0"

- GENERAL NOTES :**
- All handrail and posts to be given one shop coat red lead, iron oxide, oil alkyl type paint conforming to the requirements of the Canadian Government Specification Board; Specification 1-6P-140 A, having a min. dry thickness of 1.5 mils.
  - All steel shall conform to the current A.S.T.M. Specification A 36.
  - Specifications to be in accordance with A.A.S.H.O. Specifications for Highway Bridges, 1941 edition.
  - The Fabricator shall submit shop drawings and they shall be approved by the Department before fabrication is started.
  - The checking of shop drawings to be considered as assisting the Fabricator and shall not relieve him of responsibility for error or omission.
  - All shop splices are to be shown on the drawings.

**SUPERSEDED**  
Delete.

**2'-3" HIGHWAY VERTICAL BAR TYPE HANDRAIL DETAIL**

GOVERNMENT OF THE PROVINCE OF ALBERTA  
DEPARTMENT OF HIGHWAYS  
BRIDGE BRANCH, EDMONTON

NO.	DATE	DESCRIPTION	BY
1	May 17/66	Note added.	D.A.
2	Dec 7/65	Shop paint note added	VGB
3	June 8/65	Note added.	VGB
4	May 25/65	Redrawn	L.K.

FILE NO. \_\_\_\_\_ HWY. NO. \_\_\_\_\_  
LOCATION \_\_\_\_\_ SCALE \_\_\_\_\_  
STREAM \_\_\_\_\_ SHEET OF 5-752

DESIGNED BY L. Kahlmann  
DATE Feb. 24, 1966  
CHECKED BY \_\_\_\_\_  
DATE \_\_\_\_\_