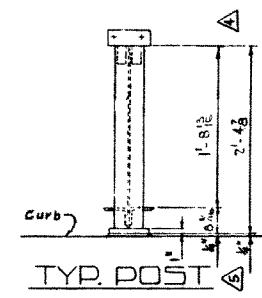
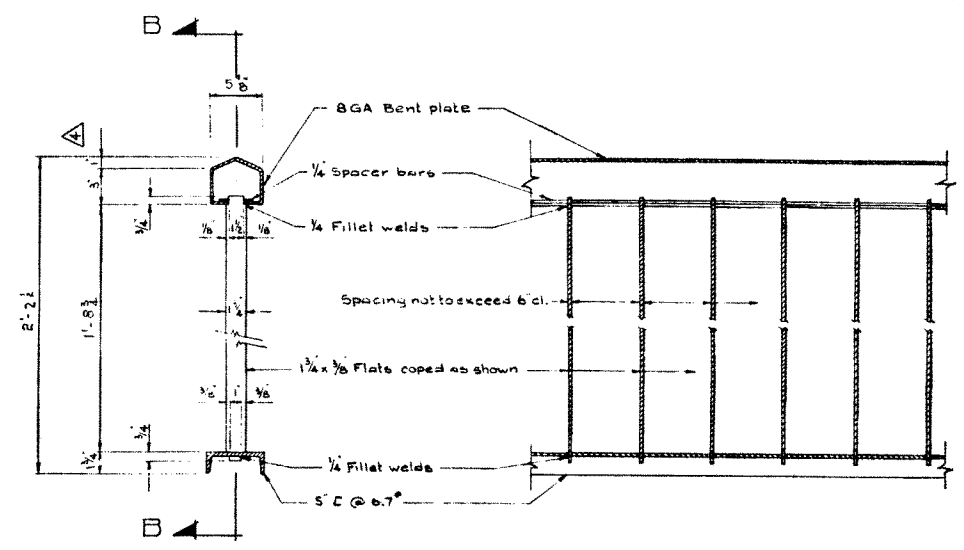


ELEVATION Scale: 1/4"=1'-0"

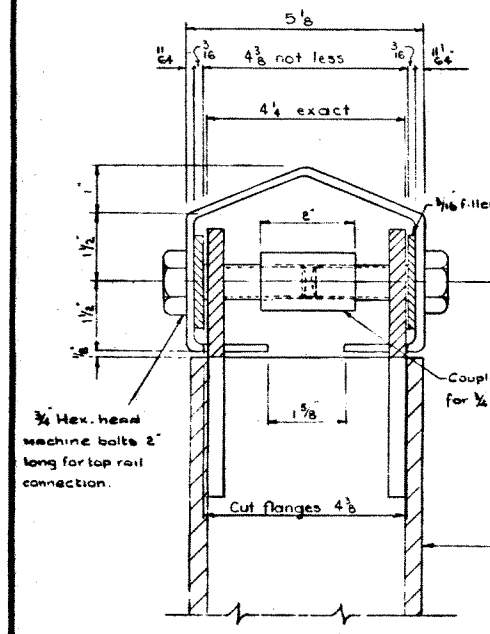


TYP. POST

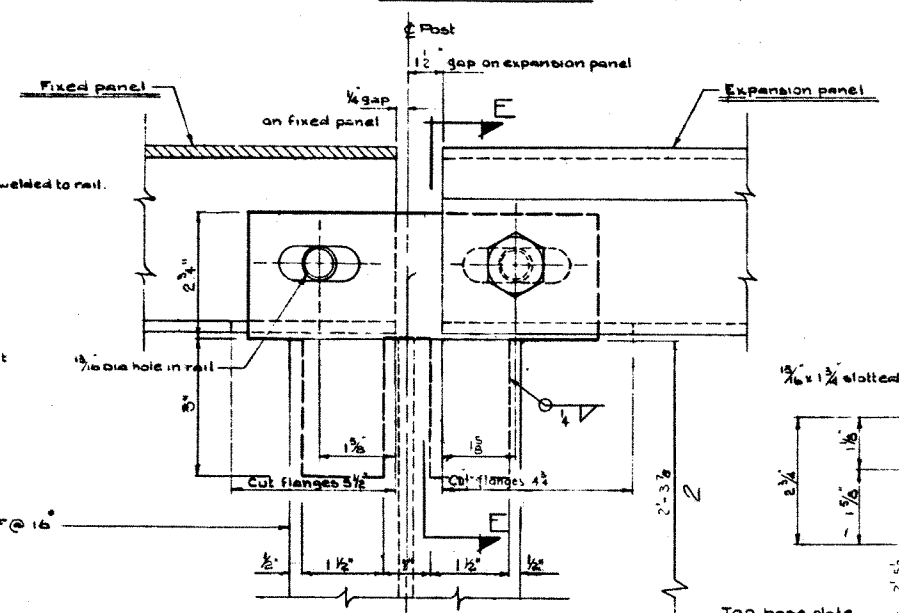


SECTION A-A Scale: 1/2"=1'-0"

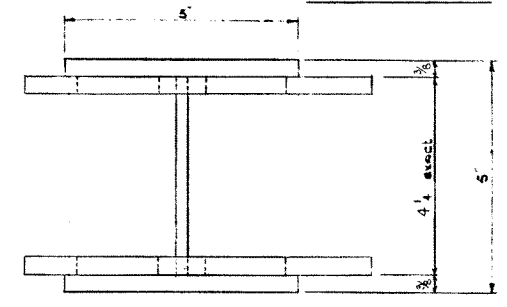
SECTION B-B Scale: 1/2"=1'-0"



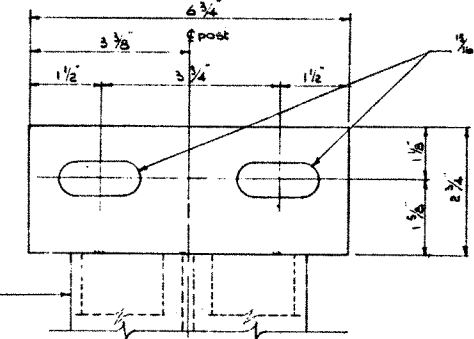
SECTION E-E Scale: Half size



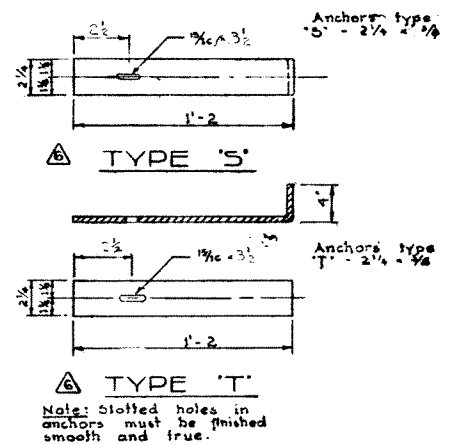
DETAIL C Scale: Half size



TYP. EXPANSION PANEL POST Scale: Half size



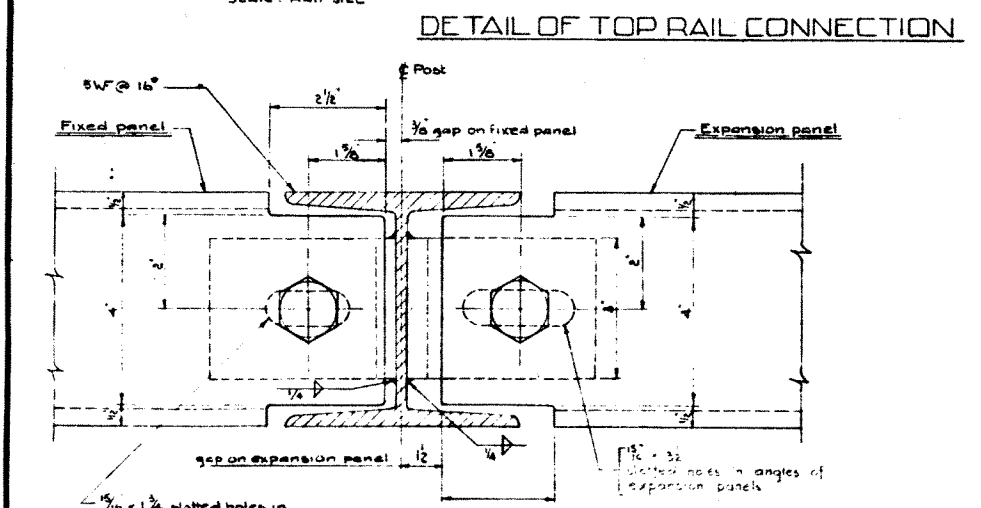
TYP. FIXED PANEL POST Scale: Half size



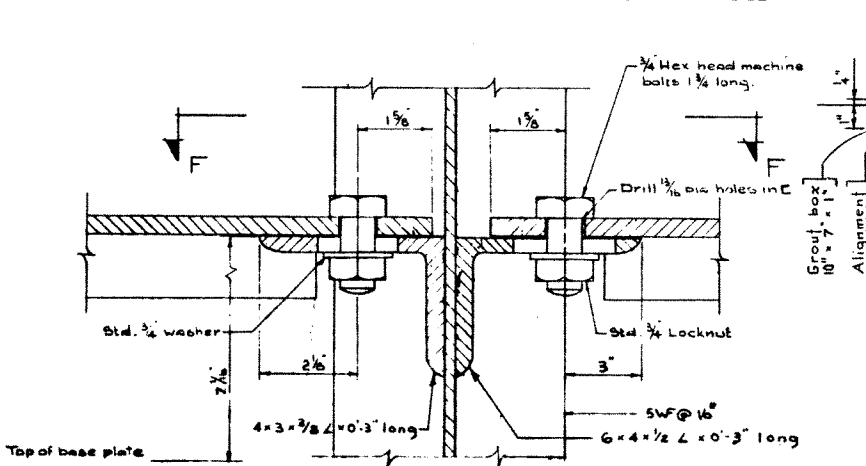
TYPE 'S'

TYPE 'T'

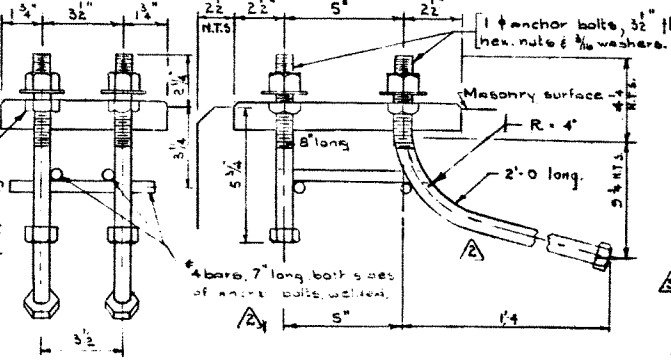
Note: Slotted holes in anchors must be finished smooth and true.



DETAIL OF TOP RAIL CONNECTION



DETAIL D Scale: Half size



POST ANCHOR BOLTS Scale: 3/4"=1'-0"

Note: Anchor bolt assemblies to be hot dip galvanized after fabrication.

**SUPERSEDED**

GENERAL NOTES

- All steel including bolt heads, nuts and anchors to be given one shop coat red lead, iron oxide, oil alkyl type paint conforming to the requirements of the Canadian Government Specification Board: Specification 1-6P-140A
- Steel shall conform to A.A.S.H.O. M165-371 (ASTM-A373-56T) except for bent plate which shall conform to A.A.S.H.O. M9-571 (ASTM-A1-56T)

2'-9" HIGHWAY VERTICAL BAR TYPE HANDRAIL DETAILS

GOVERNMENT OF THE PROVINCE OF ALBERTA  
DEPARTMENT OF HIGHWAYS  
BRIDGE BRANCH, EDMONTON

| NO. | DATE        | DESCRIPTION                  | BY     |
|-----|-------------|------------------------------|--------|
| 6   | July 24/61  | Note added                   | RE     |
| 7   | July 18/61  | Revised dimension.           | B.W.S. |
| 4   | May 18/61   | S & T Bars for Expy Exp Post | SGX    |
| 5   | May 3/61    | Added grout pockets          | BWS    |
| 4   | April 27/61 | Change to Highway Type       | HHH    |
| 3   | Dec 13/60   | Revision to General Notes    | SGX    |
| 2   | Dec 5/60    | Anchorage details            | H.H.H. |
| 1   | Nov 1/60    | This spec converted to Std.  | H.H.H. |

FILE NO. \_\_\_\_\_ REV. NO. \_\_\_\_\_ SHEET NO. 5-752  
LOCATION \_\_\_\_\_ SCALE Shown \_\_\_\_\_  
STREAM \_\_\_\_\_ SHEET OF \_\_\_\_\_

DESIGNED BY: Henry H. Hendrickson  
 DATE: September 18, 59  
 CHECKED BY: R. Elmhurst  
 DATE: Sep 11, 1959  
 DATE: Sep 22, 1959