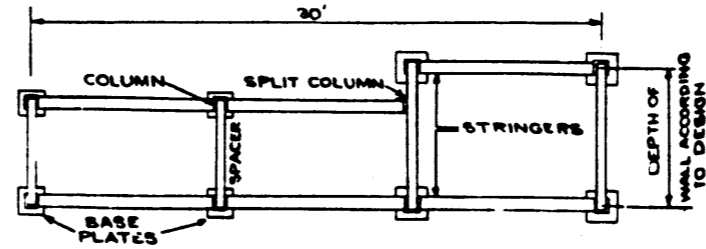
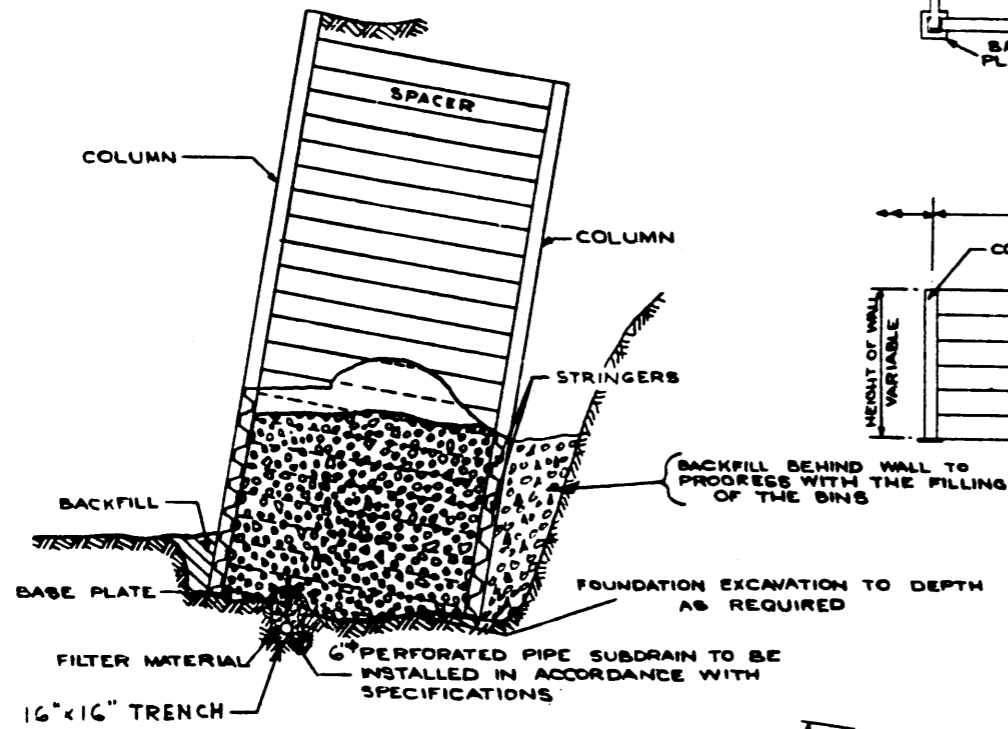
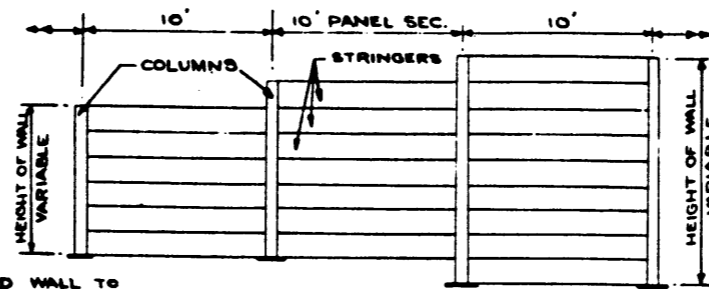


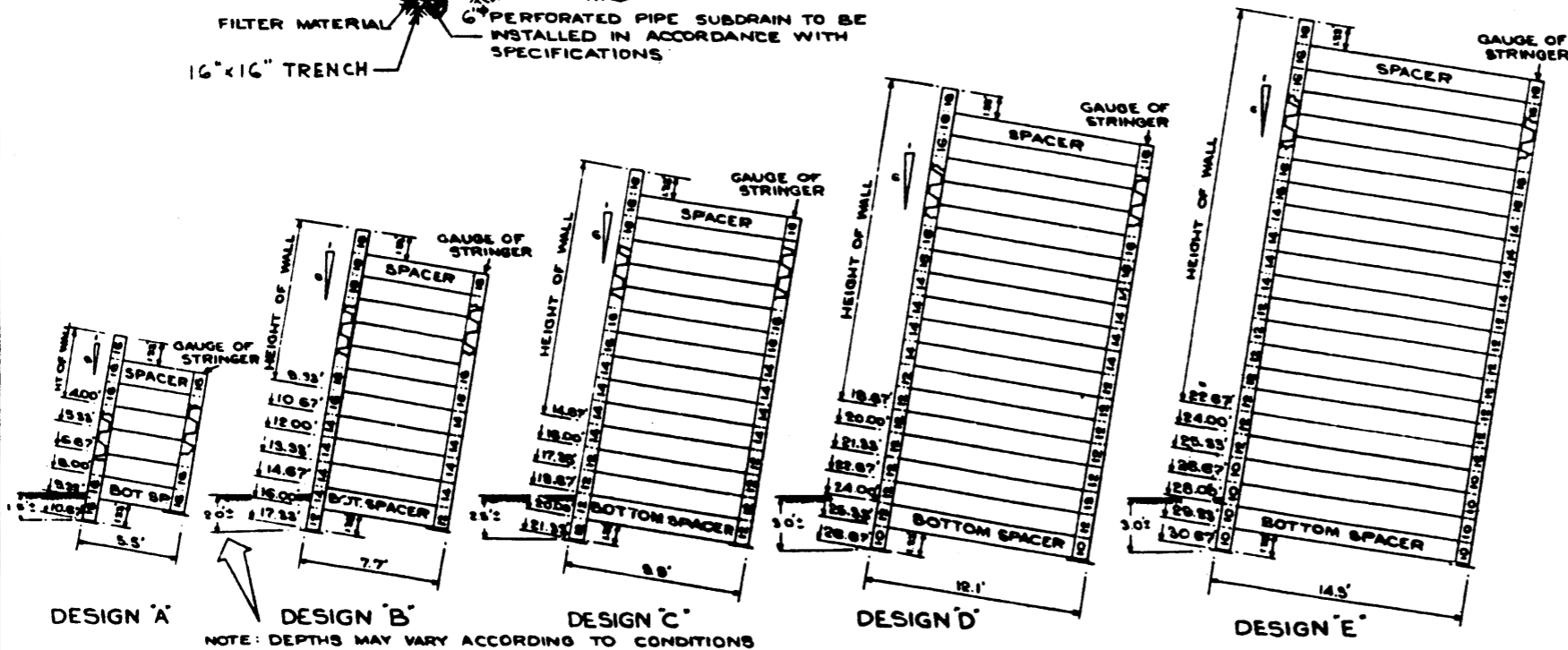
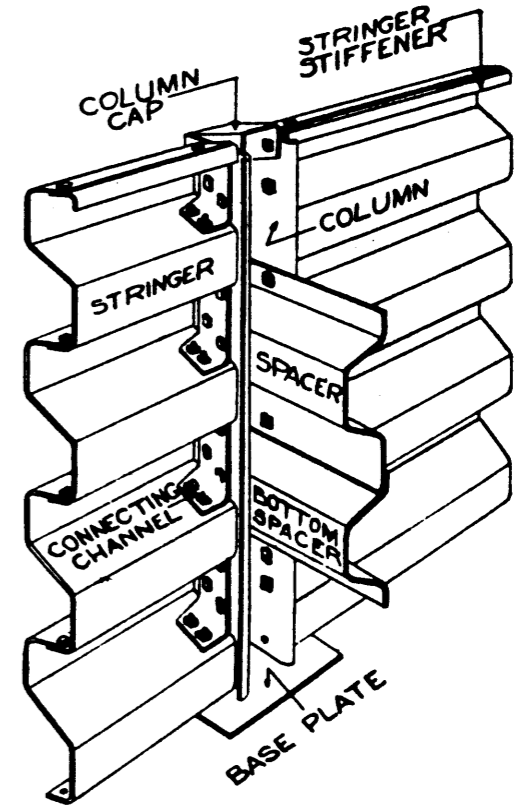
TYPICAL CROSS-SECTION OF BIN-TYPE WALL INSTALLATION



PLAN & ELEVATION OF TYPICAL WALL



SECTION SHOWING TYPICAL ASSEMBLY AT COLUMN



NOTE: DEPTHS MAY VARY ACCORDING TO CONDITIONS

PROVINCE OF ALBERTA - DEPARTMENT OF HIGHWAYS

METAL BIN TYPE RETAINING WALL

MAY 6, 1959

S-767