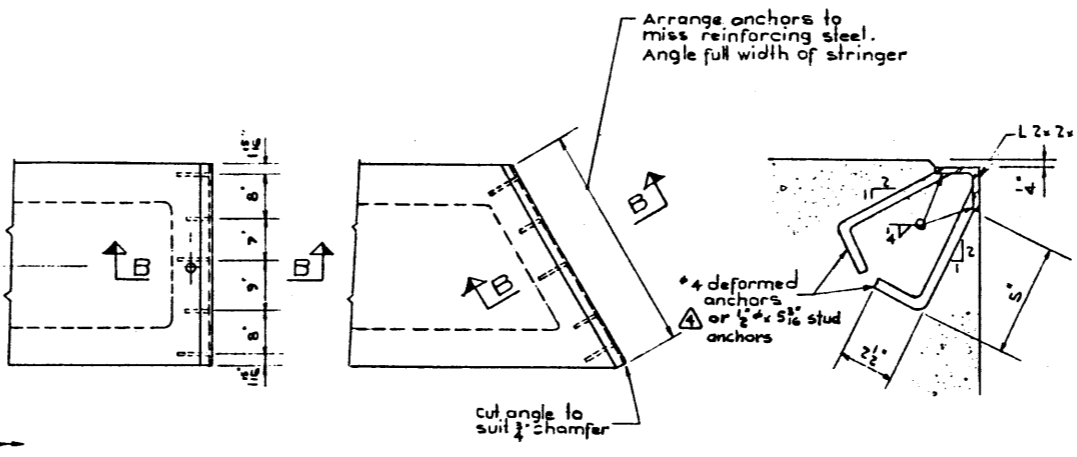
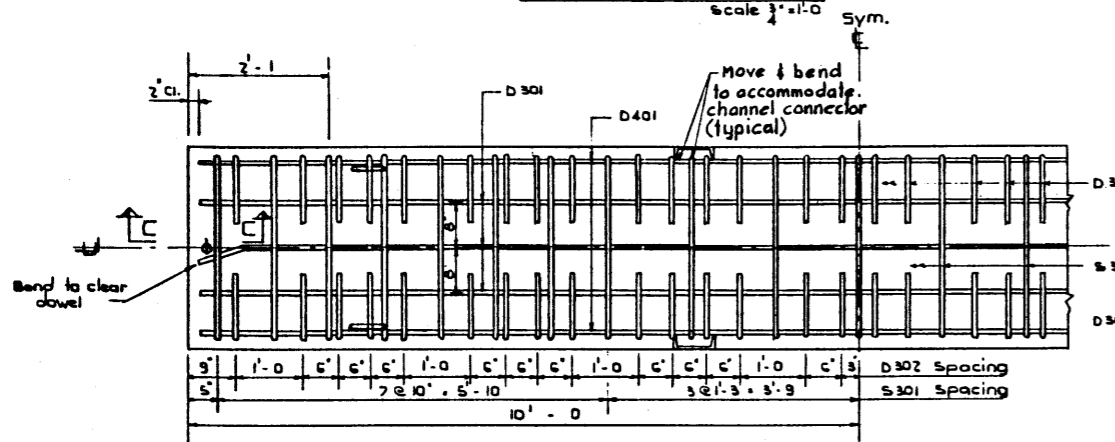


PLAN VIEW  
Scale 3/4" = 1'-0"

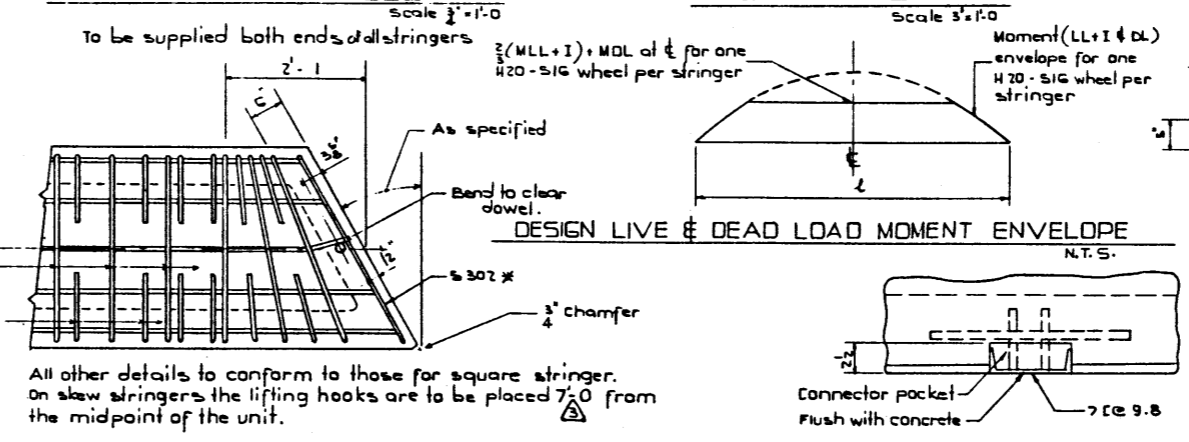


PROTECTION ANGLE  
Scale 3/4" = 1'-0"

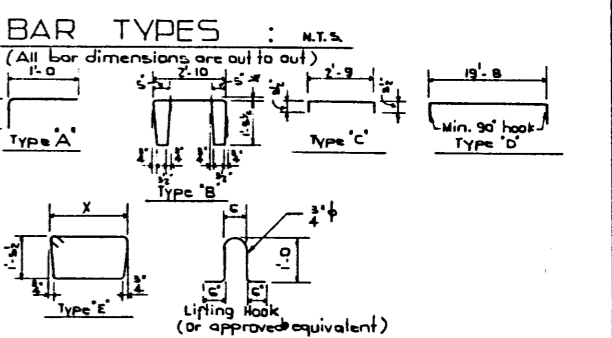
BAR LIST						
MARK	SIZE	NO	TYPE	X	LENGTH	WEIGHT
D 301	3	3	Str.		19' - 8"	22
D 302	3	60	A		1' - 6"	32
S 301	3	21	B		9' - 4"	74
D 401	4	2	Str.		19' - 8"	20
D 501	5	20	Str.		2' - 8"	50
G 601	6	2	Str.		10' - 0"	48
G 602	6	2	Str.		18' - 0"	66
G 801	8	2	D		20' - 9"	111
G 301	3	4	C		3' - 4"	5
S 302	3	2	E			
D 303	3	20	Str.		2' - 8"	20
* For skewed stringer only						Total weight: 450



REINFORCEMENT PLAN  
Scale 3/4" = 1'-0"

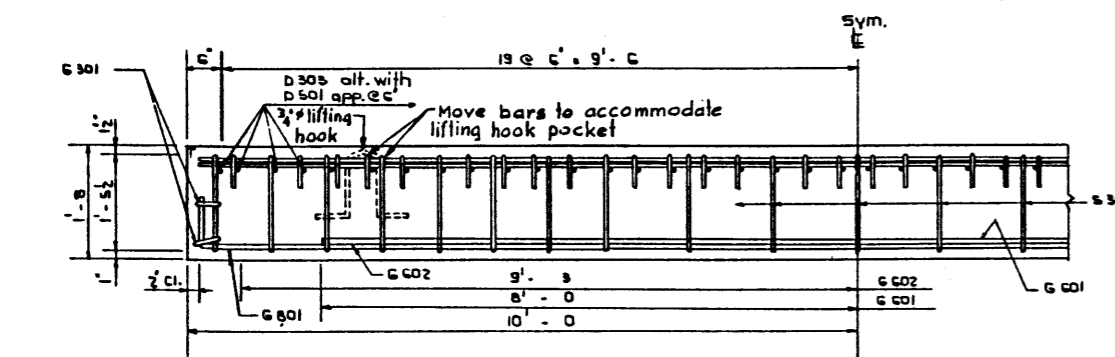


SKEW STRINGER  
Scale 3/4" = 1'-0"

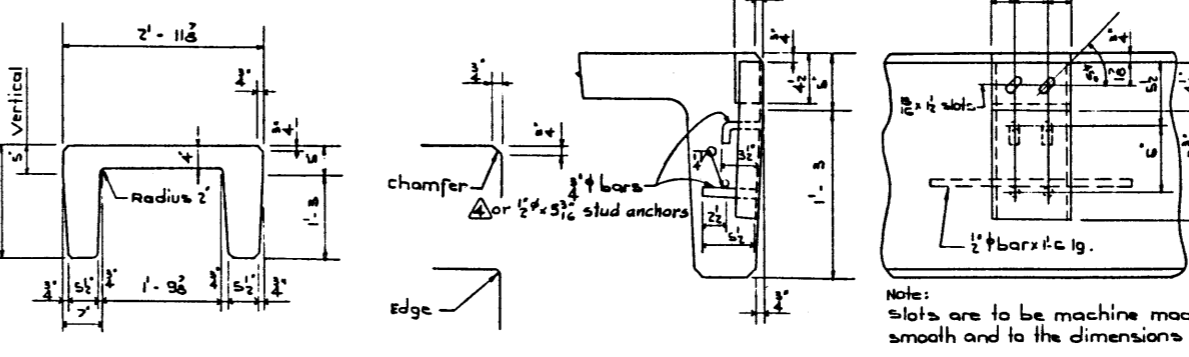


GENERAL NOTES:

- DESIGN**
- Live Load - A.A.S.H.O. HS-20-44 modified as shown.
  - Dead Load - includes allowance for 2" wearing surface.
  - Concrete - to be standard weight aggregates with maximum aggregate size of 3/4" inch. Minimum 28 day compressive strength to be 4000 p.s.i.



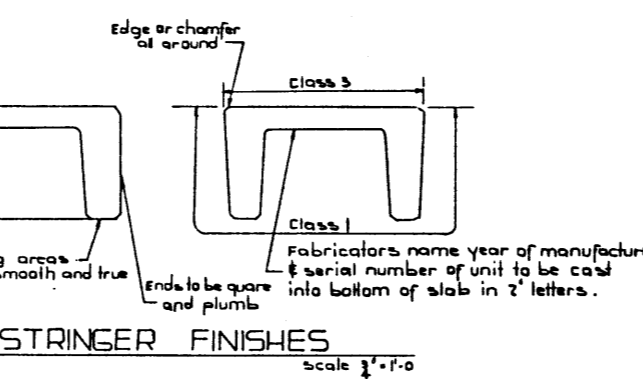
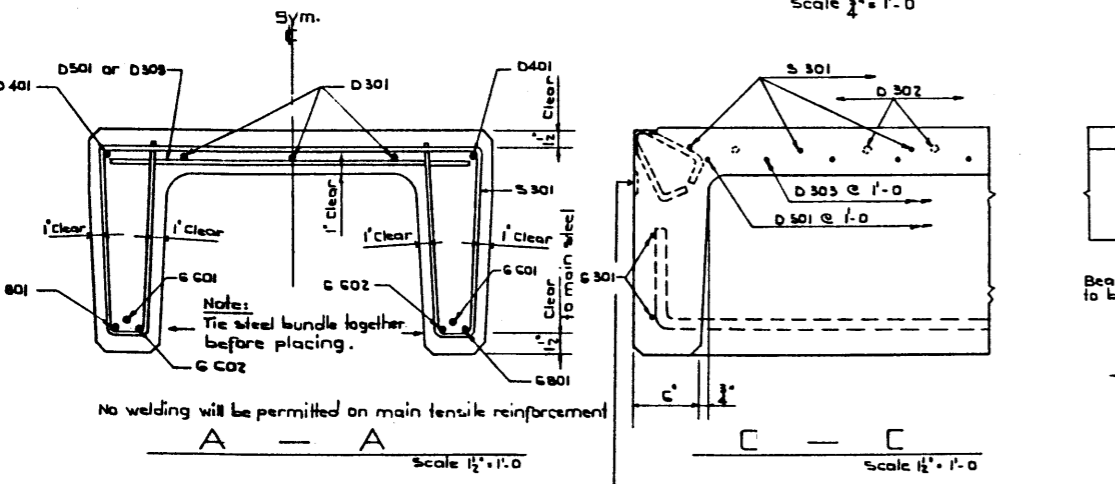
REINFORCEMENT ELEVATION  
Scale 3/4" = 1'-0"



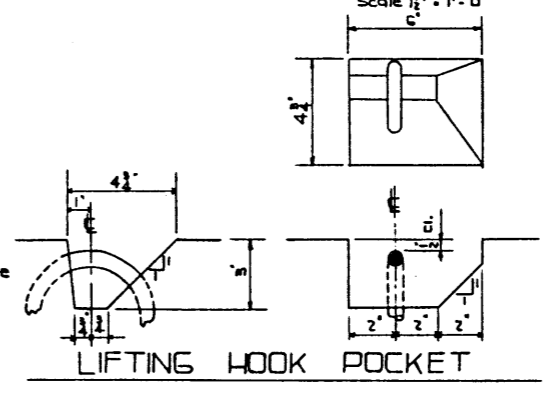
STRINGER CONNECTORS  
Scale 1/2" = 1'-0"

- CONSTRUCTION**
- Entrained air shall be not less than 6%.
  - Diameters of all bends shall conform to the recommended minimums and all hooks, unless otherwise noted shall conform to the recommended sizes detailed in the A.C.I. Manual of Standard Practice for Detailing Reinforced Concrete Structures.
  - Each stringer shall have a cast chamfer of 3/4" inch.
  - All acute angles on skewed stringers shall have 3/4" inch chamfer.
  - Concrete shall attain at least 30% of the specified 28 day compressive strength before the units are stripped from the forms or lifted.
  - Each connector is to be allowed one 3/4" x 2" H.T. bolt, one heavy hex semifinished nut and three hardened washers (supplied by Dept.)
  - Stringers shall conform to the requirements of the Alberta Government Specification for the Manufacture of Precast Concrete Bridge Units.

- ERECTION**
- Any free space between the connectors shall be filled with washers.



STRINGER FINISHES  
Scale 3/4" = 1'-0"



LIFTING HOOK POCKET  
Scale 1/2" = 1'-0"

DESIGNED BY: G.R.M. DATE: May 1962  
 DETAIL BY: L. Kohlmann DATE: May 1962  
 CHECKED BY: R.E.E. DATE: May 1962

3

**PRECAST CONCRETE**  
**20 FT. SPAN TYPE "HC"**  
**INTERIOR STRINGER**

GOVERNMENT OF THE PROVINCE OF ALBERTA  
 DEPARTMENT OF HIGHWAYS  
 BRIDGE BRANCH, EDMONTON

NO.	DATE	DESCRIPTION	BY
A	Jan. 21/71	Stud anchors - alternate added	R.W.K.
A	Apr. 16/70	Dimension changed	J.C.Y.
A	Apr. 16/70	Dimension changed from 2'-9"	J.C.Y.
A	Jan. 8/69	Redrawn	R.E.E.

FILE NO. \_\_\_\_\_ HWY. NO. \_\_\_\_\_ DWS. NO. \_\_\_\_\_  
 LOCATION \_\_\_\_\_ SCALE as shown S-780  
 STREAM \_\_\_\_\_ SHEET \_\_\_\_\_ OF \_\_\_\_\_