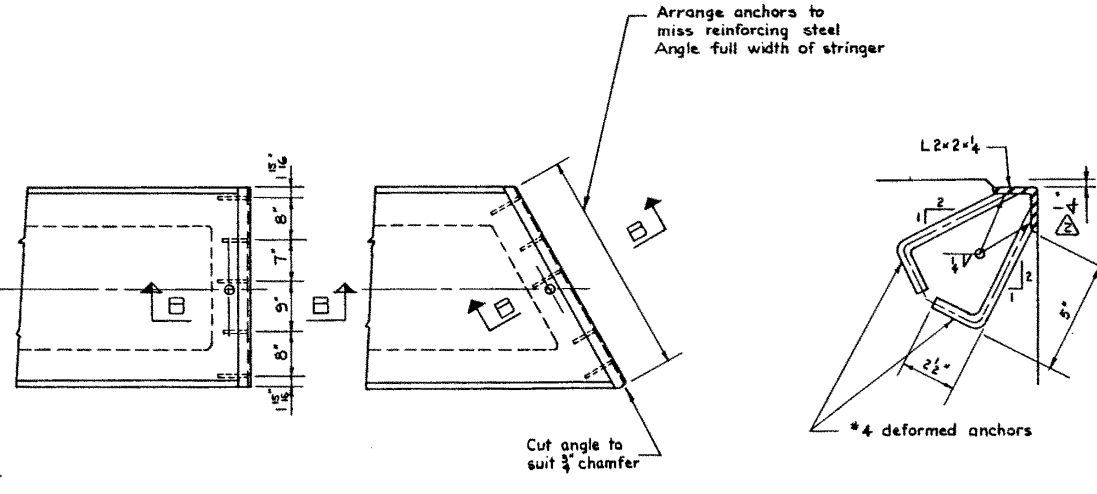


PLAN VIEW
Scale 3/4"=1'-0



PROTECTION ANGLES
Scale 3/4"=1'-0

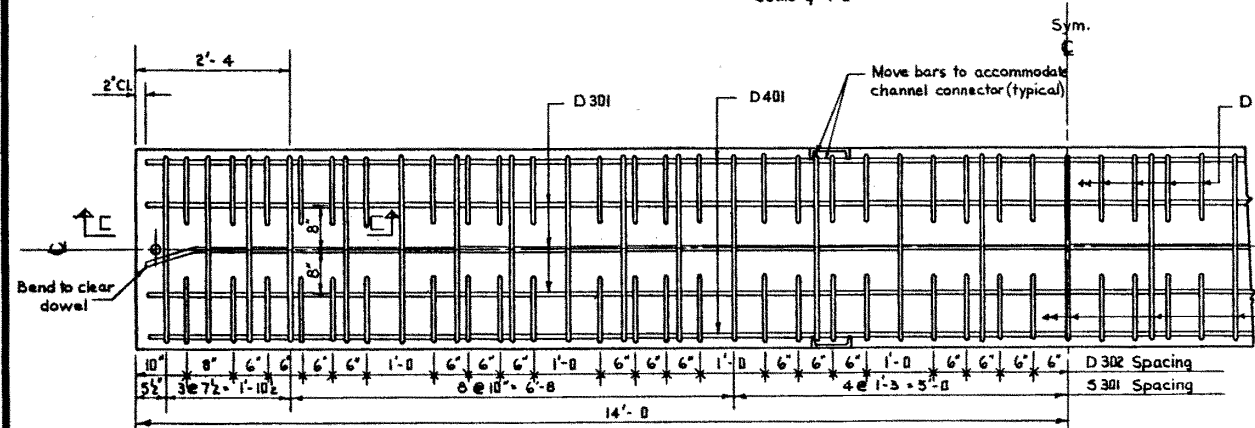
SECTION B-B
Scale 3/4"=1'-0

BAR LIST

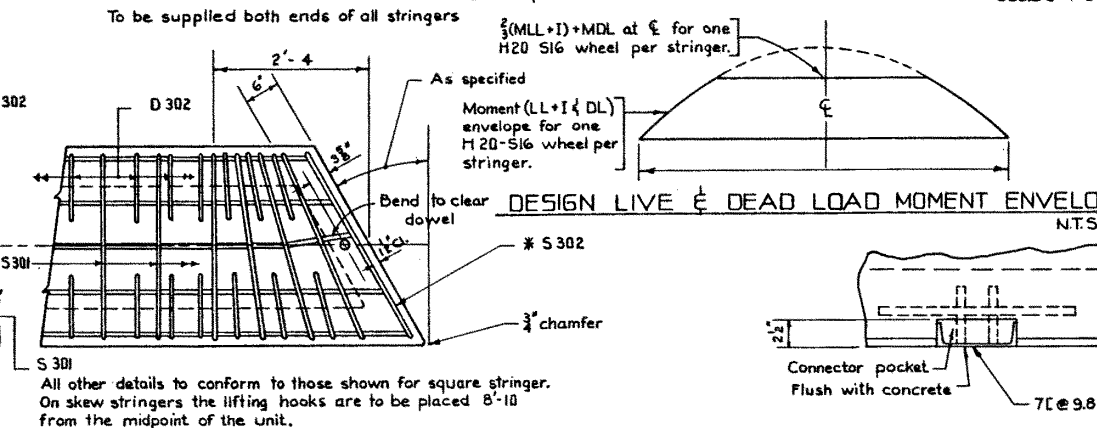
MARK	SIZE	NO.	TYPE	X	LENGTH	WEIGHT
D 301	3	3	Str.		27'- 8"	31#
D 302	3	88	A		1'- 5"	47#
S 301	3	31	B		9'- 4"	109#
D 401	4	2	Str.		27'- 8"	37#
D 501	5	28	Str.		2'- 8"	178#
G 801	8	2	Str.		24'- 0"	128#
G 901	9	2	Str.		27'- 6"	187#
G 902	9	2	D		28'- 11"	197#
S 302	3	2	E			
G 301	3	4	C		3'- 4"	5#
D 303	3	27	Str.		2'- 8"	27#
						Total weight: 846#

* For skewed stringer only.

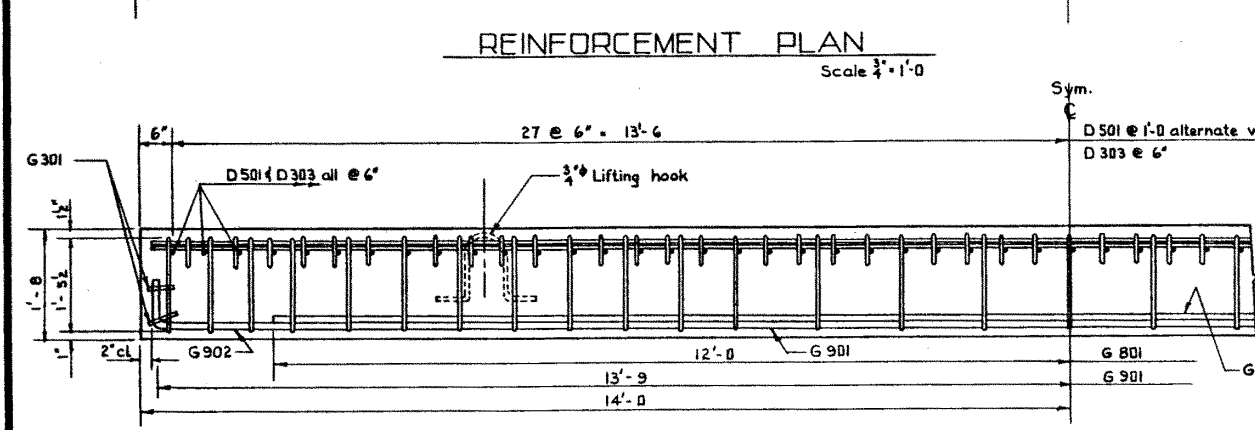
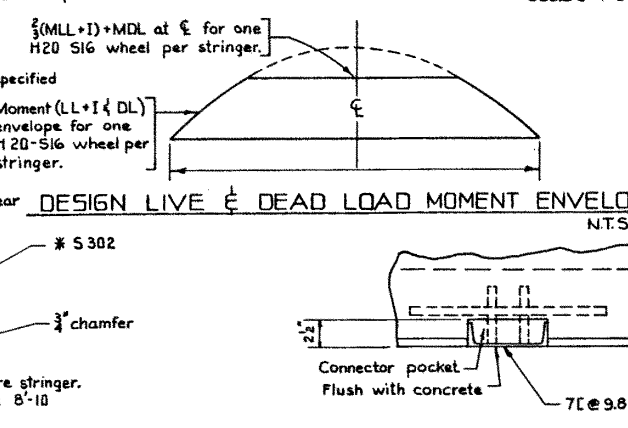
BAR TYPES:
(All bar dimensions are out to out)



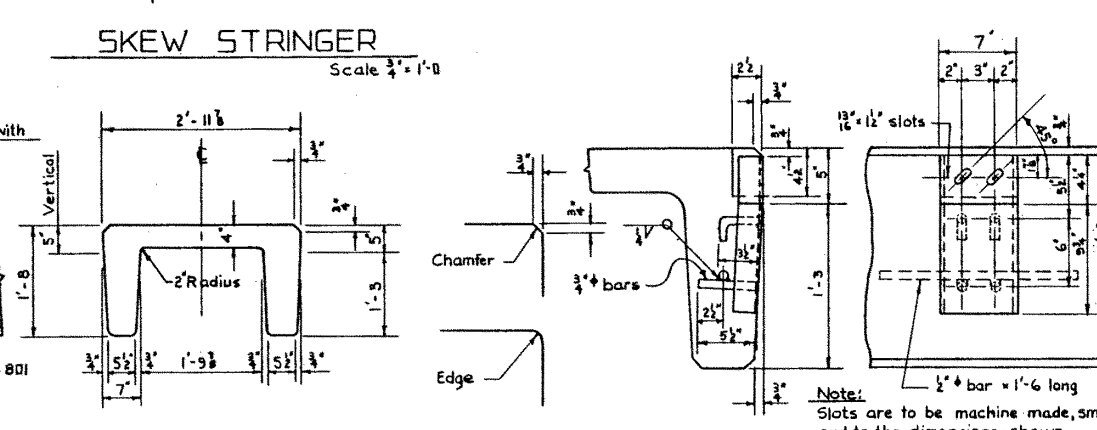
REINFORCEMENT PLAN
Scale 3/4"=1'-0



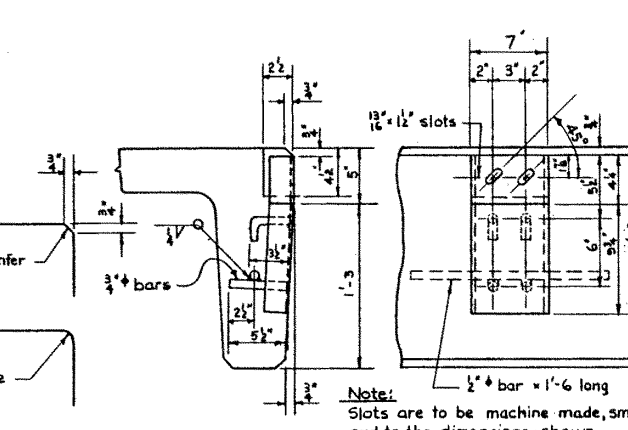
SKEW STRINGER
Scale 3/4"=1'-0



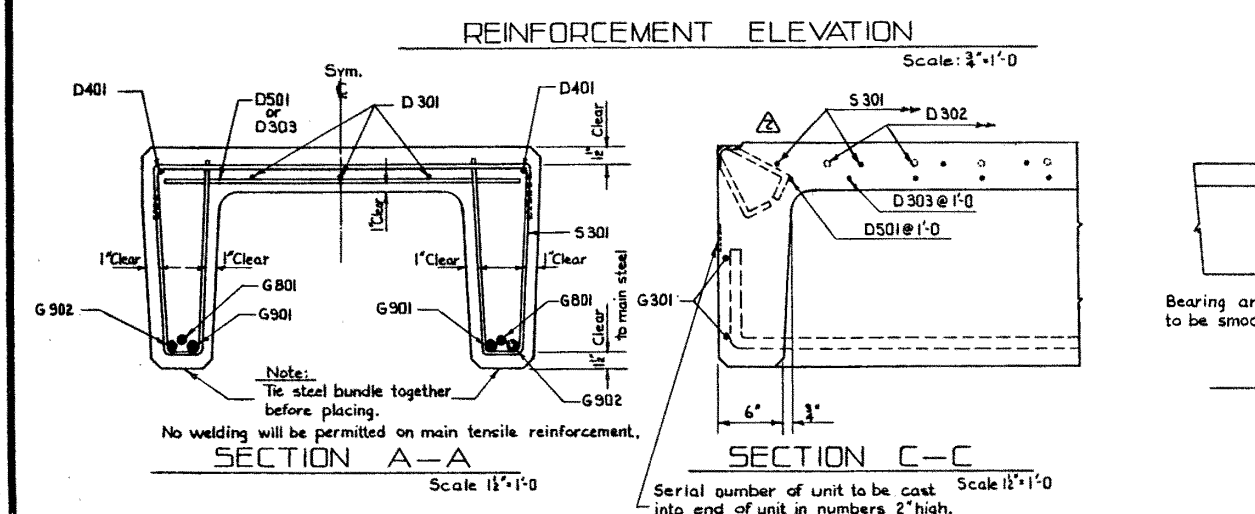
REINFORCEMENT ELEVATION
Scale 3/4"=1'-0



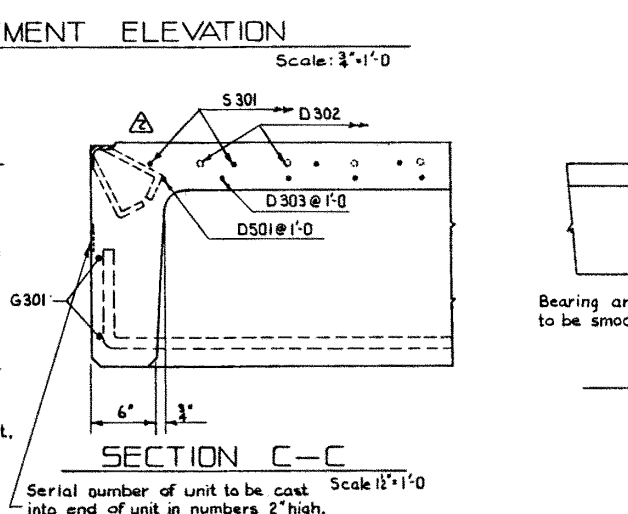
SECTION A-A
Scale 3/4"=1'-0



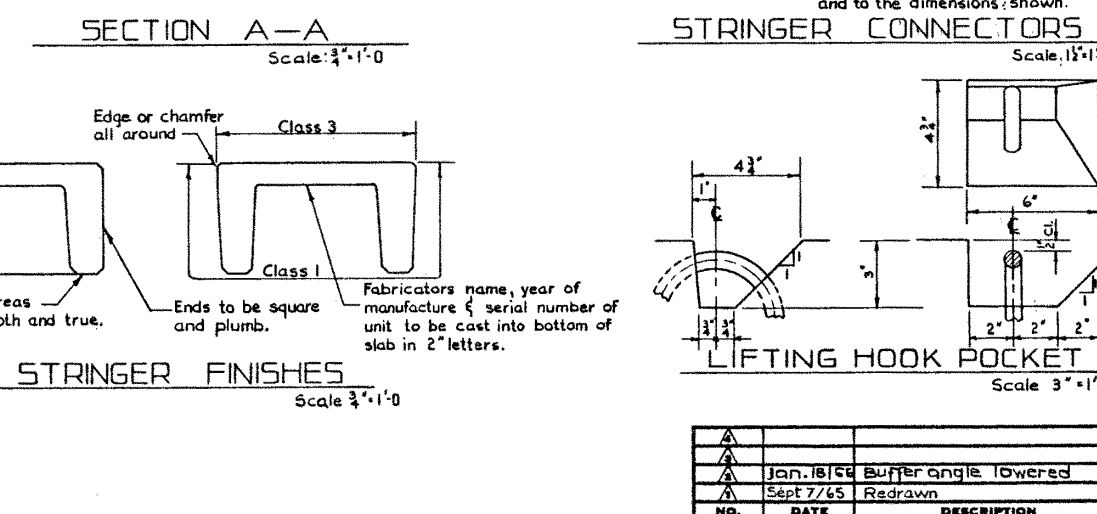
STRINGER CONNECTORS
Scale 1/2"=1'-0



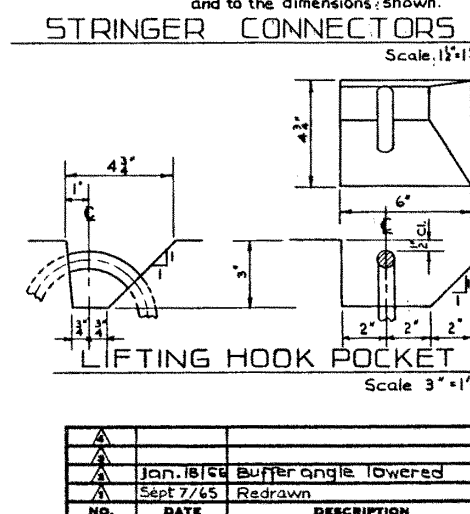
SECTION A-A
Scale 1/2"=1'-0



SECTION C-C
Scale 1/2"=1'-0



STRINGER FINISHES
Scale 3/4"=1'-0



LIFTING HOOK POCKET
Scale 3/4"=1'-0

GENERAL NOTES:

DESIGN:
Live Load—A.A.S.H.O. HS20-44 modified as shown.
Dead Load—includes allowance for 2" wearing surface.
Concrete—to be light weight aggregates with maximum aggregate size of 3/4 inch. Minimum 28 day compressive strength to be 4000 p.s.i. The unit weight of the concrete shall be 105 pounds per cubic foot plus or minus 5% when unit weight is determined in conformity with the requirements of the specification A.S.T.M. C 330.

CONSTRUCTION:
Entrained Air shall be between 5% & 8%.
Diameters of all bends shall conform to the recommended minimums and all hooks, unless otherwise noted shall conform to the recommended sizes detailed in the A.C.I. Manual of Standard Practice for Detailing Reinforced Concrete Structures.
Each stringer shall have a cast camber of 3/4 inch.
All acute angles on skewed stringers shall have 3/4 inch chamfer.
Concrete shall attain at least 30% of the specified 28 day compressive strength before the units are stripped from the forms or lifted.
Each connector is to be allowed one 3/4" x 2" H.T. bolt, one heavy hex semi finished nut and three hardened washers. (Supplied by Dept.)

ERECTION:
Any free space between the connectors shall be filled with washers.

SUPERSEDED

PRECAST CONCRETE
28 FT. SPAN TYPE "HC"
INTERIOR STRINGER

GOVERNMENT OF THE PROVINCE OF ALBERTA
DEPARTMENT OF HIGHWAYS
BRIDGE BRANCH, EDMONTON

FILE NO. _____ HWY. NO. _____ DWG. NO. _____
LOCATION _____ SCALE as shown _____
STREAM _____ SHEET OF 5-781

NO.	DATE	DESCRIPTION	BY
1	Jan. 18/64	Buffer angle lowered	L. K.
2	Sept 7/65	Redrawn	V.G.B.

DESIGNED BY: G.R.M. DATE: May 1962
 CHECKED BY: L. Kohlman DATE: May 1962
 CHECKED BY: R.E.B. DATE: May 1962

1:10 REVISIONS

102116