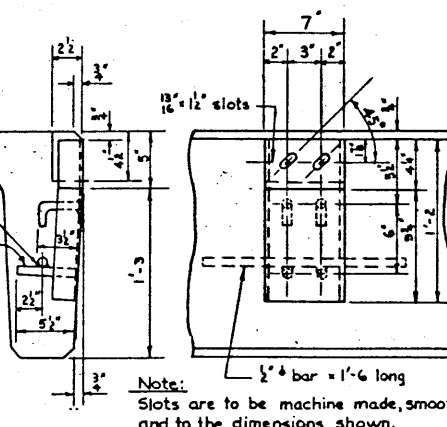
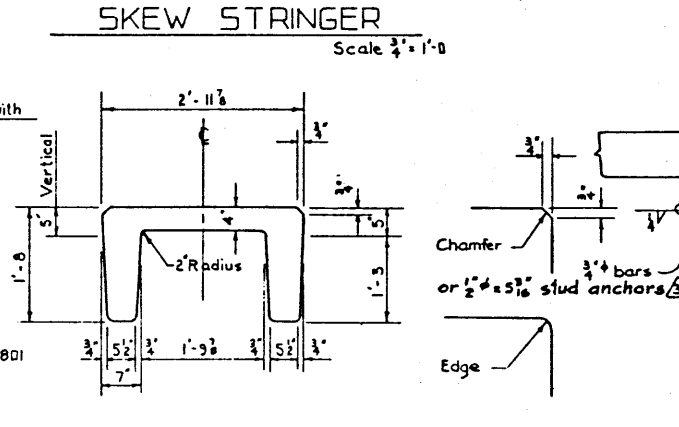
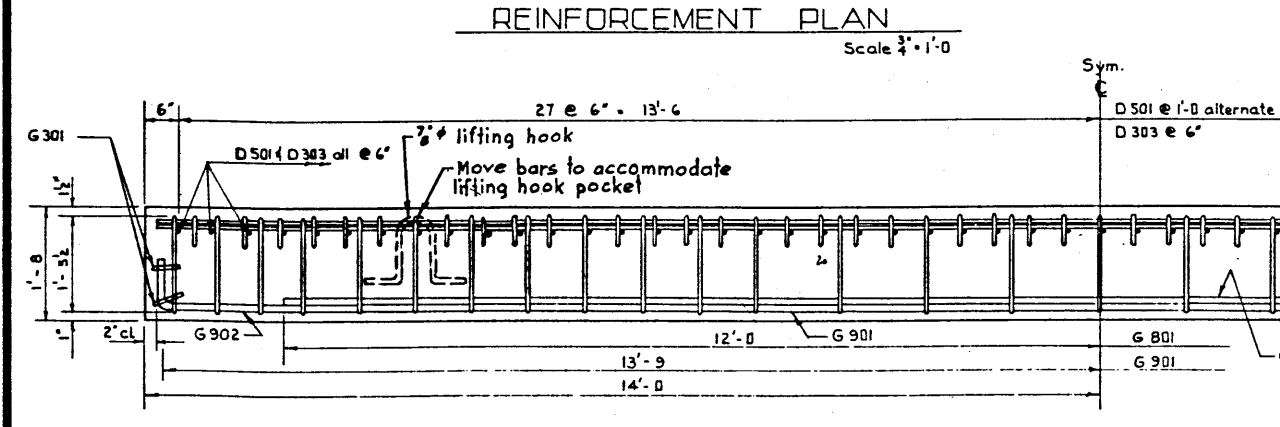
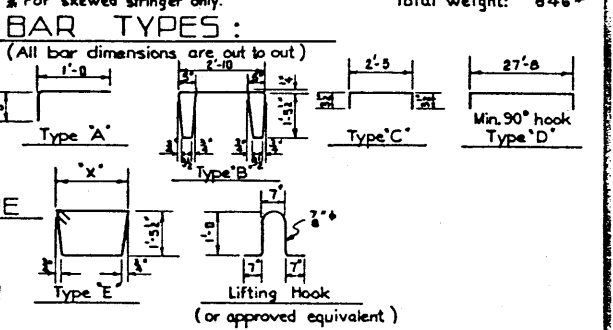
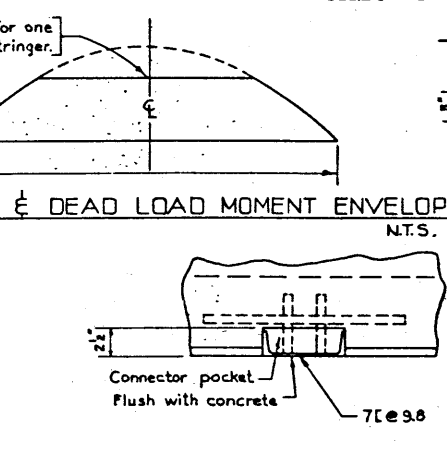
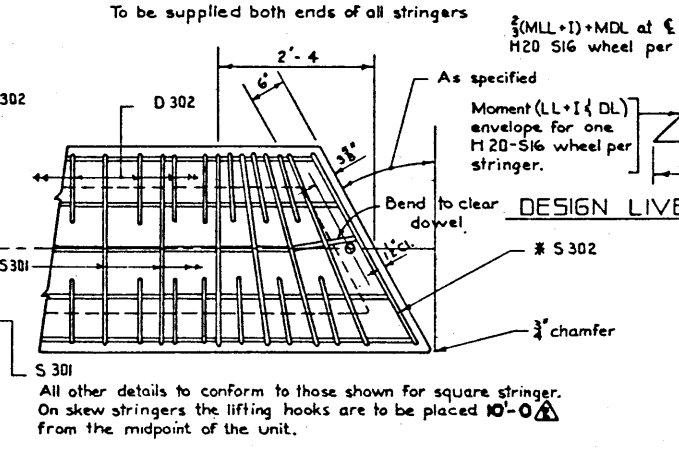
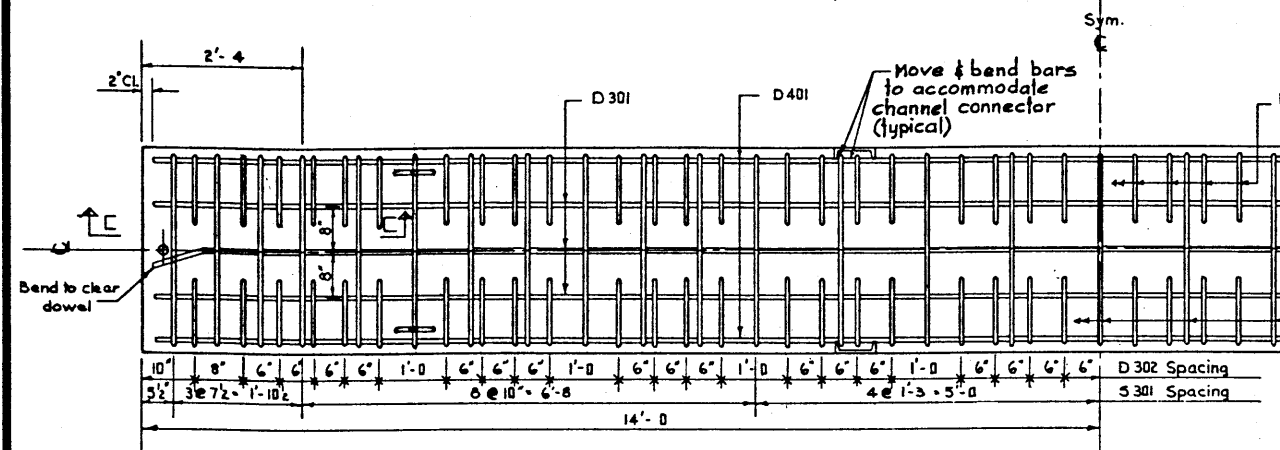


**BAR LIST**

MARK	SIZE	NO.	TYPE	X	LENGTH	WEIGHT
D 301	3	3	Str.		27'-8"	31#
D 302	3	88	A		1'-5"	47#
S 301	3	31	B		5'-4"	109#
D 401	4	2	Str.		27'-8"	37#
D 501	5	28	Str.		2'-8"	78#
G 801	8	2	Str.		24'-0"	128#
G 901	9	2	Str.		27'-6"	187#
G 902	9	2	D		28'-11"	197#
S 302	3	2	E			
G 301	3	4	C		3'-4"	5#
D 303	3	27	Str.		2'-8"	27#
Total weight:						846#

\* For skewed stringer only.



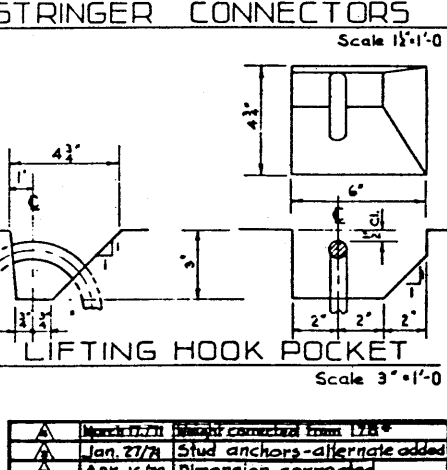
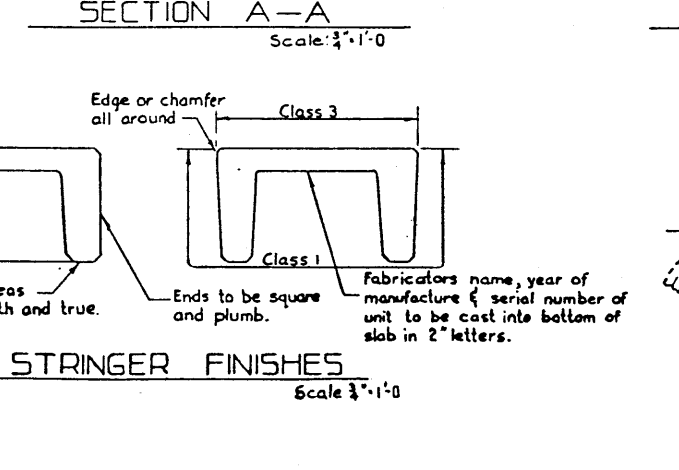
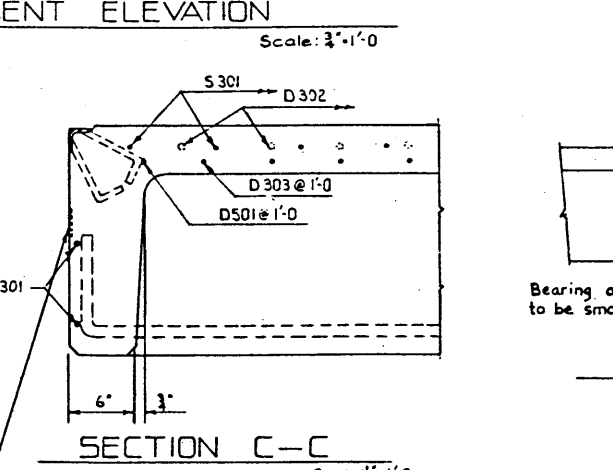
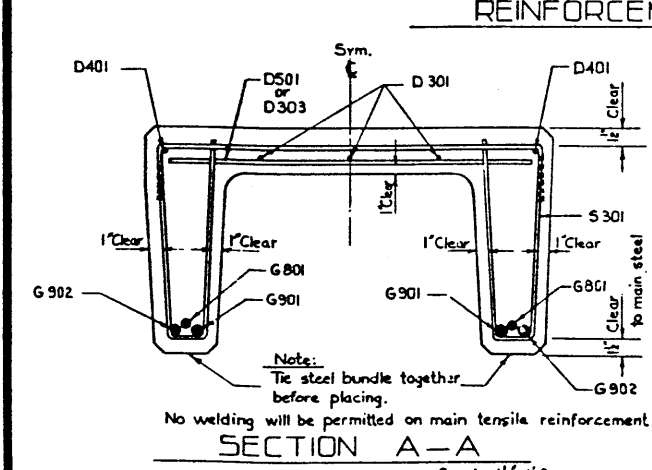
**GENERAL NOTES:**

**DESIGN:**

- Live Load - A.A.S.H.O. HS20-44 modified as shown.
- Dead Load - includes allowance for 2" wearing surface.
- Concrete - to be light weight aggregates with maximum aggregate size of 3/4" inch. Minimum 28 day compressive strength to be 4000 p.s.i. The unit weight of the concrete shall be 105 pounds per cubic foot plus or minus 5% when unit weight is determined in conformity with the requirements of the specification A.S.T.M. C 330.

**CONSTRUCTION:**

- Entrained Air shall be not less than 5%.
- Diameters of all bends shall conform to the recommended minimums and all hooks, unless otherwise noted shall conform to the recommended sizes detailed in the A.C.I. Manual of Standard Practice for Detailing Reinforced Concrete Structures.
- Each stringer shall have a cast camber of 3/8 inch.
- All acute angles on skewed stringers shall have 3/8 inch chamfer.
- Concrete shall attain at least 30% of the specified 28 day compressive strength before the units are stripped from the forms or lifted.
- Each connector is to be allowed one 3/4" x 2" H.T. bolt, one heavy hex semi finished nut and three hardened washers. (Supplied by Dept.)
- Stringers shall conform to the requirements of the Alberta Government Specifications for the Manufacture of Precast Bridge Units.



**ERECTION**

- Any free space between the connectors shall be filled with washers.

**PRECAST CONCRETE**  
28 FT. SPAN TYPE "HC"  
INTERIOR STRINGER

GOVERNMENT OF THE PROVINCE OF ALBERTA  
DEPARTMENT OF HIGHWAYS  
BRIDGE BRANCH, EDMONTON

FILE NO. \_\_\_\_\_ HWY. NO. \_\_\_\_\_ DWG. NO. 5-781  
LOCATION \_\_\_\_\_ SCALE as shown  
STREAM \_\_\_\_\_ SHEET \_\_\_\_\_ OF \_\_\_\_\_

**REVISIONS**

NO.	DATE	DESCRIPTION	BY
1	March 17/71	Weight corrected from 178#	C.W.H.
2	Jan. 27/72	Stud anchors - alternate added	M.K.
3	Apr. 16/70	Dimension corrected	J.C.Y.
4	Dec. 27/69	Redrawn	M.B.C.

CHECKED BY