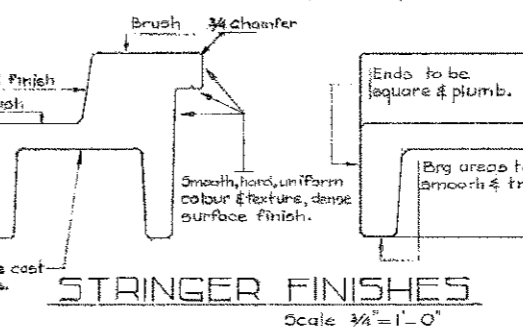
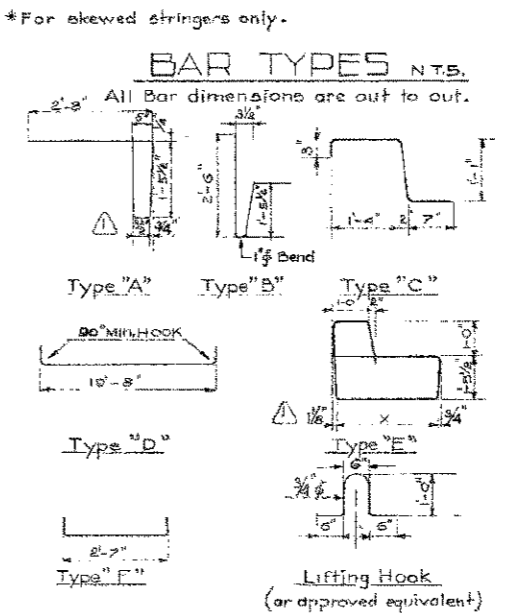


BAR LIST

MARK	SIZE	NUMBER	TYPE	X	LENGTH	WEIGHT
B 301	3	21	A		6'-0"	47 lbs
B 302	3	21	B		4'-1"	32 "
B 303	3	4	F		9'-6"	5 "
C 301	3	13	Str		2'-8"	13 "
D 301	3	6	Str		3'-3"	26 "
D 401	4	1	Str		10'-8"	44 "
E 301	3	1	Str		13'-6"	36 "
E 302	3	1	Str		18'-6"	49 "
E 303	3	2	D		20'-9"	111 "
* B 501	5	2	E			
Total						376 lbs



SUPERSEDED
See Dwg # 5791

NOTE: Tie steel bundle together before placing.

NO.	DATE	DESCRIPTION	BY
1	Dec. 15-61	The was back welded.	R. E.
2	Mar. 29 '61	Void & chamfer dimensions, Drain	Chis
3	March 13-61	Dimensions Stringer below Bar A/F	Chis

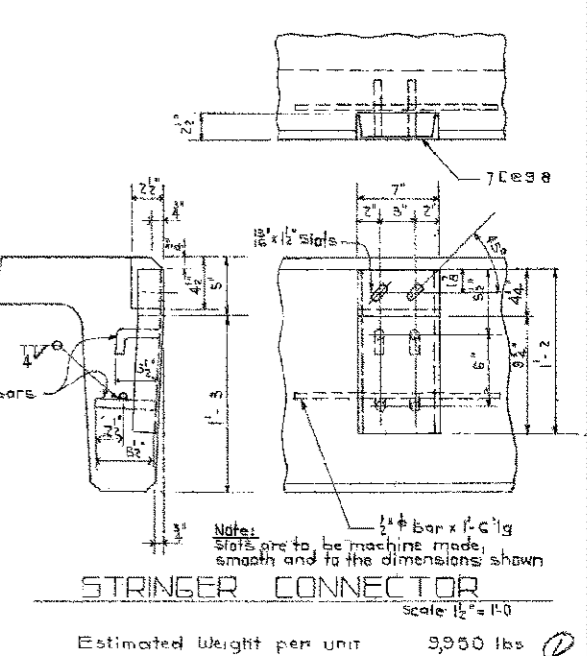
REVISIONS

GENERAL NOTES:

DESIGN:
*AASHD, 1957 where applicable.
*Loading H20-S16-44 + full dead load.

MATERIALS:
*All concrete materials shall conform to ASTM specifications.
*Concrete shall be of standard weight aggregate with max. size 3/4". Min. compressive strength shall be 4000 p.s.i. at 28 days. Entrained air shall fall between the limits of 5.5 ± 1%.
*Reinforcing steel shall be of intermediate grade conforming to the C.S.A. specification G 30.1-1954 or G 30.2-1954 and deformed steel to conform to G 30.3-1954.

FABRICATION:
*Concrete must reach 30% of the required 28 day compressive strength before stripping and lifting.
*Concrete must reach 65% of the required 28 day compressive strength before shipping.
*Each girder shall have no poured camber.
*All acute corners on skewed girders to have 3/4" chamfer.
*Diameters of all bends shall conform to the recommended minimums, and all hooks, unless otherwise noted shall conform to the recommended sizes detailed in the A.C.I. Manual of Standard Practice for Detailing Reinforced Concrete Structures.
*Concrete test cylinders shall be tested by an independent testing laboratory, copies of all test results shall be forwarded to the Bridge Branch.
*Tests shall be taken at the rate of one cylinder for each two stringers with not less than two cylinders for each days pouring.
*Connectors and bolts are to be provided by the stringer fabricator.
*Bolts are to be placed with one washer under the head and one washer under the nut.
*Fill any free space between the connectors with washers.
*Each connector to have 1-2" x 3" HT. bolt with a nut and 3 washers, conforming to the requirements of the Specification ASTM--A 325.



PRECAST CONCRETE
20 FT. SPAN TYPE "HC"
CURB STRINGER

GOVERNMENT OF THE PROVINCE OF ALBERTA
DEPARTMENT OF HIGHWAYS
BRIDGE BRANCH, EDMONTON

FILE NO. HWY. NO. DWG. NO.
LOCATION SCALE AS SHOWN SHEET OF
STREAM SHEET OF 5-782

DESIGNED BY: R.E.B. DATE: Jan. 1951
 DETAILED BY: P.B.B. DATE: Jan. 1951
 CHECKED BY: P.B.B. DATE: Feb. 1951